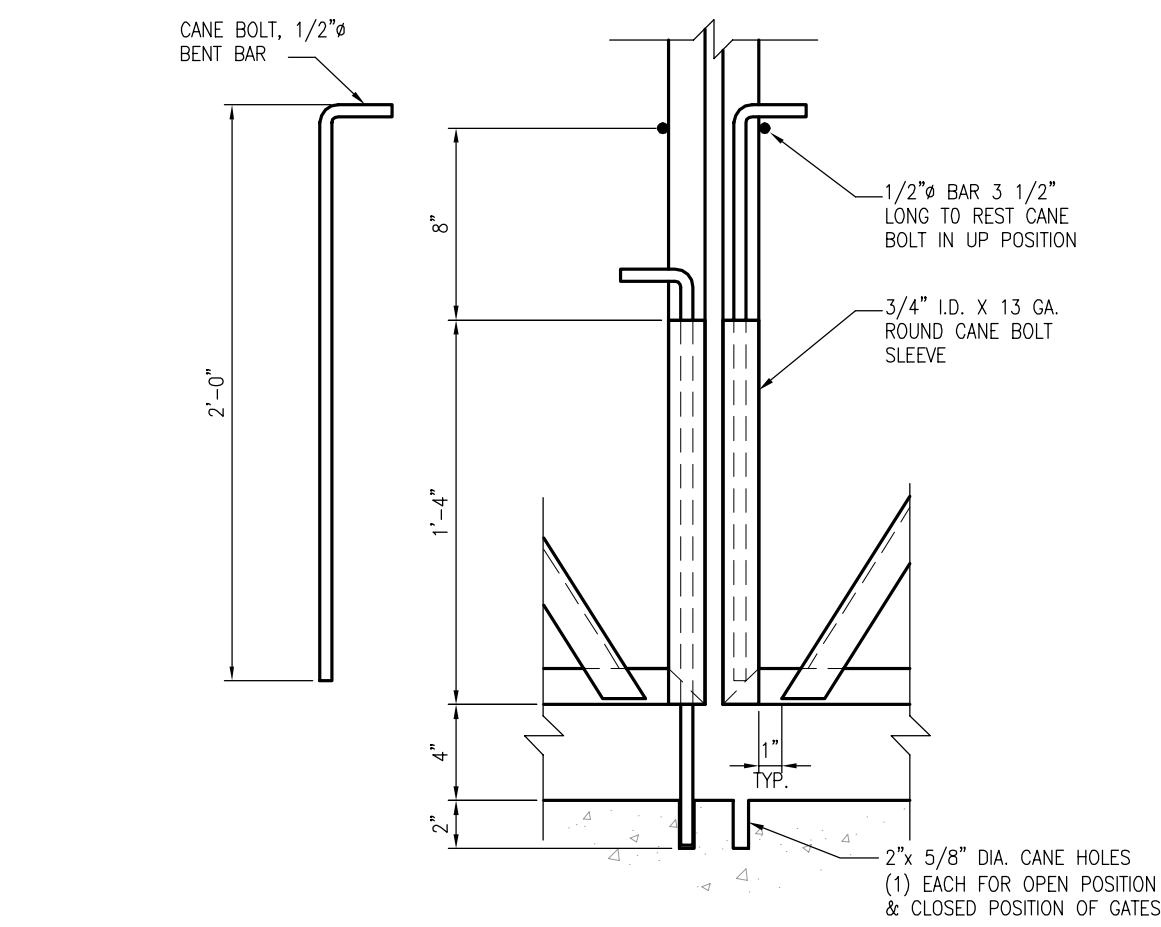
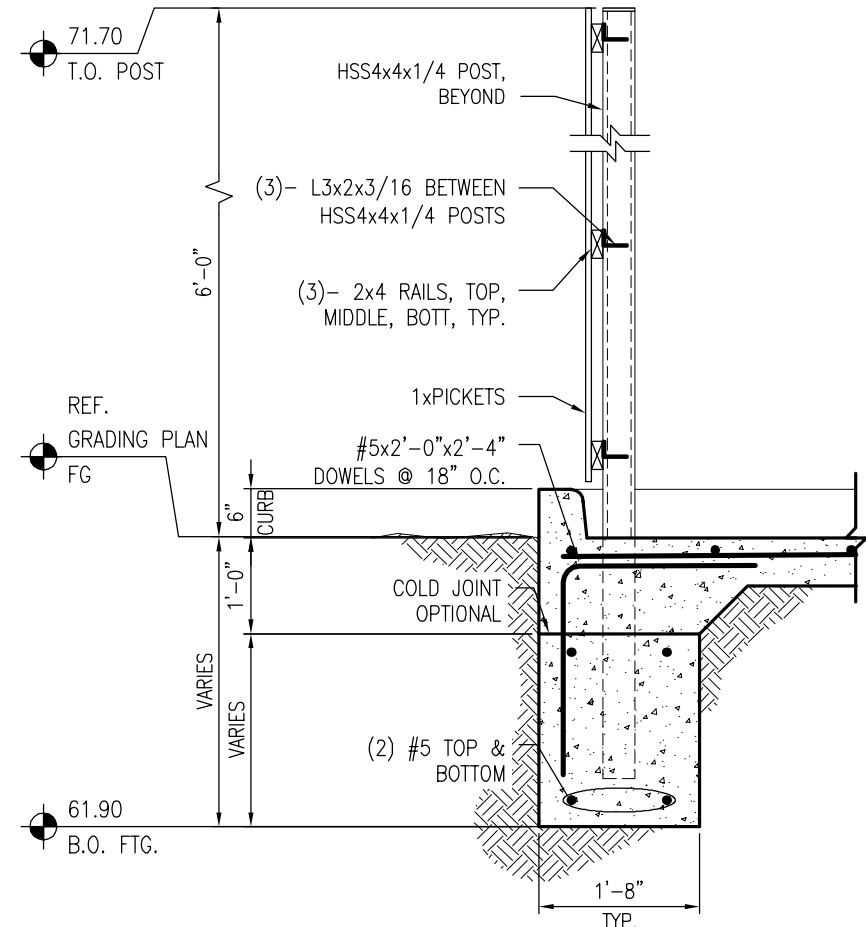


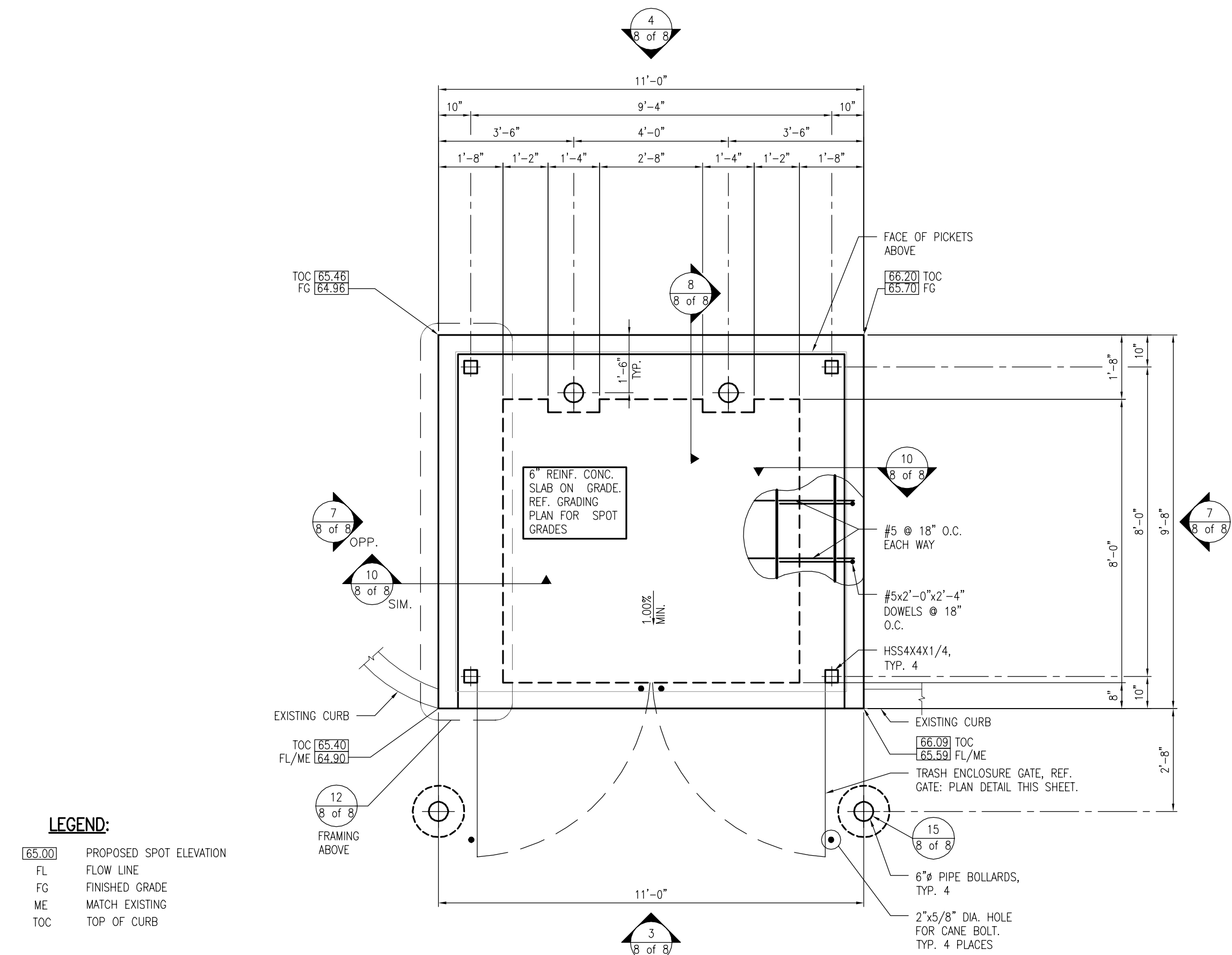
KING SOOPERS #49 FUEL SITE
SITE PLAN AND CONDITIONAL USE
BUCKEYE SUBDIVISION FILING NO. 1



14 CANE BOLT DETAIL
SCALE: 1 1/2" = 1'-0"

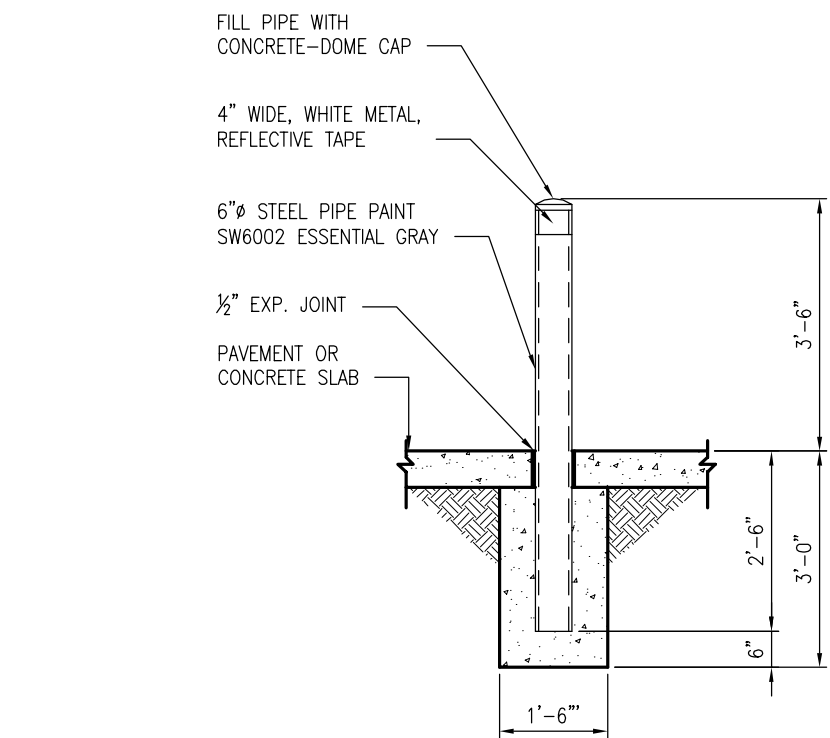


10 TYPICAL SECTION- END
SCALE: 1/2" = 1'-0"

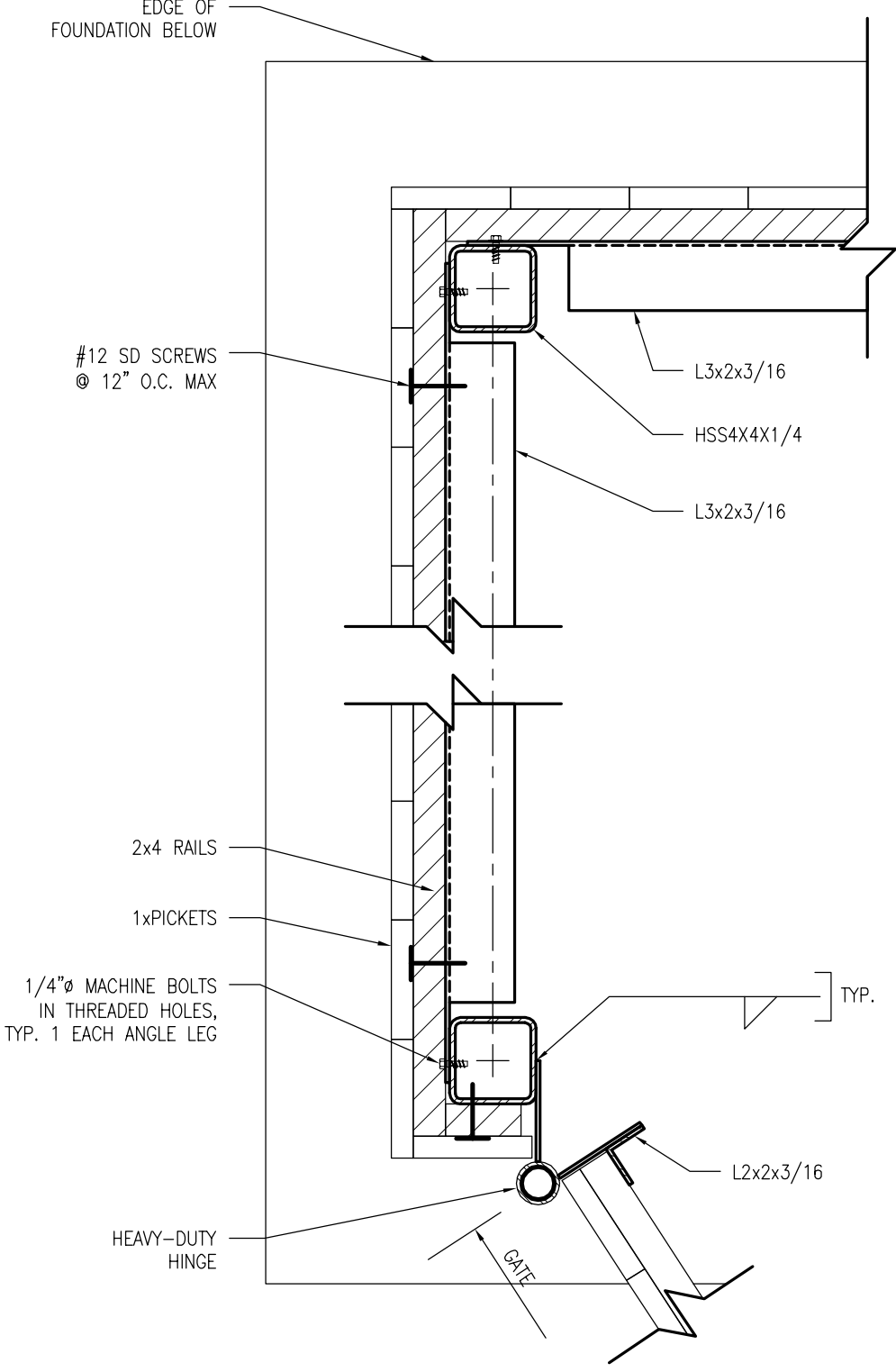


- LEGEND:
- [65.00] PROPOSED SPOT ELEVATION
 - FL FLOW LINE
 - FG FINISHED GRADE
 - ME MATCH EXISTING
 - TOC TOP OF CURB

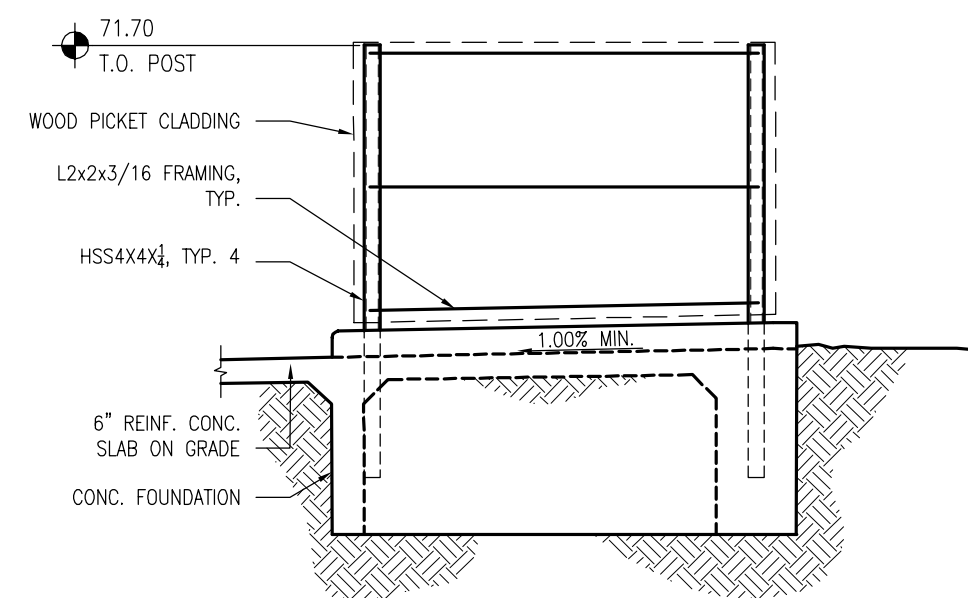
6 FOUNDATION PLAN
SCALE: 3/8" = 1'-0"



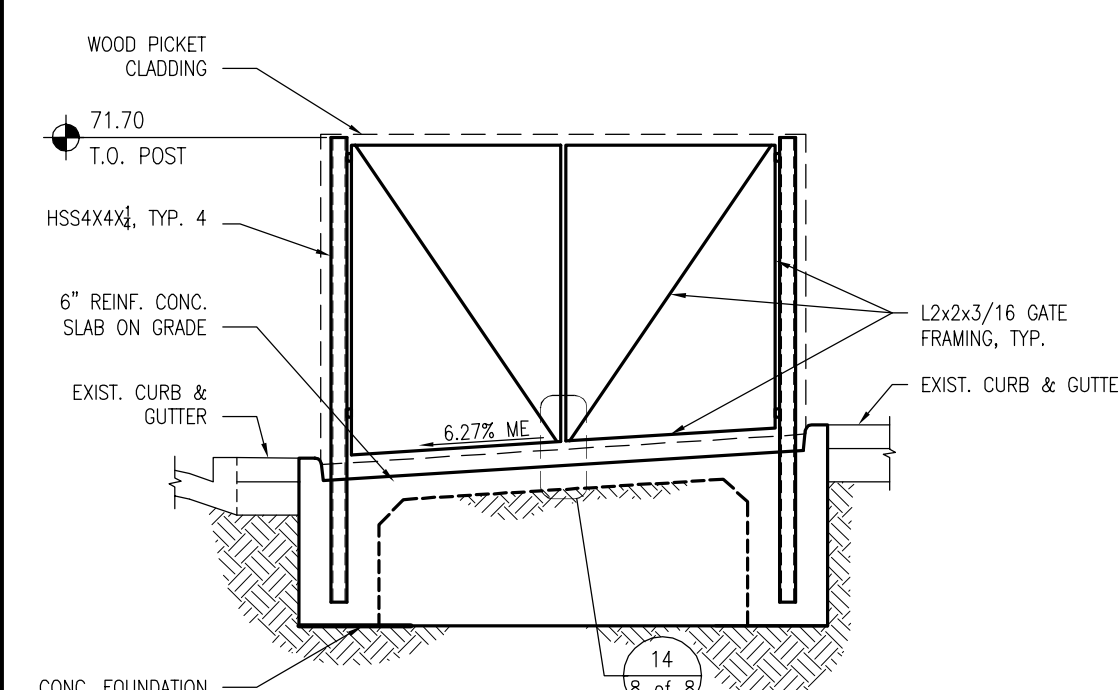
15 BOLLARD DETAIL
SCALE: 1/2" = 1'-0"



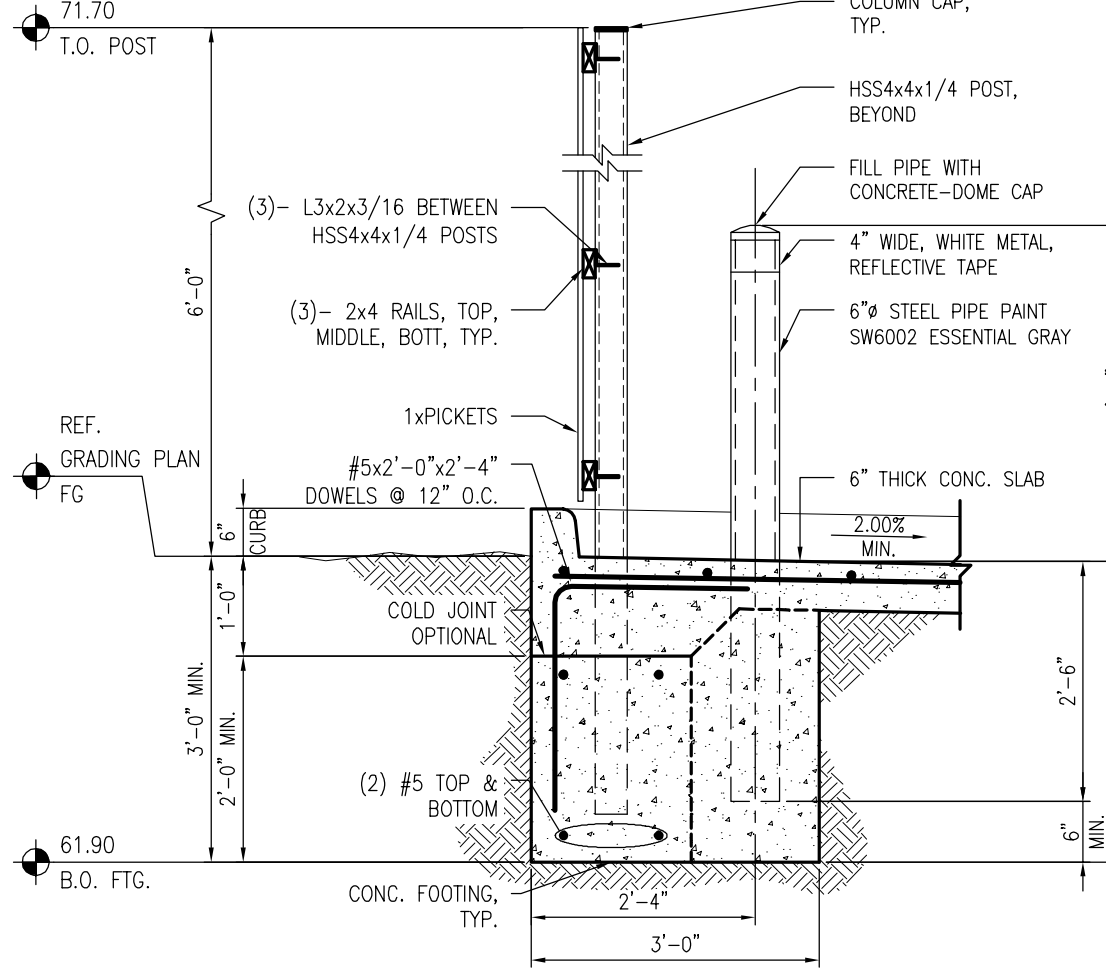
12 END WALL DETAIL
SCALE: 1 1/2" = 1'-0"



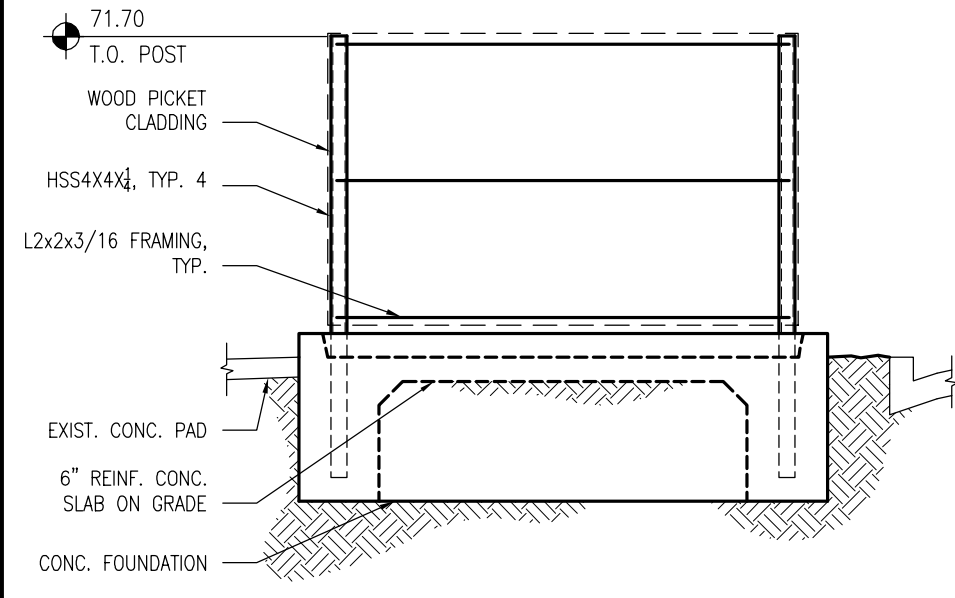
7 SIDE ELEVATION
SCALE: 1/4" = 1'-0"



3 FRONT ELEVATION
SCALE: 1/4" = 1'-0"



8 SECTION- REAR
SCALE: 1/2" = 1'-0"



4 REAR ELEVATION
SCALE: 1/4" = 1'-0"

KING SOOPERS
FUELING FACILITY #49
SITE PLAN AND CONDITIONAL USE

Project No: KSF000049
Sheet Scale: AS NOTED
Designed By: RAB
Drawn By: ER
Date: MARCH 2017

TRASH ENCLOSURE
PLAN & DETAILS

Galloway
Planning, Architecture, Engineering
6162 South Willow Drive, Suite 320
Greenwood Village, CO 80111
303.770.8884
www.gallowayus.com

King Soopers
Supermarket
Petroleum
65 Tejon Street
Aurora, CO 80013
Phone: (303) 778-3053
Fax: (303) 871-3262

2351 SOUTH BUCKLEY ROAD
AURORA, COLORADO