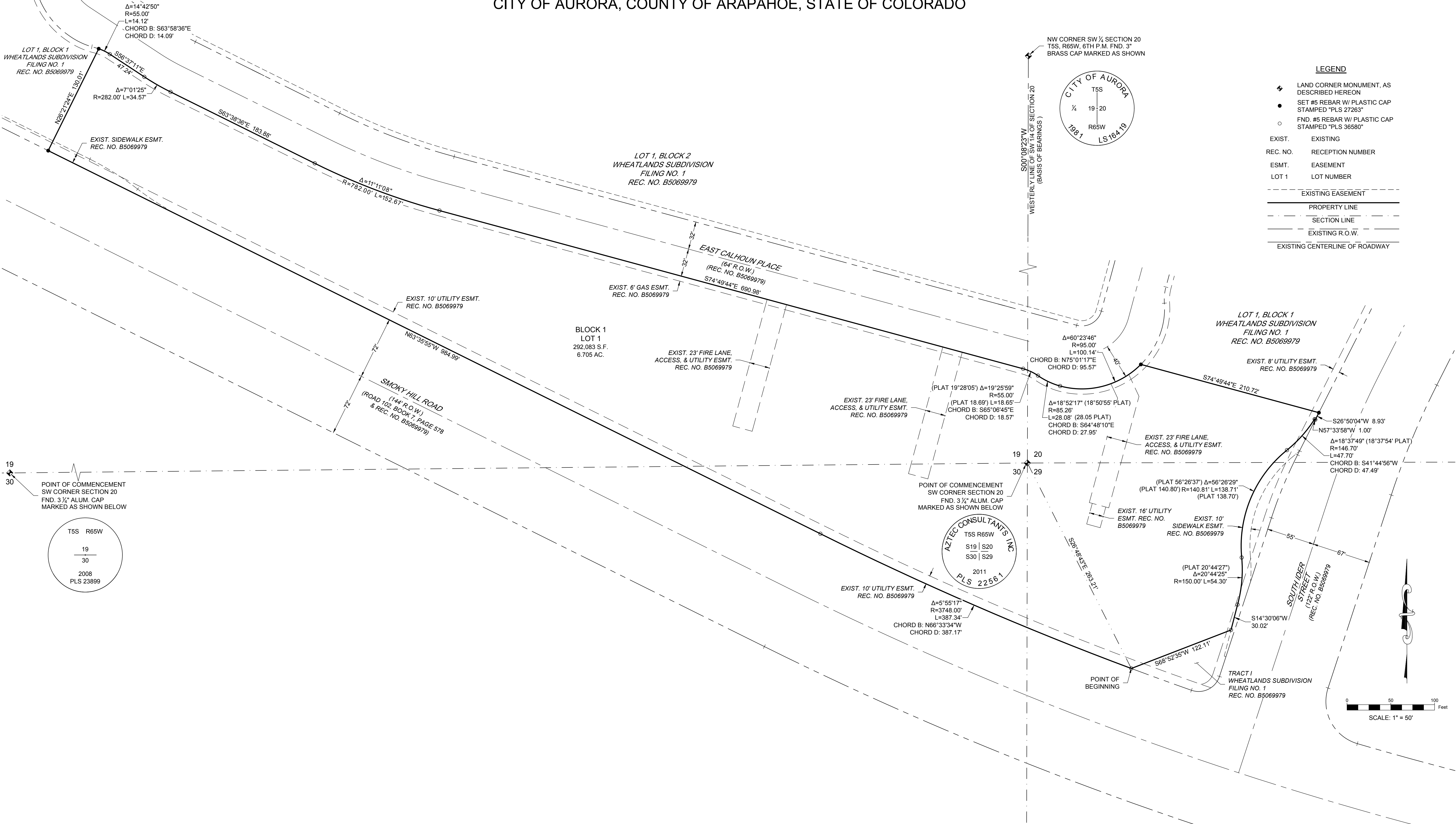


WHEATLANDS SUBDIVISION FILING NO. 13

A RESUBDIVISION OF A PART OF LOT 1, BLOCK 1, WHEATLANDS SUBDIVISION, FILING NO. 1
SITUATED IN THE SE ¼ OF SECTION 19, THE SW ¼ OF SECTION 20, THE NW ¼ OF SECTION 29, AND THE
NE ¼ OF SECTION 30, TOWNSHIP 5 SOUTH, RANGE 65 WEST OF THE THE SIXTH PRINCIPAL MERIDIAN,
CITY OF AURORA, COUNTY OF ARAPAHOE, STATE OF COLORADO



PREPARED FOR:
LOKAL COMMUNITIES, LLC.
8310 S. VALLEY HWY., SUITE 115
ENGLEWOOD, COLORADO 80112

DATE OF PREPARATION: 1/10/2018
PREPARED BY:
PARAGON ENGINEERING CONSULTANTS, INC.
7852 S. ELATI ST., SUITE 106
LITTLETON, COLORADO 80120 303-794-8604