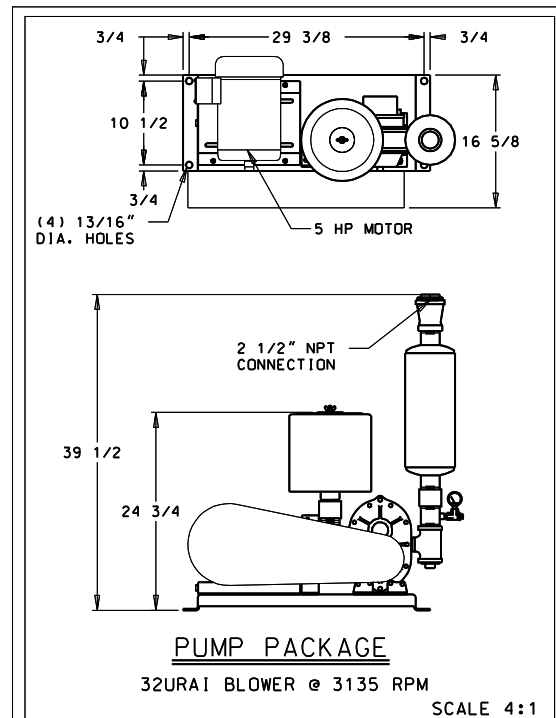


REVISIONS			
LTR.	DESCRIPTION	DATE	BY
B	RELEASED FOR CUSTOMER INFORMATION	10/19/04	AJB



- NOTES:
- ALL DIMENSIONS ARE IN INCHES.
  - 7 GA. C.S. CONSTRUCTION AND STRESSED FOR 20" W.C.
  - EXPLOSION VENTS PROVIDE A 65:1 VENT RATIO. (BASED ON FILTER VOLUME BELOW THE TUBESHEET.)
  - CUSTOMER TO PROVIDE SUPPLY LINE FROM PUMP PKG. OUTLET TO CONNECTION ON THE FILTER.
  - 1 H.P., EXPLOSION PROOF (NEMA 9) BALDOR MOTOR ROTATES THE INTERNAL CLEANING MECHANISM. 230/460/3/60Hz.
  - (2 EA.) 1/8" FNPT MUST HAVE PIPE PLUG IF DIFFERENTIAL PRESSURE GAUGE IS NOT USED.
  - HORIZONTAL DIMENSIONS ARE MEASURED ALONG HOUSING DIAMETER.
  - UNIT INCLUDES (416) 16 OZ. POLYESTER /DACRON FILTER BAGS WITH GALVANIZED BAG CAGES PROVIDING 5994 SQ. FT. OF CLOTH AND AN AIR TO CLOTH RATIO OF 8.4:1 @ 51,000 CFM.
  - ESTIMATED WEIGHT: 23,213 LBS. ESTIMATED WEIGHT CONSISTS OF FILTER, BAGS AND CAGES ONLY. IT DOES NOT INCLUDE STRUCTURE, SERVICE PLATFORM, LADDER, SAFETY CAGE OR DISCHARGE ACCESSORIES.
  - PAINT: MAC WHITE
  - FILTER SERIAL #: 67319-001-3 PUMP SERIAL #: 67319-001-4

This print is certified to be dimensionally correct to  $\pm 1/4$  inch on all components,  $\pm 1/2$  on overall dimensions up to 120 inches and  $\pm 1 1/2$  on all dimensions greater than 120.

MAC EQUIPMENT, INC.

BY: *ANDREW S. HARTMAN* DATE: 10/19/04

macprocess  
schmidt process group

THIS MATERIAL IS THE PROPERTY OF MAC PROCESS INC. AND SHOULD NOT BE REPRODUCED, PUBLISHED OR DISCLOSED TO OTHERS WITHOUT AUTHORIZATION AND SHALL NOT BE USED IN ANY WAY AGAINST OR DETRIMENTAL TO MAC PROCESS INC., SABBETHA, KANSAS.

144MCF416 STYLE III  
TANGENTIAL INLET FILTER  
WITH STRUCTURE FOR  
MEDALLION CABINETRY

DRAWN BY: <b>AJB</b> DATE: <b>09/09/04</b>	SCALE: <b>1/48"=1"</b>	JOB NO.: <b>67319</b>	DRAWING NO.: <b>D48803</b>	REV.: <b>B</b>
---	------------------------	-----------------------	----------------------------	----------------

10-22-2004 10:17:45 AJB