

EXHIBIT A

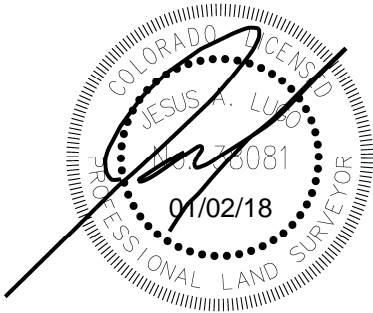
A **PUBLIC ACCESS AND FIRE LANE EASEMENT** OVER A PARCEL OF LAND AS DESCRIBED IN THE WARRANTY DEED RECORDED DECEMBER 21, 1987 IN BOOK 5334 AT PAGE 538, IN THE OFFICE OF THE CLERK AND RECORDER OF ARAPAHOE COUNTY, BEING A PORTION OF BLOCK 17, AURORA HILLS-FILING NO. NINE, IN THE CITY OF AURORA, COUNTY OF ARAPAHOE, STATE OF COLORADO, PER THE PLAT RECORDED OCTOBER 16, 1964 AT RECEPTION NO. 933522 IN SAID OFFICE OF THE CLERK AND RECORDER, LYING WITHIN THE SOUTHWEST QUARTER OF SECTION 13, TOWNSHIP 4 SOUTH, RANGE 67 WEST OF THE 6TH PRINCIPAL MERIDIAN, IN SAID CITY, COUNTY AND STATE, BEING MORE PARTICULARLY DESCRIBED AS FOLLOWS:

COMMENCING AT THE SOUTHEAST CORNER OF SAID PARCEL OF LAND AS DESCRIBED IN BOOK 5334 AT PAGE 538, FROM WHICH THE SOUTH LINE OF SAID PARCEL OF LAND, ALSO BEING THE SOUTH LINE OF SAID BLOCK 17, BEARS SOUTH 89°29'02" WEST, WITH ALL BEARINGS HEREIN BEING REFERENCED TO SAID SOUTH LINE; THENCE ALONG SAID SOUTH LINE, SOUTH 89°29'02" WEST, A DISTANCE OF 33.69 FEET TO THE **POINT OF BEGINNING**; THENCE CONTINUING ALONG SAID SOUTH LINE, SOUTH 89°29'02" WEST, A DISTANCE OF 23.00 FEET; THENCE DEPARTING SAID SOUTH LINE, NORTH 00°21'18" EAST, A DISTANCE OF 175.02 FEET TO THE NORTH LINE OF SAID PARCEL OF LAND DESCRIBED IN BOOK 5334 AT PAGE 538; THENCE ALONG SAID NORTH LINE, NORTH 89°29'02" EAST, A DISTANCE OF 23.00 FEET; THENCE DEPARTING SAID NORTH LINE, SOUTH 00°21'18" WEST, A DISTANCE OF 175.02 FEET TO SAID SOUTH LINE OF PARCEL OF LAND DESCRIBED IN BOOK 5334 AT PAGE 538 AND THE **POINT OF BEGINNING**.

CONTAINS 4,025 SQUARE FEET OR 0.092 ACRES, MORE OR LESS.

ALL LINEAL DISTANCE UNITS ARE SHOWN IN U.S. SURVEY FEET.

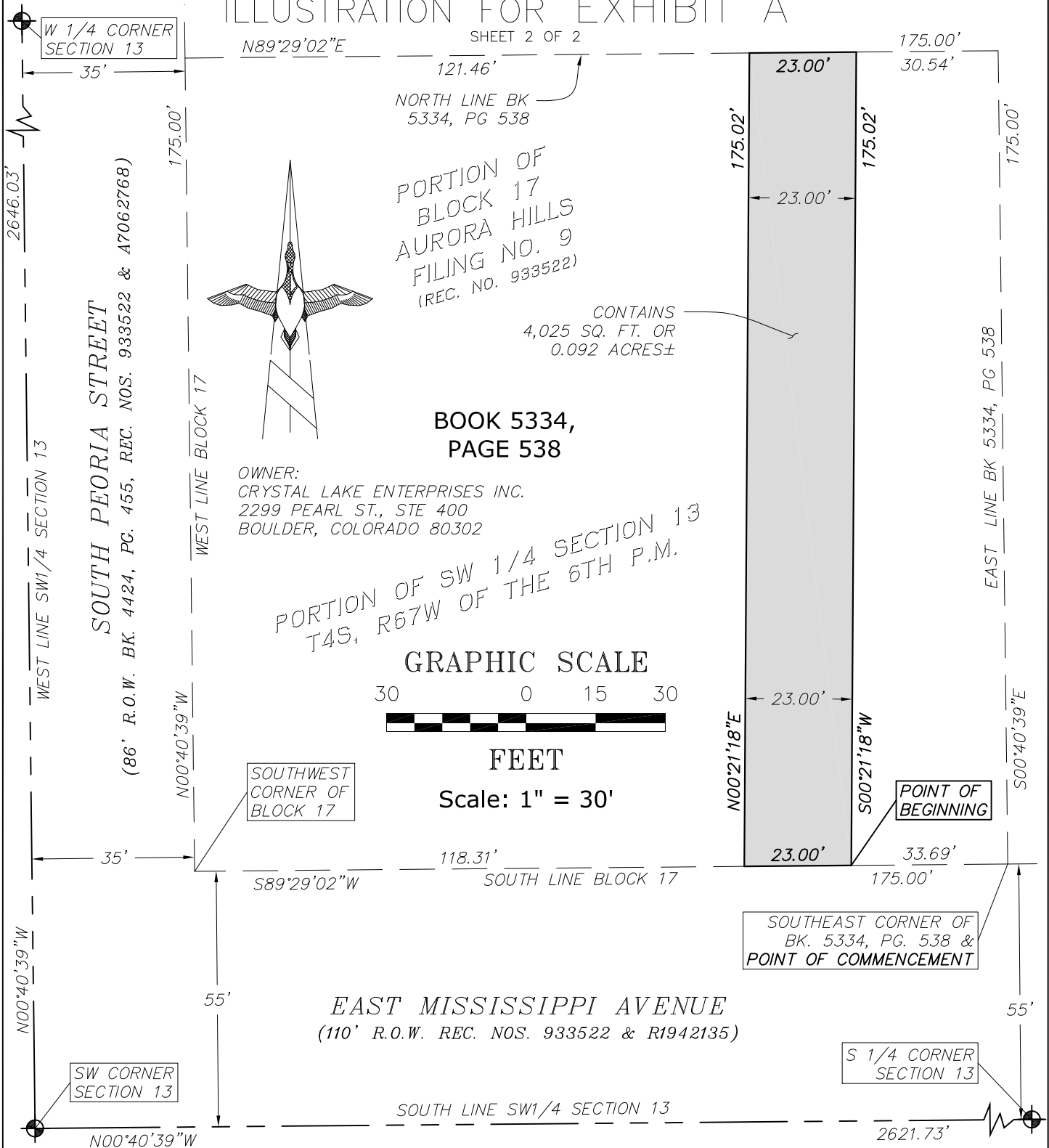
AS SHOWN ON THE ILLUSTRATION FOR EXHIBIT "A" ATTACHED HERETO, MADE A PART HEREOF.



JESUS A. LUGO, PLS 38081
COLORADO LICENSED PROFESSIONAL LAND SURVEYOR
FOR AND ON BEHALF OF ALTURA LAND CONSULTANTS, LLC
6551 SO. REVERE PARKWAY, SUITE 165
CENTENNIAL, CO 80111

ILLUSTRATION FOR EXHIBIT A

SHEET 2 OF 2



This illustration does not represent a monumented survey. It is intended only to depict the attached legal description.

CITY OF AURORA, COLORADO

A PUBLIC ACCESS & FIRE LANE EASEMENT SITUATED IN THE SW 1/4 OF SECTION 13, T4S, R67W, 6TH P.M., CITY OF AURORA, COUNTY OF ARAPAHOE, STATE OF COLORADO, BEING A PART OF BLOCK 17, AURORA HILLS—FILING NO. NINE

DRAWN BY: KJS

SCALE: 1" = 30'

R.O.W. FILE NUMBER PUBLIC ACCESS EASEMENT

CHECKED BY: JAL

DATE: 11/14/17

JOB NUMBER: 17229