

CITY OF AURORA APPROVALS:

This Tree Protection Plan is approved in accordance with the City of Aurora Black Forest Ordinance

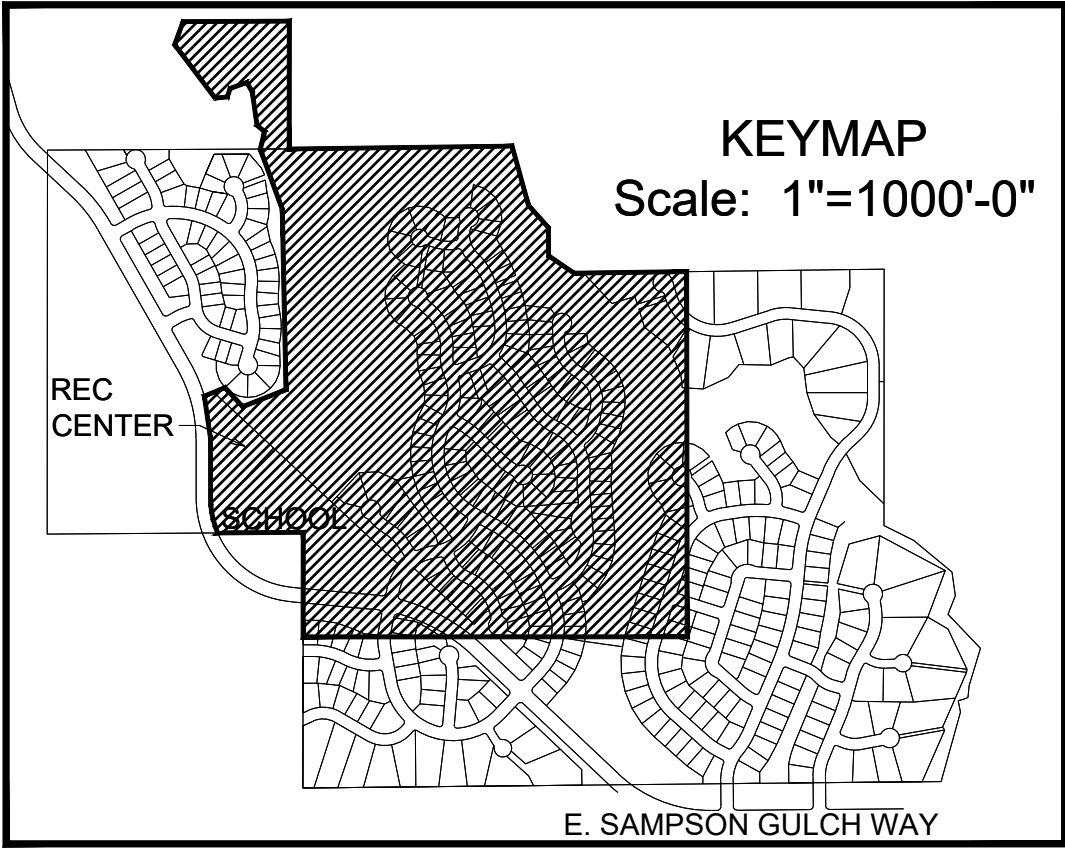
Forestry Division: _____ Date: _____

RECORDER'S CERTIFICATE

Accepted for filing in the Clerk and Recorder of _____

Colorado, at _____ o'clock _____ M, this day of _____ AD, 20 _____.

Clerk and Recorder: _____ Deputy: _____



PREPARED FOR:
Ryland Homes
6161 S. Syracuse Way,
Suite 200
Greenwood Village, CO.
80111
tel 303.486.5000

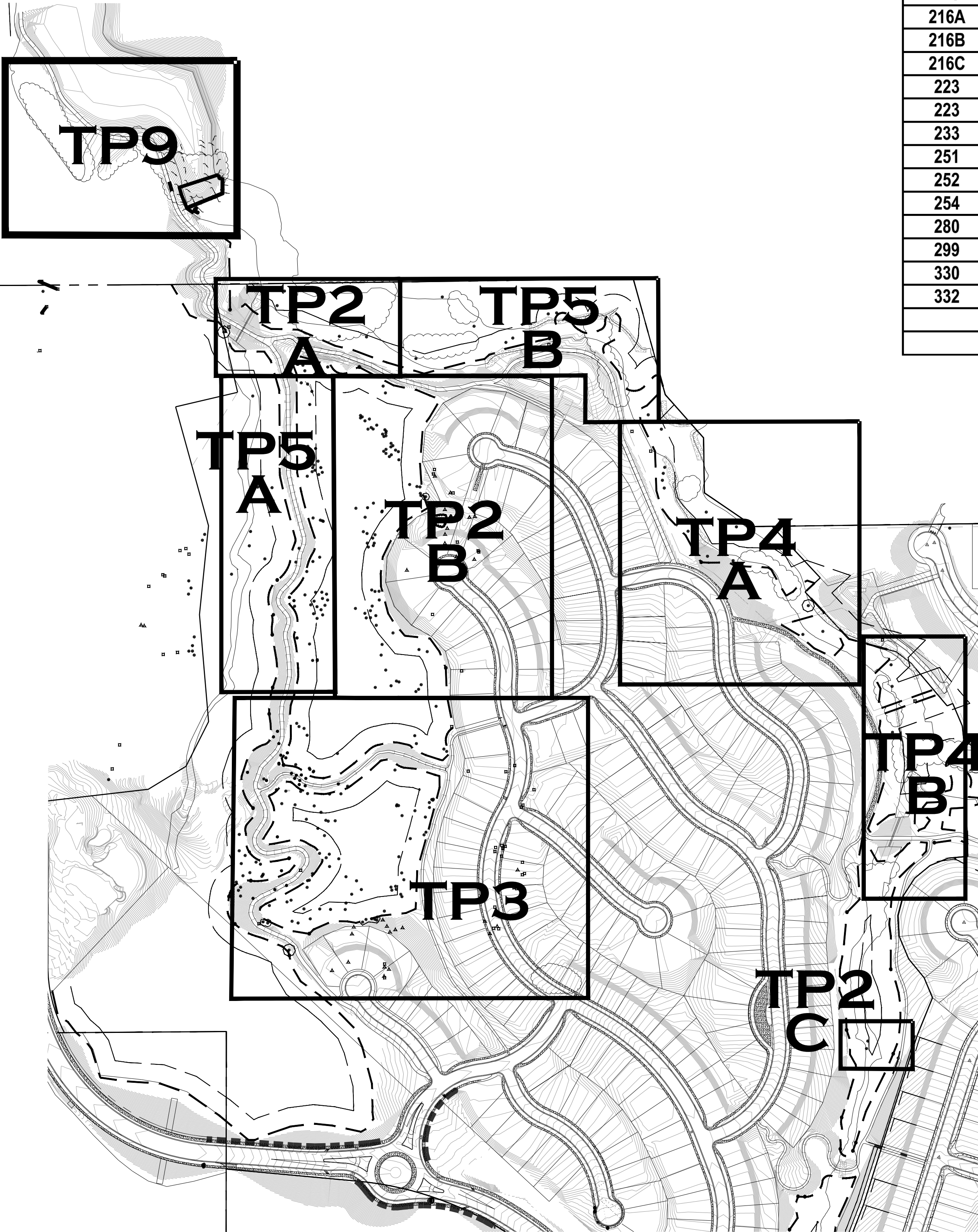
LAND PLANNING
PCS
GROUP Inc.
1001 16th St. B-180
Denver, CO 80265
tel 303.531.4905

Whispering Pines
Aurora, Colorado
CSP #6 - TREE PROTECTION PLAN

Drawn by: JW
Checked by: JP
Issue Date: 3.13.15
Revision: 6.07.18
Revision: 2.28.19
Extension: _____

SHEET NAME
Tree
Protection
Plan

SHEET NUMBER
TP1



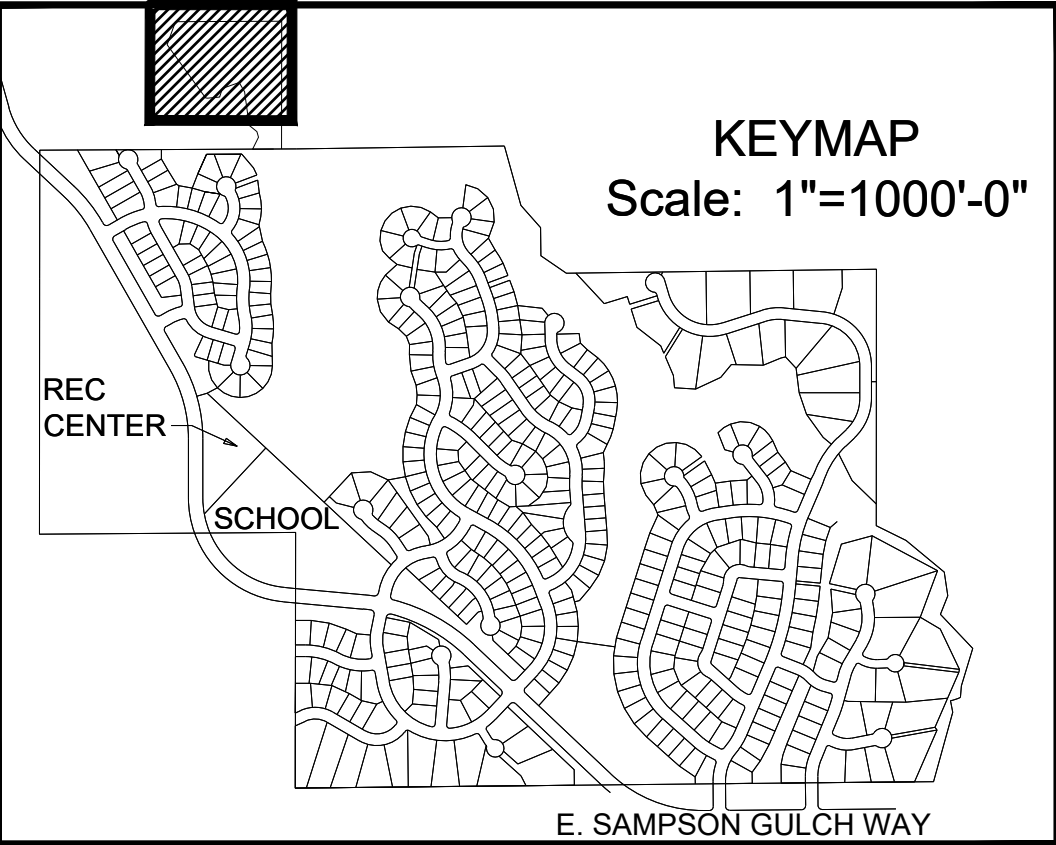
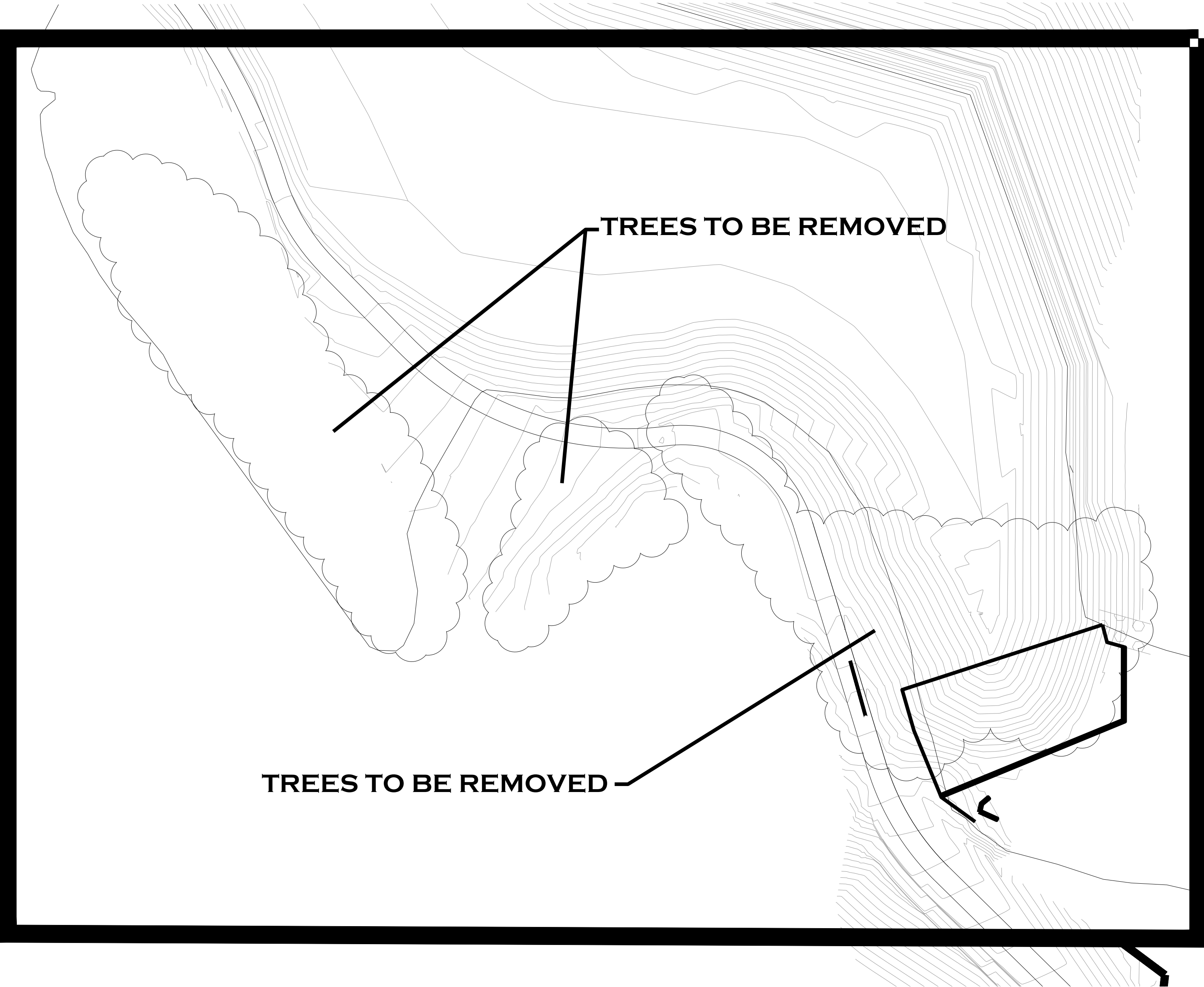
Trees Escrow							
TREE #	DBH	HGT	AGE	Spec. %	LOC. %	Cond. %	VALUE
167	14	40	80	0.8	0.7	0.8	\$ 2,763
199	19	55	120	0.8	0.7	0.3	\$ 1,926
200	21	55	120	0.8	0.7	0.3	\$ 2,297
201	20	55	120	0.8	0.7	0.3	\$ 2,086
213	11	40	80	0.8	0.7	0.5	\$ 1,084
214	8	30	65	0.8	0.7	0.8	\$ 951
215	11	35	65	0.8	0.7	0.8	\$ 1,734
216A	8	35	65	0.8	0.7	0.5	\$ 595
216B	6	20	60	0.8	0.7	0.5	\$ 355
216C	6	25	60	0.8	0.7	0.5	\$ 355
223	15	50	120	0.8	0.7	0.3	\$ 1,227
223	15	50	120	0.8	0.7	0.3	\$ 1,185
233	17	50	120	0.8	0.7	0.3	\$ 1,515
251	17	60	100	0.8	0.7	0.3	\$ 1,515
252	17	55	100	0.8	0.7	0.3	\$ 1,515
254	10	35	35	0.8	0.7	0.8	\$ 1,446
280	15	55	120	0.8	0.7	0.5	\$ 1,976
299	20	65	120	0.8	0.7	0.3	\$ 2,086
330	7	25	50	0.8	0.7	0.8	\$ 856
332	14	45	85	0.8	0.7	0.8	\$ 2,873
Total Escrow for CSP#6 =							\$ 30,336

Trees to be Relocated			
Tree #	DBH	LOC. %	Cond. %
168	13	0.7	0.8
169	14	0.7	0.8
170	16	0.7	0.8
172	12	0.7	0.8
174	12	0.7	0.8
176	7	0.7	0.5
179	10	0.7	0.8
180	8	0.7	0.3
185	7	0.7	0.8
211	15	0.7	0.8
212	9	0.7	0.8
218	7	0.7	0.5
219	9	0.7	0.8
220	14	0.7	0.8
221	12	0.7	0.8
222	10	0.7	0.5
283	13	0.7	0.8
284	8	0.7	0.8
285	10	0.7	0.8
286	11	0.7	0.8
289	12	0.7	0.8
290	7	0.7	0.7
291	8	0.7	0.8
292	11	0.7	0.5

294	11	0.7	0.5
295	15	0.7	0.8
296	12	0.7	0.5
298	14	0.7	0.5
304	11	0.7	0.5
2000	3	-	-
2001	3	-	-
2002	3	-	-
2003	3	-	-
2004	3	-	-

Trees to be Removed					
Tree #	SPECIES	DBH	LOC. %	Cond. %	Mitigation Inches
171	PP	9	0.7	0.1	0.9
173	PP	8	0.7	0.1	0.8
175	PP	12	0.7	0	0.0
177	PP	5	0.7	0.1	0.5
178	PP	9	0.7	0.3	2.7
181	PP	18	0.7	0.6	10.8
182 A	PP	9	0.7	0.3	2.7
182 B	PP	6	0.7	0.3	1.8
182 C	PP	6	0.7	0.3	1.8
183	PP	10	0.7	0.5	5.0
184	PP	7	0.7	0.1	0.7
186	PP	4	0.7	0.1	0.4
187	PP	14	0.7	0.3	4.2
188	PP	12	0.7	0.3	3.6
189	PP	16	0.7	0.3	4.8
190	PP	9	0.7	0.1	0.9
191	PP	17	0.7	0.5	8.5
192	PP	5	0.7	0.1	0.5
193	PP	7	0.7	0	0.0
194	PP	12	0.7	0	0.0
195	PP	14	0.7	0	0.0
196	PP	21	0.7	0.1	2.1
197	PP	15	0.7	0.4	2.1
198	PP	16	0.7	0.1	1.6
199	PP	19	0.7	0.3	5.7
253	PP	9	0.7	0	0.0
258	PP	20	0.7	0	0.0
261	PP	21	0.7	0.3	6.3
287A	PP	8	0.7	0.1	0.8
287B	PP	10	0.7	0.1	1.0
288	PP	28	0.7	0.1	2.8
293	PP	10	0.7	0.5	5.0
297	PP	9	0.7	0.3	2.7
305	PP	8	0.7	0.3	2.4
306	PP	10	0.7	0.3	3.0
2038	PP	14	0.7	0.8	11.2

Evergreen Mitigation Inches					97.3
CW92	WIL	14	0.5	0.1	1.4
CW43	CW	22	0.5	0.1	2.2
CW102A	CW	14	0.5	0.1	1.4
CW102B	CW	18	0.5	0.1	1.8
CW105	CW	76	0.5	0.1	0.8
CW129	CW	38	0.5	0.1	3.8
CW144A	WIL	12	0.5	0.1	1.2
CW144B	WIL	12	0.5	0.1	1.2
Deciduous Tree Mitigation Inches					13.8
Regional Detention Pond/Drainage Tree Mitigation Inches					488.4
Total Mitigation Inches					599.5



PREPARED FOR:
Ryland Homes
6161 S. Syracuse Way,
Suite 200
Greenwood Village, CO.
80111
tel 303.486.5000

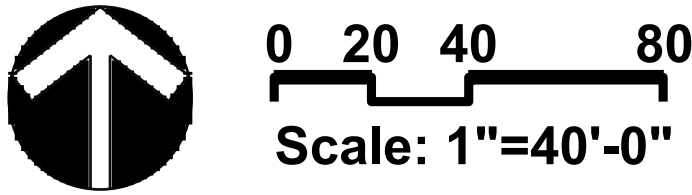
■ LAND PLANNING ■
PCS
GROUP Inc.
1001 16th St. B-180
Denver, CO 80265
tel 303.531.4905

Whispering Pines
Aurora, Colorado
CSP #6 - TREE PROTECTION PLAN

Drawn by: JW
Checked by: JP
Issue Date: 3.13.15
Revision: 11.15.17
Revision: 2.28.19
Extension: _____

REGIONAL DETENTION POND AREA*

* SEE SHEET TP10 FOR INVENTORY AND REMOVALS



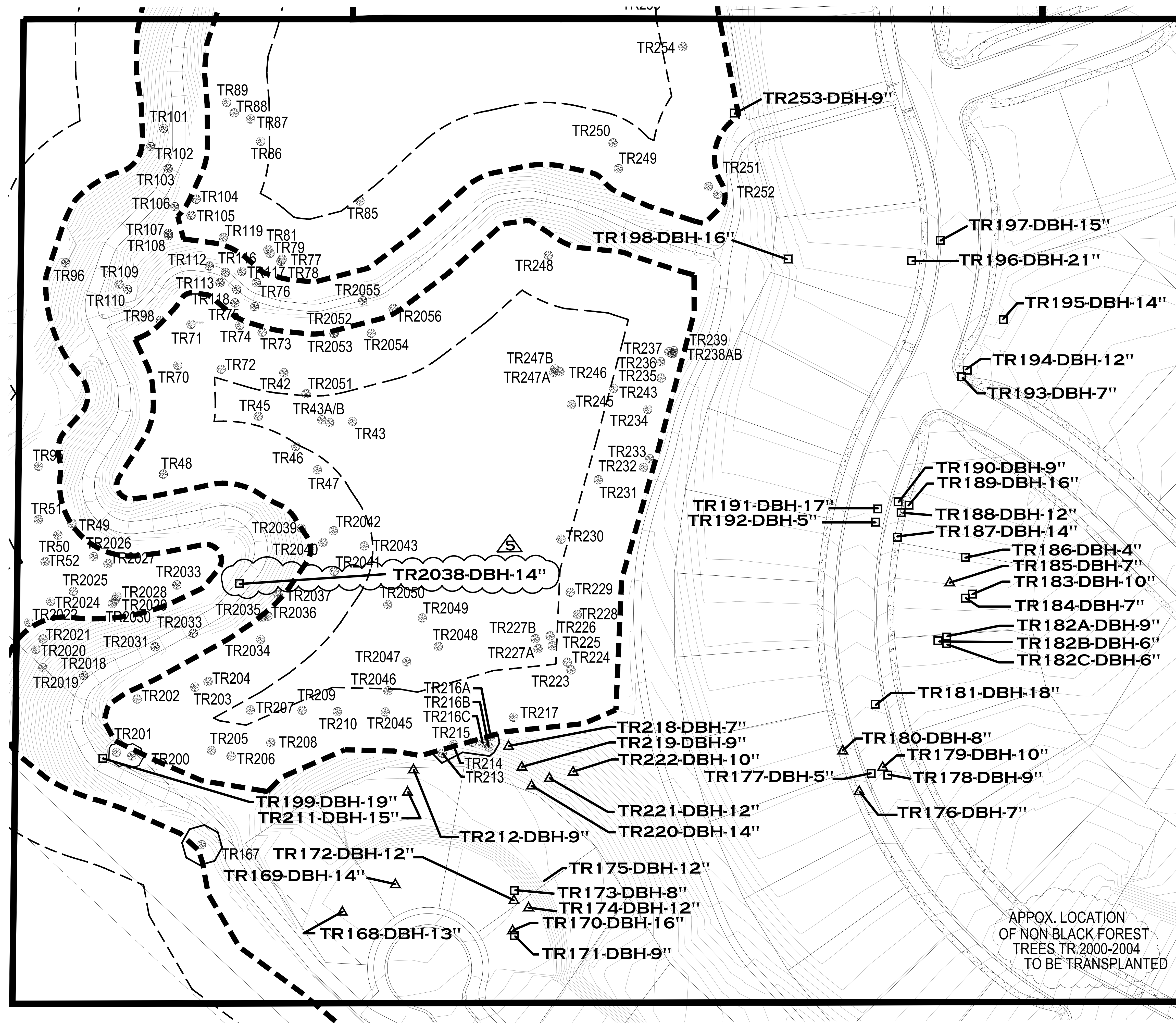
5

City of Aurora Plan Submittal	Relocated Trees	Trees to be removed and mitigated for			Trees to be removed but not mitigated for	
	# of Trees to be relocated on said plan	# of Trees to be removed from said plan**	(Cal.) inch total needed for mitigation	Total # of trees for mitigation	# of Trees to be removed	(Cal.) inches
DA-1737-08	36 Ponderosa Pines*	36 Ponderosa Pines	97.3	50 (10' Tall Ponderosa Pines)	0	0
		209 Cottonwoods	485.4	89 (3.5"cal Cottonwoods)	37	55
		12 Willows	16.8	16 (2.5"cal Willows)	0	0
Totals:		237	599.5	153	37	55

* INCLUDED 5 NON BLACK FOREST TREES
** TREES REQUIRING MITIGATION

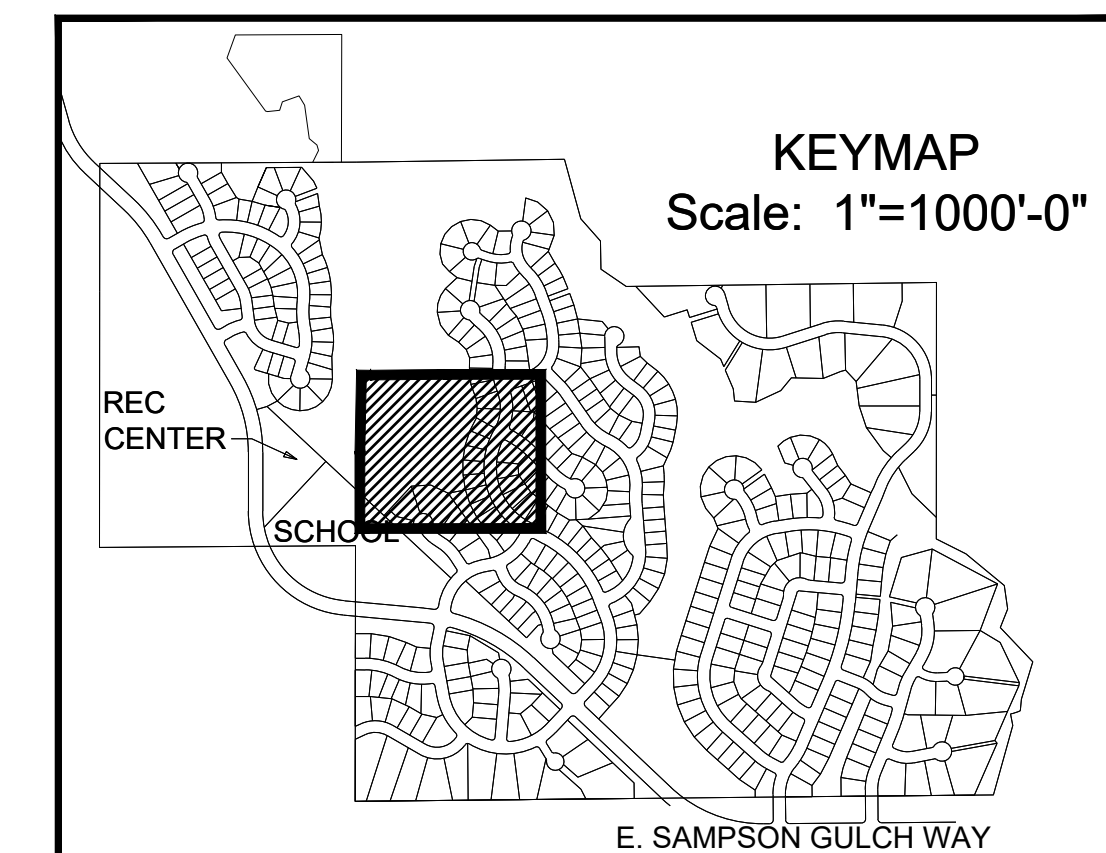
SHEET NAME
Tree Protection Plan

SHEET NUMBER
TP9



LEGEND

- TREES-UNDISTURBED
- TREE TO BE REMOVED
- △ TREES TO BE MOVED
- LIMIT OF CONSTRUCTION
- BUFFER LINE
- BARRIER FENCE



0 20 40 80
Scale: 1"=40'-0"

APPROX. LOCATION
OF NON-BLACK FOREST
TREES TR.2000-2004
TO BE TRANSPLANTED

PREPARED FOR:
Ryland Homes
6161 S. Syracuse Way,
Suite 200
Greenwood Village, CO.
80111
tel 303.486.5000

LAND PLANNING
PCS
GROUP Inc.
1001 16th St. B-180
Denver, CO 80265
tel 303.531.4905

Whispering Pines
Aurora, Colorado
CSP #6 - TREE PROTECTION PLAN

Drawn by: JW
Checked by: JP
Issue Date: 3.13.15
Revision: 6.07.18
Revision: 2.28.19
Extension:

SHEET NAME
Tree
Protection
Plan

SHEET NUMBER
TP3