

EXISTING VIEW FROM LOCATION 1

Site Name: DN02359A Cherry Ridge

919 Peoria Street
Aurora, CO 80012
(Arapahoe County)

T · · Mobile ·

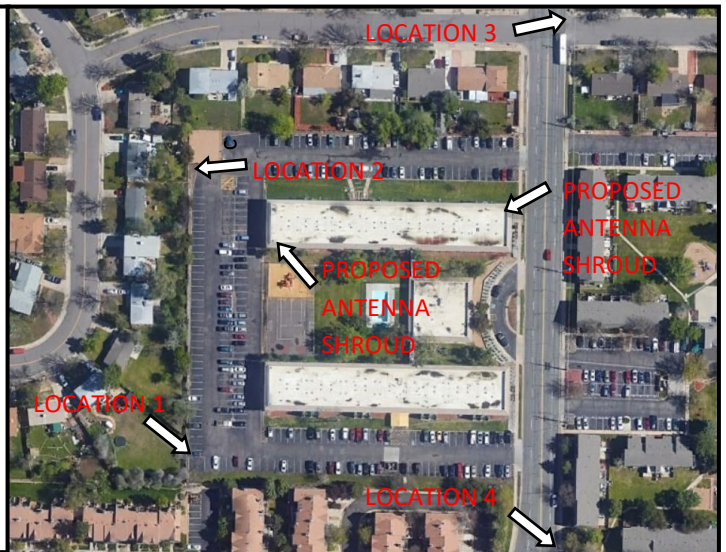


PHOTO RENDERING BY TOWER ENGINEERING PROFESSIONALS, INC.

PROPOSED VIEW FROM LOCATION 1

Site Name: DN02359A Cherry Ridge

919 Peoria Street
Aurora, CO 80012
(Arapahoe County)

T · · Mobile ·



PHOTO RENDERING BY TOWER ENGINEERING PROFESSIONALS, INC.

EXISTING VIEW FROM LOCATION 2

Site Name: DN02359A Cherry Ridge

919 Peoria Street
Aurora, CO 80012
(Arapahoe County)

T · · Mobile ·

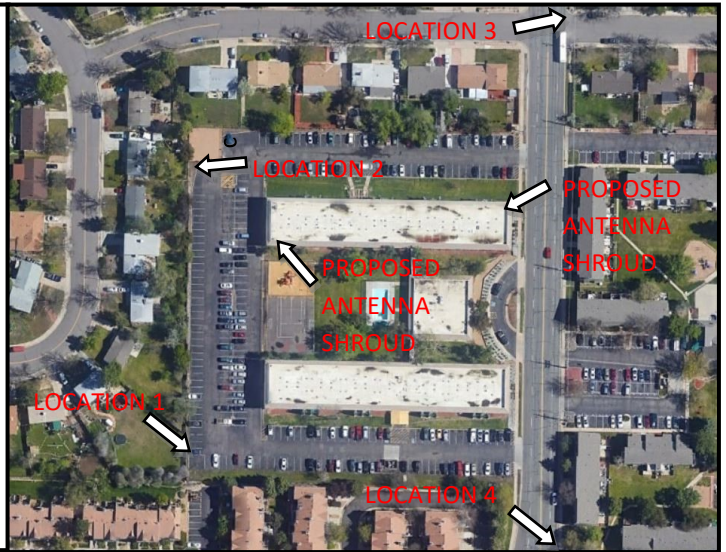


PHOTO RENDERING BY TOWER ENGINEERING PROFESSIONALS, INC.

PROPOSED VIEW FROM LOCATION 2

Site Name: DN02359A Cherry Ridge

919 Peoria Street
Aurora, CO 80012
(Arapahoe County)

T · · Mobile ·



PHOTO RENDERING BY TOWER ENGINEERING PROFESSIONALS, INC.

EXISTING VIEW FROM LOCATION 3

Site Name: DN02359A Cherry Ridge

919 Peoria Street
Aurora, CO 80012
(Arapahoe County)

T · · Mobile ·



PHOTO RENDERING BY TOWER ENGINEERING PROFESSIONALS, INC.

PROPOSED VIEW FROM LOCATION 3

Site Name: DN02359A Cherry Ridge

919 Peoria Street
Aurora, CO 80012
(Arapahoe County)

T · · Mobile ·

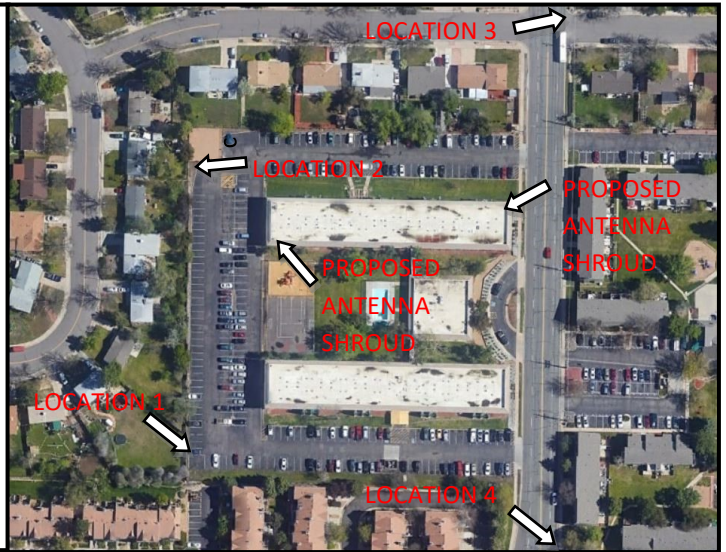


PHOTO RENDERING BY TOWER ENGINEERING PROFESSIONALS, INC.

EXISTING VIEW FROM LOCATION 4

Site Name: DN02359A Cherry Ridge

919 Peoria Street
Aurora, CO 80012
(Arapahoe County)

T · · Mobile ·

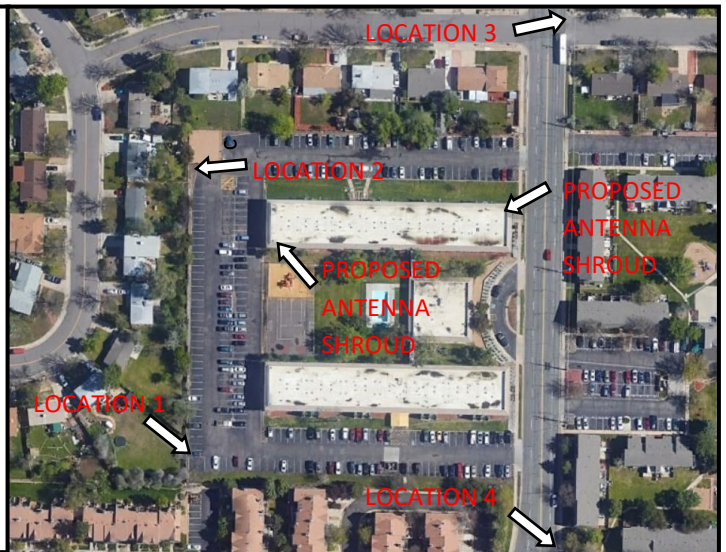


PHOTO RENDERING BY TOWER ENGINEERING PROFESSIONALS, INC.

PROPOSED VIEW FROM LOCATION 4

Site Name: DN02359A Cherry Ridge

919 Peoria Street
Aurora, CO 80012
(Arapahoe County)

T · · Mobile ·

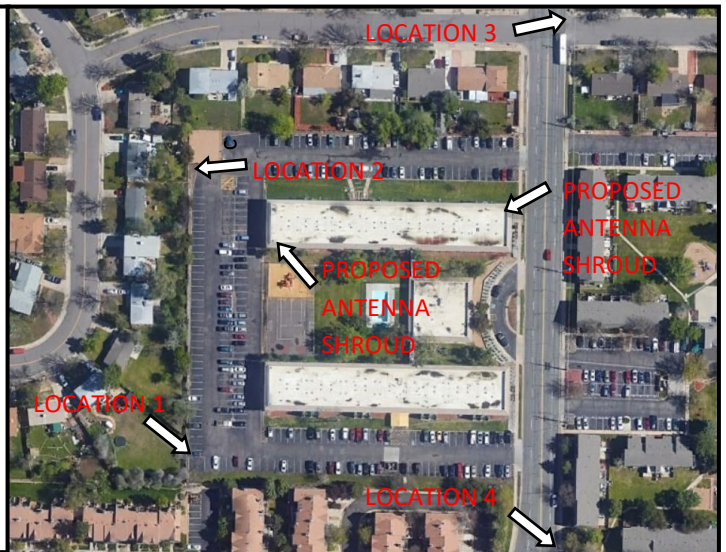


PHOTO RENDERING BY TOWER ENGINEERING PROFESSIONALS, INC.