

# RESEARCH PLAZA

23 APR. '84 SCALE: 1" = 20'-0"

MICHAEL S. BELLO  
LANDSCAPE ARCHITECT  
623-7031

SHEET L2

RESEARCH PLAZA

84-6013-1 of 4 L/S

## RESEARCH PLAZA

SOUTH ABILENE STREET AND EAST FLORIDA AVENUE  
AURORA, COLORADO

### DATE REVISIONS

4-11-84 AS PER COMMENTS  
4-25-84 AS PER COMMENTS

### DATE PRINT-USE

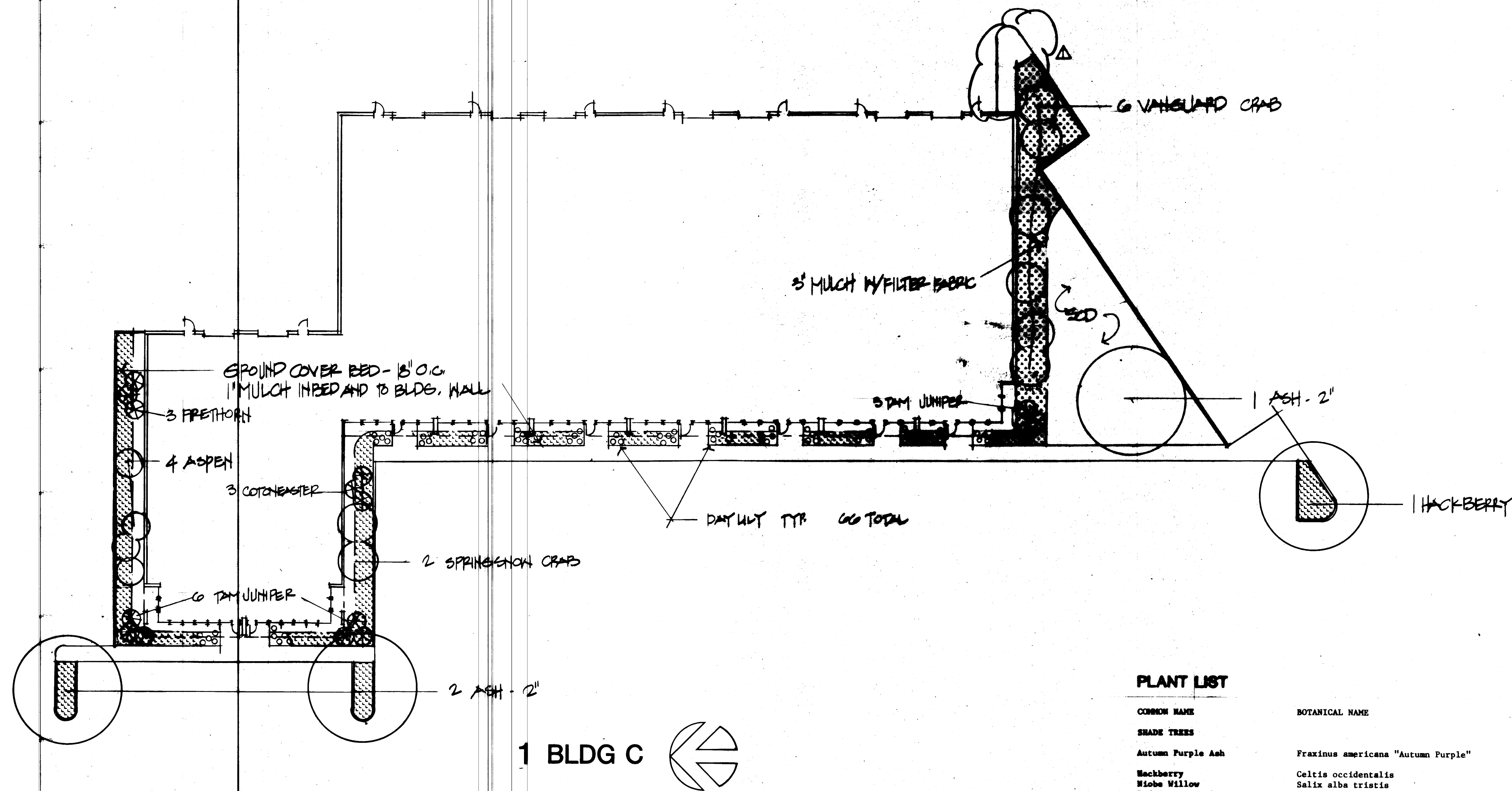
3-19-84 SUBMITTAL

### SHEET

LANDSCAPE PLAN

P B G





# PLANT LIST

COMMON NAME	BOTANICAL NAME	SIZE	QUANTITY
<b>SHADE TREES</b>			
Autumn Purple Ash	Fraxinus americana "Autumn Purple"	3" cal.	1
Hackberry	Celtis occidentalis	2" cal.	10
Niobe Willow	Salix alba tristis	2" cal.	10
Red Sunset Maple	Acer rubrum "Red Sunset"	3" cal.	2
		2 1/2" cal.	3
<b>EVERGREEN TREES</b>			
Austrian Pine	Pinus nigra	14' ht.	1
<b>ORNAMENTAL TREES</b>			
Amur Maple	Acer ginnala	1 1/2" cal.	1
Aspen	Populus tremuloides	1 1/2" cal.	27
Radiant Crab	Malus sp.	1 1/2" cal.	3
European Olive	Elaeagnus angustifolia	1 1/2" cal.	7
Shubert Chokeberry	Prunus virginiana melanocarpa "Shubert"	1 1/2" cal.	7
Spring Snow Crab	Malus sp.	1 1/2" cal.	8
Vanguard Crab	Malus sp.	1 1/2" cal.	1
<b>DECIDUOUS SHRUBS</b>			
Blue Stem Willow	Salix irrorata	5 gal.	20
Cutleaf Sumac	Rhus typhina laciniata	5 gal.	11
Golden Spicebush	Physocarpus opulifolius aureus	5 gal.	16
Redwing Dogwood	Cornus stolonifera coloradensis	5 gal.	1

Japanese Barberry	Japanese Barberry	5 gal.	11
Japanese Barberry	Japanese Barberry	5 gal.	11
Japanese Barberry	Japanese Barberry	5 gal.	11
Japanese Barberry	Japanese Barberry	5 gal.	11
Japanese Barberry	Japanese Barberry	5 gal.	11
Japanese Barberry	Japanese Barberry	5 gal.	11
Japanese Barberry	Japanese Barberry	5 gal.	11
Japanese Barberry	Japanese Barberry	5 gal.	11
Japanese Barberry	Japanese Barberry	5 gal.	11
Japanese Barberry	Japanese Barberry	5 gal.	11

## RESEARCH PLAZA

23 APR '84 SCALE 1"=20'-0"  
 MICHAEL S. BELLO  
 LANDSCAPE ARCHITECT  
 623-7031

ADMIN. AMEND. 6-11-85  
 DELETE WALK

SHEET L3

## RESEARCH PLAZA

SOUTH ABILENE STREET AND EAST FLORIDA AVENUE  
 AURORA, COLORADO

4-11-84 AS SHOWN  
 4-25-84 AS SHOWN

4-11-84 AS SHOWN  
 4-25-84 AS SHOWN

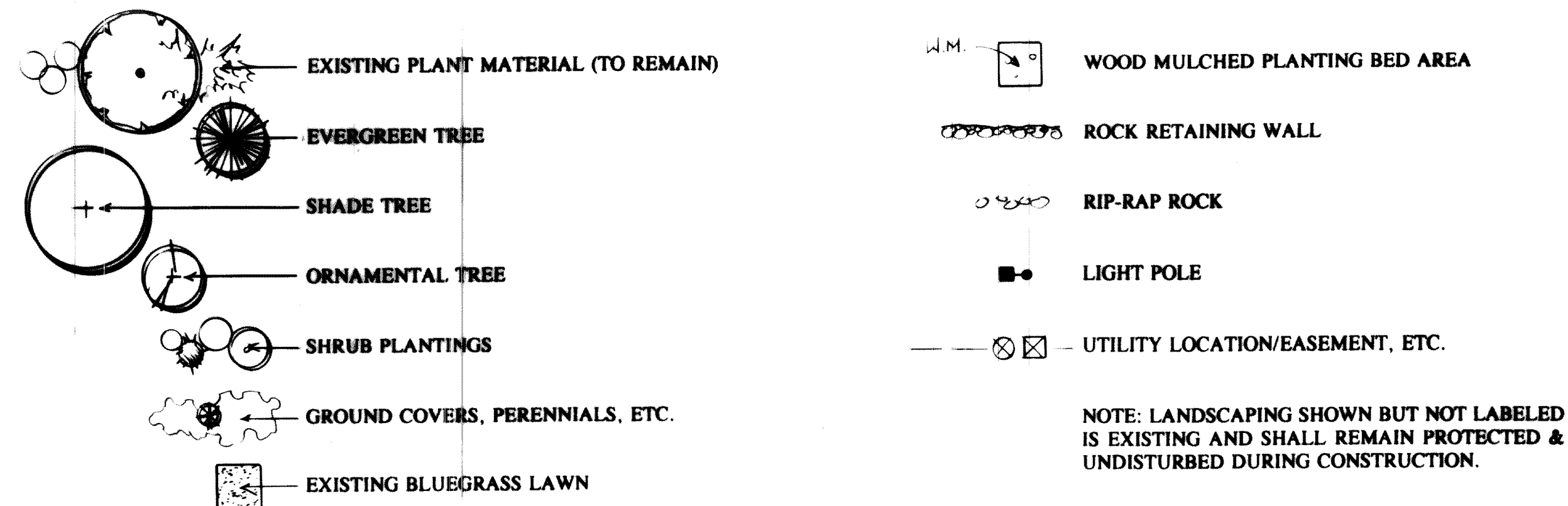
LANDSCAPE PLAN

1-1-84

24-6015104 L13

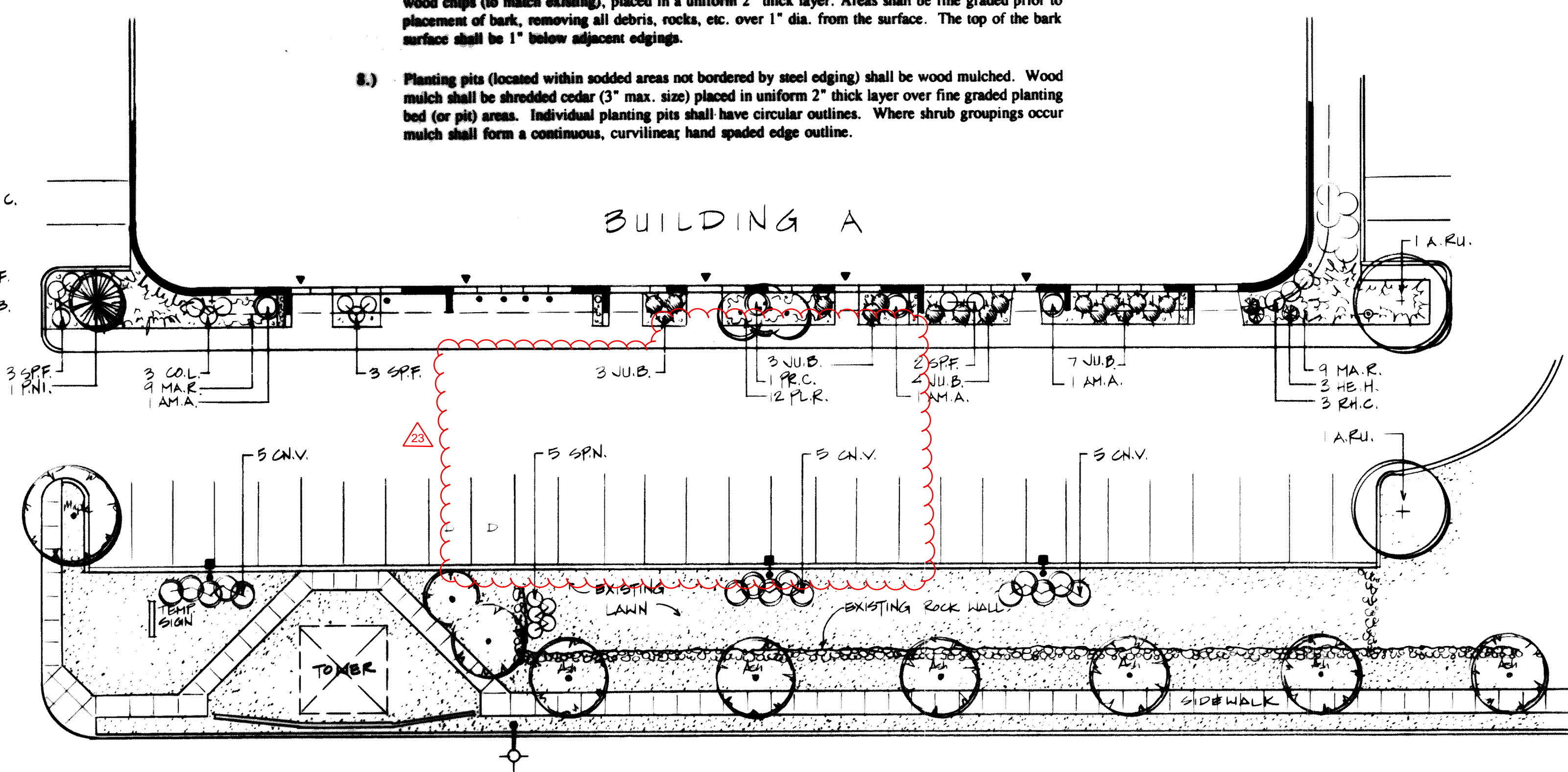
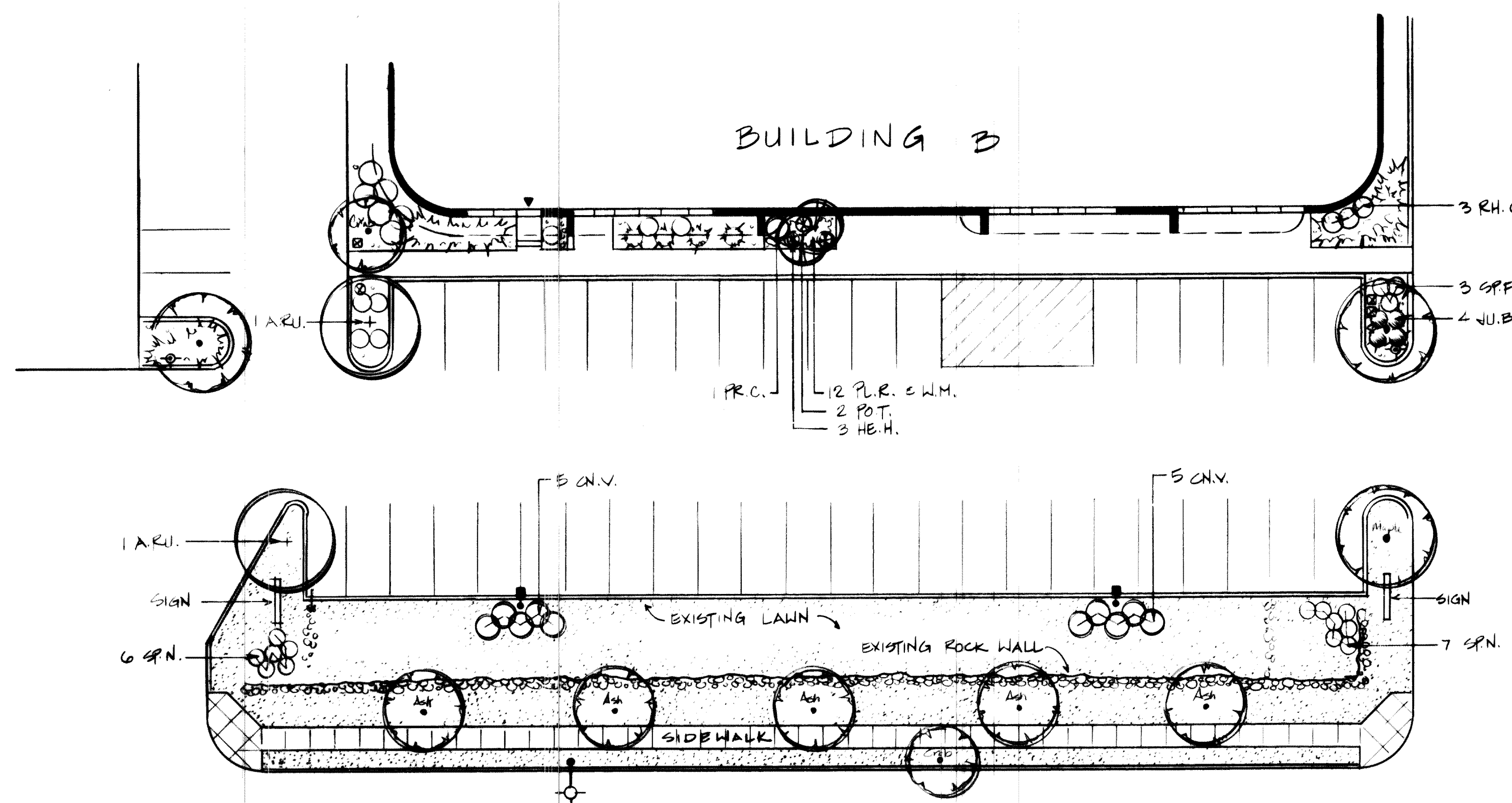


## LEGEND



## LANDSCAPE SPECIFICATIONS

- Plant material quality shall comply w/current American Association of Nurserymen (A.A.N.) standards for #1 grade nursery stock. Plants shall meet or exceed specified sizes. Trees shall have well branched tops w/reasonably straight, well developed single leaders (unless otherwise noted). Landscape architect reserves the right to reject plants of inferior quality.
- Planting pits shall be dug w/twice the diameter of the plant root ball. They shall be dug 1/4 deeper than the root ball of the plant. Planting pits shall be backfilled w/uniform mixture of 75% excavated soil & 25% "EKO" compost (or approved equal). Prior to backfilling planting pits, contractor shall remove wire baskets, container material, roping, etc. from root ball & trunks of plants. Contractor shall remove burlap & protective material from tops of root balls. Prior to final work acceptance, contractor shall remove flags & tags from plants.
- Plants shall be fertilized at the time of planting w/21 gram "AGRIFORM" slow release fertilizer tablets 20-10-5 (or approved equal) according to quantities listed in the "PLANT LIST". Tablets shall be placed in planting pit below grade during backfilling according to mfr. specs.
- Trees shall be staked & guyed to the extent necessary to keep them in a plumb position until the tree is established. Trees shall be staked w/2"x2"x6' wood stakes (or approved equal). Trees over 2" cal. shall be securely guyed w/guy wires (min. 1/8" spaced equally around the tree, w/30" wood or steel anchor stakes. Stakes shall be set in undisturbed soil @ slight angle facing away from tree trunk. Trunks shall be secured w/#12 gauge galv. steel wire & nylon strap w/grommets (or approved equal). Contractor shall be responsible for guy wire adjustments during the guarantee period, and removal of stakes & wires upon completion of the guarantee period.
- Trunks of fall planted deciduous trees over 2" cal. shall be wrapped w/an approved tree wrap spirally from ground to height of second branch. Wrapping shall be secured to trunk in an acceptable manner. Contractor shall be responsible for adjustments to wrapping during the guarantee period, and shall remove wrapping upon completion of guarantee.
- Plant material shall be fully (100%) guaranteed for a period of ONE (1) year from date of work acceptance. Replaced plant material shall be fully (100%) guaranteed for a period of one (1) year from date of replacement. During the guarantee period, contractor shall notify the owner in writing of maintenance deficiencies.
- All continuous planting bed areas shall be wood mulched. Wood mulch shall be 1" (medium) sized wood chips (to match existing), placed in a uniform 2" thick layer. Areas shall be fine graded prior to placement of bark, removing all debris, rocks, etc. over 1" dia. from the surface. The top of the bark surface shall be 1" below adjacent edgings.
- Planting pits (located within sodded areas not bordered by steel edging) shall be wood mulched. Wood mulch shall be shredded cedar (3" max. size) placed in uniform 2" thick layer over fine graded planting bed (or pit) areas. Individual planting pits shall have circular outlines. Where shrub groupings occur mulch shall form a continuous, curvilinear, hand spaded edge outline.



S. ABILENE ST.

## PLANT LIST

Key	Quantity	Plant Name	Size & Remarks	Fert.Tab.
<b>Trees:</b>				
A.R.U.	4	Acer Rubrum 'Red Sunset' - Red Sunset Maple	2.5" Cal.; B&B	5
P.N.I.	1	Pinus Nigra - Austrian Pine	8' Ht.; B&B	8
P.O.T.	2	Populus Tremuloides - Quaking Aspen	1.5" Cal./8' Ht.; B&B	3
<b>Shrubs:</b>				
A.M.A.	3	Amelanchier Alnifolia - Serviceberry	#5 Cont.; 2'-3' Ht.	3
C.N.V.	25	Cornus Alba 'A.M.' - Variegated Dogwood	#5 Cont.; 18"-24" Ht.	3
C.O.L.	3	Cotoneaster Lucidus - Hedge Cotoneaster	#5 Cont.; 18"-24" Ht.	3
J.U.B.	21	Juniperus Sabina 'Buff.' - Buffalo Juniper	#5 Cont.; 18"-24" Spr.	3
P.R.C.	2	Prunus Cistena - Purpleleaf Plum	#5 Cont.; 2'-3' Ht.	3
R.H.C.	6	Rhamnus Fran. 'Cal.' - Tallowhedge Buckthorn	#5 Cont.; 3'-4' Ht.	3
S.P.F.	11	Spiraea Bumalda 'Froebel' - Froebel Spirea	#5 Cont.; 18"-24" Ht.	3
S.P.N.	18	Spiraea Nipponensis - Snowmound Spirea	#5 Cont.; 18"-24" Ht.	3
<b>Ground Covers, Perennials, Vines, etc.:</b>				
H.E.H.	6	Hemerocallis Hyb. 'Hyperion' - Yellow Daylily	#1 Cont.; 6"-12" Ht.	-
M.A.R.	18	Mahonia Repens - Creeping Oregon Grape	#1 Cont.; 6"-12" Ht.	1
P.L.R.	24	Polygonum Reynouaria - Fleecetree	#1 Cont.; 6"-12" Ht.	-

## GENERAL NOTES

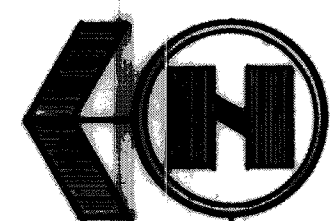
- The developer, his successor, or assignee shall be responsible for establishing & continuing a regular program of maintenance for landscaped areas.
- Contractor shall underground drip irrigation to all proposed plantings. Proposed system shall tie into existing sprinkler system as necessary. Contractor shall submit a shop drawing of proposed system for approval prior to installation.
- If the contractor wishes to use equivalent materials other than those specified, he must first receive written approval from the architect prior to bidding.
- Contractor shall be responsible for field verifying dimensions, grades, existing site conditions, etc. prior to bidding. Plan discrepancies shall be brought to the attention of the architect.
- Contractor shall be responsible for furnishing materials, labor, equipment, & services (incl. permits, taxes, etc.) necessary & reasonably incidental to carry out specified work.
- Contractor shall be responsible for the repair or replacement of existing site elements (incl. landscaping & irrigation) damaged during the construction process, but not noted for demolition or removal.

REVISED LANDSCAPE PLAN  
FOR  
PACIFICA ARKA  
I-225 PLAZA  
S. ABILENE ST. & S. FLORIDA AVE.  
AURORA, COLORADO

MICHAEL L. STAHL, INC. LANDSCAPE ARCHITECT  
8700 E. UNION AVENUE • DENVER, COLORADO 80237 • PH. 778-0801  
DATE: 3-6-95 PROJ. No.: P-9506

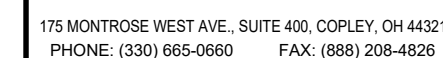
RESEARCH PLAZA

84-6018-1 + OF 4 4/5



SCALE: 1" = 20'-0"





No.	Revisions/Submissions	Date
	SHEET ADDED TO SET	01.07.20

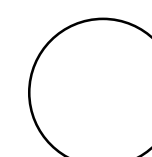
1640 S. ABILENE STREET - UNIT D  
AURORA, CO 80012

Project No.	
Scale	
Drawn	
Checked	
Date	01.07.20
Issue	
Drawing Title	

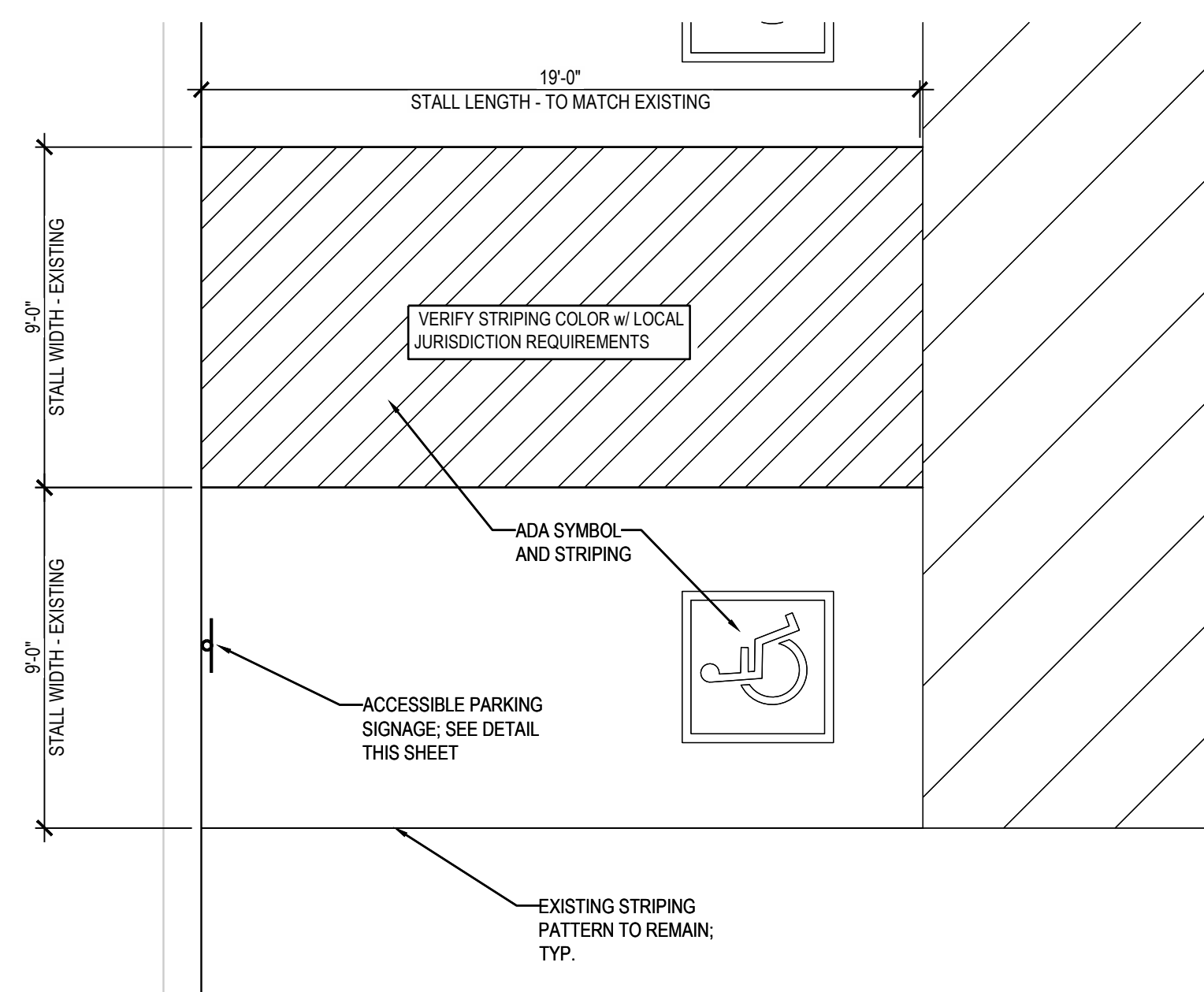
## SITE PLAN DETAILS

Drawing No.

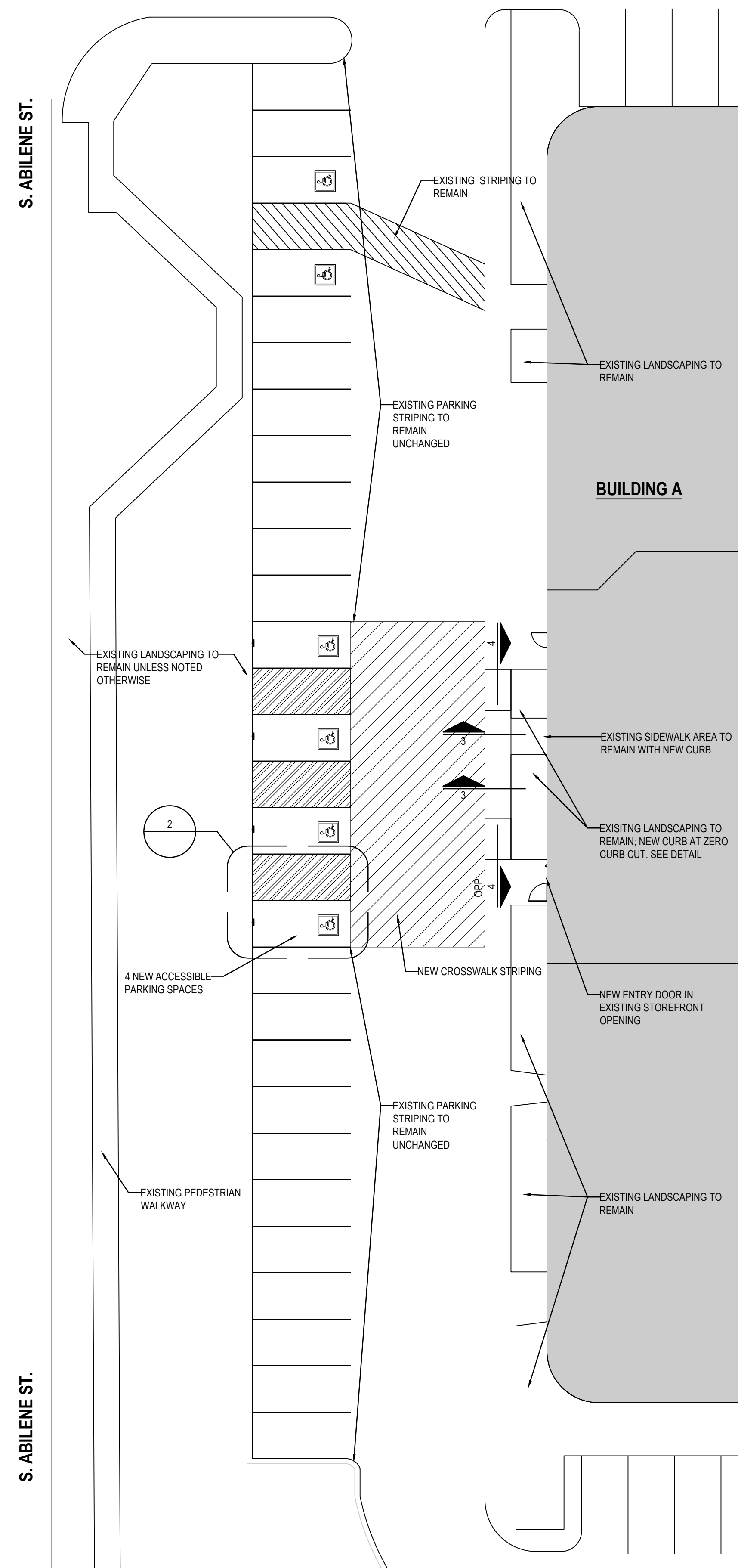
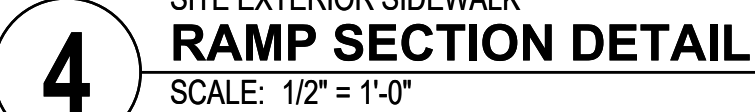
SP-2



SCALE: N.T.S.



SCALE: 1/4" = 1'-0"



SCALE: 1/16" = 1'-0"

