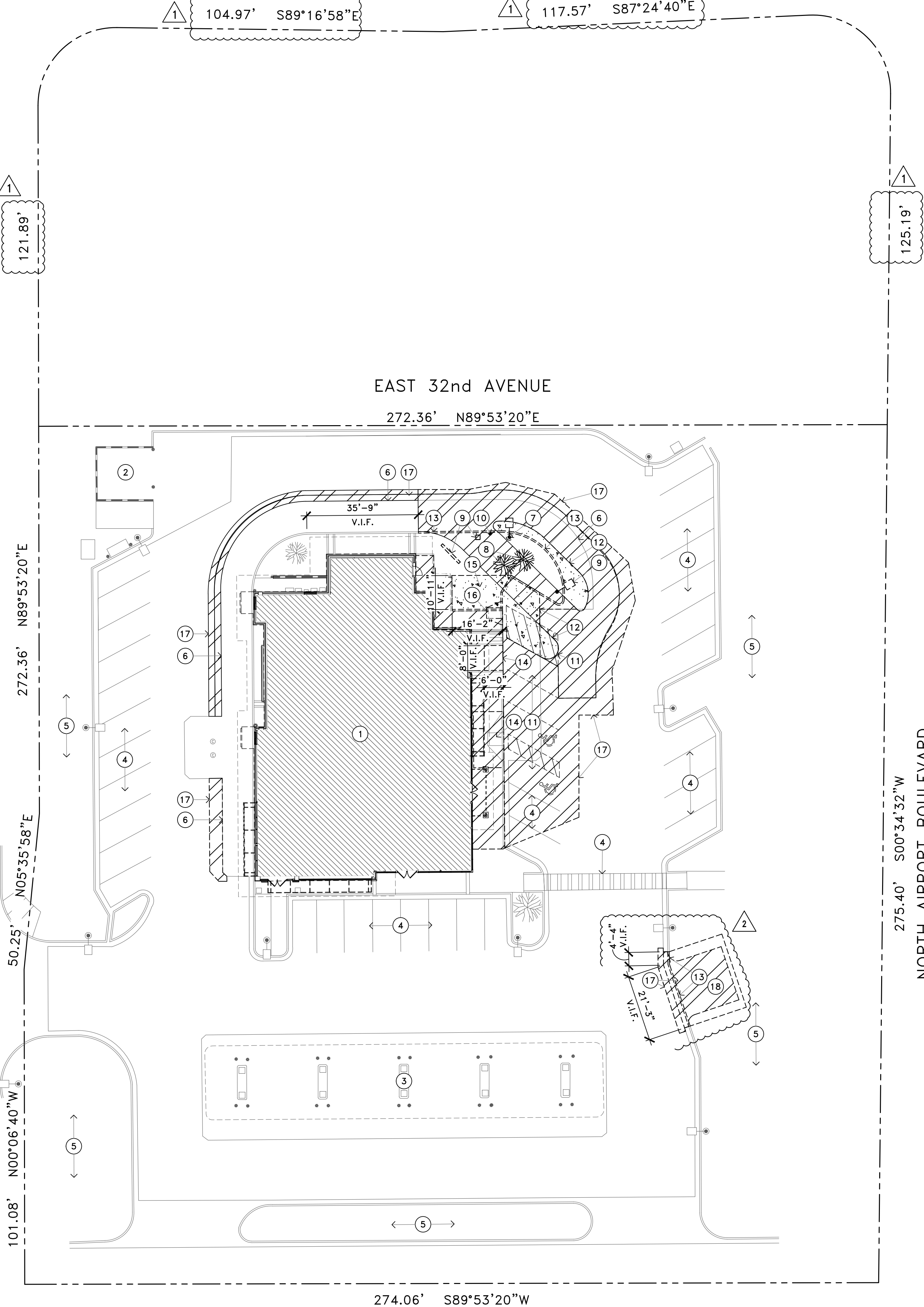


EAST AIRPORT CIRCUIT

101.08' N00°06'40"W 50.25' N05°35'58"E 272.36' N89°53'20"E



## KEYED NOTES

1. EXISTING McDONALD'S BUILDING.
2. EXISTING TRASH ENCLOSURE TO REMAIN.
3. EXISTING FUEL CANOPY AND PUMPS TO REMAIN.
4. EXISTING PARKING STRIPES TO BE REPAINTED WHITE, 4" WIDE.
5. EXISTING LANDSCAPING TO REMAIN.
6. EXISTING CONCRETE SLAB TO REMAIN.
7. EXISTING AREA LIGHT TO BE REMOVED AND RELOCATED. SEE SHEET SP.1.
8. EXISTING TREES TO BE REMOVED.
9. EXISTING C.O.D., MENU BOARD AND CLEARANCE BAR TO BE REMOVED.
10. EXISTING PIPE BOLLARD TO BE REMOVED. SEE DETAIL 4 SD.1.
11. EXISTING STRIPING / ACCESSIBLE SYMBOL TO BE REMOVED AND REPAINTED.
12. EXISTING PORTION OF CONCRETE / ASPHALT TO BE REMOVED AS REQUIRED.
13. EXISTING CURB TO BE REMOVED AS REQUIRED.
14. PORTION OF EXISTING SIDEWALK TO BE REMOVED AS REQUIRED FOR NEW A.D.A. COMPLIANT RAMP. SEE CIVIL DRAWINGS.
15. PORTION OF EXISTING SIDEWALK TO BE REMOVED AS REQUIRED FOR NEW ODMB (OUTDOOR DIGITAL MENU BOARD).
16. EXISTING RAMP TO BE REMOVED. SEE SHEET SP.1 AND CIVIL DRAWINGS.
17. EXISTING PORTION OF CONCRETE / ASPHALT TO BE REMOVED AS REQUIRED FOR NEW ISLAND AND CONCRETE FOR DRIVE THRU.
18. REMOVE EXISTING LANDSCAPING AS REQUIRED FOR NEW PARKING.

## GENERAL NOTES

- A. DIMENSIONS AND RADII SHOWN ARE TO FLOWLINE UNLESS NOTED OTHERWISE.
- B. ALL CURBS ARE 6" AND SHALL BE POURED MONOLITHICALLY WITH CONCRETE PAVEMENT.
- C. VERIFY IN FIELD ALL LOCATIONS AND DIMENSIONS AND RESOLVE ANY DISCREPANCIES WITH McDONALD'S PROJECT MANAGER PRIOR TO COMMENCING WORK.
- D. COORDINATE ALL DRIVE-THRU STRIPING AND MARKINGS WITH McDONALD'S PROJECT MANAGER.
- E. CONCRETE SHALL BE 6" MINIMUM THICKNESS AND 4000 PSI STRENGTH AT 28 DAYS. PROVIDE #4 REINFORCEMENT AT 12" O.C. AND SAWCUT JOINTS IN CONCRETE PAVEMENT IN ACCORDANCE WITH ACI STANDARDS.
- F. COORDINATE GROUND COVER OF NEW ISLANDS WITH McDONALD'S PROJECT MANAGER.
- G. ALL SITE WORK INCLUDING BUT NOT LIMITED TO ASPHALT OVERLAY, SUBGRADE PREPARATION AND CAST-IN-PLACE CONCRETE SHALL BE IN ACCORDANCE WITH McDONALD'S CONSTRUCTION SPECIFICATIONS.
- H. MAINTAIN EXISTING DRAINAGE PATTERNS WITH NEW CONSTRUCTION.

BY	DESCRIPTION	DATE	REV
BG	CITY COMMENTS	08-24-17	1
BG	OWNER REVISIONS	08-28-17	2
BG	GATEWAY COMMITTEE REVIEW	08-17-17	3

Professional of Record:



76 EAST MITCHELL DRIVE,  
PHOENIX, AZ 85012  
PHONE (602) 457-5706  
HEMANT MOOL, ARCHITECT  
hmool@pmdginc.com  
BRANDON GAGLE, PROJECT MANAGER  
bgagle@pmdginc.com

ROY PEDRO, ARCHITECT  
KEN MCCrackEN, ARCHITECT  
JESSE MACIAS, VICE PRESIDENT

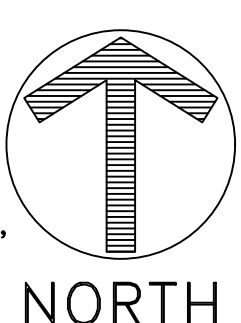
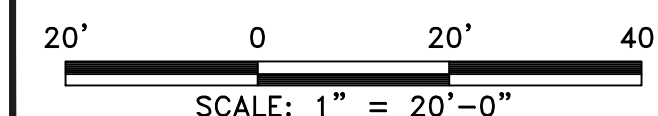


PREPARED FOR: McDonald's USA, LLC  
© 2016 McDonald's USA, LLC  
THESE DRAWINGS AND SPECIFICATIONS ARE THE CONFIDENTIAL AND PROPRIETARY INFORMATION OF McDonald's USA, LLC. NO PART OF THESE DRAWINGS OR SPECIFICATIONS SHALL BE REPRODUCED OR TRANSMITTED IN ANY FORM OR BY ANY MEANS, ELECTRONIC OR MECHANICAL, INCLUDING PHOTOCOPYING, RECORDING, OR BY ANY INFORMATION STORAGE AND RETRIEVAL SYSTEM, WITHOUT THE WRITTEN AUTHORIZATION OF McDonald's USA, LLC. THESE DRAWINGS WERE PREPARED FOR USE ON THIS SPECIFIC SITE IN CONNECTION WITH ITS ISSUE DATE AND ARE NOT TO BE USED FOR ANY OTHER PROJECT OR SITE. ANY REUSE OF THESE DRAWINGS FOR ANY OTHER PROJECT OR SITE WITHOUT THE WRITTEN AUTHORIZATION OF McDonald's USA, LLC IS STRICTLY PROHIBITED. ANY REUSE OF THESE DRAWINGS FOR ANY OTHER PROJECT OR SITE WITHOUT THE WRITTEN AUTHORIZATION OF McDonald's USA, LLC IS STRICTLY PROHIBITED. ANY REUSE OF THESE DRAWINGS FOR ANY OTHER PROJECT OR SITE WITHOUT THE WRITTEN AUTHORIZATION OF McDonald's USA, LLC IS STRICTLY PROHIBITED.

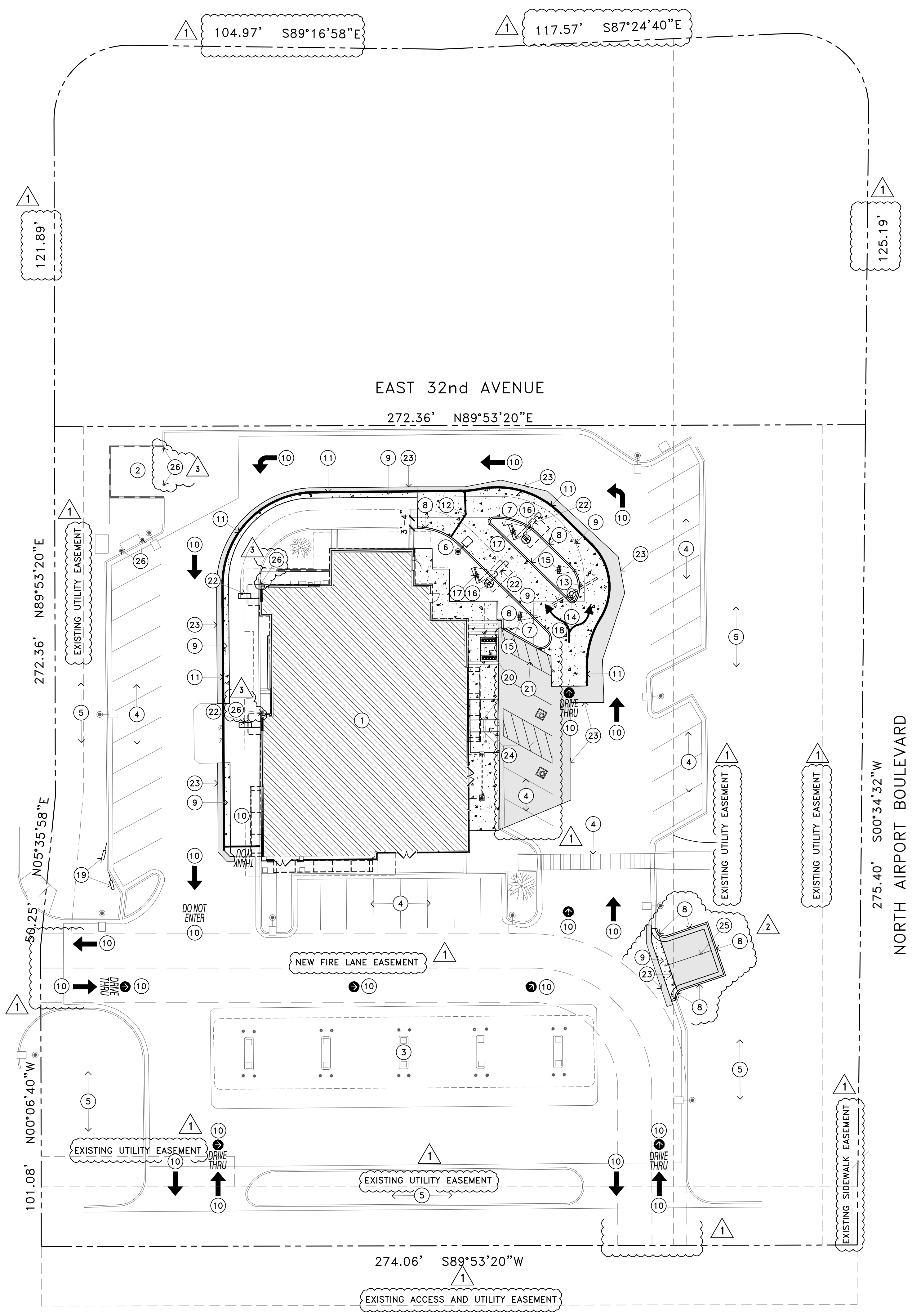
TITLE	DRAWN BY	STD	ISSUED	DATE
McDONALDS #23516 32nd AND AIRPORT	BGAGLE	08-01-17	08-01-17	08-01-17
DESCRIPTION	REVIEWED BY	DATE	ISSUED	DATE
SBS	BGAGLE	09-06-17	09-06-17	09-06-17
2nd CITY SUBMITTAL				
SITE ID	SITE ADDRESS	PROJECT#		
005-0427	3151 AIRPORT BOULEVARD, AURORA, COLORADO 80011	MCD17036.0		

DS.0  
DEMO SITE PLAN





EAST AIRPORT CIRCUIT



## KEYED NOTES

- EXISTING McDONALD'S BUILDING.
- EXISTING TRASH ENCLOSURE TO REMAIN.
- EXISTING FUEL CANOPY AND PUMPS TO REMAIN.
- EXISTING PARKING STRIPES TO BE REPAINTED WHITE, 4" WIDE.
- EXISTING LANDSCAPING TO REMAIN.
- RELOCATED AREA LIGHT - PAINTED TO MATCH RAL6012 DENVER FEDERAL GREEN WITH HIGH PRESSURE SODIUM ILLUMINATION.
- NEW LANDSCAPING TO MATCH EXISTING SITE.
- NEW 6" VERTICAL CURB REINFORCED WITH FIBERMESH. SEE DETAIL 15/SD.1.
- NEW 6" THICK CONCRETE SLAB REINFORCED WITH FIBERMESH IN NEW DRIVE-THRU LANES. MATCH EXISTING CONCRETE (TO REMAIN) ALONG JOINT LINES AS MUCH AS POSSIBLE. SEE CIVIL SHEET C2.0 AND DETAIL 19/SD.1.
- NEW STRIPING AND PAVEMENT MARKINGS TO BE INSTALLED AS SHOWN ON PLAN, USE YELLOW PAINT. SEE DETAILS 8, 12, 16 AND 20/SD.1.
- NEW 8" WIDE STRIPE PAINTED YELLOW. THIS STRIPING ALSO REPRESENTS THE LIMIT OF THE NEW CONCRETE INSTALLATION.
- NEW 6" WIDE STRIPE PAINTED YELLOW FOR MERGE POINT.
- NEW "GATEWAY" SIGN. FOOTING TO BE 18" TO 24" FROM FACE OF CURB. SEE DETAILS 2 4 AND 10/SD.2.
- NEW "ANY LANE / ANY TIME" SIGN BY OTHERS.
- NEW PRE-BROWSE BOARD BY OTHERS
- NEW COD - CUSTOMER ORDER DISPLAY BY OTHERS. SEE DETAIL 7/SD.1.
- NEW OUTDOOR DIGITAL MENU BOARD BY OTHERS. ANGLE SHOULD BE 25° TO 35° FOR MAXIMUM VISIBILITY.
- DOUBLE-HEADED ARROW PAVEMENT MARKING. STANDARD STRIPING MARKINGS ARE 7" SHAFT, 7" ARROW STEM AND 3" FOR THE ARROW HEAD. TIP OF ARROW HEAD TO BE LOCATED AT CENTER OF EACH LANE.
- NEW "PULL FORWARD" PARKING SIGNAGE BY OTHERS. SEE DETAIL 10/SD.1 FOR BOLLARD.
- NEW DELIVERY RAMP LOCATION WITH PLANTERS EACH SIDE. SEE CIVIL DRAWINGS.
- NEW 4" STRIPING AT 24" O.C. FOR NEW DELIVERY RAMP LOCATION. USE YELLOW PAINT.
- NEW LOOP DETECTORS. (OPTIONAL)
- NEW ASPHALT PAVING. SEE CIVIL DRAWINGS.
- NEW A.D.A. COMPLIANT RAMP. SEE CIVIL DRAWINGS.
- NEW 4" STRIPING. USE WHITE PAINT.
- PIPE BOLLARD - PAINTED TO MATCH RAL6012 DENVER FEDERAL GREEN WITH A 6" YELLOW STRIPE.

## GENERAL NOTES



- DIMENSIONS AND RADII SHOWN ARE TO FLOWLINE UNLESS NOTED OTHERWISE.
- ALL CURBS ARE 6" AND SHALL BE POURED MONOLITHICALLY WITH CONCRETE PAVEMENT.
- VERIFY IN FIELD ALL LOCATIONS AND DIMENSIONS AND RESOLVE ANY DISCREPANCIES WITH McDONALD'S PROJECT MANAGER PRIOR TO COMMENCING WORK.
- COORDINATE ALL DRIVE-THRU STRIPING AND MARKINGS WITH McDONALD'S PROJECT MANAGER.
- CONCRETE SHALL BE 6" MINIMUM THICKNESS AND 4000 PSI STRENGTH AT 28 DAYS. PROVIDE #4 REINFORCEMENT AT 12" O.C. AND SAWCUT JOINTS IN CONCRETE PAVEMENT IN ACCORDANCE WITH ACI STANDARDS.
- COORDINATE GROUND COVER OF NEW ISLANDS WITH McDONALD'S PROJECT MANAGER.
- ALL SITE WORK INCLUDING BUT NOT LIMITED TO ASPHALT OVERLAY, SUBGRADE PREPARATION AND CAST-IN-PLACE CONCRETE SHALL BE IN ACCORDANCE WITH McDONALD'S CONSTRUCTION SPECIFICATIONS.
- MAINTAIN EXISTING DRAINAGE PATTERNS WITH NEW CONSTRUCTION.

## SITE AREA

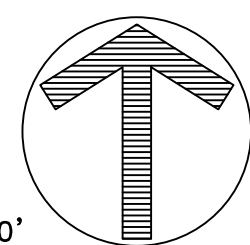
EXISTING SITE	75,179 S.F. / 1.73 ACRES
AREA OF CHANGE	6,097 S.F.
% OF AREA CHANGED	8.11%
*AREA CHANGED INCLUDES ALL A.D.A. SITE AND SIDEWALK WORK, NEW SIDE-BY-SIDE DRIVE-THRU AND NEW DRIVE-THRU CONCRETE LANE. PARKING LOT STRIPING IS NOT INCLUDED IN THIS TOTAL.	

## PARKING

PARKING REQUIRED = 1 SPACE PER 3 SEATS	
PARKING REQUIRED = 62 SEATS / 3	21 SPACES
PARKING PROVIDED	35 SPACES
A.D.A. PARKING REQUIRED	2 SPACES
A.D.A. PARKING PROVIDED	2 SPACES
TOTAL PARKING PROVIDED	37 SPACES

BY	BG	BG	BG		
	DESCRIPTION	CITY COMMENTS	OWNER REVISIONS	GATEWAY COMMITTEE REVIEW	
	REV	DATE	REV	DATE	
	1	08-24-17	2	08-28-17	3
Professional of Record:					
					
76 EAST MITCHELL DRIVE, PHOENIX, AZ 85012 PHONE (602) 457-5706 HEMANT MOULI, ARCHITECT hemant@pmdesign.com BRANDON GAGLE, PROJECT MANAGER bgagle@pmdesign.com					
ROY PEDRO, ARCHITECT KEN MCCracken, ARCHITECT JESSE MACIAS, VICE PRESIDENT					
					
EXP. 10/31/17					
PREPARED FOR:	McDonald's USA, LLC				
THESE DRAWINGS AND SPECIFICATIONS ARE THE CONFIDENTIAL AND PROPRIETARY INFORMATION OF McDonald's USA, LLC. NO PART OF THESE DRAWINGS OR SPECIFICATIONS SHALL BE REPRODUCED, COPIED, OR TRANSMITTED IN ANY FORM OR BY ANY MEANS, ELECTRONIC OR MECHANICAL, INCLUDING PHOTOCOPYING, RECORDING, OR BY ANY INFORMATION STORAGE AND RETRIEVAL SYSTEM, WITHOUT THE WRITTEN AUTHORIZATION OF McDonald's USA, LLC. ANY SUCH REPRODUCTION OR TRANSMISSION WITHOUT THE WRITTEN AUTHORIZATION OF McDonald's USA, LLC IS STRICTLY PROHIBITED. THE CONTRACTOR SHALL BE RESPONSIBLE FOR OBTAINING ALL NECESSARY PERMITS AND LICENSES FOR THE CONSTRUCTION OF THE PROJECT. THE CONTRACTOR SHALL BE RESPONSIBLE FOR OBTAINING ALL NECESSARY PERMITS AND LICENSES FOR THE CONSTRUCTION OF THE PROJECT. THE CONTRACTOR SHALL BE RESPONSIBLE FOR OBTAINING ALL NECESSARY PERMITS AND LICENSES FOR THE CONSTRUCTION OF THE PROJECT.					
DRAWN BY	BGAGLE	STD. ISSUE DATE	08-01-17	REVIEWED BY	BGAGLE
DATE	08-01-17	DATE	08-01-17	DATE	08-01-17
PROJECT#	MCD17036.0				
TITLE	McDonald's #23516 32nd AND AIRPORT				
DESCRIPTION	2nd CITY SUBMITTAL				
SBS	09-06-17				
SITE ADDRESS	3151 AIRPORT BOULEVARD, AURORA, COLORADO 80011				
SHEET NO.	SP.1				
SITE PLAN					





- A. DIMENSIONS AND RADII SHOWN ARE TO FLOWLINE UNLESS NOTED OTHERWISE.
- B. ALL CURBS ARE 6" AND SHALL BE POURED MONOLITHICALLY WITH CONCRETE PAVEMENT.
- C. VERIFY IN FIELD ALL LOCATIONS AND DIMENSIONS AND RESOLVE ANY DISCREPANCIES WITH McDONALD'S PROJECT MANAGER PRIOR TO COMMENCING WORK.
- D. COORDINATE ALL DRIVE-THRU STRIPING AND MARKINGS WITH McDONALD'S PROJECT MANAGER.
- E. CONCRETE SHALL BE 6" MINIMUM THICKNESS AND 4000 PSI STRENGTH AT 28 DAYS. PROVIDE #4 REINFORCEMENT AT 12" O.C. AND SAWCUT JOINTS IN CONCRETE PAVEMENT IN ACCORDANCE WITH ACI STANDARDS.
- F. COORDINATE GROUND COVER OF NEW ISLANDS WITH McDONALD'S PROJECT MANAGER.
- G. ALL SITE WORK INCLUDING BUT NOT LIMITED TO ASPHALT OVERLAY, SUBGRADE PREPARATION AND CAST-IN-PLACE CONCRETE SHALL BE IN ACCORDANCE WITH McDONALD'S CONSTRUCTION SPECIFICATIONS.
- H. MAINTAIN EXISTING DRAINAGE PATTERNS WITH NEW CONSTRUCTION.

REV	DATE	DESCRIPTION	BY
1	08-24-17	CITY COMMENTS	BG
2	08-28-17	OWNER REVISIONS	BG
3	08-17-17	GATEWAY COMMITTEE REVIEW	BG



ROY PEDRO, ARCHITECT  
KEN MCCrackEN, ARCHITECT  
JESSE MACIAS, VICE PRESIDENT



PREPARED FOR:

**M. McDonald's USA, LLC**

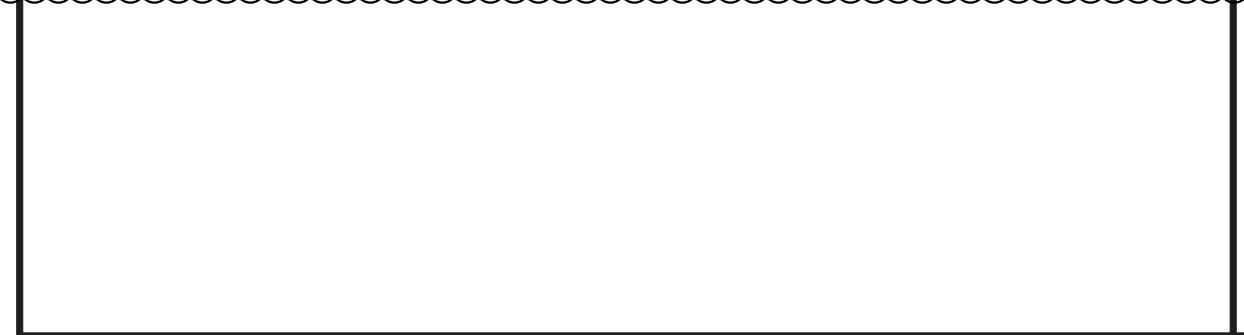
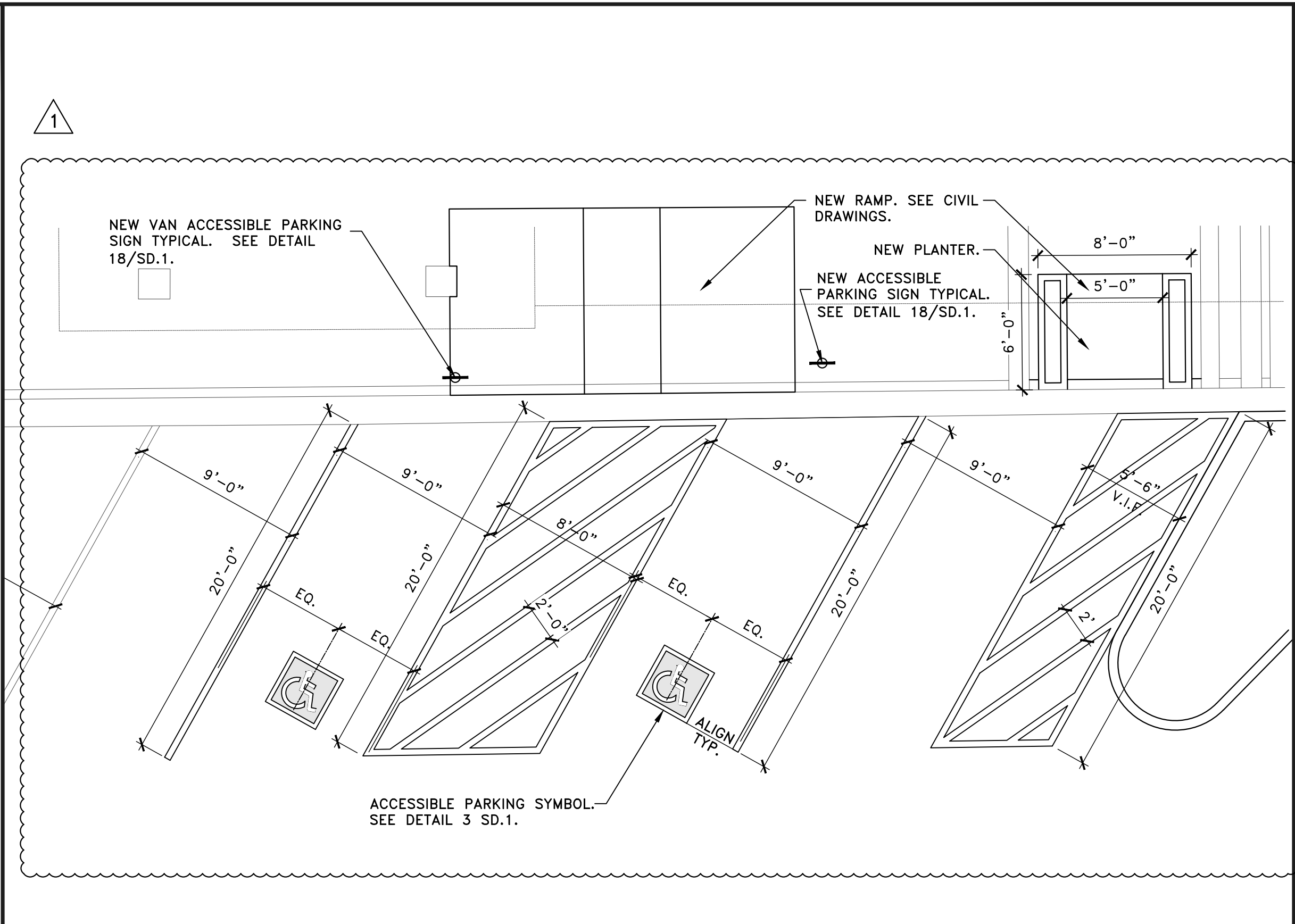
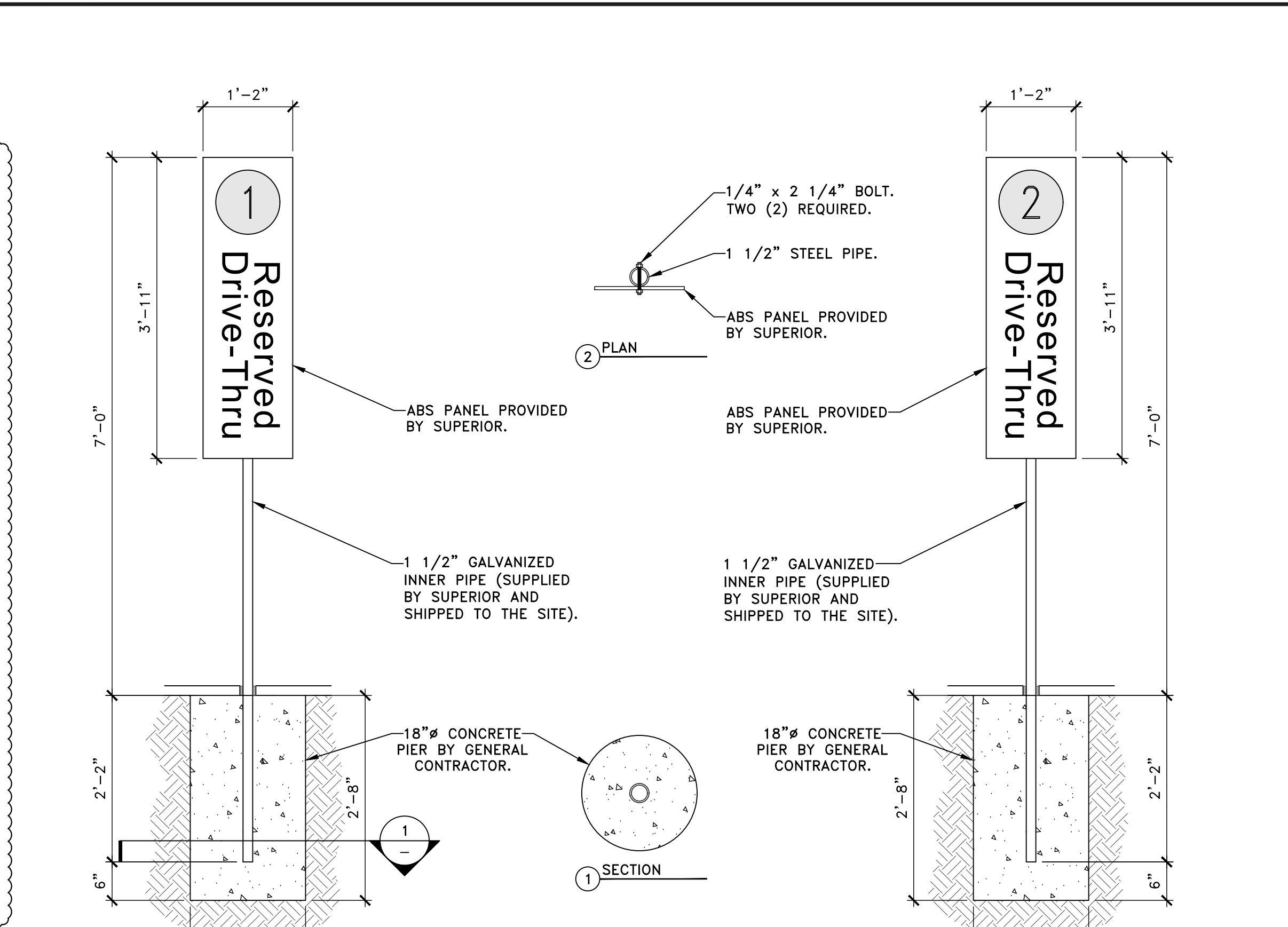
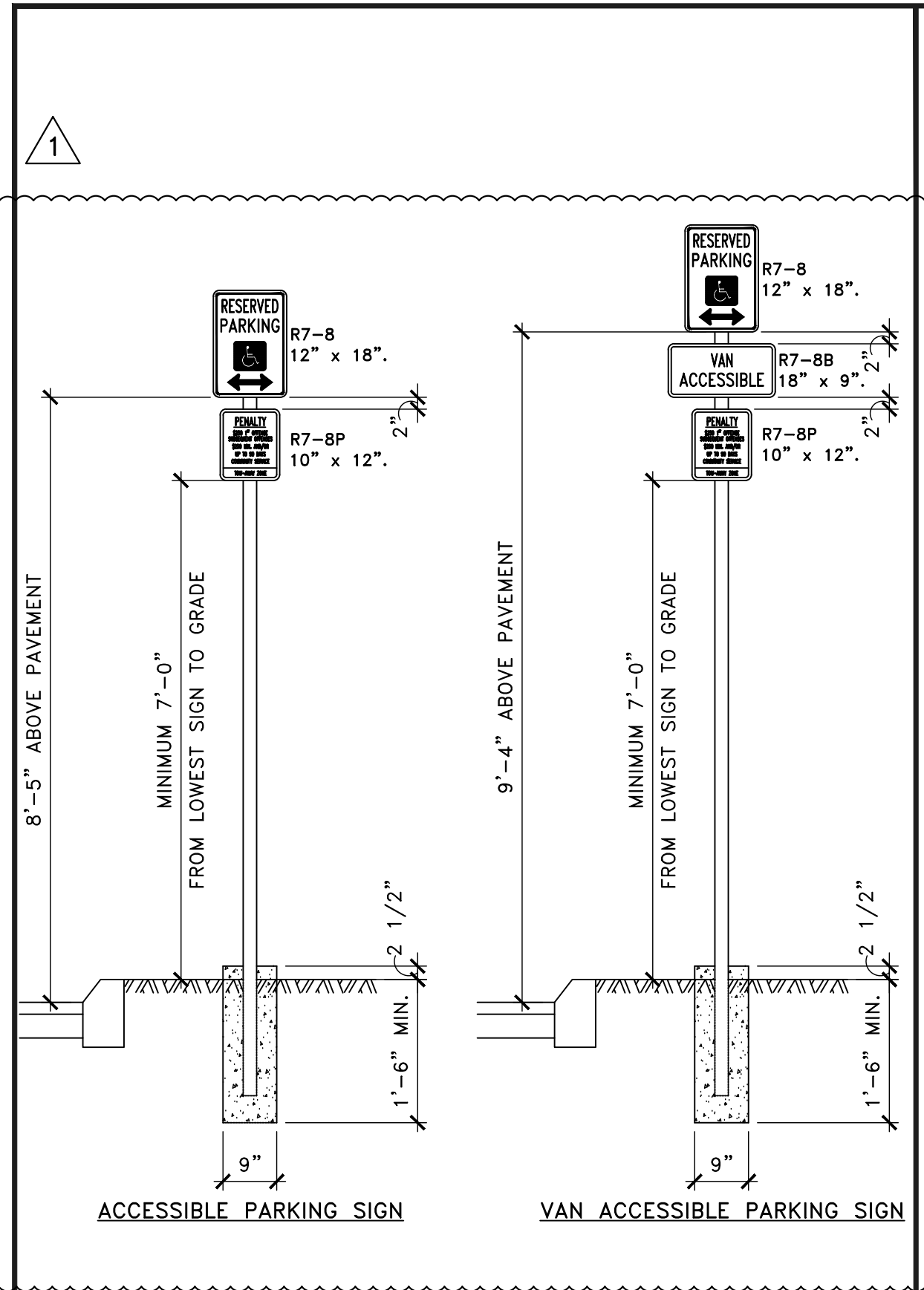
© 2016 McDonald's USA, LLC

THESE DRAWINGS AND SPECIFICATIONS ARE THE CONFIDENTIAL AND PROPRIETARY PROPERTY OF MCDONALD'S USA, LLC AND SHALL NOT BE REPRODUCED OR TRANSMITTED IN ANY FORM OR BY ANY MEANS. CONTRACT DOCUMENTS WERE PREPARED FOR USE ON THIS SPECIFIC SITE IN CONJUNCTION WITH ITS ISSUE DATE AND ARE NOT SUITABLE FOR USE ON A DIFFERENT PROJECT. ANY REUSE OF THESE CONTRACT DOCUMENTS WITHOUT THE PROPERLY LICENSED ARCHITECTS' AND ENGINEERS' REPRODUCTION OF THE CONTRACT DOCUMENTS FOR REUSE ON ANOTHER PROJECT IS NOT ALLOWED.

TITLE	McDONALDS #23516
DESCRIPTION	32nd AND AIRPORT
SBS	
2nd CITY SUBMITAL	
08-06-17	
DATE ISSUED	08-06-17
REVIEWED BY	BCAGLE
STD ISSUE DATE	08-01-17
FORWARDED BY	BCAGLE
PROJECT #	0035-4427
FILE #	3151 AIRPORT BOULEVARD, AURORA, COLORADO, 80011
CD	WCD7056.0

SHEET NO.  
SP.2  
DIMENSIONED SITE PLAN

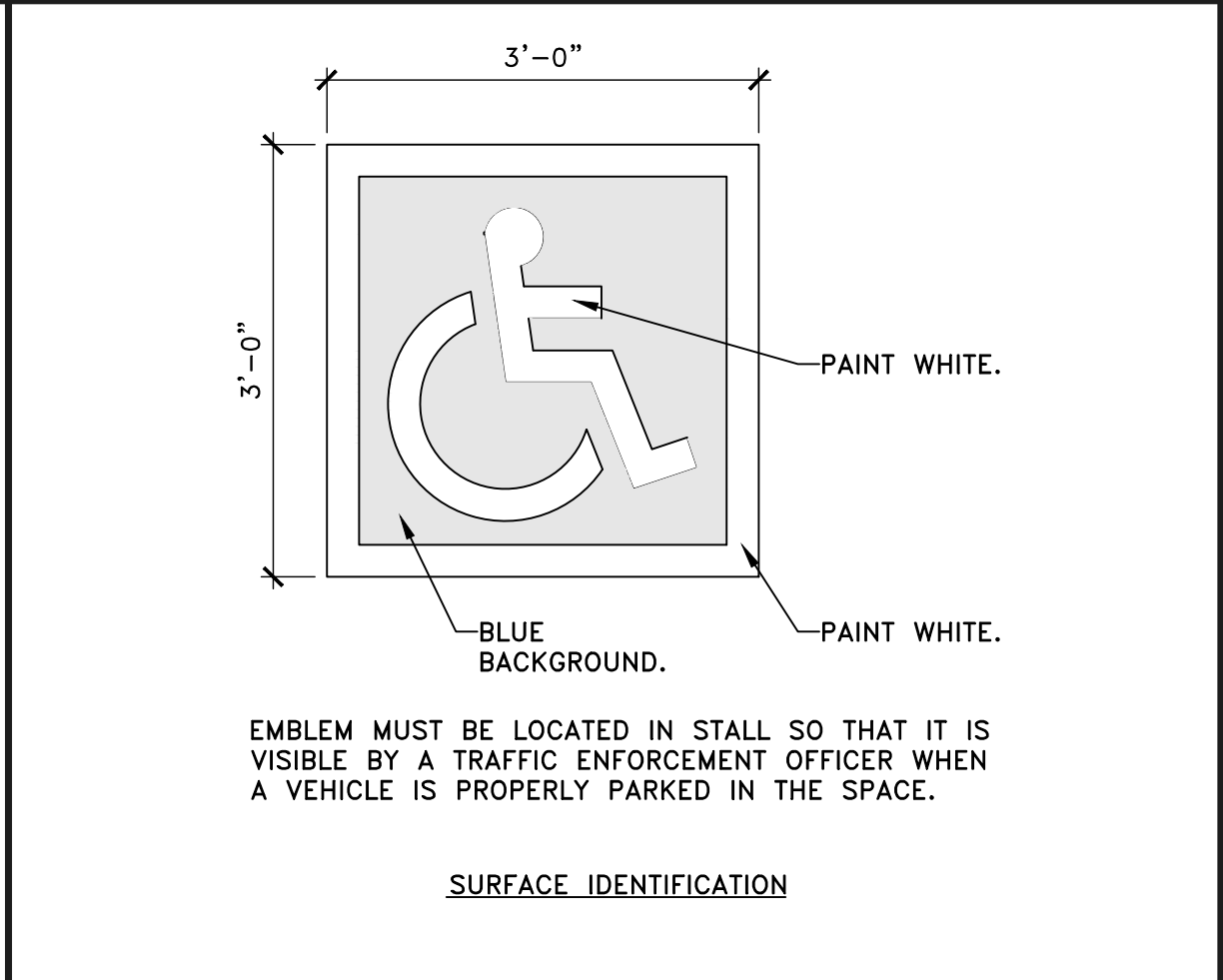
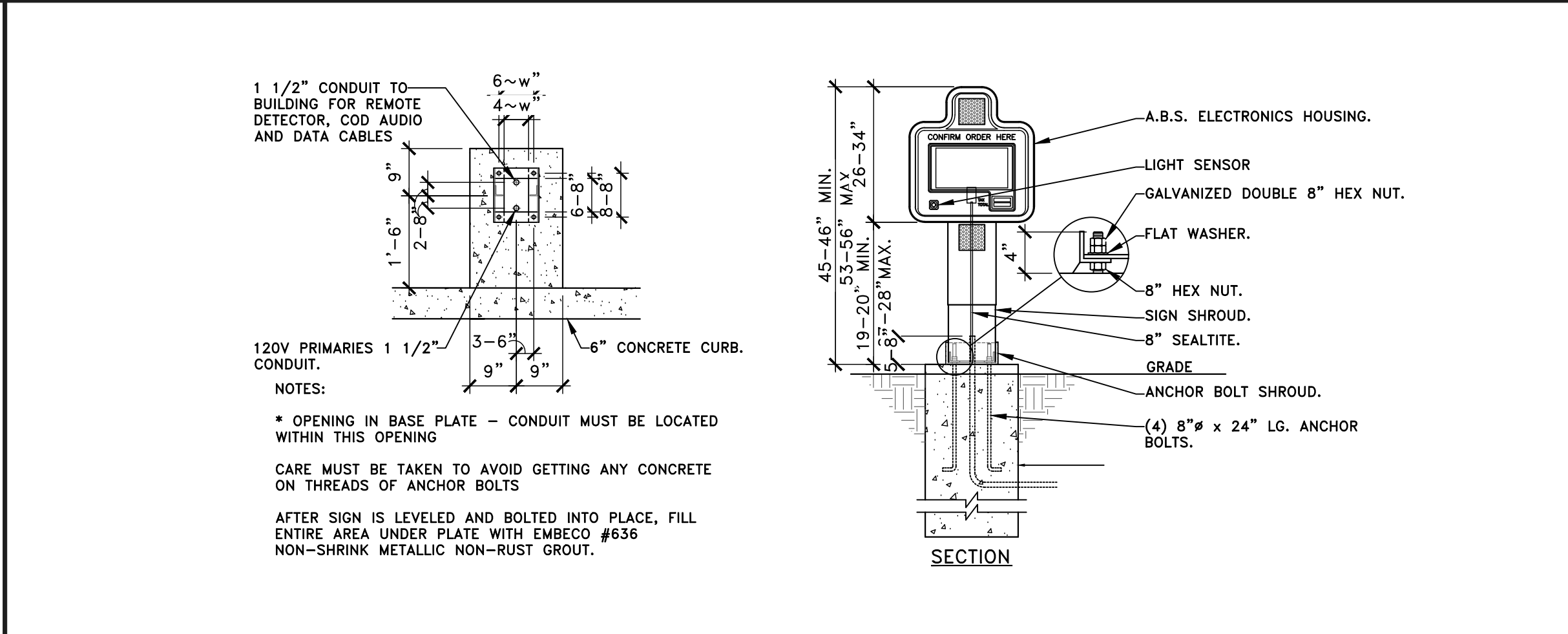
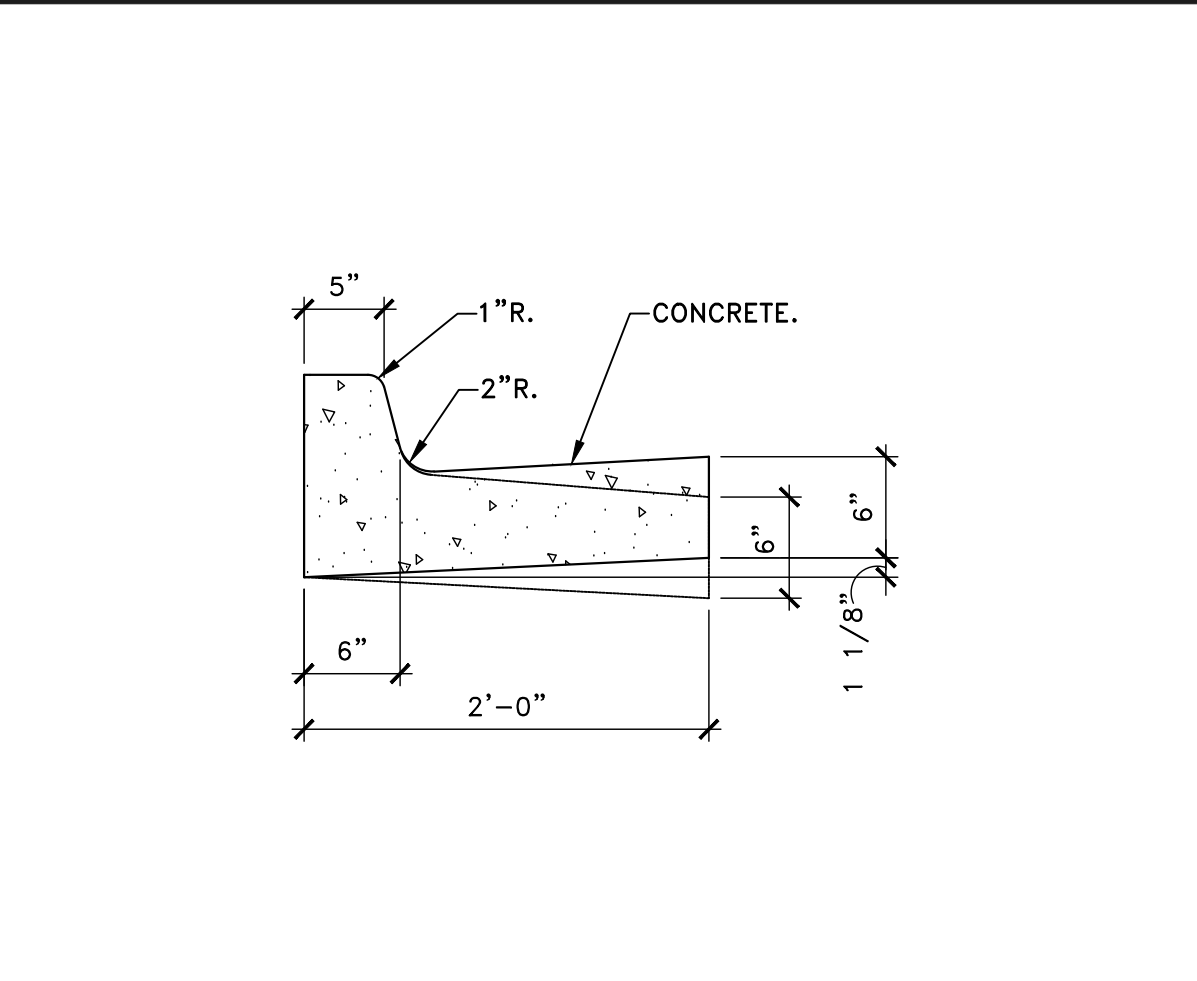
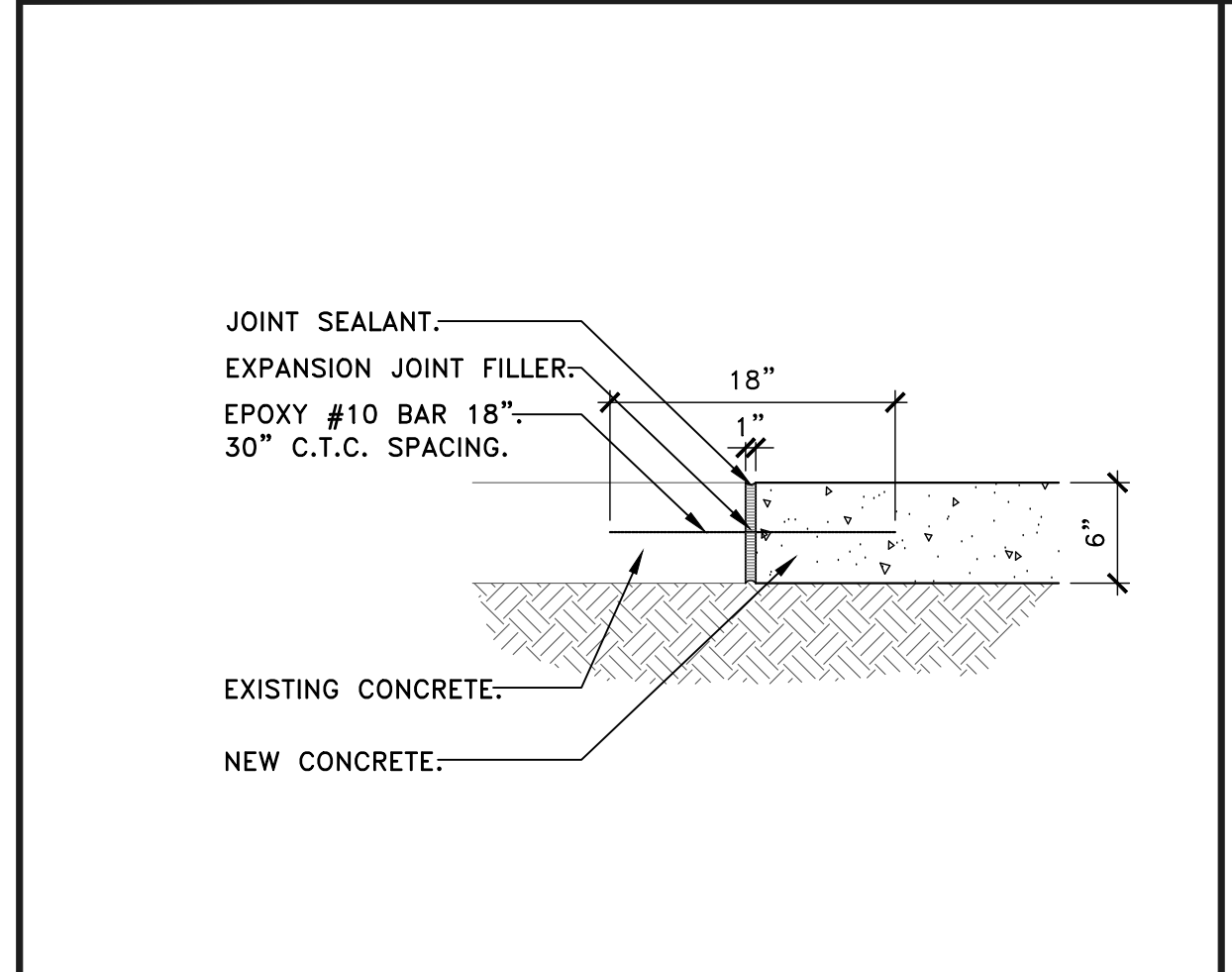




ACCESSIBLE PARKING SIGNS SCALE: 1/2"=1'-0" (18)

"PULL FORWARD" BOLLARD SCALE: 3/4"=1'-0" (10)

ACCESSIBLE PARKING SPACES AND PATH OF TRAVEL SCALE: 3/16"=1'-0" (2)

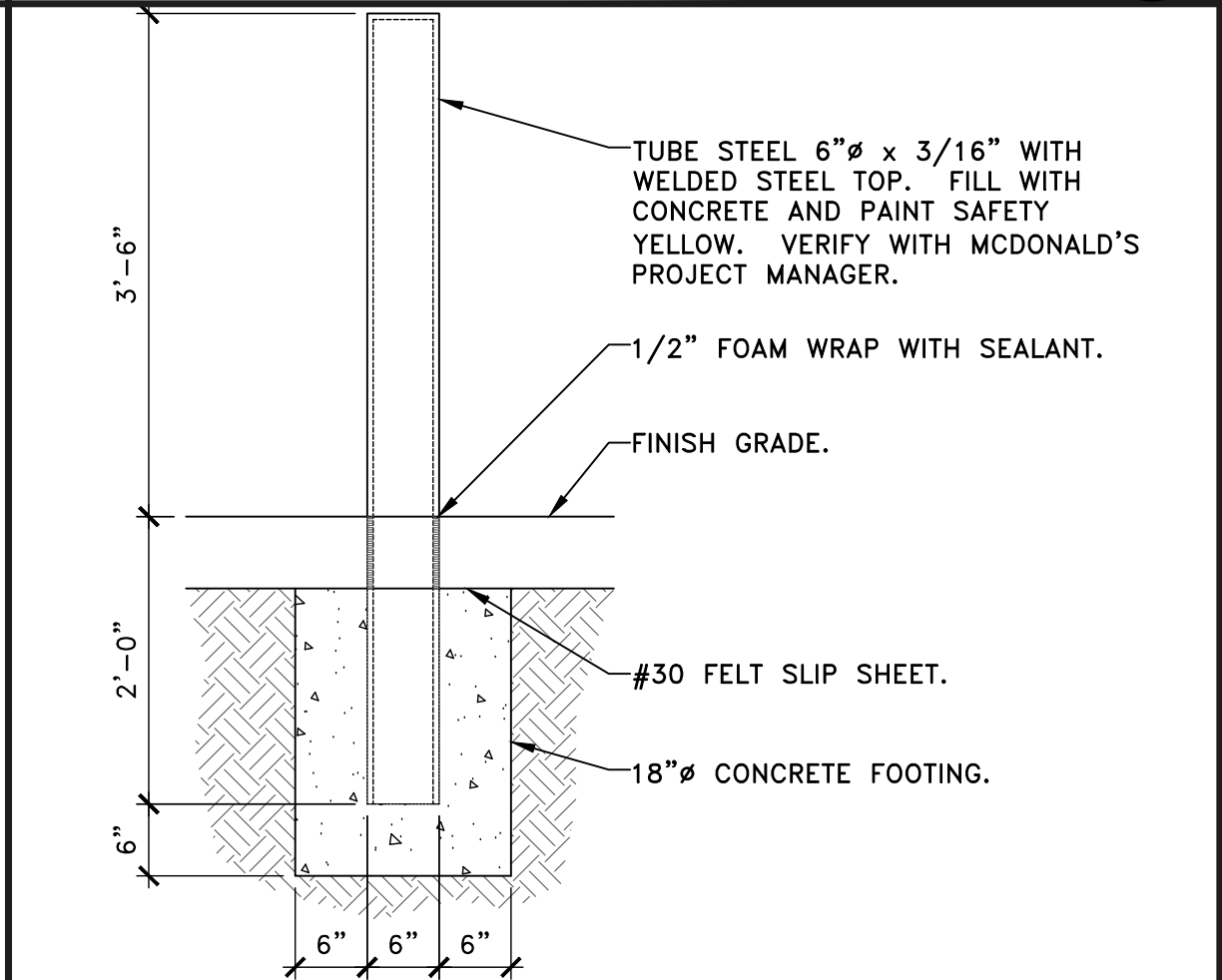
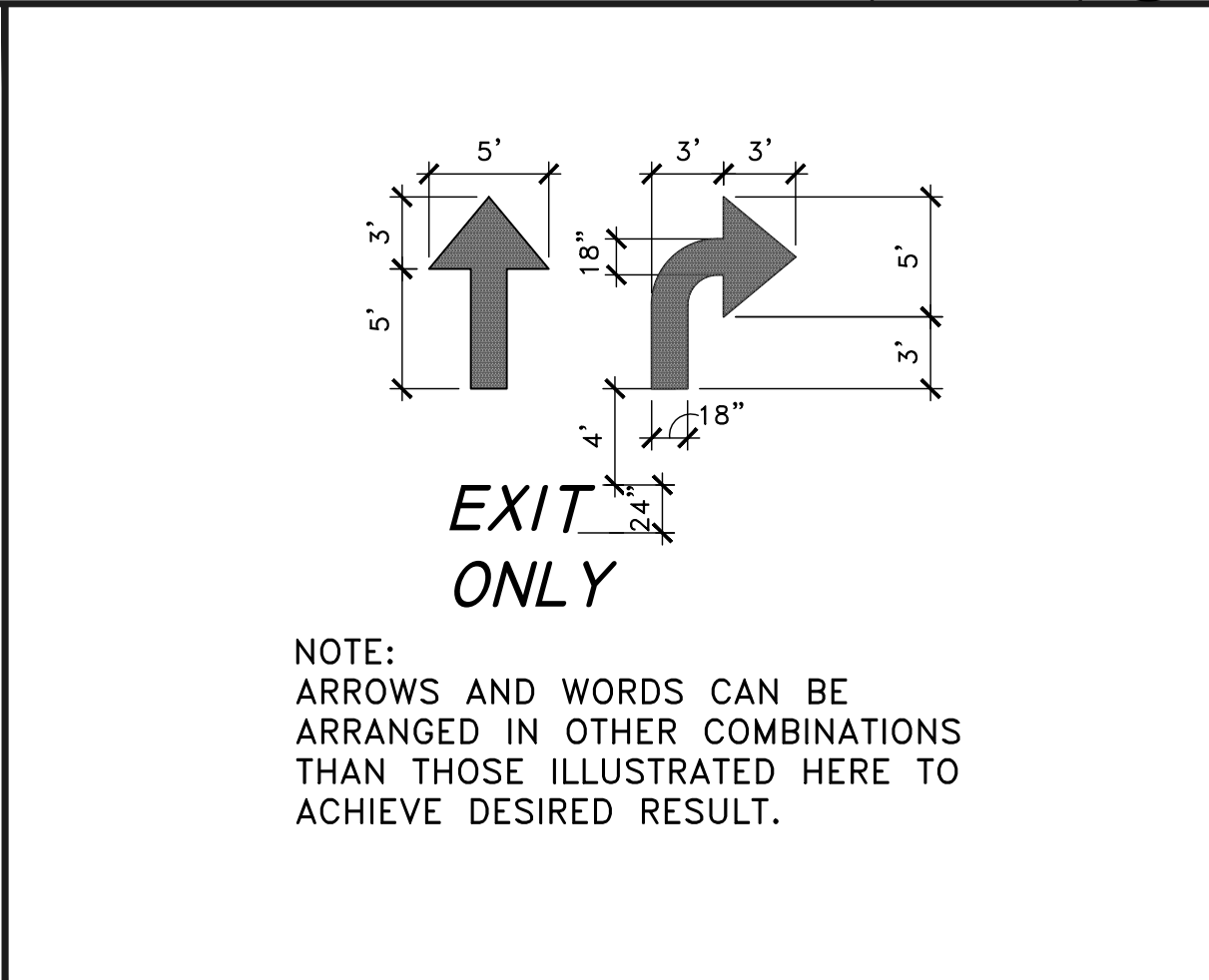
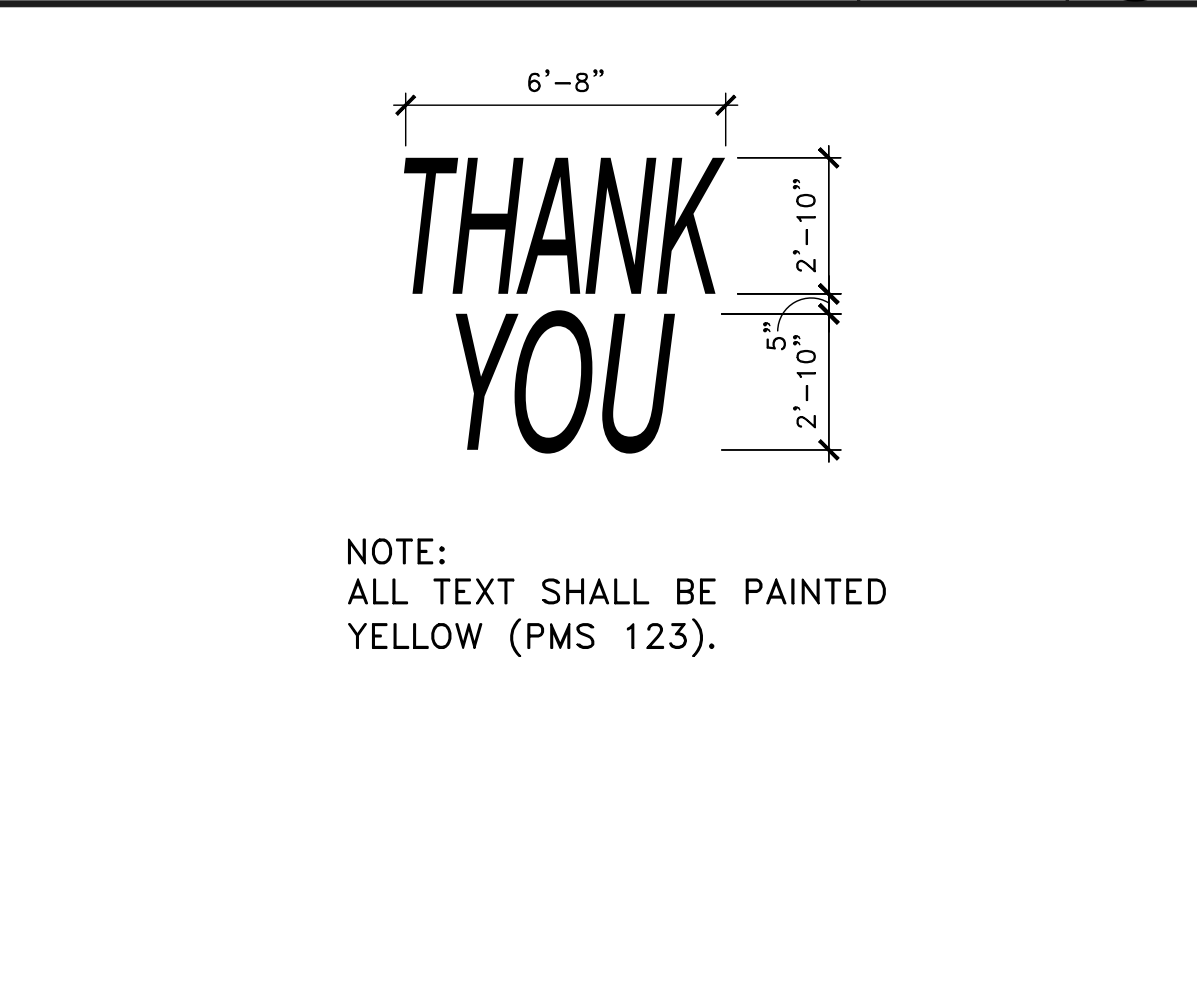
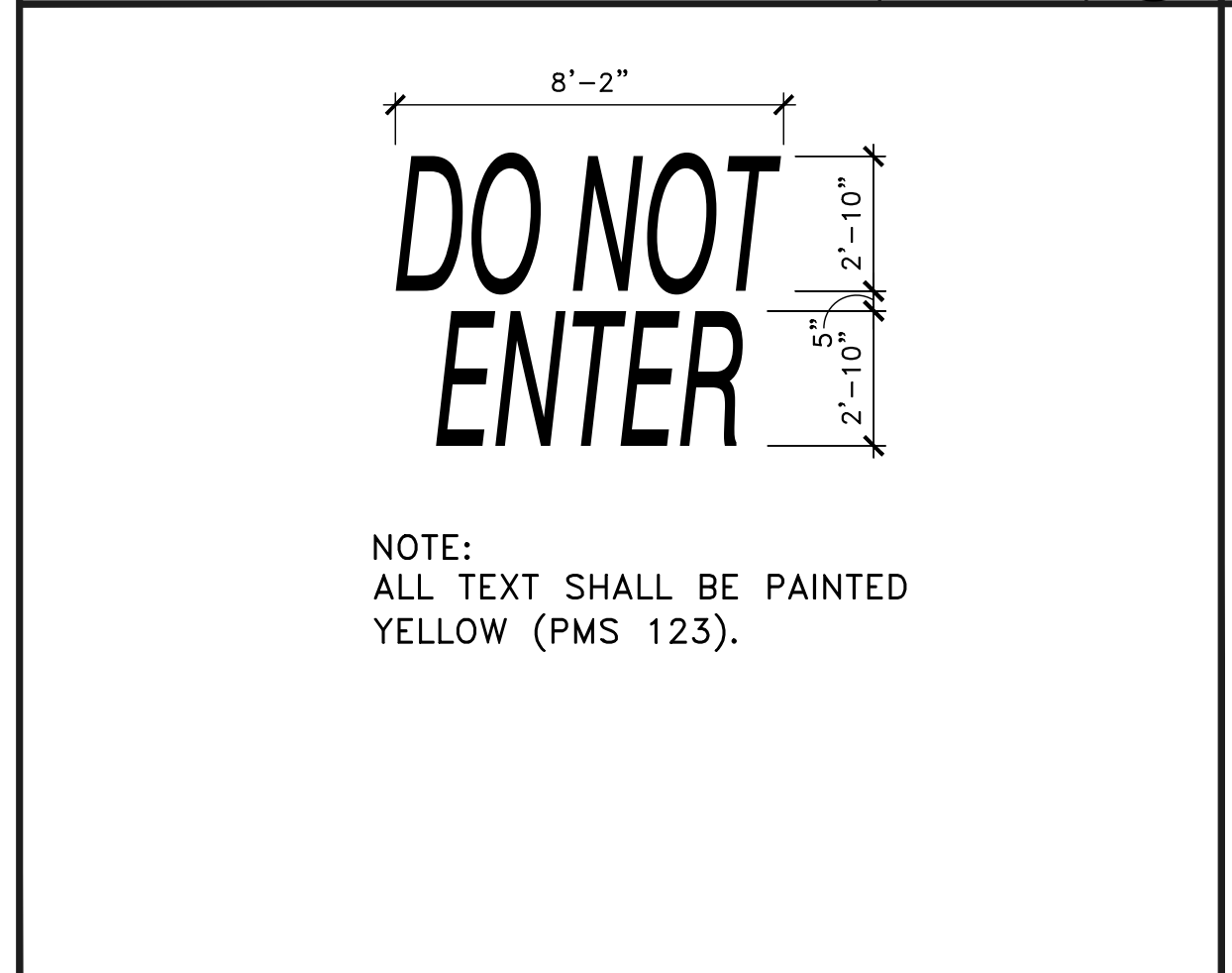


CONCRETE PAVING JOINT SCALE: 1"=1'-0" (19)

CONCRETE CURB AT GUTTER SCALE: 1"=1'-0" (15)

(C.O.D.) "CUSTOMER ORDER DISPLAY" (FOR REFERENCE) SCALE: 1/2"=1'-0" (7)

ACCESSIBLE PARKING SYMBOL SCALE: 3/4"=1'-0" (3)



"DO NOT ENTER" MARKING SCALE: 1/4"=1'-0" (20)

"THANK YOU" MARKING SCALE: 1/4"=1'-0" (16)

"DRIVE THRU" MARKING SCALE: 1/4"=1'-0" (12)

TYPICAL ARROW MARKING SCALE: 1/8"=1'-0" (8)

BOLLARD SCALE: 3/4"=1'-0" (4)

BY	DESCRIPTION	DATE	REV	DATE	Professional of Record:
BG	CITY COMMENTS	08-24-17	1	08-24-17	
BG	OWNER REVISIONS	08-28-17	2	08-28-17	
BG	GATEWAY COMMITTEE REVIEW	08-17-17	3	08-17-17	

PM  
DESIGN  
Architectural  
Solutions Group

76 EAST MITCHELL DRIVE,  
PHOENIX, AZ 85012  
PHONE (602) 457-5708  
HEMANT MOOL, ARCHITECT  
hmoool@pmdginc.com  
BRANDON GAGLE, PROJECT MANAGER  
bgagle@pmdginc.com

ROY PEDRO, ARCHITECT  
KEN MCCracken, ARCHITECT  
JESSE MACIAS, VICE PRESIDENT

COLORADO LICENSED  
HEMANT G. MOOL  
ARC.00402018  
ARCHITECT  
EXP. 10/31/17

PREPARED FOR:  
McDonald's USA, LLC

THESE DRAWINGS AND SPECIFICATIONS ARE THE CONFIDENTIAL AND PROPRIETARY INFORMATION OF McDonald's USA, LLC. NO PART OF THESE DRAWINGS OR SPECIFICATIONS SHALL BE REPRODUCED OR TRANSMITTED IN ANY FORM OR BY ANY MEANS, ELECTRONIC OR MECHANICAL, INCLUDING PHOTOCOPYING, RECORDING, OR BY ANY INFORMATION STORAGE AND RETRIEVAL SYSTEM, WITHOUT THE WRITTEN AUTHORIZATION OF McDonald's USA, LLC. THE CONTRACT DOCUMENTS WERE PREPARED FOR USE ON THIS SPECIFIC SITE. ANY REUSE OF THESE DRAWINGS OR SPECIFICATIONS FOR ANY OTHER PROJECT WITHOUT THE WRITTEN AUTHORIZATION OF McDonald's USA, LLC IS PROHIBITED. ANY REUSE OF THESE DRAWINGS OR SPECIFICATIONS FOR ANY OTHER PROJECT WITHOUT THE WRITTEN AUTHORIZATION OF McDonald's USA, LLC IS PROHIBITED. ANY REUSE OF THESE DRAWINGS OR SPECIFICATIONS FOR ANY OTHER PROJECT WITHOUT THE WRITTEN AUTHORIZATION OF McDonald's USA, LLC IS PROHIBITED.

DRAWN BY	DATE	ISSUED	DATE	PROJECT#
BGAGLE	08-01-17	BGAGLE	09-08-17	MCD17036.0

TITLE  
McDonalds #23516  
32nd AND AIRPORT

DESCRIPTION  
2nd CITY SUBMITTAL

SITE ADDRESS  
3151 AIRPORT BOULEVARD, AURORA, COLORADO, 80011

SHEET NO.  
SD.1  
SITE DETAILS







1. ALL WORK SHALL BE PER APPLICABLE FEDERAL, STATE AND LOCAL CODE REQUIREMENTS AND OSHA REQUIREMENTS.
2. THIS PLAN HAS BEEN REVIEWED BY THE GOVERNING AGENCY AND/OR ITS AUTHORIZED REPRESENTATIVE. THE CONTRACTOR SHALL BE RESPONSIBLE TO CORRECT ERRORS AND OMISSIONS OR MAKE CHANGES DUE TO CONDITIONS DISCOVERED IN THE FIELD. THE CITY AND THE CIVIL ENGINEER SHALL BE INFORMED IN WRITING OF ANY CHANGES OR CORRECTIONS MADE PRIOR TO THE EXECUTION OF SAID CHANGES.
3. ALL REVISIONS TO THESE PLANS SHALL BE REVIEWED BY THE GOVERNING AGENCIES PRIOR TO ANY CONSTRUCTION. REVISED PLANS SHALL BE STAMPED AND SIGNED BY THE CIVIL ENGINEER AND/OR THE GOVERNING AGENCY PRIOR TO ANY CONSTRUCTION.
4. CONTRACTOR SHALL AGREE TO ASSUME SOLE AND COMPLETE RESPONSIBILITY FOR THE JOB SITE DURING THE COURSE OF CONSTRUCTION OF THE PROJECT, INCLUDING SAFETY OF ALL PERSONS AND PROPERTY. THIS REQUIREMENT SHALL APPLY CONTINUOUSLY AND NOT BE LIMITED TO NORMAL WORKING HOURS. THE CONTRACTOR SHALL DEFEND, INDEMNIFY, AND HOLD HARMLESS THE OWNER, THE CITY OF AURORA, THE ENGINEER, AND THE ARCHITECT FROM ANY LIABILITY, REAL OR ALLEGED, IN CONNECTION WITH THE PERFORMANCE OF WORK ON THIS PROJECT, EXCEPT FOR LIABILITY ARISING FROM THE SOLE NEGLIGENCE OF THE OWNER, ENGINEER, OR ARCHITECT. THE ENGINEER ASSUMES NO RESPONSIBILITY EXCEPT FOR THE ADEQUACY OF THE DESIGN CONTAINED WITHIN.
5. DURING CONSTRUCTION OF THE SITE IMPROVEMENTS, THE SOIL AREAS SHALL BE WATERED IN ORDER TO MINIMIZE THE IMPACT OF DUST ON THE SURROUNDING AREAS.
6. ALL GRADING TO BE IN ACCORDANCE WITH THE U.B.C. APPENDIX CHAPTER #33.
7. CONTRACTOR IS RESPONSIBLE FOR RESETTling EXISTING STRUCTURES (MANHOLES, CLEAN-OUTS, ETC.) TO REMAIN TO FINISH GRADE AS NECESSARY.
8. ALL NEW ASPHALT CONCRETE PAVING AND CONCRETE WORK SHALL MATCH THE EXISTING GRADE AT LIMITS OF WORK.
12. REPLACE EXISTING ASPHALT CONCRETE PAVING AND/OR CONCRETE AS REQUIRED DUE TO NEW CONSTRUCTION ACTIVITIES. INSTALL NEW PAVING PER PLAN SPECIFICATION.
13. ALL CURBS SHALL HAVE A 6" CURB FACE UNLESS OTHERWISE NOTED.
14. ASPHALT PRIME COAT SHALL BE APPLIED (RATE OF APPLICATION SHALL BE BETWEEN 0.2 AND 0.5 GALLONS PER SQUARE YARD) TO THE COMPACTED AGGREGATE BASE PRIOR TO PLACING ASPHALTIC CONCRETE.
15. ASPHALT CONCRETE PAVEMENT SHALL BE PLACED IN TWO OR MORE LIFTS AS STATED IN THE GEOTECHNICAL REPORT.
16. PRIOR TO PLACING THE AGGREGATE BASE AND/OR ASPHALT PAVEMENT, THE SUBGRADE SHALL BE TREATED WITH A SOIL STERILIZATION TYPE WEED KILLER.
17. EXISTING ASPHALT PAVING AND/OR CONCRETE SHALL BE CUT TO A NEAT, STRAIGHT LINE, WHEN APPLICABLE. ALL EXPOSED VERTICAL SURFACES SHALL BE TACK COATED BELOW THE FINISH GRADE LINE WITH ASPHALT EMULSION PRIOR TO PAVING.
18. A SEAL COAT SHALL BE APPLIED TO ALL NEW ASPHALTIC PAVEMENT PER MANUFACTURED SPECIFICATIONS.
19. ALL NEW CONCRETE PAVING SHALL BE SEALED.
20. THE SITE SHALL BE UNIFORMLY GRADED BETWEEN POINTS WHERE ELEVATIONS ARE SHOWN OR BETWEEN EXISTING FINISHED GRADES OR CONFORM POINTS.
21. THE CONTRACTOR SHALL FAMILIARIZE THEMSELVES WITH THE AMERICANS WITH DISABILITIES ACT (ADA) STANDARDS AND ALL CONSTRUCTION SHALL COMPLY WITH THE REQUIREMENTS ESTABLISHED THEREIN. IF THE DESIGN SHOWN HEREON DIFFERS FROM SAID ADA STANDARDS, THE CONTRACTOR SHALL NOTIFY THE CIVIL ENGINEER IMMEDIATELY. ALL WORK IN THOSE AREAS AFFECTED SHALL CEASE UNTIL THE PROBLEM IS RESOLVED.

THIS PROJECT IS BASED ON A TOPOGRAPHIC DESIGN SURVEY BY:  
ALTURA LAND CONSULTANTS  
6551 REVERE PARKWAY, SUITE 165  
CENTENNIAL CO 80111  
PHONE 720-531-4665

THIS SURVEY SHALL BE CONSIDERED A PART OF THESE PLANS.

BENCH MARK FINISH FLOOR = 100.00 FEET

LOCATED AT THE BUILDING ENTRANCE ON THE EAST SIDE OF THE BUILDING



**3151 AIRPORT BLVD.**

**VICINITY MAP**

**NOT TO SCALE**

**C1.0 COVER SHEET**

**C2.0 GRADING PLAN**

**C3.0 DETAILS**



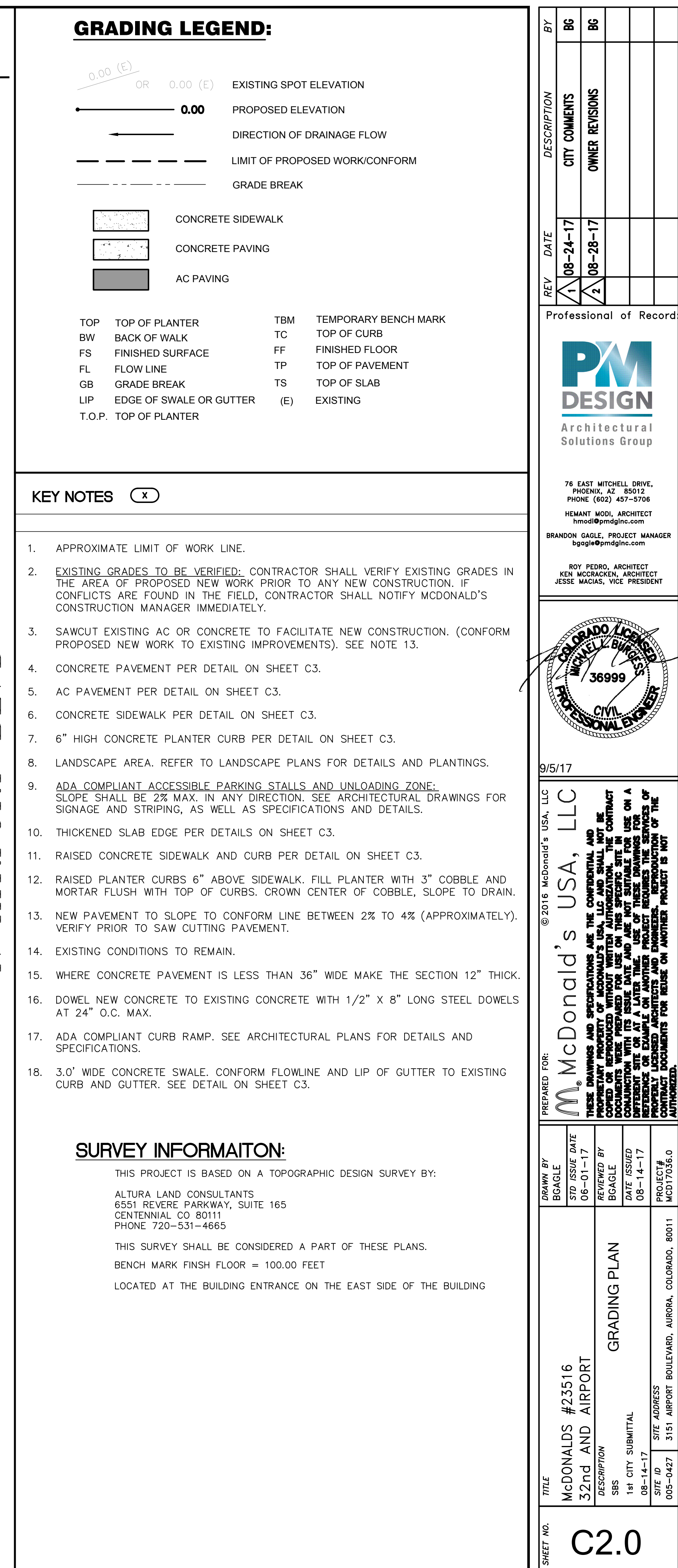
5/17

**McDonald's USA, LLC**

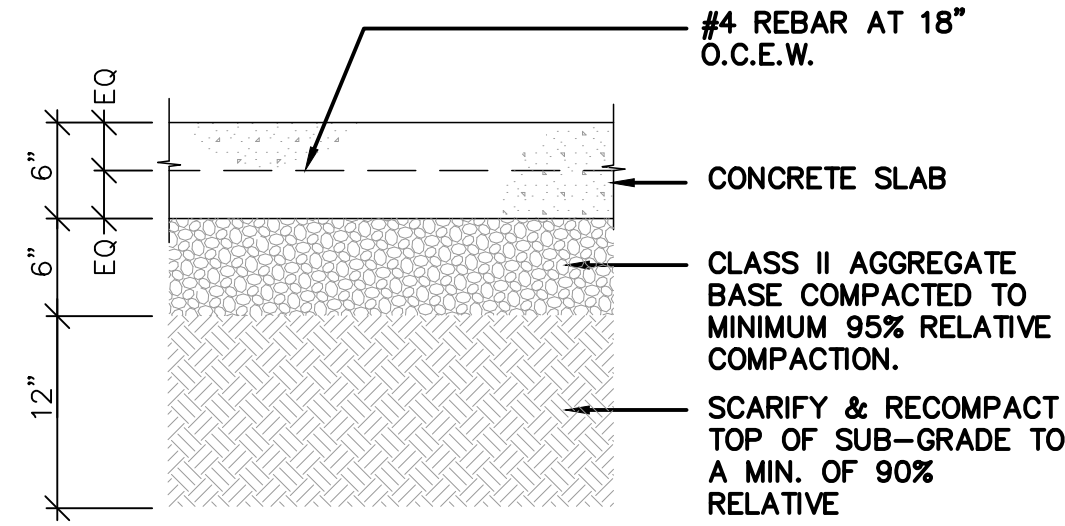
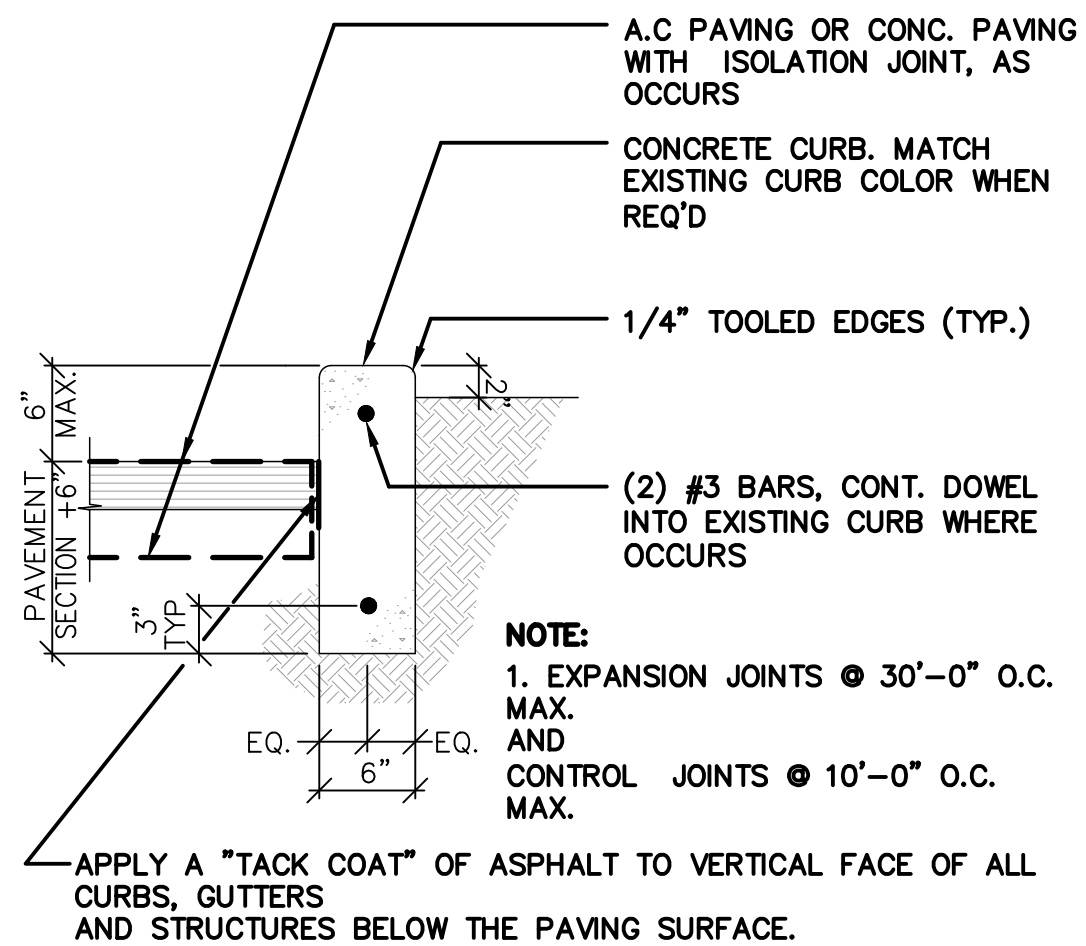
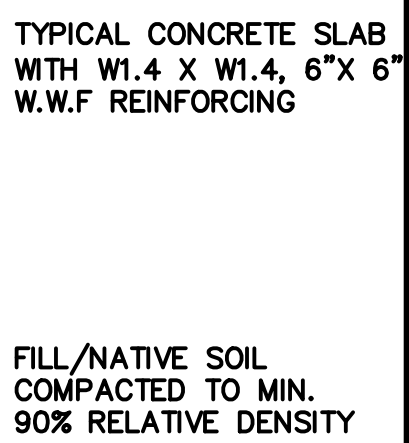
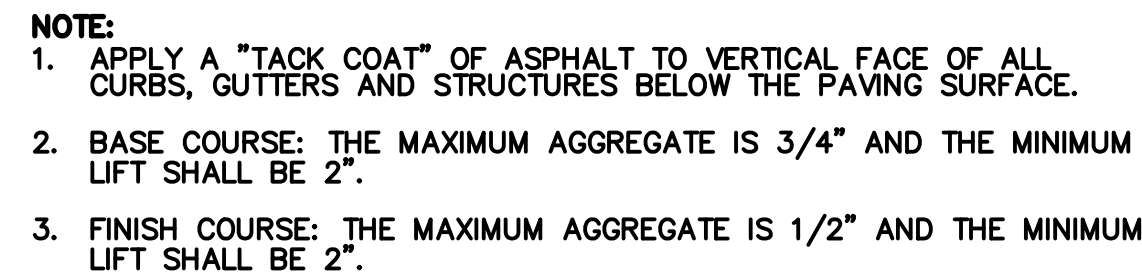
THESE DRAWINGS AND SPECIFICATIONS ARE THE CONFIDENTIAL AND PROPRIETARY PROPERTY OF MCDONALD'S USA, LLC. THEY ARE NOT TO BE REPRODUCED OR REPRODUCED WITHOUT WRITTEN AUTHORIZATION. THE CONTRACT DOCUMENTS WERE PREPARED FOR USE ON THIS SPECIFIC SITE ON A LIMITED BASIS. ANY REPRODUCTION OF THESE DOCUMENTS FOR USE ON ANY OTHER PROJECT WITHOUT THE WRITTEN AUTHORIZATION OF MCDONALD'S USA, LLC IS STRICTLY PROHIBITED. ANY REPRODUCTION OF THE CONTRACT DOCUMENTS FOR USE ON ANY OTHER PROJECT WITHOUT THE WRITTEN AUTHORIZATION OF MCDONALD'S USA, LLC IS STRICTLY PROHIBITED. ANY REPRODUCTION OF THE CONTRACT DOCUMENTS FOR USE ON ANY OTHER PROJECT WITHOUT THE WRITTEN AUTHORIZATION OF MCDONALD'S USA, LLC IS STRICTLY PROHIBITED.

McDONALDS #23516 32nd AND AIRPORT	DESCRIPTION	COVER SHEET	STG ISSUE DATE	BAGLE
	1st CITY SUBMITAL SBS		06-01-17	
	1st CITY SUBMITAL SBS		REVIEWED BY BOGALD	
	1st CITY SUBMITAL SBS		DATE ISSUED 08-14-17	
	1st CITY SUBMITAL SBS		PROJECT# MCD017036.0	



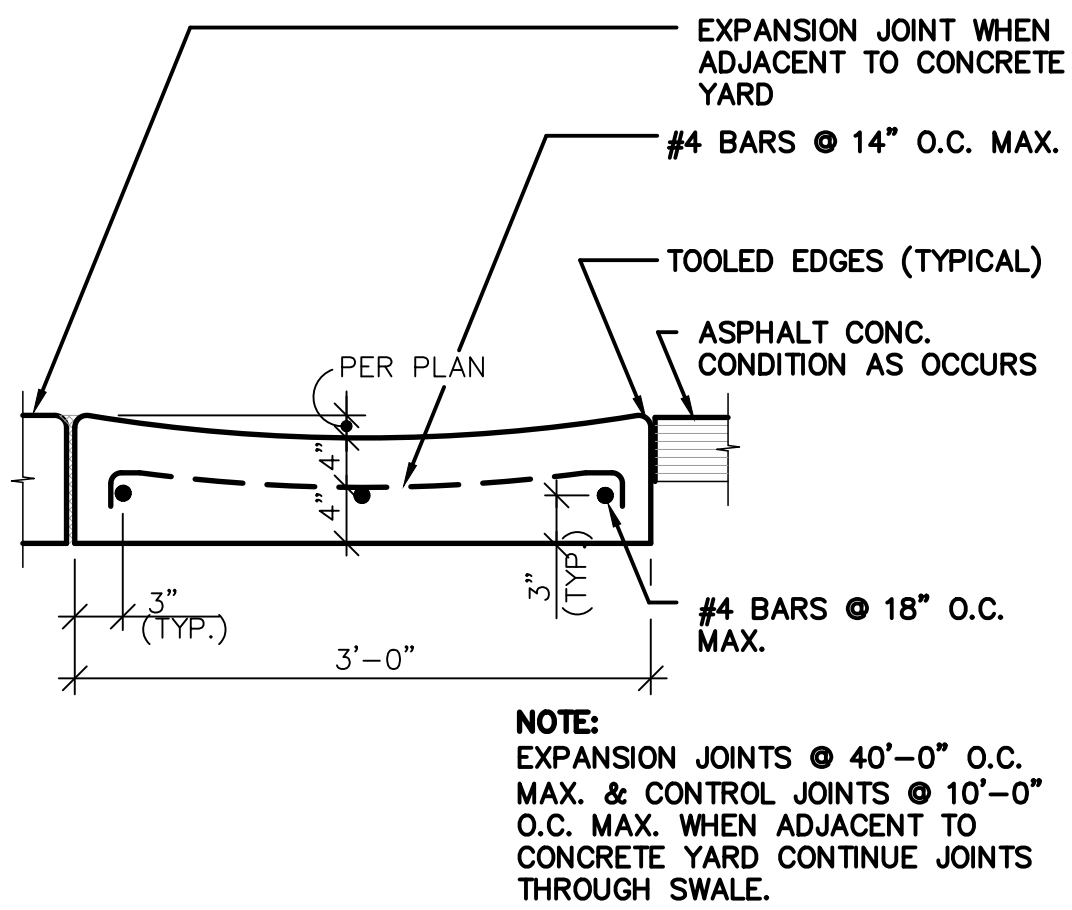
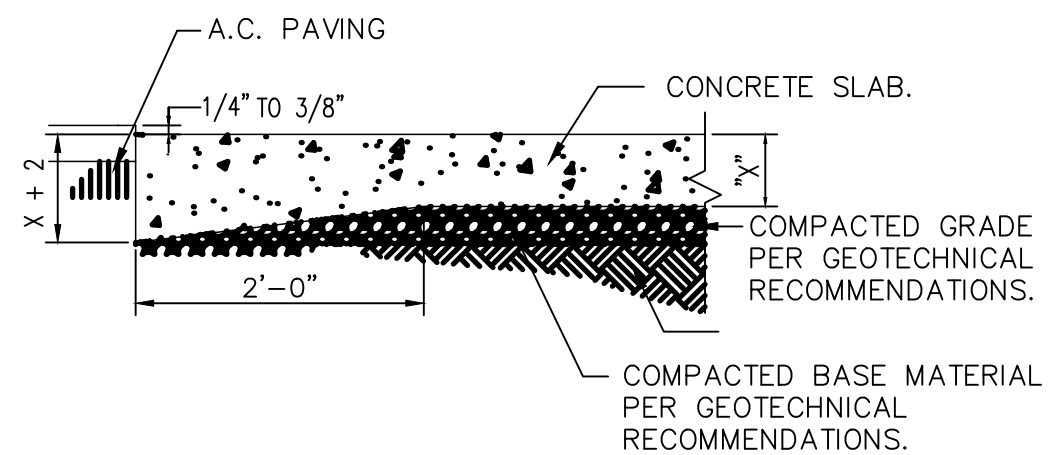






1
NO SCALE

2
NO SCALE

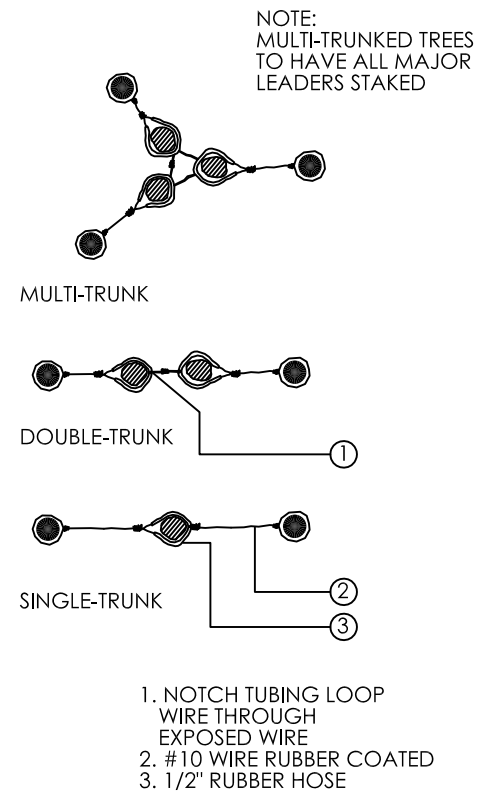


5
NO SCALE

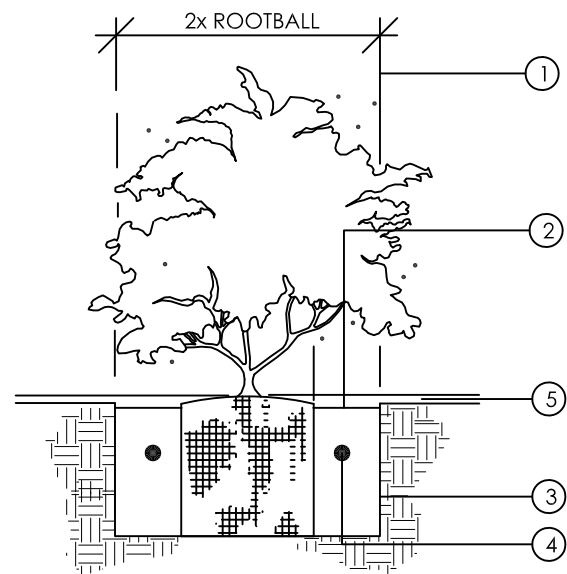
6
NO SCALE







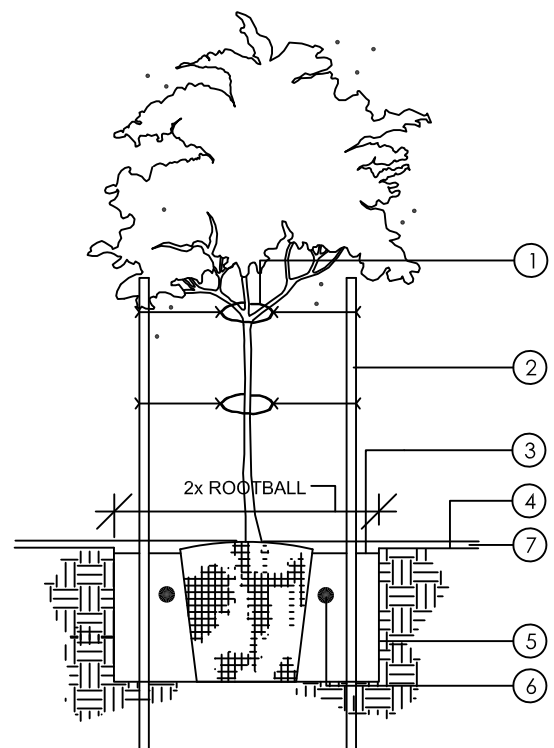
**T&M** TREE GUYING DETAIL  
NOT TO SCALE



1. MINIMUM DIMENSION FOR 5 GAL. PLANTS
2. 1" BASIN
3. ROUGHEN SIDES OF PLANT PIT TO PREVENT GLAZING
4. AGRIFORM TABLETS SEE SPECS. FOR RATIO
5. 2" DEPTH OF DECOMPOSED GRANITE. (SEE LEGEND FOR TYPE)

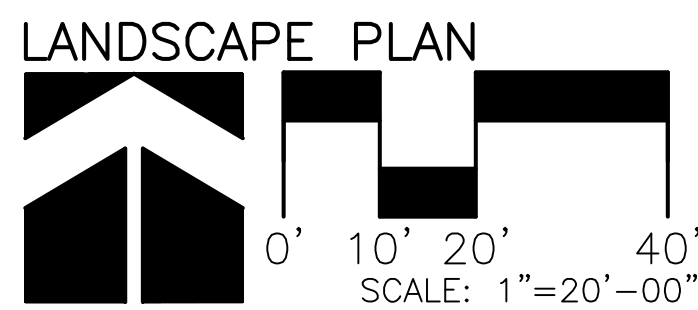
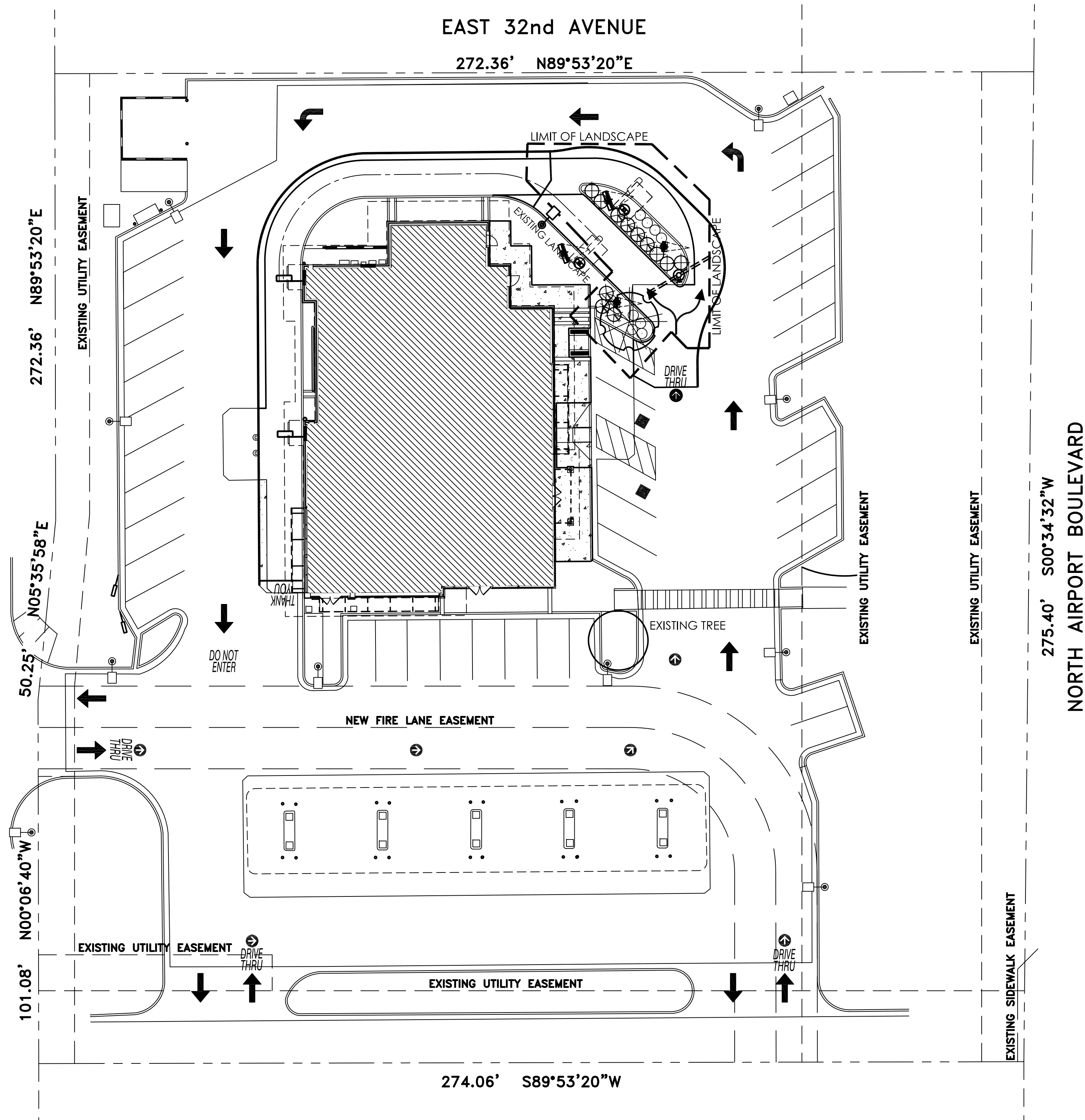
BACKFILL PLANT PIT WITH SOIL MIX PER PHX MAG SUPPLEMENT.

**T&M** SHRUB PLANTING DETAIL  
NOT TO SCALE



**T&M** DOUBLE STAKING DETAIL  
NOT TO SCALE

EAST AIRPORT CIRCUIT



## LANDSCAPE LEGEND

- ACER FREMANII 'JEFFER'S RED'  
AUTUMN BLAZE MAPLE  
4-4" CALIPER
- JUNIPERUS SABINA 'BUFFALO'  
BUFFALO JUNIPER  
5 GALLON
- RIBES AUREUM  
GOLDEN CURRANT  
5 GALLON
- SPIREA BUMALDA 'FROEBEL'  
FROEBEL SPIREA  
5 GALLON

MATCH EXISTING TOP-DRESS  
MATCH EXISTING  
3" DEPTH IN LANDSCAPE AREAS

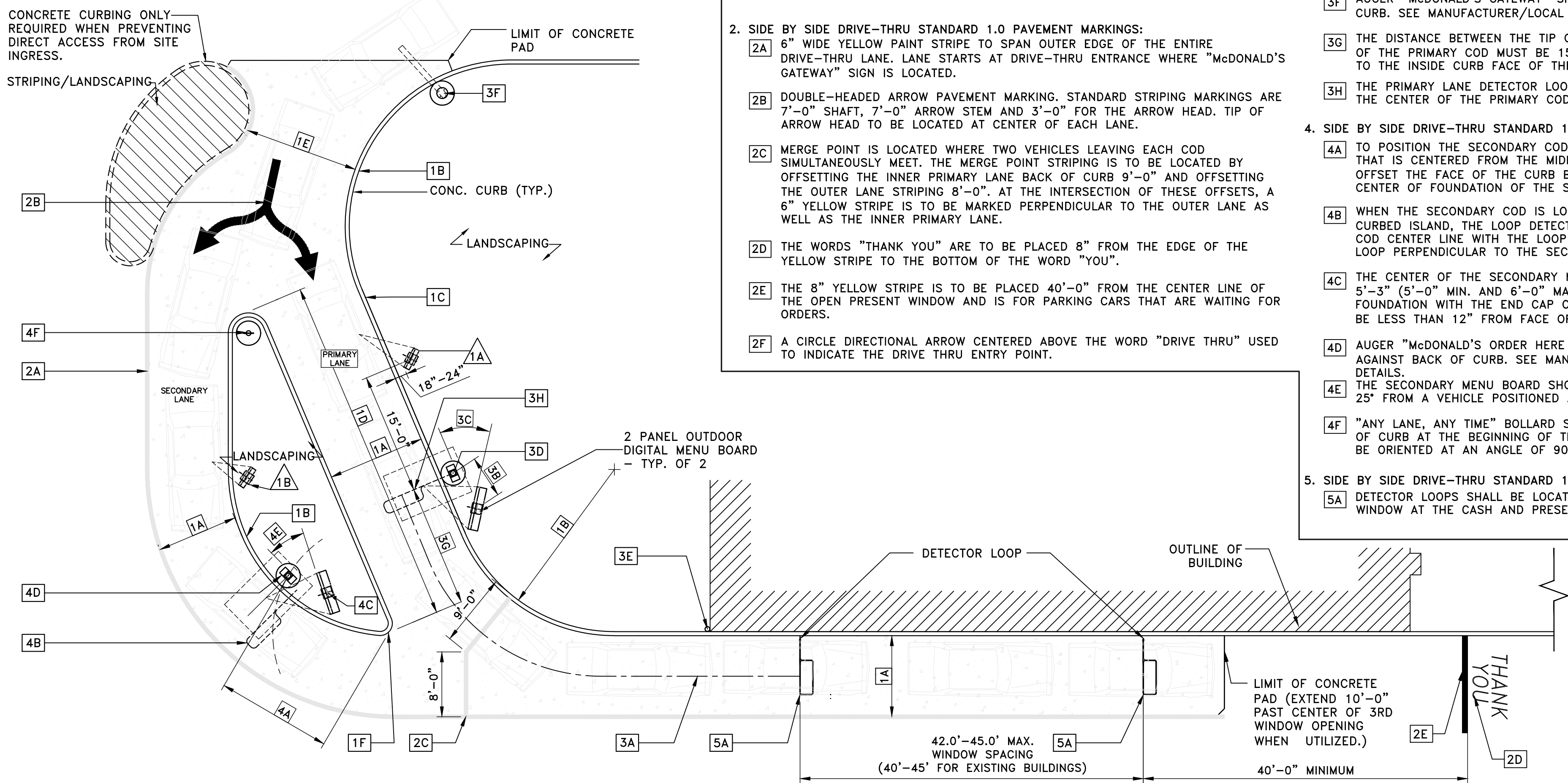
T.J. McQUEEN & ASSOCIATES, INC.  
LANDSCAPE ARCHITECTURE  
URBAN DESIGN  
SITE PLANNING  
8433 East Cholla St., Suite 101  
Scottsdale, Arizona 85260  
P. (602) 265-0320 F. (602) 266-6619  
EMAIL: tmmcqueen@tjmla.net



SHEET NO.	TITLE	DRAWN BY	STD. ISSUE DATE	REVIEWED BY	DATE	REV	DESCRIPTION	BY
La.01	McDonalds #23516 32nd AND AIRPORT	BSAGLE	06-01-17	BSAGLE	07-25-17			
	DESCRIPTION							
	1st CITY SUBMITTAL							
	SITE ID							
	005-0427							
	SITE ADDRESS							
	3151 AIRPORT BOULEVARD, AURORA, COLORADO, 80011							
	PROJECT#							
	MCD17036.0							
	PREPARED FOR:							
	McDonald's USA, LLC							
	© 2016 McDonald's USA, LLC							
	THESE DRAWINGS AND SPECIFICATIONS ARE THE CONFIDENTIAL AND PROPRIETARY INFORMATION OF McDonald's USA, LLC. NO PART OF THESE DRAWINGS OR SPECIFICATIONS MAY BE REPRODUCED, COPIED, OR REPRODUCED WITHOUT WRITTEN AUTHORIZATION. THE CONTRACT DOCUMENTS WERE PREPARED FOR USE ON THIS SPECIFIC SITE. ANY REUSE OF THESE DRAWINGS OR SPECIFICATIONS FOR A DIFFERENT SITE OR FOR A LATER TIME WITHOUT THE WRITTEN PERMISSION OF T.J. McQUEEN & ASSOCIATES, INC. IS PROHIBITED. ANY REUSE OF THESE DRAWINGS OR SPECIFICATIONS FOR A DIFFERENT SITE OR FOR A LATER TIME WITHOUT THE WRITTEN PERMISSION OF T.J. McQUEEN & ASSOCIATES, INC. IS PROHIBITED.							



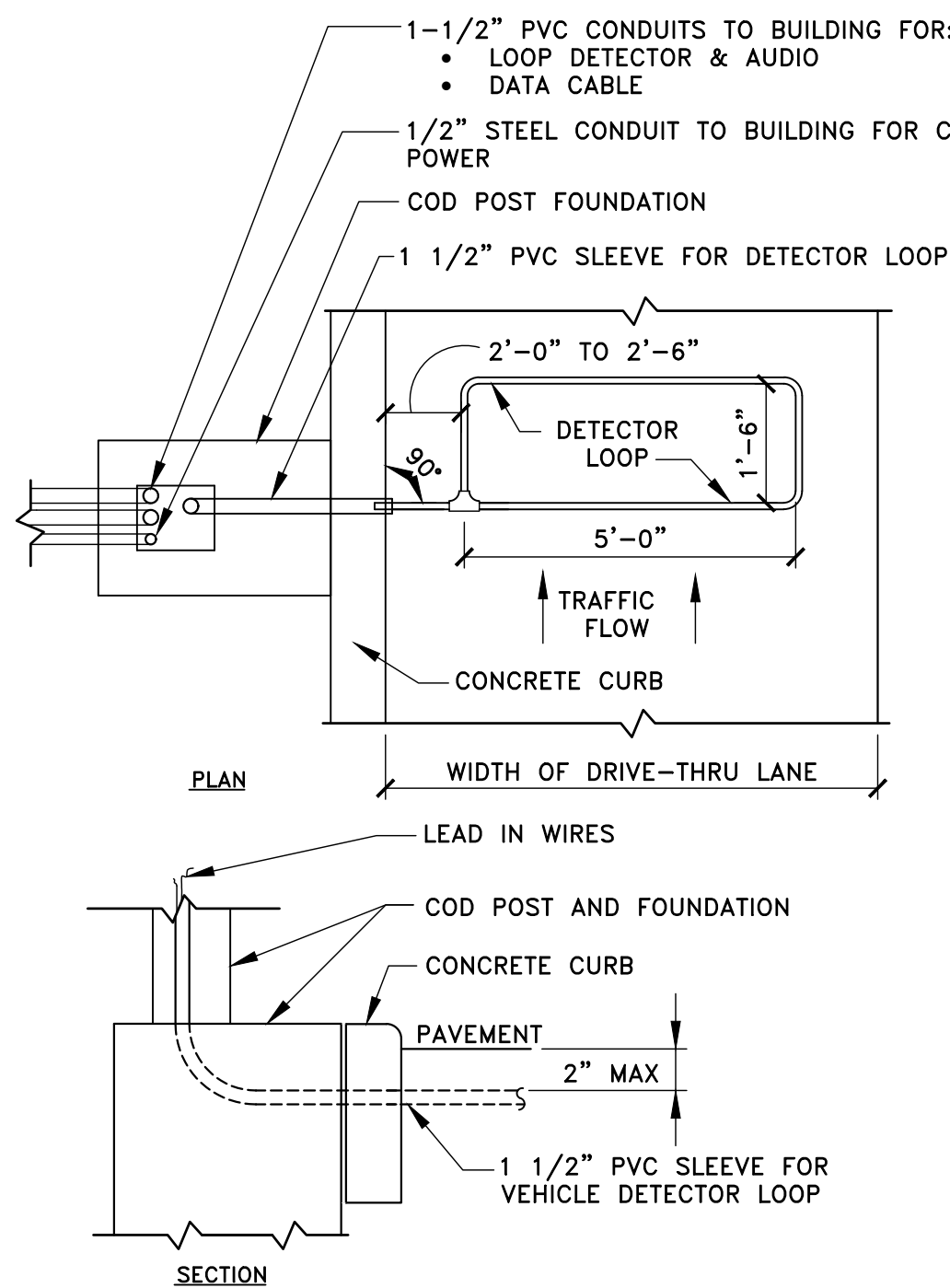
THE LAYOUT OF THE DRIVE-THRU LANES SHOWN IN THIS DETAIL ILLUSTRATES DRIVE-THRU DESIGN PRINCIPLES.



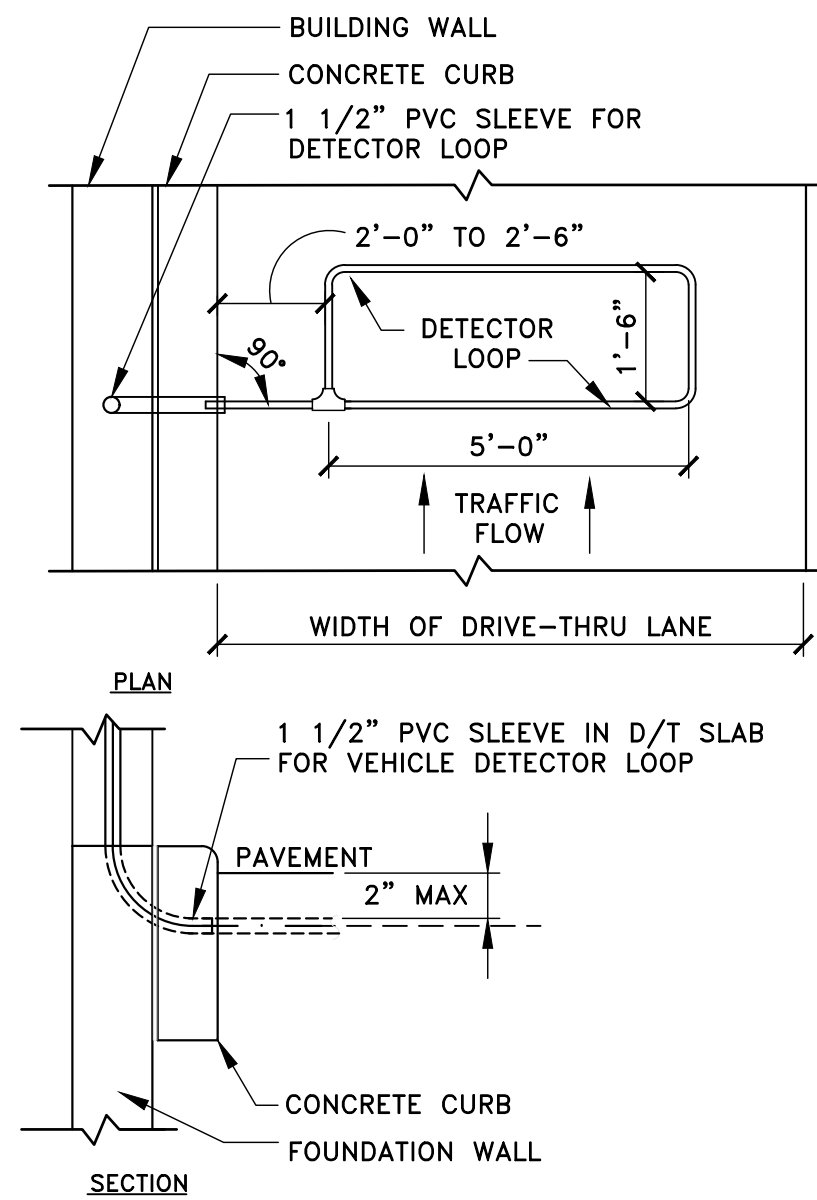
1 DRIVE THRU LAYOUT GUIDELINES  
ODMB 1" = 10'-0"

#### NOTES

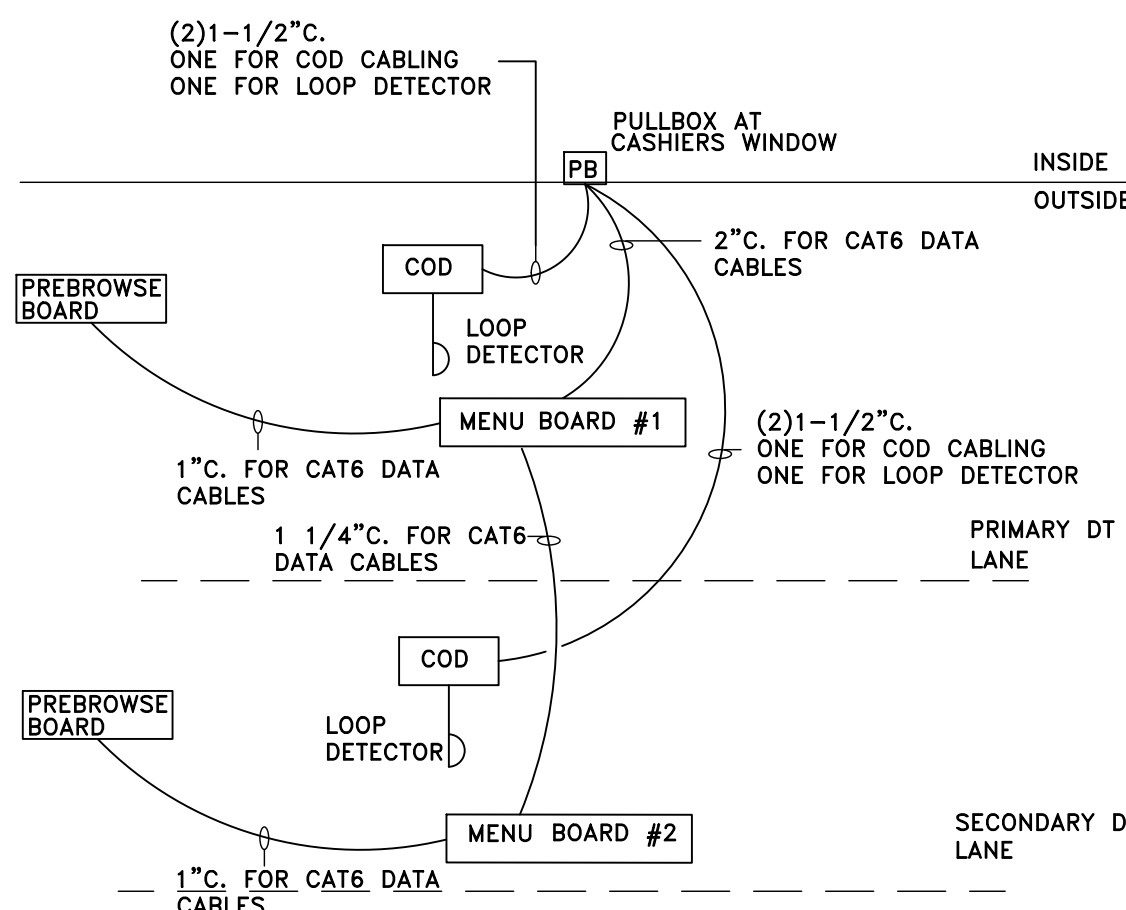
1. VERIFY CONDUIT SIZES AND LAYOUT WITH DETECTOR LOOP MANUFACTURER.
2. CENTER VEHICLE DETECTOR LOOP IN DRIVE THRU LANE. INSTALL PER MFR. RECOMMENDATIONS.
3. NO STEEL (REBAR OR ELECTRICAL WIRE) SHALL BE USED WITHIN 2' OF LOOP.
4. DETECTOR LOOP MANUFACTURERS:  
DETECTOR LOOPS MAY BE BY ONE OF THE FOLLOWING COMPANIES OR EQUAL.  
3M: 1-800-328-0033  
HME: 1-800-848-4468
5. DETECTOR LOOP MATERIAL:  
PVC TUBING 1/2" I.D. 100 PSI LOOP MADE FROM ONE LENGTH OF THIN FOURTEEN GAUGE STRANDED WIRE. LEAD-IN IS PRE-TWISTED AT FACTORY.
6. DETECTOR LOOP CONSTRUCTION:  
FORMED WITH ONE CONTINUOUS LENGTH OF PVC WITH NO SHARP CORNERS AS DETAILED. WIRE LOOPED, FORMED, & PITGAILED AS DETAILED.



A - C.O.D. DETECTOR LOOP



B - DT WINDOW DETECTOR LOOP



3 DT LOW VOLTAGE CONDUIT DIAGRAM  
ODMB NOT TO SCALE

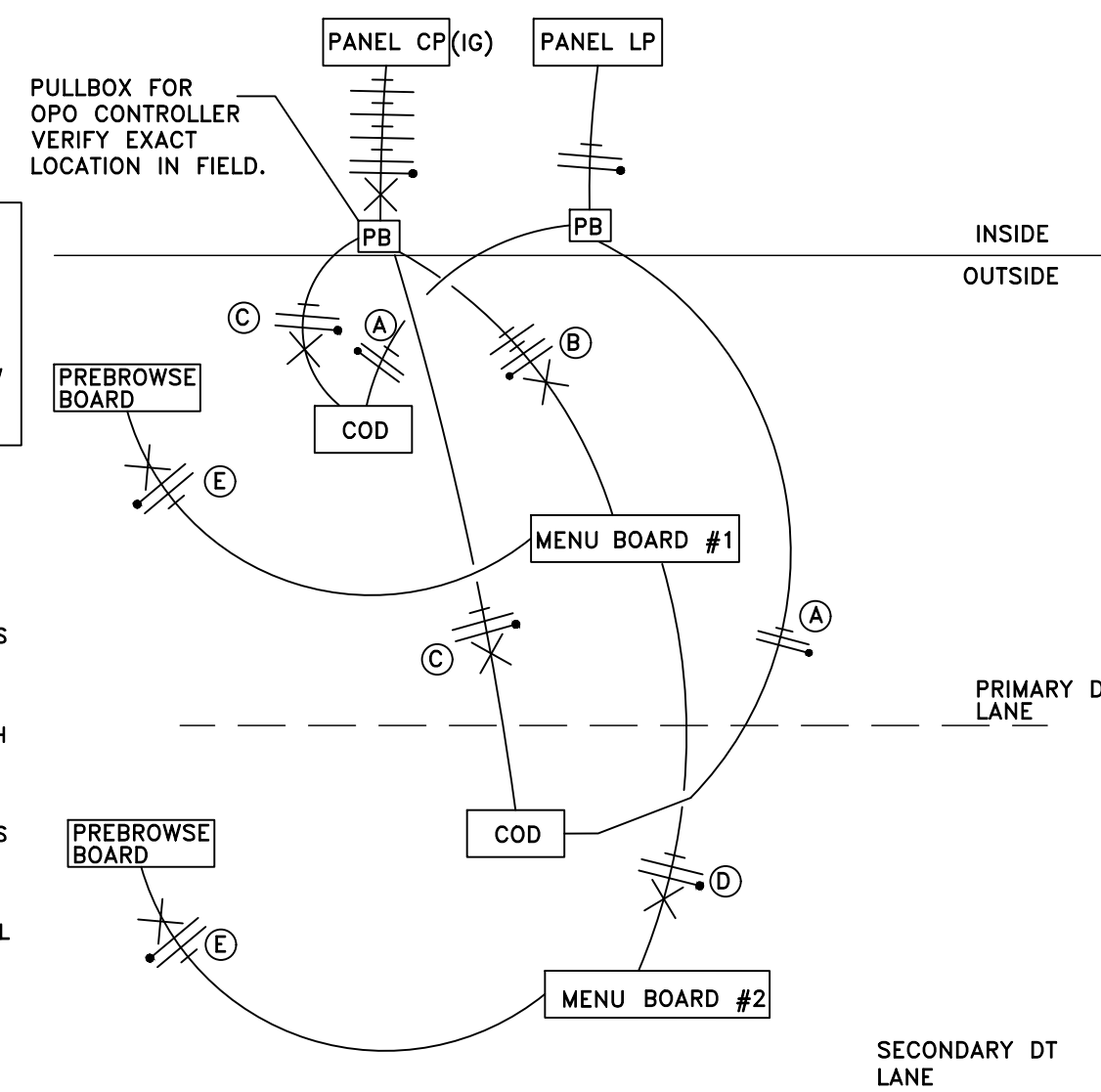
#### NOTE:

- \* VERIFY EXACT CIRCUITS & QUANTITIES OF CIRCUITS WITH PANEL SCHEDULES AND MANUFACTURERS INSTALLATION INSTRUCTIONS.

FOR EXISTING LOCATIONS:  
\* VERIFY EXISTING CP PANEL HAS AMPACITY AND SUFFICIENT SPACES/SPACE FOR TWO (2) NEW 20A/1P CIRCUITS. UPGRADE CP PANEL TO 42 CIRCUITS IF NECESSARY.

- \* VERIFY EXISTING PULLBOXES ARE SIZED FOR NEW CONDUIT ROUTING. MODIFY PULLBOXES IF NECESSARY.

- 2#12 & 1#12 GND. TO LP-1 FOR COD CANOPY LIGHTING.
- 4#12 & 1#12 GND & 1#12 ISOLATED GND., TO CP FOR ISOLATED GROUND POWER TO MENUBOARDS AND MEDIA PLAYERS.
- 2#12 & 1#12 GND & 1#12 ISOLATED GND., TO CP FOR ISOLATED GROUND POWER TO COD'S. EACH COD SHALL BE ON ITS OWN SEPARATE CIRCUIT.
- 2#12 & 1#12 GND & 1#12 ISOLATED GND., TO CP FOR ISOLATED GROUND POWER TO MENUBOARDS AND MEDIA PLAYERS.
- 2#12 & 1#12 GND & 1#12 ISOLATED GND., TO CP FOR ISOLATED GROUND POWER TO FOR PRESELL BOARDS AND MEDIA PLAYER.



4 DRIVE THRU POWER DIAGRAM  
ODMB NOT TO SCALE

#### SIDE BY SIDE DRIVE-THRU STANDARD 1.0 FEATURES:

1. SIDE BY SIDE DRIVE-THRU STANDARD 1.0 EQUIPMENT:

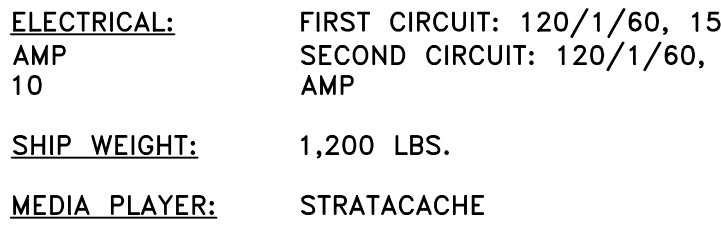
- A PRE-BROWSE BOARD MUST BE 18"-24" FROM FACE OF CURB. THE DISTANCE BETWEEN THE PRIMARY COD AND PRE-BROWSE BOARD IS TO BE 15" AS MEASURED ALONG THE CENTER LINE OF THE LANE. THIS IS MEASURED FROM THE CENTER OF THE PRE-BROWSE BOARD FOUNDATION TO THE CENTER OF THE COD FOUNDATION. THE ANGLE (APPROXIMATELY 50°) OF THE PRE-BROWSE BOARD SHOULD MAXIMIZE VISIBILITY TO THE SECOND CAR FROM COD.
- B PRE-BROWSE BOARD MUST BE MIN. 12" FROM FACE OF CURB. THE DISTANCE BETWEEN THE SECONDARY COD AND PRE-BROWSE BOARD IS TO BE 15" AS MEASURED ALONG FACE OF THE CURB. THIS IS MEASURED FROM THE POINT PERPENDICULAR TO THE CENTER OF THE PRE-BROWSE BOARD FOUNDATION TO THE POINT PERPENDICULAR TO THE CENTER OF THE COD FOUNDATION. THE ANGLE OF THE PRE-BROWSE BOARD SHOULD MAXIMIZE VISIBILITY TO THE SECOND CAR FROM COD (PREFERRED 35°).

#### GENERAL NOTES

1. DRIVE-THRU ELEMENTS:  
COD, DRIVE-THRU PYLON/CLEARANCE POLE AND BOLLARD SIGN SHALL BE CONSISTENT WITH THE STANDARD BUILDING DESIGN DRIVE-THRU ELEMENTS.  
OTHER DESIGNS MAY NOT BE USED.
2. CONTRACTOR SHALL COORDINATE WITH APPLICABLE PLANS, McDONALD'S AREA CONSTRUCTION MANAGER, CONTENT SUPPLIER AND SIGNAGE SUPPLIER TO DETERMINE EXACT LOCATION, ORIENTATION, MOUNTING HEIGHTS, AND NUMBER OF BOARDS AND OTHER DRIVE-THRU ELEMENTS TO BE INSTALLED AT THIS SITE. ALL WORK TO BE COORDINATED WITH OTHER TRADES.
3. CONTACT McDONALD'S AREA CONSTRUCTION MANAGER FOR DRIVE-THRU ELEMENT FOOTING AND WIRING REQUIREMENTS NOT SHOWN. (INFORMATION ALSO AVAILABLE THROUGH VENDOR WEBSITES) SIGNAGE MANUFACTURER TO PROVIDE FOOTING ANCHORS & TEMPLATES TO G.C. PRIOR TO FOUNDATION POURING.
4. SEE DETAIL 2/ODMB FOR DETECTOR LOOP INFORMATION, DETAIL 3/ODMB FOR LOW VOLTAGE CONDUIT DIAGRAM AND DETAIL 4/ODMB FOR DRIVE THRU POWER DIAGRAM; VENDOR'S SPECIFICATIONS SHALL GOVERN UPON ANY DISCREPANCIES.
5. CONTRACTOR TO COORDINATE THE RESPONSIBILITIES OF THE ELECTRICAL CONTRACTOR, CONTENT SUPPLIER AND THE SIGN SUPPLIER.
6. CONTRACTOR TO INSTALL PRE-FORMED, PRE-WIRED VEHICLE DETECTOR LOOP.
7. CONTRACTOR SHALL VERIFY CONDUIT SIZES REQUIRED BY VEHICLE LOOP DETECTOR SUPPLIER.

BY	BG	BG	BG		
DESCRIPTION	CITY COMMENTS	OWNER REVISIONS	GATEWAY COMMITTEE REVIEW		
DATE	08-24-17	08-28-17	08-17-17		
REV	1	2	3		
Professional of Record:					
<div><div><div>PM DESIGN</div><div>Architectural Solutions Group</div></div><div>76 EAST MITCHELL DRIVE, PHOENIX, AZ 85012 PHONE (602) 457-5706 HEMANT MOOL, ARCHITECT hmool@pmdginc.com BRANDON GAGLE, PROJECT MANAGER bgagle@pmdginc.com ROY PEDRO, ARCHITECT KEN MCCrackEN, ARCHITECT JESSE MACIAS, VICE PRESIDENT</div></div>					
© 2016 McDonald's USA, LLC					
McDonald's USA, LLC THESE DRAWINGS AND SPECIFICATIONS ARE THE CONFIDENTIAL AND PROPRIETARY INFORMATION OF McDonald's USA, LLC. NO PART OF THESE DRAWINGS OR SPECIFICATIONS SHALL BE REPRODUCED OR TRANSMITTED IN ANY FORM OR BY ANY MEANS, ELECTRONIC OR MECHANICAL, INCLUDING PHOTOCOPYING, RECORDING, OR BY ANY INFORMATION STORAGE AND RETRIEVAL SYSTEM, WITHOUT THE WRITTEN AUTHORIZATION OF McDonald's USA, LLC. THE CONTRACT DOCUMENTS WERE PREPARED FOR USE ON THIS SPECIFIC SITE. IN NO EVENT SHALL McDonald's USA, LLC BE LIABLE FOR ANY DAMAGE, INCLUDING CONSEQUENTIAL DAMAGES, ARISING FROM THE USE OF THESE DRAWINGS OR SPECIFICATIONS FOR ANY PROJECT OTHER THAN THE PROJECT FOR WHICH THEY WERE PREPARED. ANY REUSE OF THESE DRAWINGS OR SPECIFICATIONS FOR ANY OTHER PROJECT WITHOUT THE WRITTEN AUTHORIZATION OF McDonald's USA, LLC IS PROHIBITED. ANY REUSE OF THESE DRAWINGS OR SPECIFICATIONS FOR ANY OTHER PROJECT WITHOUT THE WRITTEN AUTHORIZATION OF McDonald's USA, LLC IS PROHIBITED.					
PREPARED FOR:	McDonald's USA, LLC				
DRAWN BY:	BGAGLE	STD. ISSUE DATE:	08-01-17	REVIEWED BY:	BGAGLE
TITLE:	McDONALDS #23516 32nd AND AIRPORT	DESCRIPTION:	2nd CITY SUBMITTAL	DATE ISSUED:	09-08-17
SHEET NO.:	ODMB	DRIVE-THRU DETAILS		SITE ADDRESS:	3151 AIRPORT BOULEVARD, AURORA, COLORADO, 80011
				SITE ID:	005-0427
				PROJECT#:	MCD17036.0





T/CURB  
EL. +0'-0" (REF)

4 1/2"

SLOPE TOP TO SHED WATER

FINISHED GRADE

T/FOUNDATION.  
EL. +0'-3" (REF)

UNDISTURBED SOIL

(4) 3/4" DIA. ANCHOR RODS

2"X2"X1/4" STEEL PLATE

NO. 3 TIES, 10" C/C  
(3 IN TOP 5 INCHES)  
SUPPLIED BY GENERAL  
CONTRACTOR).

(4) #5 BARS  
(EQ. SPACED) SUPPLIED  
BY GENERAL CONTRACTOR.

CONCRETE FOUNDATION

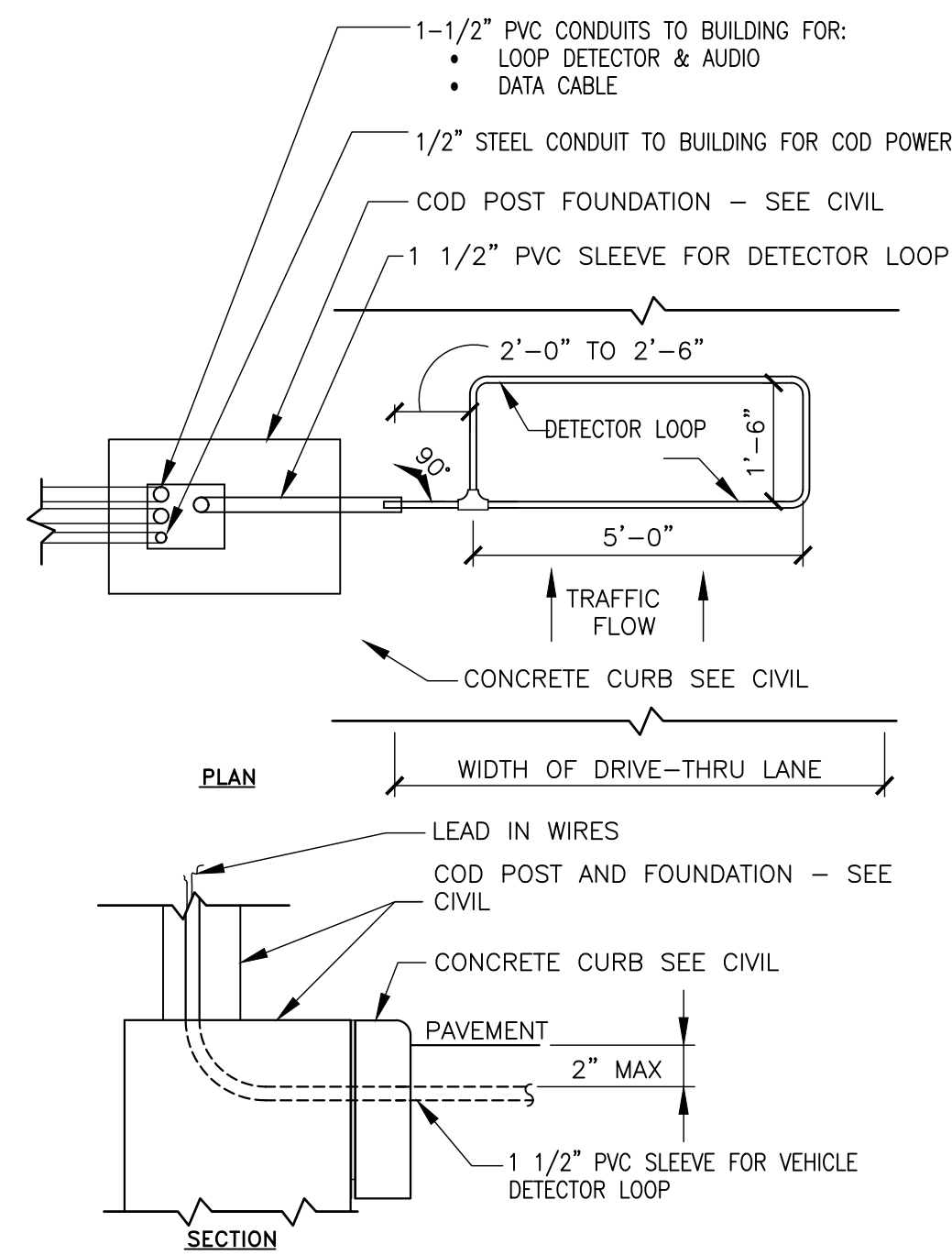
3" COVER

2' DIA.

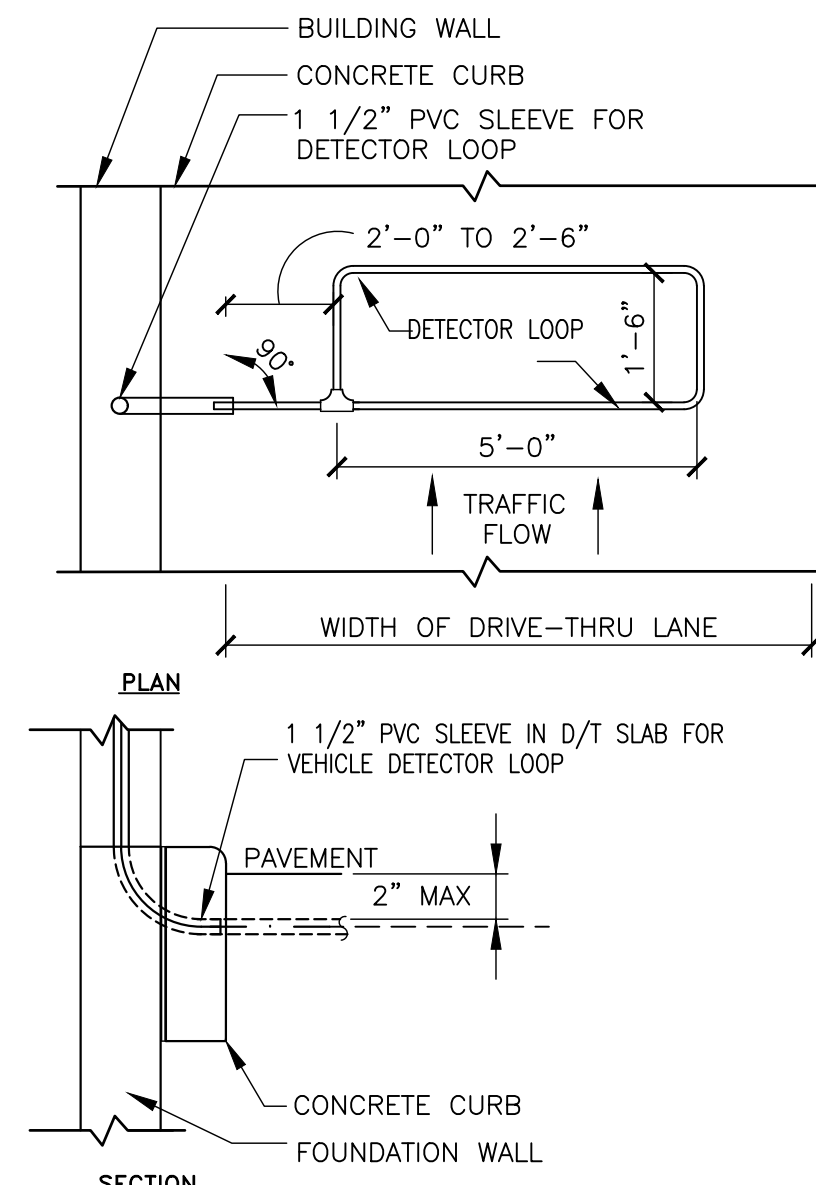
PER ENCLOSURE PROVIDER

[illegible]





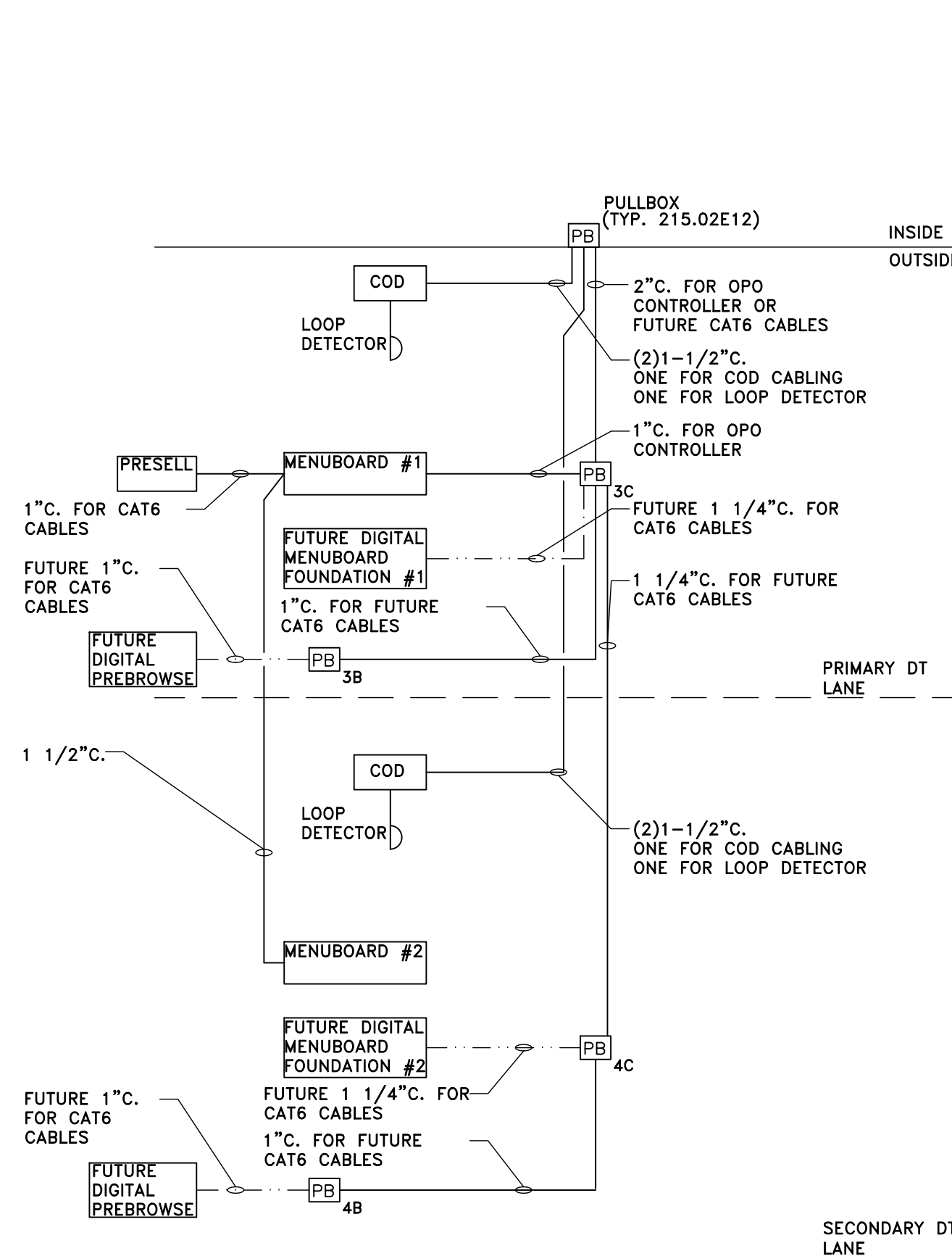
A - C.O.D. DETECTOR LOOP



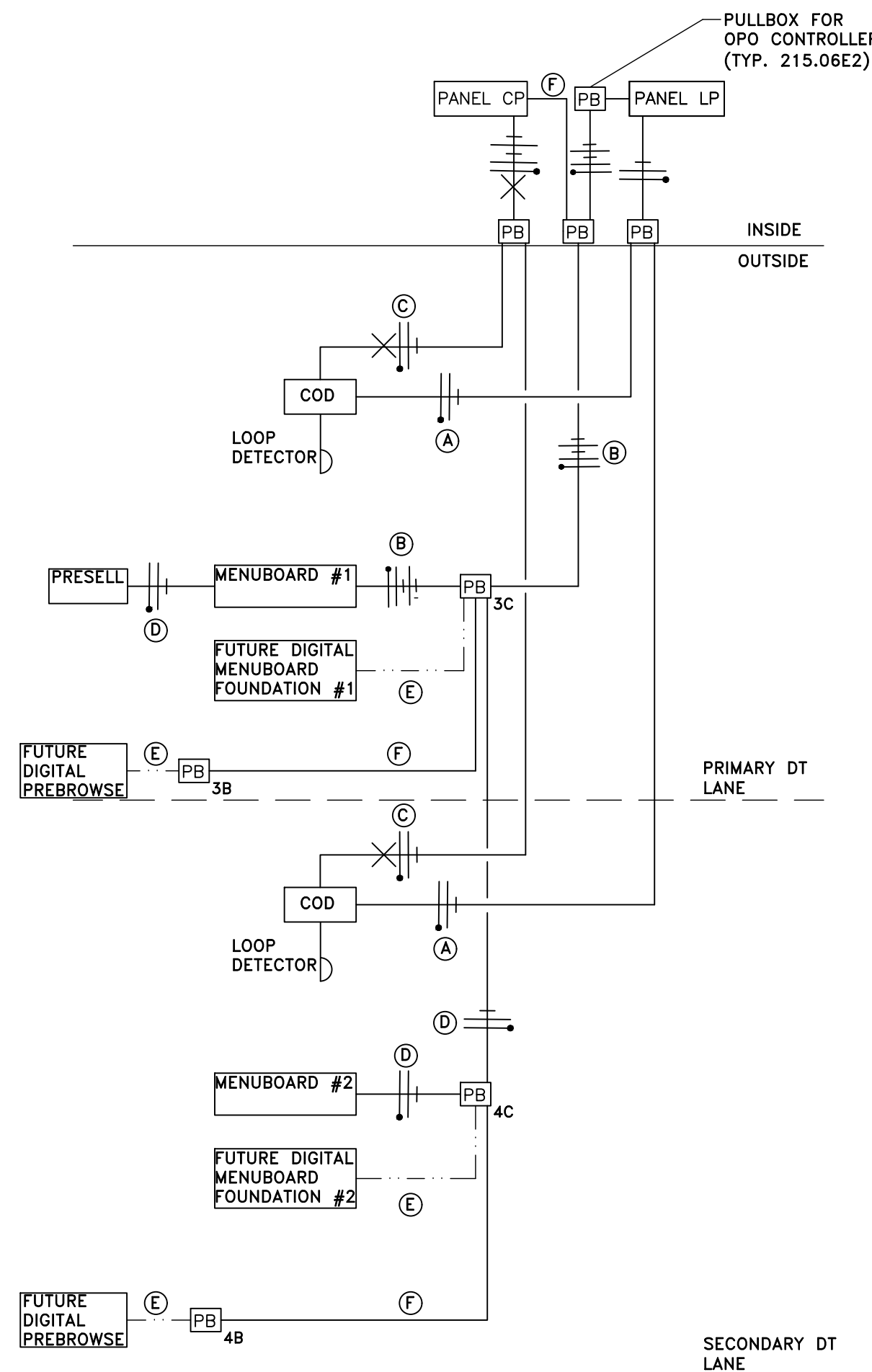
### B - DT WINDOW DETECTOR LOOP

## 1 DETECTOR LOOP DETAILS

E3.0 NOT TO SCALE



2 DT LOW VOLTAGE CONDUIT DIAGRAM (OPTION 1.0)  
E-3.0 NOT TO SCALE



3 DT POWER DIAGRAM (OPTION 1.0)  
E-3.0 NOT TO SCALE

## NOTES

1. VERIFY CONDUIT SIZES AND LAYOUT WITH DETECTOR LOOP MANUFACTURER.
2. CENTER VEHICLE DETECTOR LOOP (ITEM # 217.11E1) IN DRIVE THRU LANE. INSTALL PER MFR. RECOMMENDATIONS.
3. SEE CIVIL FOR DIMENSIONS OF DRIVE-THRU LANE CONCRETE PAD FOR DETECTOR LOOP.
4. NO STEEL (REBAR OR ELECTRICAL WIRE) SHALL BE USED WITHIN 2' OF LOOP.
5. DETECTOR LOOP MANUFACTURERS:  
DETECTOR LOOPS MAY BE BY ONE OF THE FOLLOWINGS COMPANIES OR EQUAL.  
3M: 1-800-328-0033  
HME: 1-800-848-4468
6. DETECTOR LOOP MATERIAL:  
PVC TUBING 1/2" I.D. 100 PSI LOOP MADE FROM ONE LENGTH OF THIN FOURTEEN GAUGE STRANDED WIRE. LEAD-IN IS PRE-TWISTED AT FACTORY.
7. DETECTOR LOOP CONSTRUCTION:  
FORMED WITH ONE CONTINUOUS LENGTH OF PVC WITH NO SHARP CORNERS AS DETAILED. WIRE LOOPED, FORMED, & PIGTAILED AS DETAILED.

GENERAL NOTES:

1. COORDINATE ALL CONDUIT AND CIRCUITING REQUIREMENTS WITH MANUFACTURER'S INSTALL INSTRUCTIONS.
2. ALL PULLBOXES/HANDHOLES SHOWN SHALL BE A MINIMUM OF TIER 8 QUAZTITE OR EQUAL.
3. EC SHALL REUSE EXISTING CIRCUITS WHENEVER POSSIBLE.

### ELECTRICAL POWER NOTES:

1. PROVIDE TWO (2) SPARE 20A/1P BREAKERS WITHIN COMPUTER PANEL FOR FUTURE OUTDOOR DIGITAL PREBROWSE.
2. MANUFACTURER'S INSTALLATION INSTRUCTIONS FOR TRADITIONAL OPO MENUBOARDS REQUIRES SEPARATE DEDICATED NEUTRALS ARE PROVIDED TO MENU BOARD AND PRESELL BOARD FOR EACH CIRCUIT (PLC AND LIGHTING)

## POWER DIAGRAMS TAGS:

- (A) 2#12 & 1#12 GND., TO LIGHTING PANEL FOR COD CANOPY LIGHTING
- (B) 4#12 & 1#12 GND., 3/4" TO LIGHTING PANEL FOR OPO MENU BOARD #1 LIGHTING AND PLC.
- (C) 2#12 & 1#12 GND & 1#12 ISOLATED GND., TO COMPUTER PANEL TO ISOLATED GROUND POWER TO COD'S. EACH COD SHALL BE ON ITS OWN SEPARATE CIRCUIT.
- (D) 2#12 & 1#12 GND., TO LIGHTING PANEL FOR OPO MENU BOARD #2 AND PRESELL BOARD LIGHTING.
- (E) 3/4" CONDUIT FOR OUTDOOR DIGITAL MENUBOARD OR PREBROWSE POWER.
- (F) 3/4" CONDUIT WITH PULL STRINGS FOR MENUBOARD OR PREBROWSE BOARD POWER.

