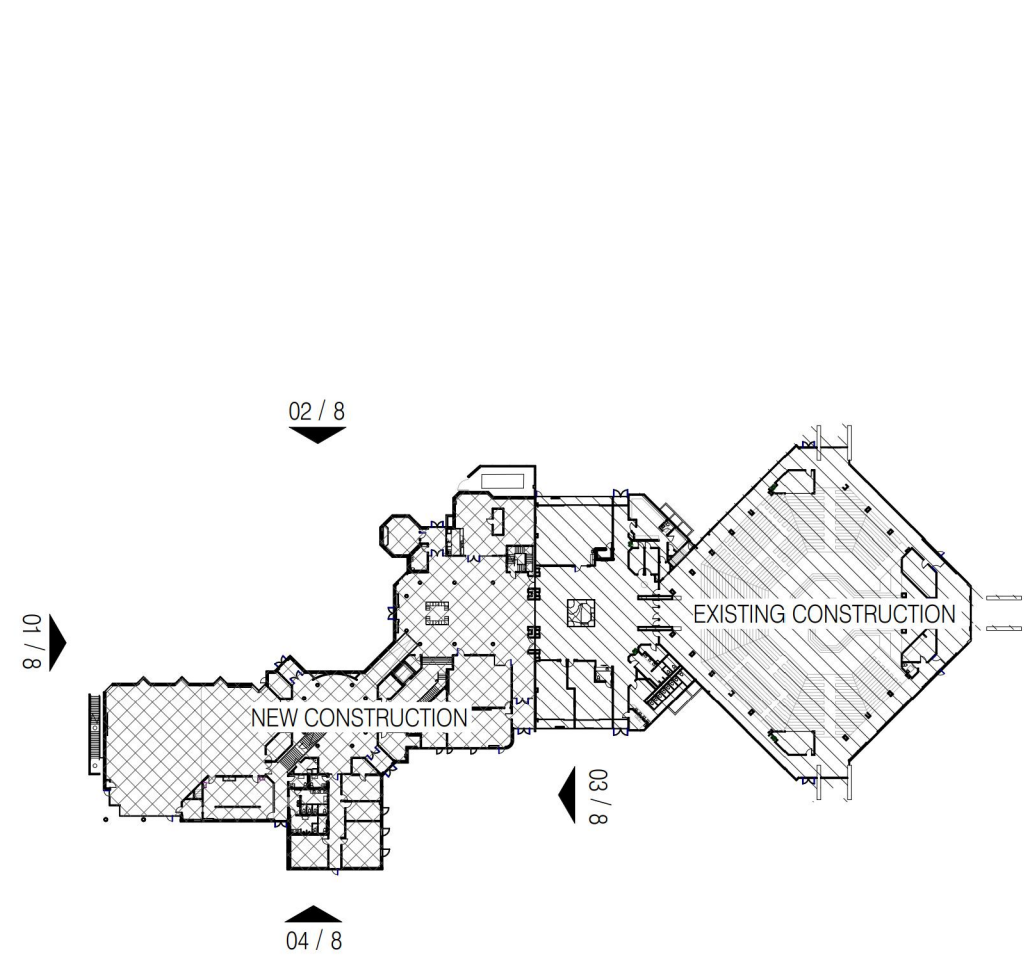
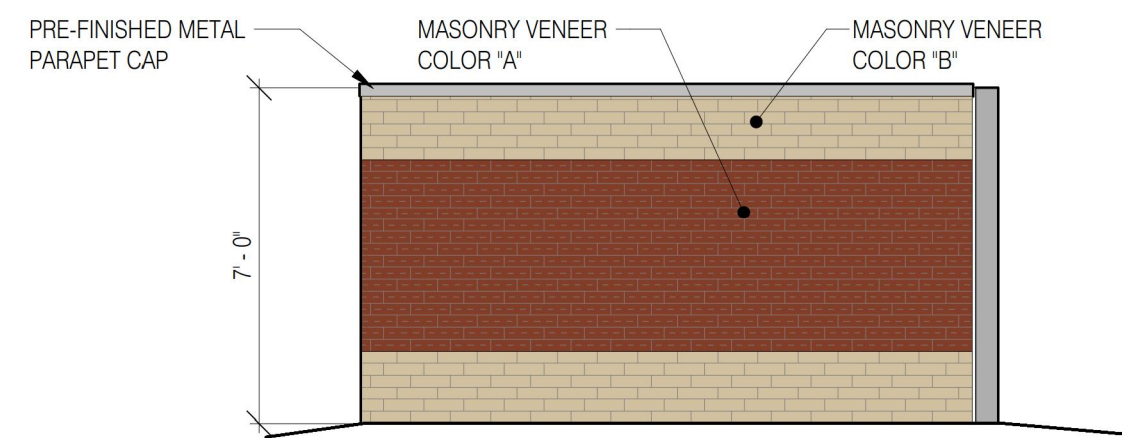


QUEEN OF PEACE CATHOLIC PARISH  
LOT 1, BLOCK 13, AURORA HILLS, FILING NO. 9,  
CITY OF AURORA, ARAPAHOE COUNTY, STATE OF COLORADO.  
RECEPTION NO. 933522 RECORDED ON OCTOBER 16 1964.

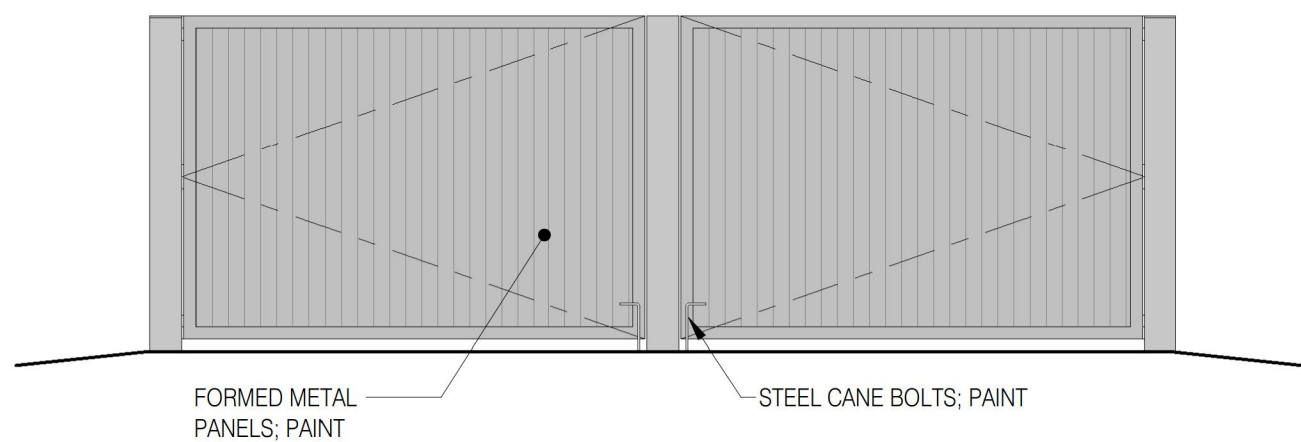
MAJOR SITE PLAN AMENDMENT



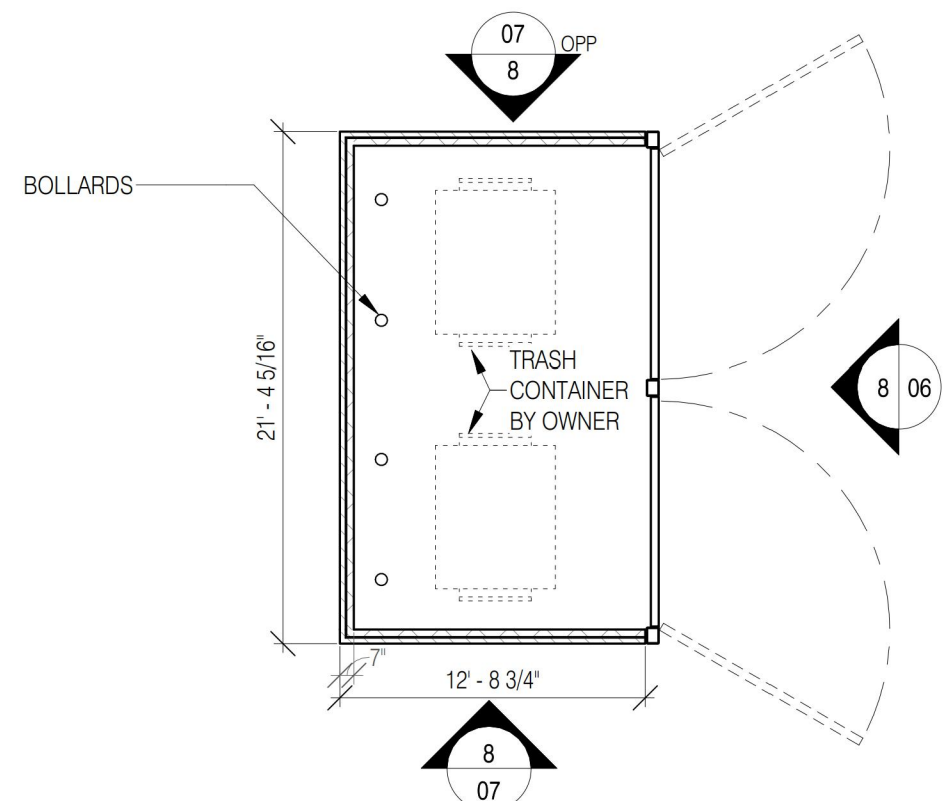
08 KEY PLAN  
1" = 100'-0"



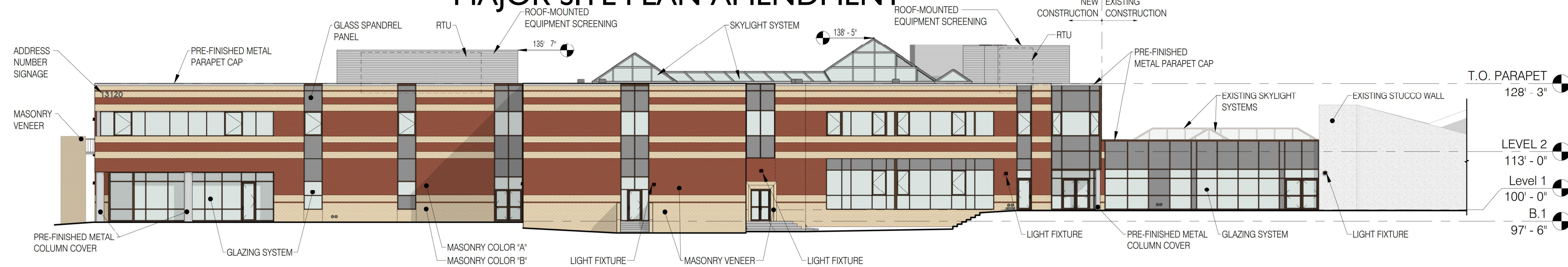
07 ENCLOSURE SOUTH ELEVATION  
1/4" = 1'-0"



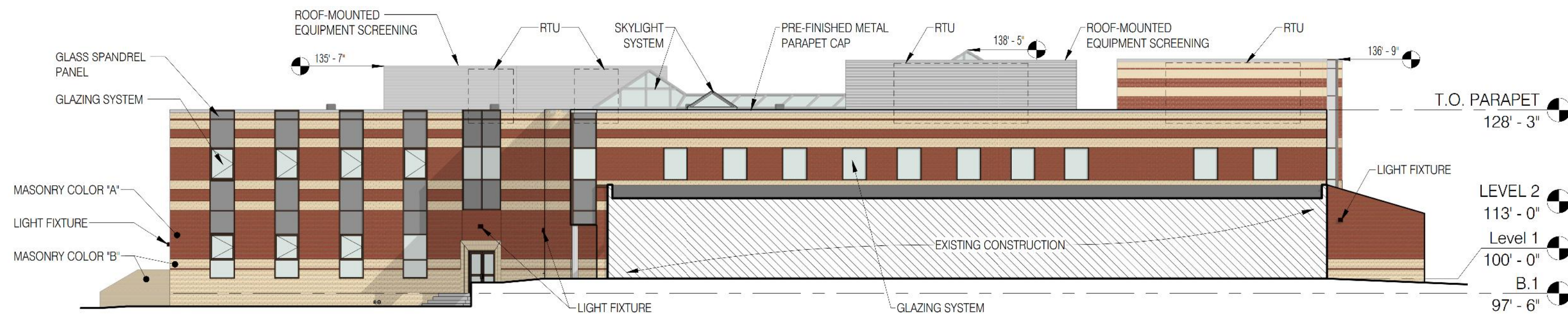
06 ENCLOSURE EAST ELEVATION  
1/4" = 1'-0"



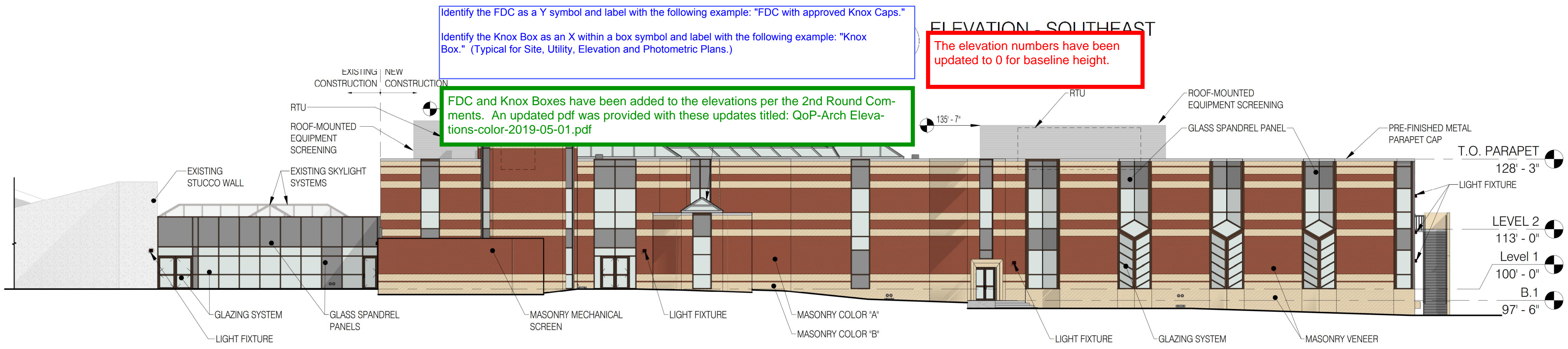
05 TRASH ENCLOSURE PLAN  
1/8" = 1'-0"



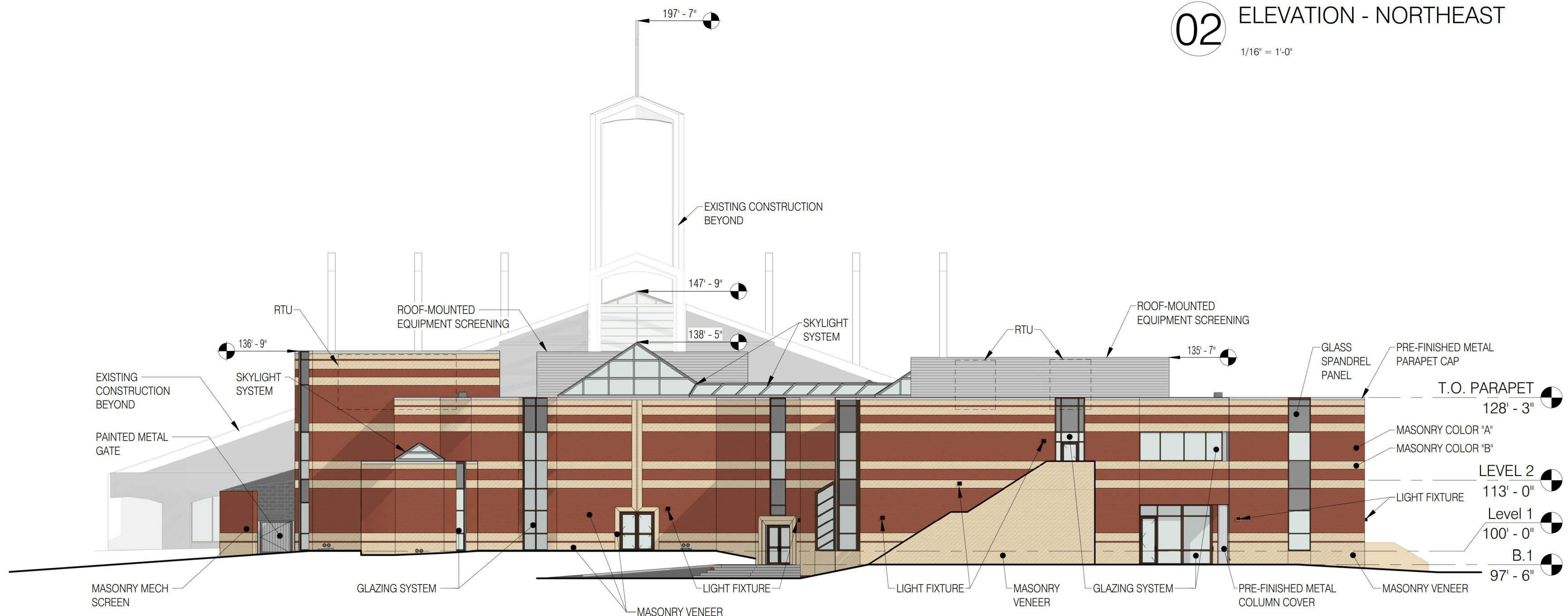
04 ELEVATION - SOUTHWEST  
1/16" = 1'-0"



ELEVATION - SOUTHEAST



02 ELEVATION - NORTHEAST  
1/16" = 1'-0"



01 ELEVATION - NORTHWEST  
1/16" = 1'-0"

**Sterling Design Associates, Inc.**  
CIVIL ENGINEERS - LANDSCAPE ARCHITECTS

2009 W. Littleton Blvd. #300  
Littleton, CO 80120  
303.794.4727 ph  
www.SterlingDesignAssociates.com

**PRELIMINARY**  
**NOT FOR CONSTRUCTION**

STERLING DESIGN ASSOCIATES, LLC			
ISSUES & REVISIONS			
NO. 1	DATE: -	BY: -	
DESCRIPTION: -			
NO. 2	DATE: -	BY: -	
DESCRIPTION: -			
NO. 3	DATE: -	BY: -	
DESCRIPTION: -			
NO. 4	DATE: -	BY: -	
DESCRIPTION: -			
NO. 5	DATE: -	BY: -	
DESCRIPTION: -			
NO. 6	DATE: -	BY: -	
DESCRIPTION: -			

DATE:	SCALE:
<b>FEBRUARY 2019</b>	-
PROJECT MANAGER:	PROJECT NO.:
<b>JLW</b>	-
DRAWN BY:	DRAWING FILE:
<b>JLW</b>	-

PROJECT:  
**QUEEN OF PEACE  
CATHOLIC PARISH  
13120 EAST KENTUCKY AVENUE  
AURORA, CO 80012**

CLIENT:  
**ARCHDIOCESE OF DENVER  
1300 S STEELE STREET  
DENVER, CO 80210**

TEL: (303) 722-4687

SHEET TITLE:  
**ARCHITECTURAL ELEVATIONS**

SHEET NUMBER:

**8 OF 8**