

NOTES:  
SEE SHEET #1 FOR LEGEND AND ADDITIONAL NOTES. SEE SHEET #2 FOR PLANT LIST AND SPECIFICATIONS.

# LANDSCAPE PLAN THE VILLAGE AT MILL RUN

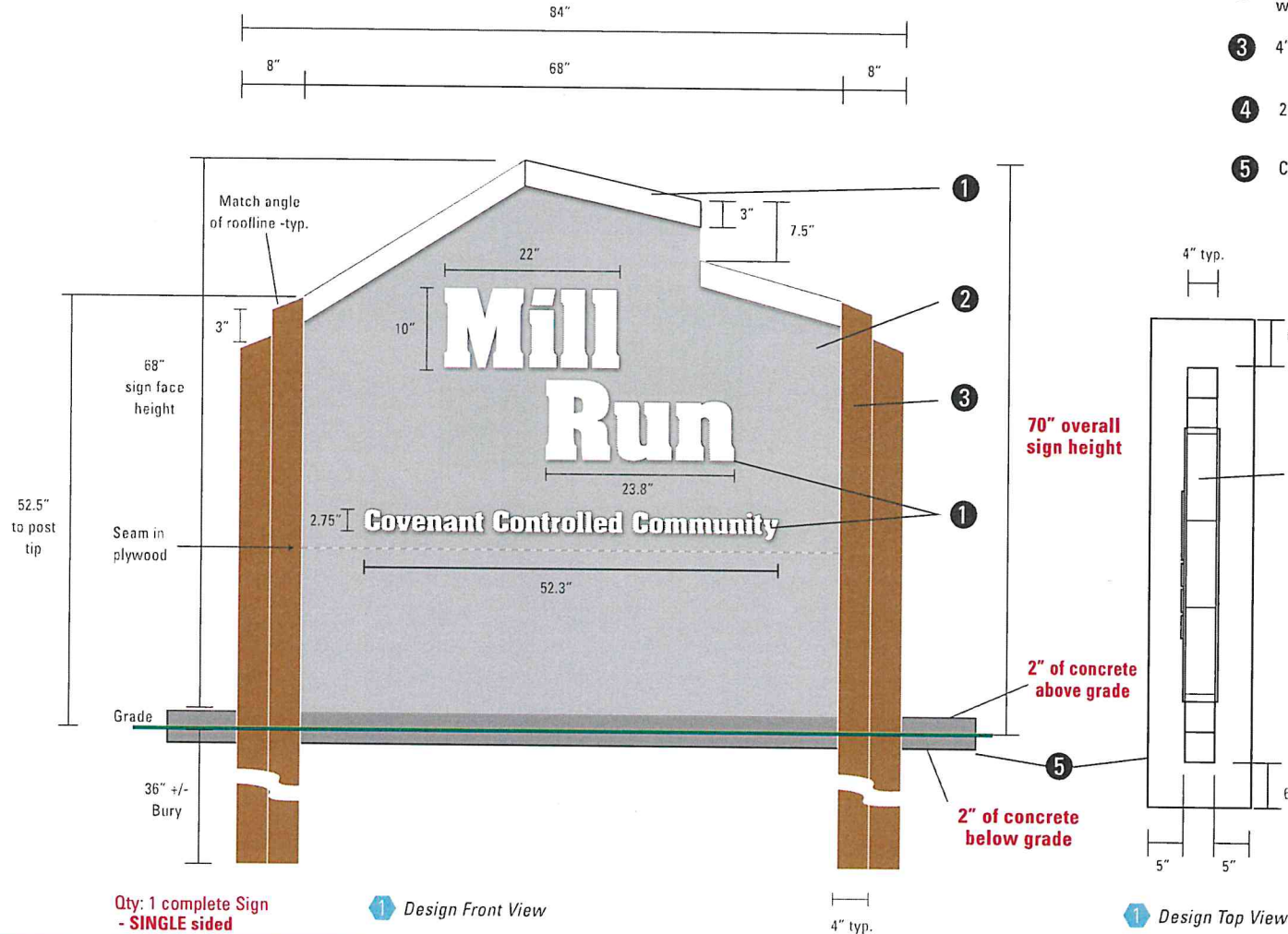
U.S. HOME - WITKIN DIVISION AURORA, COLORADO

DATE: 9-8-80  
REVISED: 9-15-80  
10-28-80  
11-80

CHRIS G. MORITZ, INC. LANDSCAPE ARCHITECTS  
6723 EAST EXPOSITION AVENUE, DENVER, COLORADO, 80234.

PROJECT NO. M-8024 SHEET NO. 3 OF 3

THE VILLAGE AT MILL RUN 90-4022-1



- ① 3/4" Plywood painted MP032071 White Wonder, flush mounted to face with countersunk screws or tack nails, heads painted to match
- ② 1/2" Plywood sign back painted Dapple Grey, flush mounted with countersunk screws, heads painted to match
- ③ 4" x 4" Treated Cedar, Natural wood color
- ④ 2 x 4" Treated Cedar lumber sign frame
- ⑤ Concrete pad to measure 96" x 14" x 4" deep



Color schedule:

<span style="display: inline-block; width: 20px; height: 20px; background-color: white; border: 1px solid black;"></span>	White Wonder MP 032071
<span style="display: inline-block; width: 20px; height: 20px; background-color: #808080; border: 1px solid black;"></span>	Dapple Grey MP 06681
<span style="display: inline-block; width: 20px; height: 20px; background-color: #8B4513; border: 1px solid black;"></span>	Natural wood

Qty: 1 complete Sign  
- SINGLE sided

① Design Front View

① Design Top View