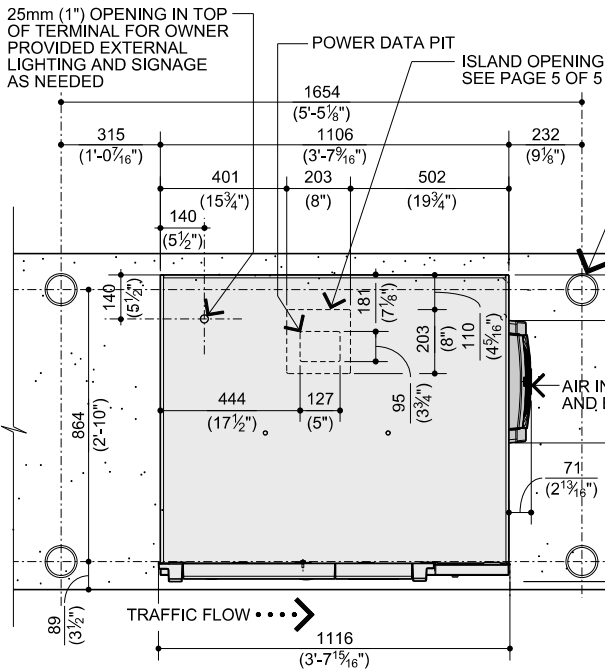


CONSULT WITH DIEBOLD INSTALLATION/SERVICE BRANCH
FOR ADDITIONAL DETAILS AND INFORMATION. PLEASE SEE
PLANNING AND SITE PREPARATION GUIDE TP-821814-001



FRONT VIEW

(4) GUARD POST PIPES TO BE 102mm (4") DIA. FILLED WITH CONCRETE (ALL BY OWNER'S GENERAL CONTRACTOR). 00-051019-000C GUARD POST SLEEVE (OPTIONAL EXTRA) SLIPS OVER 102mm (4") TO 114mm (4¹/₂") DIA. PIPE. MAXIMUM HEIGHT 1321mm (4'-4")

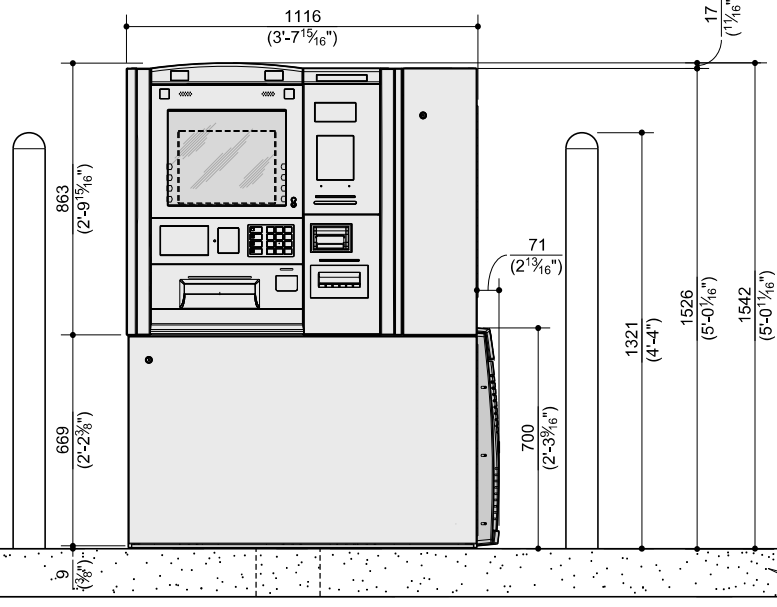
RECOMMENDED SIZE AND LOCATION FOR NEW CONSTRUCTION. EXISTING GUARD POST MAY OR MAY NOT NEED RELOCATED. LOCATION MUST NOT INTERFERE WITH SERVICE AREA REQUIREMENTS.

NOTE:

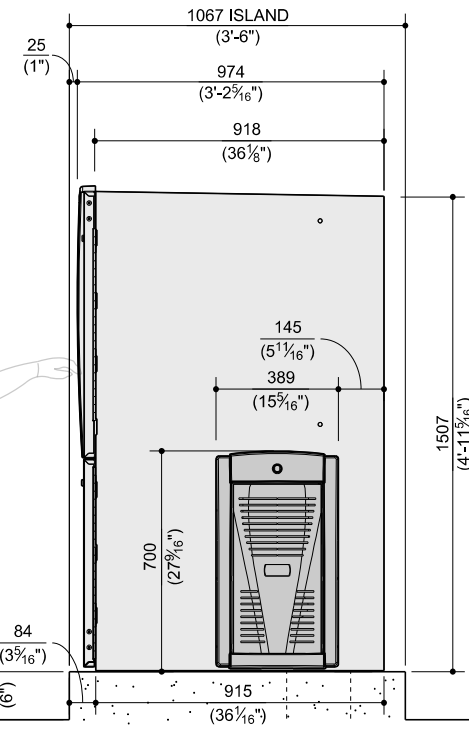
DIEBOLD ATMS ARE SPECIFICALLY DESIGNED TO MEET VARIOUS USER CRITERIA FOR DRIVE-UP AND WALK-UP APPLICATIONS INCLUDING REACH, PRIVACY AND SCREEN VIEW ABILITY. A DRIVE-UP ATM USED IN A WALK-UP APPLICATION MAY RESULT IN REDUCED USER PRIVACY. AN OPTIONAL KEYPAD PRIVACY SHIELD IS RECOMMENDED IN THIS APPLICATION.

THE CUSTOMER ACCEPTS ALL RESPONSIBILITY FOR ANY REDUCTION IN USER CONVENIENCE, VISIBILITY AND PRIVACY RISK ISSUES ASSOCIATED WITH USING DIEBOLD ATMS OUTSIDE OF THEIR INTENDED APPLICATIONS.

PLAN VIEW



FRONT VIEW



SIDE VIEW

POWER REQUIREMENTS:

THE ATM REQUIRES SINGLE-PHASE THREE WIRE UNSWITCHED POWER. WIRING TO THE ATM MUST USE A THIRD-WIRE EARTH GROUND (CONDUIT GROUND IS NOT ACCEPTABLE). THE POWER SUPPLIED MUST BE AS SPECIFIED BELOW.

CHOOSE AND SUPPLY THE PROPER POWER FOR THE SITE:

- ☐ 100-127 VAC (+6%, -10%) AT 50 (±1%) Hz, SINGLE-PHASE
- ☐ 100-127 VAC (+6%, -10%) AT 60 (±1%) Hz, SINGLE-PHASE
- ☐ 200-240 VAC (±10%) AT 50 (±1%) Hz, SINGLE-PHASE
- ☐ 200-240 VAC (±10%) AT 60 (±1%) Hz, SINGLE-PHASE

POWER TO THE ATM IS TO BE A DEDICATED SERVICE AND MUST BE PROTECTED BY A SAFETY QUICK-DISCONNECT DEVICE TO BREAK LINE VOLTAGE (SUCH AS A CIRCUIT BREAKER AT THE ELECTRICAL SERVICE PANEL). THE QUICK DISCONNECT DEVICE (OR CIRCUIT BREAKER) MUST TURN OFF THE LINE VOLTAGE AT THE AMPERAGE SPECIFIED BELOW.

100-127 VAC SERVICE, DISCONNECT AT 30 AMPERES
200-240 VAC SERVICE, DISCONNECT AT 15 AMPERES

POWER USAGE:

MACHINE STATUS	A
IDLE (NO TRANSACTION) (NO HEATER)	280 WATTS
IDLE (NO TRANSACTION) (WITH HEATER)	1800 WATTS
CASH DEPOSIT	350 WATTS
CASH DISPENSE	320 WATTS

TERMINAL CONFIGURATION:

- A** ActivCore HIGH END, 19" SVD, ActivDispense, ActivMedia, ActivEdge CARD READER, 80mm RECEIPT PRINTER, BATTERY PACK, REAR DISPLAY, JOURNAL PRINTER, CONTACTLESS CARD READER, LOWER CONTROL CARD, 7" DISPLAY, AND TASK LIGHTS.

THE POWER USE DEPENDS ON THE NUMBER AND TYPE OF DEVICES PRESENT IN THE TERMINAL, AND THE TYPE OF TRANSACTION THE TERMINAL IS PERFORMING.

HEAT OUTPUT CONFIGURATION:

- A** 955 - BTU/HR - IDLE (NO HEATER)
6138 - BTU/HR - IDLE (WITH HEATER)
1194 - BTU/HR - CASH DEPOSIT
1092 - BTU/HR - CASH DISPENSE

SPECIFICATIONS

OPERATING ENVIRONMENT:

-35° C TO 50° C (-31° F TO 122° F)
15% TO 100% RELATIVE HUMIDITY.

NOTE:

IF THE AVERAGE DAILY MAXIMUM TEMPERATURE IN ANY ONE MONTH EXCEEDS 40° C (104° F), THE EXTREME ENVIRONMENTAL KIT (AIR CONDITIONER) IS STRONGLY RECOMMENDED.

CANOPY REQUIREMENT:

IT IS RECOMMENDED THE UNIT BE PLACED UNDER COVER/CANOPY FOR OPERATOR/SERVICE AND SUN PROTECTION.

WEIGHT OF UNIT:

1,293kg (2,850 LBS.)

ALARM PROTECTION:

THE UL-LISTED SAFE IS EQUIPPED WITH A BASIC ALARM SENSOR PACKAGE. THE BASIC PACKAGE INCLUDES A SAFE DOOR OPEN SWITCH, ALARM SHUNTING SWITCH, AND RATE-OF-RISE HEAT SENSOR.

RECOMMENDED ISLAND:

1066mm (3'-6") WIDE X 152mm (6") HIGH X 203mm (8") MIN. THICKNESS

PHYSICAL SECURITY:

U.L. SAFE

THE SAFE MEETS THE REQUIREMENTS OF UL STANDARD 291 LEVEL 1 FOR AUTOMATED TELLER SYSTEMS FOR 24 HOUR SERVICE. THE SAFE DOOR IS PROVIDED WITH UL LISTED RELOCKING DEVICES AND A UL LISTED GROUP 1 ELECTRICAL LOCK WITH SINGLE OR DUAL COMBINATION LOCK. TO MEET REQUIREMENTS OF UL 291 THE UNIT MUST BE ANCHORED TO A CONCRETE PAD OF 152mm (6") MIN. THICKNESS USING ALL (4) OF THE 203mm (8") LONG WEDGE ANCHORS PROVIDED (DIEBOLD PART NUMBER 29-016376-000E, HILTI PART NUMBER 282520). INSTALL ANCHORS IN ACCORDANCE WITH INSTALLATION TEMPLATE 49-026655 (ALSO PROVIDED).

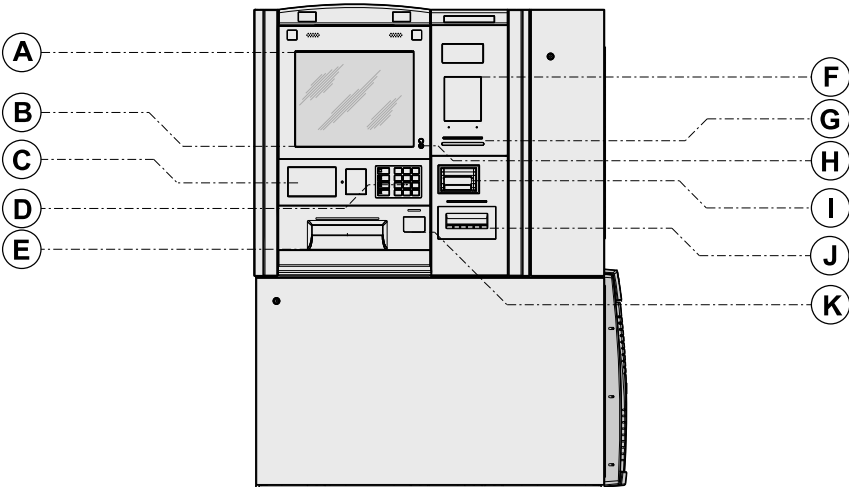
CEN L SAFE

THE SAFE MEETS THE REQUIREMENTS FOR EN 1143-1 CEN-L RESISTANCE GRADE FOR ATM SAFES. TO MEET REQUIREMENTS OF CEN L, THE UNIT MUST BE ANCHORED TO A CONCRETE PAD OF 152mm (6") MIN. THICKNESS USING ALL (4) OF THE 203mm (8") LONG WEDGE ANCHORS PROVIDED (DIEBOLD PART NUMBER 29-016376-000E, HILTI PART NUMBER 282520). INSTALL ANCHORS IN ACCORDANCE WITH INSTALLATION TEMPLATE 49-026655 (ALSO PROVIDED).

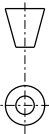
CONSUMER ACCESS DIMENSIONS

	HEIGHT	DEPTH
A TOP OF 19" CONSUMER DISPLAY	1543mm (60¾")	85mm (3⅜")
B BOTTOM OF CONSUMER DISPLAY	1238mm (48¾")	85mm (3⅜")
C ActivView OR ID SCANNER	1131mm (44½")	76mm (3")
D EPP KEY	1140mm (44⅞")	70mm (2¾")
E ActivCash	976mm (38⅞")	81mm (3⅜")
F 2D BARCODE SCANNER (OPTION)	1369mm (53⅞")	41mm (1⅝")
G RECEIPT PRINTER	1251mm (49¼")	41mm (1⅝")
H HEADPHONE JACK	1245mm (49")	72mm (2⅞")
I CARD READER	1127mm (44⅝")	41mm (1⅝")
J ActivMedia	996mm (39¼")	41mm (1⅝")
K COIN	971mm (38¼")	71mm (2⅞")

HEIGHT - FROM DRIVE LEVEL
DEPTH - FROM FRONT EDGE OF ISLAND



DIMENSIONS IN MILLIMETRES
(DIMENSIONS IN FEET-INCHES)

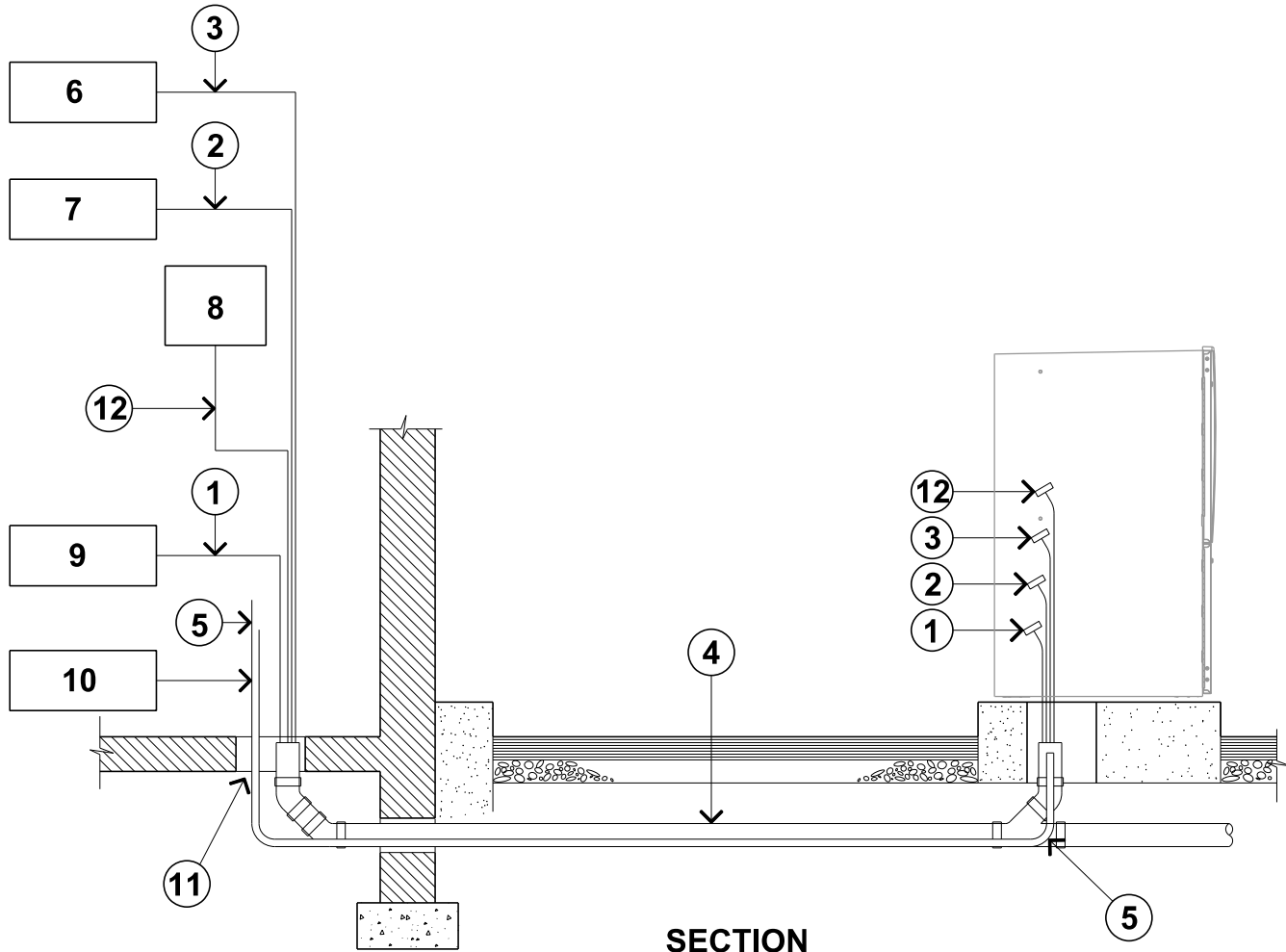


THIRD ANGLE
PROJECTION

DIMENSIONS IN MILLIMETRES
(DIMENSIONS IN FEET-INCHES)



PAGE 3 OF 5



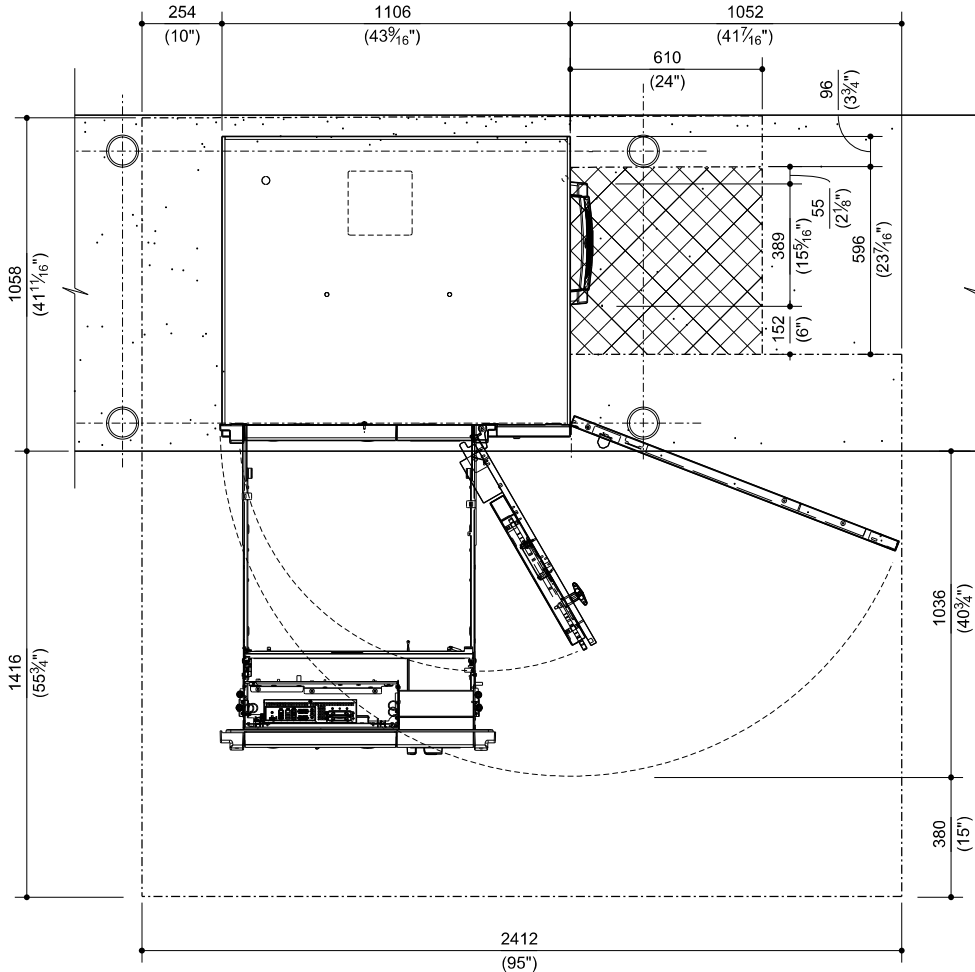
SECTION

1. COMMUNICATIONS CABLE-DIEBOLD TO FURNISH (OPTIONAL AND EXTRA) RJ-45 CABLE TO BE INSTALLED BY THE OWNER.
2. VIDEO SURVEILLANCE SYSTEM CABLE-FURNISHED AND INSTALLED BY OWNER.
3. ALARM CABLE-TO CONFORM TO GRADE A REQUIREMENTS, ALARM CABLE MUST BE HOME RUN FROM THE ATM BACK TO THE ALARM CONTROL CABINET, FURNISHED AND INSTALLED BY OWNER.
4. 102mm (4") DIAMETER PVC PIPE-FURNISHED AND INSTALLED BY OWNER.
5. ELECTRICAL POWER CONDUIT-FURNISHED AND INSTALLED BY OWNER.
6. ALARM.
7. VIDEO SURVEILLANCE SYSTEM.
8. OPTIONAL REMOTE STATUS INDICATOR (RSI).
9. TO NETWORK
10. ELECTRICAL CONDUIT TO BUILDINGS ELECTRICAL PANEL.
11. FLOOR OPENING FOR CABLES (RECOMMENDED TO BE IN THE ELECTRICAL EQUIPMENT ROOM).
12. AFTER HOUR DEPOSITORY CABLING.
13. RSI CABLING - FURNISHED BY DIEBOLD AND INSTALLED BY OWNER.

DIEBOLD® 7790 ADVANCED FUNCTION DRIVE-UP ISLAND ATM SERVICE POSITION AND SERVICE AREAS

DIMENSIONS IN MILLIMETRES
(DIMENSIONS IN FEET-INCHES)

THIRD ANGLE
PROJECTION



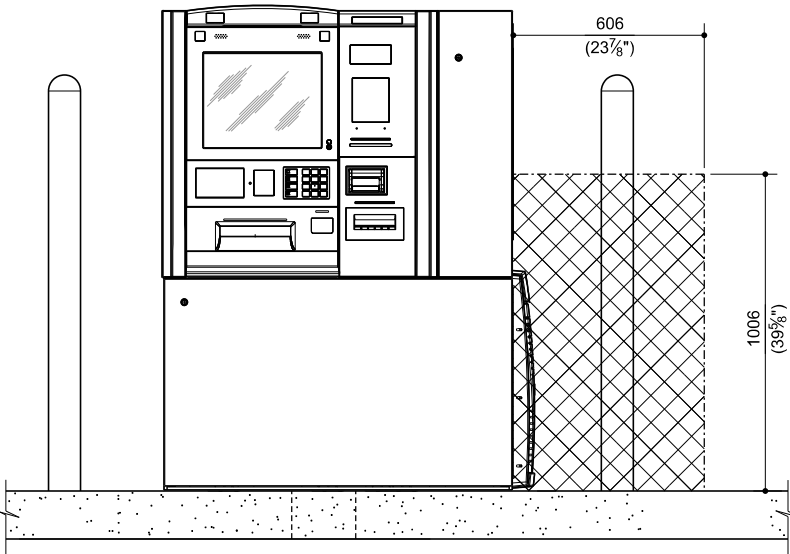
MINIMUM SERVICE AREA
FOR ENVIRONMENTAL KIT

PLAN VIEW
SERVICE AREA

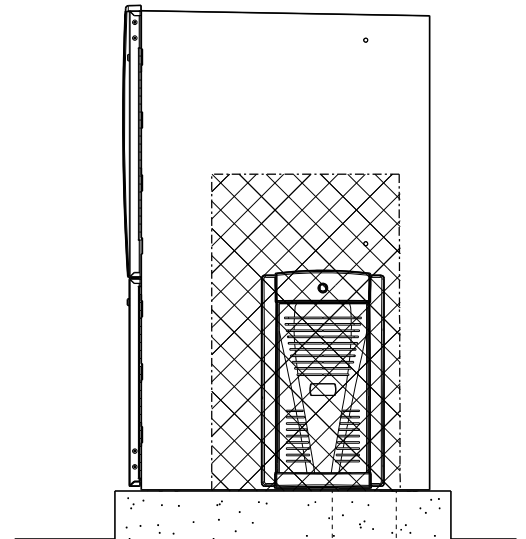
PAGE 4 OF 5

*ALL DIMENSIONS AND DESIGN CRITERIA
SUBJECT TO CHANGE WITHOUT NOTICE*

FILE NO. 177-662 REV. 1



FRONT VIEW



SIDE VIEW

ISLAND REQUIREMENTS

NOTES:

NEW CONSTRUCTION:

- OWNER'S E.C. TO FURNISH AND INSTALL (1) 19mm ($\frac{3}{4}$ ") RIGID CONDUIT FOR ELECTRICAL POWER. (SEE POWER REQUIREMENTS)
- OWNER'S E.C. TO FURNISH AND INSTALL 102 mm (4") P.V.C. PIPE (RECOMMENDED METHOD FOR ROUTING COMMUNICATION CABLE, EXPRESS BUS CABLE, ALARM CABLE, AND VIDEO CABLE).
(ALTERNATE METHOD) OWNER'S ELECTRICAL CONTRACTOR TO FURNISH AND INSTALL (1) 25mm (1") RIGID CONDUIT FOR ALARM CABLE AND (1) 38mm (1 $\frac{1}{2}$ ") RIGID CONDUIT FOR COMMUNICATION CABLE, EXTERNAL OPTIONS CABLE, AND VIDEO CABLE.
- PLEASE CONTACT THE DIEBOLD INSTALLING BRANCH IF CONSIDERING ATTACHMENT OF A REMOTE DESKTOP MONITOR/KEYBOARD TO THIS PRODUCT.
- OWNER'S INSTALLER TO DRILL (4) 19mm ($\frac{3}{4}$ ") DIA. X 203mm (8" MIN.) DEEP HOLES IN ISLAND CONCRETE SLAB (RECOMMENDED COMPLETELY THROUGH ISLAND SLAB WHEN POSSIBLE) (TEMPLATE PROVIDED FOR LOCATING HOLES, PART NO. 49-026655) AND SECURE UNIT TO ISLAND WITH (4) 19mm ($\frac{3}{4}$ ")-10 X 203mm (8") LONG WEDGE ANCHORS (DIEBOLD PART NUMBER 29-016376-000E, HILTI PART NUMBER 282520) SUPPLIED WITH UNIT.
- ISLAND TO BE FLAT AND LEVEL IN AREA OF UNIT.
- ISLAND CONSTRUCTION MUST SUPPORT WEIGHT OF UNIT 1,293 kg (2,850 LBS.).
- OWNER'S INSTALLER TO SET LEVEL, SECURE UNIT TO CONCRETE ISLAND AND CAULK AROUND BASE.

EXISTING CONSTRUCTION:

- EXISTING ELECTRICAL CONDUIT, PNEUMATIC TUBE AND/OR P.V.C. PIPE MUST BE RE-ROUTED TO ALIGN WITH REQUIRED ISLAND OPENING. EXISTING PNEUMATIC TUBE OR P.V.C. PIPE MAY BE USED TO ROUTE COMMUNICATION CABLE, EXPRESS BUS CABLE, ALARM CABLE, AND VIDEO CABLE.
- EXISTING BUMPER GUARDS ON ISLAND MAY REQUIRE RELOCATION.

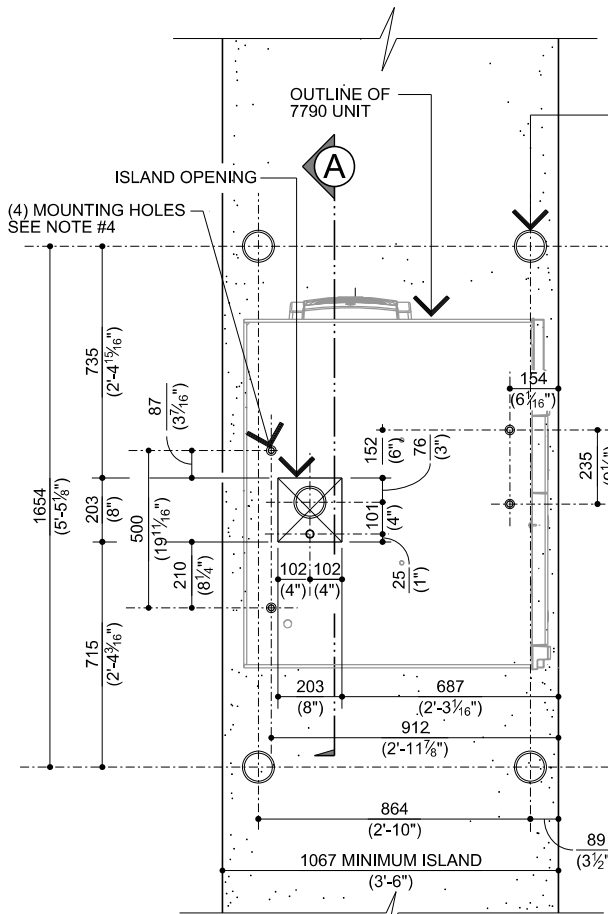
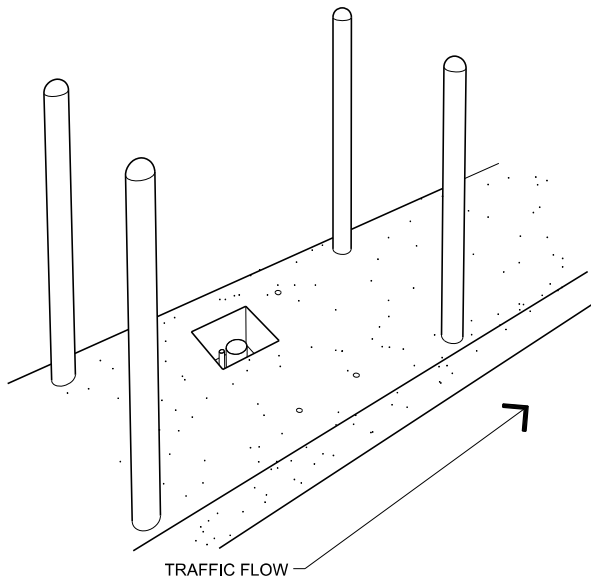
DIMENSIONS IN MILLIMETRES
(DIMENSIONS IN FEET-INCHES)

THIRD ANGLE
PROJECTION

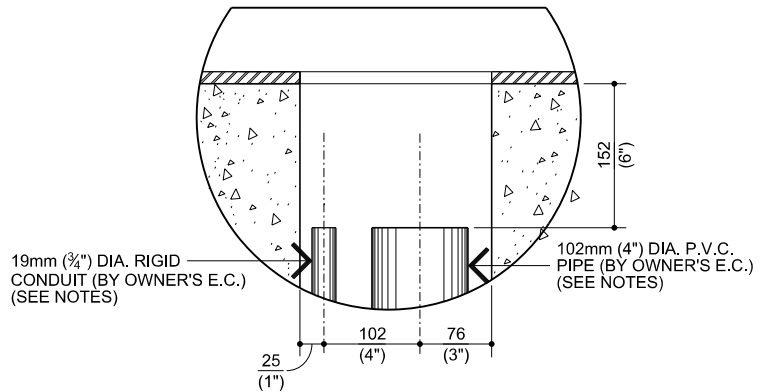
PAGE 5 OF 5

"ALL DIMENSIONS AND DESIGN CRITERIA
SUBJECT TO CHANGE WITHOUT NOTICE"

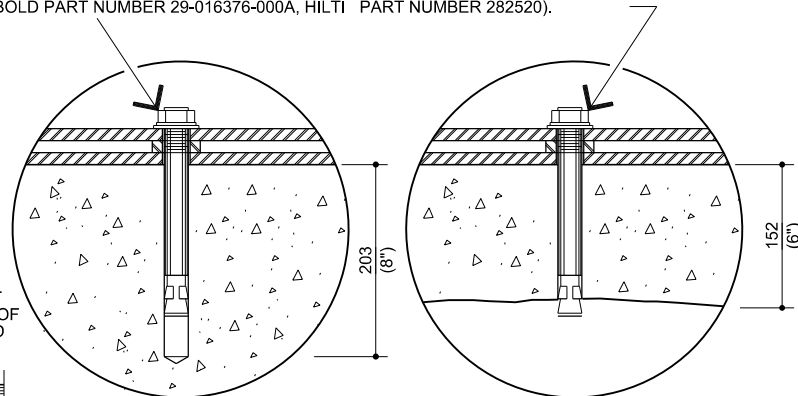
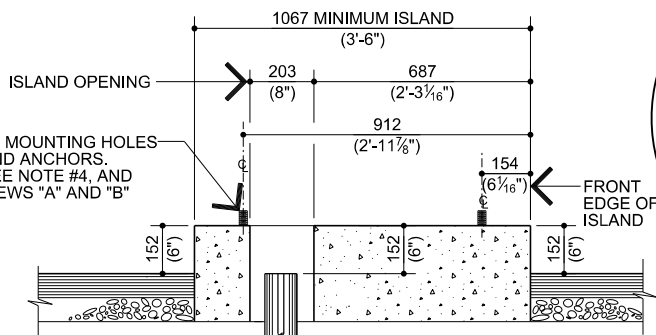
FILE NO. 177-662 REV. 1



- (4) GUARD POST PIPES TO BE 102mm (4") DIA. FILLED WITH CONCRETE (ALL BY OWNER'S GENERAL CONTRACTOR). 00-051019-000C GUARD POST SLEEVE (OPTIONAL EXTRA) SLIPS OVER 102mm (4") TO 114mm (4 $\frac{1}{2}$ ") DIA. PIPE. MAXIMUM HEIGHT 1321mm (4'-4").
- RECOMMENDED SIZE AND LOCATION FOR NEW CONSTRUCTION. EXISTING GUARD POST MAY OR MAY NOT NEED RELOCATED. LOCATION MUST NOT INTERFERE WITH SERVICE AREA REQUIREMENTS.



OWNER'S INSTALLER TO DRILL (4) 19mm ($\frac{3}{4}$ ") DIA. X 203mm (8" MIN.) DEEP HOLES IN ISLAND CONCRETE SLAB (RECOMMENDED DRILLING COMPLETELY THROUGH ISLAND SLAB WHEN POSSIBLE) (A TEMPLATE USED TO LOCATE THE HOLES, DIEBOLD PART NUMBER 49-205381 IS PROVIDED) AND TO BE SECURED TO THE CONCRETE ISLAND WITH (4) 19mm ($\frac{3}{4}$ ")-10 X 203mm (8") LONG WEDGE ANCHORS (SUPPLIED WITH UNIT, DIEBOLD PART NUMBER 29-016376-000A, HILTI PART NUMBER 282520).

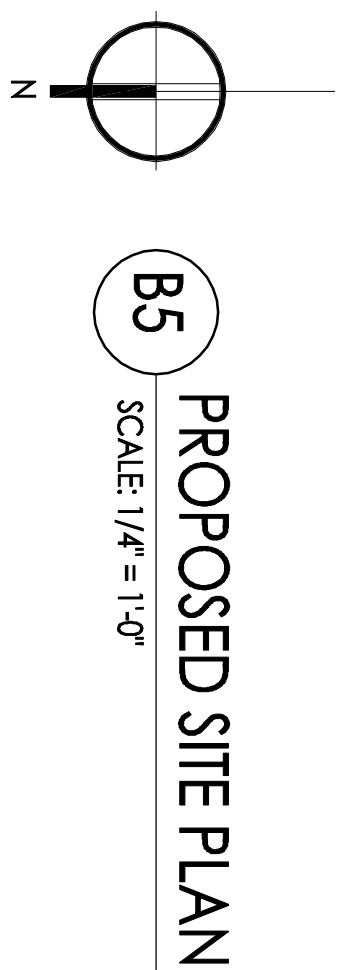


SECTION

MINIMUM HOLE DEPTH 203mm (8")

THROUGH HOLE

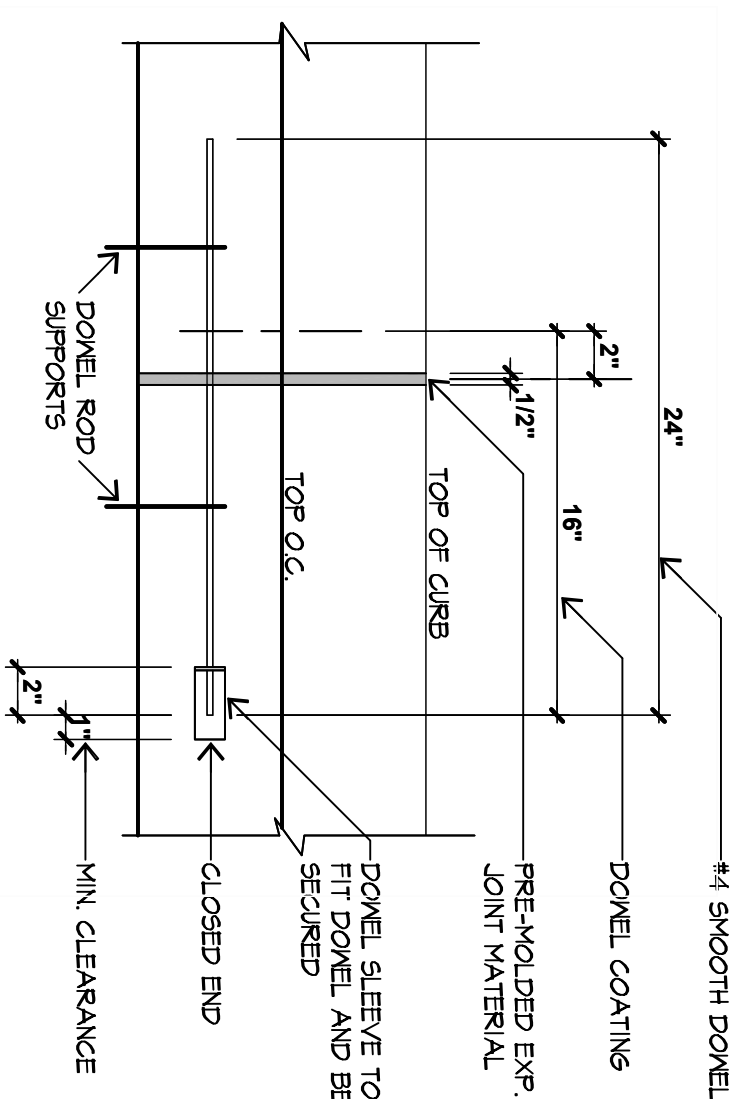
WAL-MART PARKING LOT
EXISTING CONCRETE PAVING TO REMAIN



B5
SCALE: 1/4" = 1'-0"

APPROXIMATE SQUARE FOOTAGE

1. CONTRACTOR TO MATCH ALL EXISTING PAVEMENT ELEVATIONS. ALL PROPOSED ISLANDS TO BE 6" ABOVE EXISTING PAVEMENT. NEW WORK TO BE DONE WITHIN ATM PROPERTY LINE.
2. ONE CALL NOTIFICATION SYSTEM, CALL BEFORE YOU DIG!!!
3. PROJECT REQUIRES MEETS AND BOUNDS SURVEY BY OTHERS WHEN PROJECT HAS BEEN LOCATED IN FIELD.



A5
SCALE: 1 1/2" = 1'-0"

A4
SCALE: 1 1/2" = 1'-0"

A3
SCALE: 1 1/2" = 1'-0"

A2
SCALE: 1 1/2" = 1'-0"

SCALE: 1 1/2" = 1'-0"

GARCIA DESIGN | ASSOCIATES

8955 Katy Freeway, Suite 106
Houston, Texas 77024
T 713 686 6060
F 713 686 6063

www.gdaoffice.com

Consultants:

Sheet Name
PROPOSED SITE PLAN

Sheet Number

S2.0

