

# Exhibit A

Page 1 of 2

## Easement Description

A portion of Lot 1, Block 1, TOWER CENTER FOR INDUSTRY SUBDIVISION FILING NO. 3 recorded August 25, 1981 at Reception Number 1981020340114 of the Adams County records, located in the northeast quarter of Section 33, Township 3 South, Range 66 West of the Sixth Principal Meridian, City of Aurora, Adams County, Colorado, described as follows:

Note:

1. The Basis of Bearings is the north line of the northeast quarter of Section 33, T3S, R66W 6th P.M. as monumented with an aluminum cap PLS 25933 at the west end and an brass cap PLS 16419 at the east end and is assumed to bear N 89°41'11" E.

Commencing at the north quarter corner of said Section 33, an aluminum cap PLS 25933; Thence S 82°57'50" E a distance of 1723.73 feet to the north line of said Lot 1 and the POINT OF BEGINNING;

Thence S 83°27'59" E, along said north line, a distance of 23.00 feet;

Thence S 06°30'48" W a distance of 55.15 feet;

Thence S 45°26'40" E a distance of 148.82 feet;

Thence N 89°22'05" E a distance of 211.05 feet;

Thence S 00°37'55" E a distance of 235.29 feet;

Thence N 89°46'55" W a distance of 23.00 feet;

Thence N 00°37'55" W a distance of 211.95 feet;

Thence S 89°22'05" W a distance of 756.19 feet to an easterly parcel line of that easement described in instrument recorded February 8, 1982 at Reception Number 1982020363901 of the Adams County records;

Thence N 00°37'55" W, along said easterly parcel line and easterly parcel line extended northerly, a distance of 23.00 feet;

Thence N 89°22'05" E a distance of 535.72 feet;

Thence N 45°26'40" W a distance of 116.29 feet;

Thence S 44°22'05" W a distance of 116.67 feet to a herein previously described course;

Thence S 89°22'05" W, along said previously described course, a distance of 32.53 feet;

Thence N 44°22'05" E a distance of 142.45 feet;

Thence N 06°30'48" E a distance of 62.92 feet to the north line of said Lot 1 and the POINT OF BEGINNING.

Containing 0.699 Acres acres more or less.

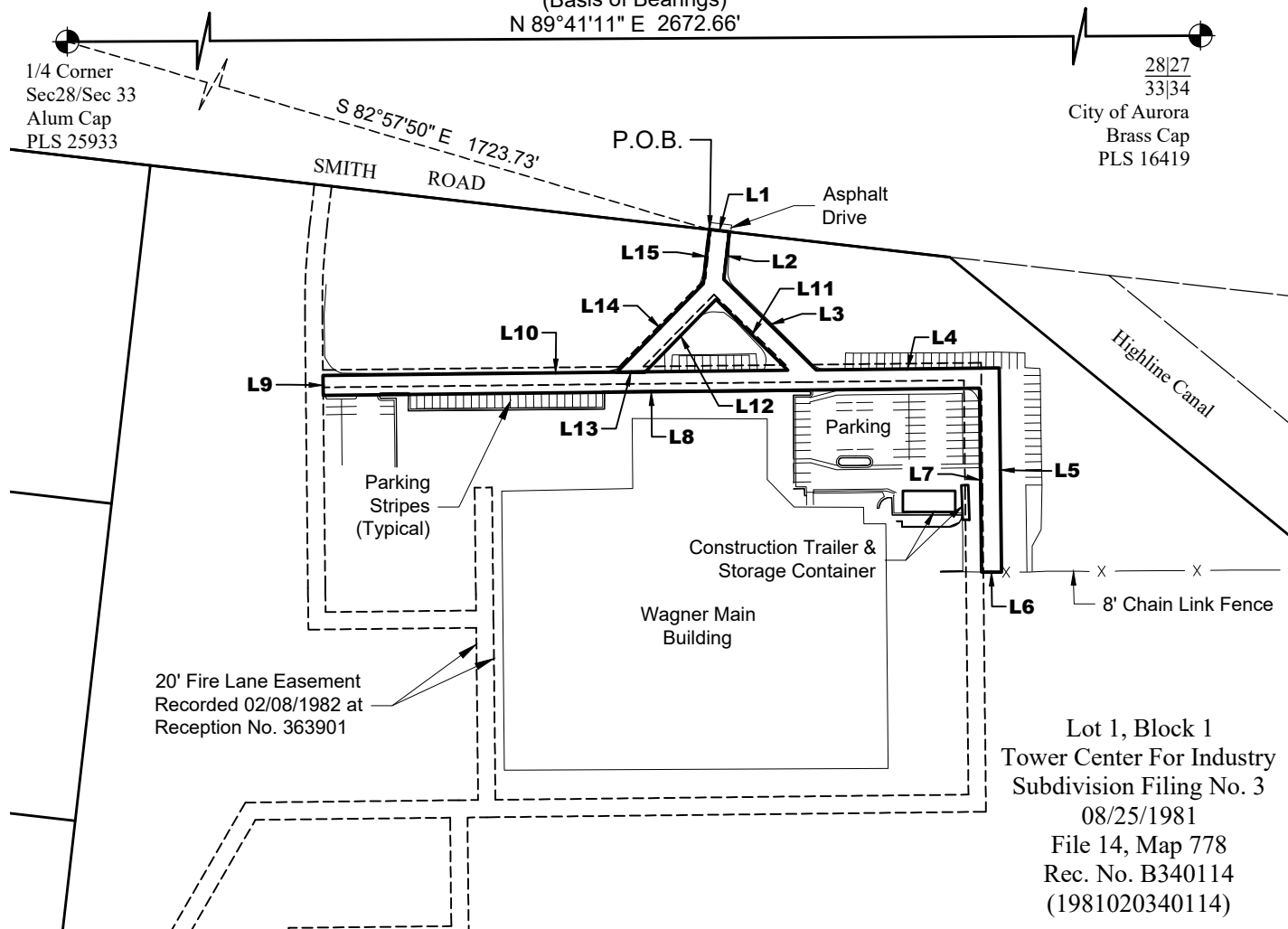
Prepared by Joel T. Vogt  
For and on behalf of Topographic CO.  
520 Stacy Ct. Ste B, Lafayette, CO 80026



# Exhibit A

Page 2 of 2

(Basis of Bearings)  
N 89°41'11" E 2672.66'



LINE	BEARING	DISTANCE
L1	S 83°27'59" E	23.00'
L2	S 06°30'48" W	55.15'
L3	S 45°26'40" E	148.82'
L4	N 89°22'05" E	211.05'
L5	S 00°37'55" E	235.29'
L6	N 89°46'55" W	23.00'
L7	N 00°37'55" W	211.95'
L8	S 89°22'05" W	756.19'
L9	N 00°37'55" W	23.00'
L10	N 89°22'05" E	535.72'
L11	N 45°26'40" W	116.29'
L12	S 44°22'05" W	116.67'
L13	S 89°22'05" W	32.53'
L14	N 44°22'05" E	142.45'
L15	N 06°30'48" E	62.92'



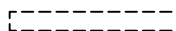
North



## Legend



Proposed Easement



Existing Easement  
(Portions To Be Vacated;  
See Exhibit B)