

## PROJECT INFORMATION




## SITE PHOTO

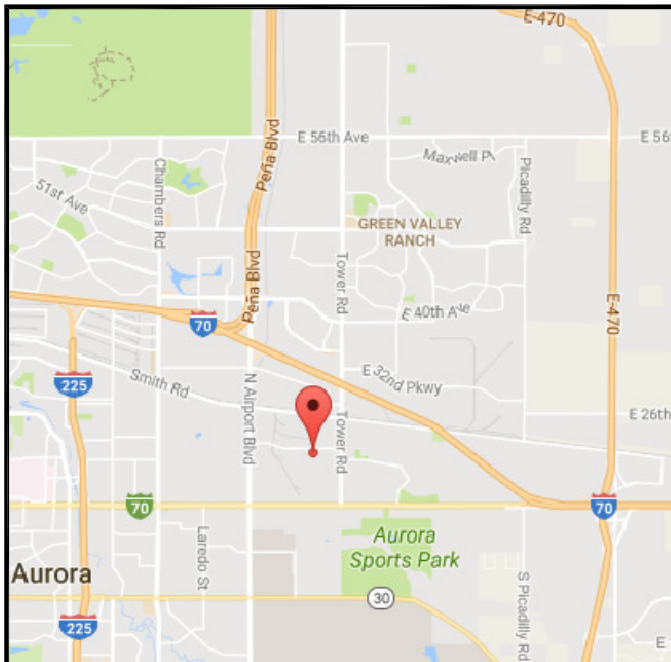


E	06-20-17	FINAL ZONING
D	06-01-17	FINAL ZONING
C	05-03-17	ZONING
B	04-11-17	ZONING
A	04-04-17	ZONING
REV	DATE	ISSUED FOR:

DRAWN BY: KES	CHECKED BY: ARB
---------------	-----------------

A rectangular stamp with a double border, tilted at an angle. The text "ZONING REVIEW" is written in bold, black, sans-serif capital letters, centered within the stamp.

SHEET NUMBER: <b>T-1</b>	REVISION: <b>E</b>
	TEP #: 76788.68828



## LOCATION MAP

FROM VZW OFFICES-TAKE I-225 NORTH FOR APPROXIMATELY 7.5 MILES. TAKE EXIT 12B TO MERGE ONTO I-70 EAST TOWARD LIMON. DRIVE FOR APPROXIMATELY 3.1 MILES THEN TAKE EXIT 286 FOR TOWER ROAD. TURN RIGHT ONTO TOWER ROAD AND DRIVE FOR APPROXIMATELY 0.9 MILES TO EAST 22ND AVENUE. TURN RIGHT ONTO EAST 22ND AVENUE AND THE SITE WILL BE ON THE LEFT AFTER APPROXIMATELY 0.2 MILES.

## DRIVING DIRECTIONS

**NAME:** TOWER ENGINEERING PROFESSIONALS  
**ADDRESS:** 5545 W 56TH AVE, UNIT E  
**CITY, STATE, ZIP:** ARVADA, CO 80002  
**CONTACT:** TIMOTHY L. FISH, P.L.S.  
**PHONE:** (303) 566-9914

## CODE COMPLIANCE

**NAME:** CROWN CASTLE  
**CONTACT:** MARY CLAIRE RAMUSSEN  
**PHONE:** (480) 735-6904

## CONTACT INFORMATION

[illegible]

## INDEX OF SHEETS

LEGEND

EXIST. PROPERTY LINE

ADJ. PROPERTY LINE

PROPERTY CORNER

TELCO PEDESTAL

RIGHT-OF-WAY

UNDERGROUND WIRE

UNDERGROUND GAS

UNDERGROUND FIBER

UNDERGROUND TELCO

WATER PIPE

EDGE OF PAVEMENT

CHAIN LINK FENCE

LEASE AREA/EASMENT CORNER

TRANSFORMER

LIGHT POLE

GAS VALVE

WATER VALVE

SITE COORDINATES

LATITUDE: N 39° 44' 54.93" (NAD '83)

LONGITUDE: W 104° 46' 40.87" (NAD '83)

GROUND ELEVATION: 5438' (NAVD '88)

NOTES:

1. THE BASIS OF THE MERIDIANS AND COORDINATES FOR THIS PLAT IS THE COLORADO STATE PLANE COORDINATE SYSTEM, NORTH AMERICAN DATUM 1983 (NAD83).

2. VERTICAL INFORMATION SHOWN, BASED ON THE NORTH AMERICAN VERTICAL DATUM OF 1988 (NAVD 88).

3. ALL DISTANCES ARE GROUND UNLESS OTHERWISE NOTED.

4. THE TOWER IS LOCATED IN AN AREA DESIGNATED AS ZONE X. AREAS OUTSIDE OF 0.2% ANNUAL FLOOD CHANCE (FEMA MAP # 08005C0182K).

5. EXISTING EASEMENTS NOT APPLICABLE TO PROPOSED TELECOMMUNICATIONS SITE ARE SHADED FOR CLARITY.

The diagram is a detailed site plan for a telecommunications tower. It shows the intersection of E 22nd Avenue and a property line. Various utility lines are marked: UGW (Underground Wire), UGF (Underground Gas), UGT (Underground Telco), and WP (Water Pipe). A proposed 12'-wide access & utility easement is shown. A proposed 10'x20' lease area is indicated by a dashed line. A proposed 5'-wide utility easement is also shown. The plan includes labels for existing features like signs, electrical meters, and handholes. A north arrow is located in the top right corner, and a scale bar (0 to 60 feet) is in the bottom right corner. The plan is titled 'SITE PLAN' and 'Z-1'.

PLANS PREPARED FOR:

verizon

3131 SOUTH VAUGHN WAY, SUITE 550  
AURORA, CO 80014  
OFFICE: (303) 489-7836

PROJECT INFORMATION:

DEN MURICA

18000 EAST 22ND AVENUE, UNIT B  
AURORA, CO 80011  
(ADAMS COUNTY)

PLANS PREPARED BY:

**TOWER ENGINEERING PROFESSIONALS**  
5545 W. 56TH AVE., UNIT E  
ARVADA, CO 80002  
OFFICE: (303) 566-9914  
www.tepgroup.net

SEAL:

ZONING REVIEW

E	06-20-17	FINAL ZONING
D	06-01-17	FINAL ZONING
C	05-03-17	ZONING
B	04-11-17	ZONING
REV	DATE	ISSUED FOR:

DRAWN BY: KES    CHECKED BY: ARB

SHEET TITLE:

SITE PLAN

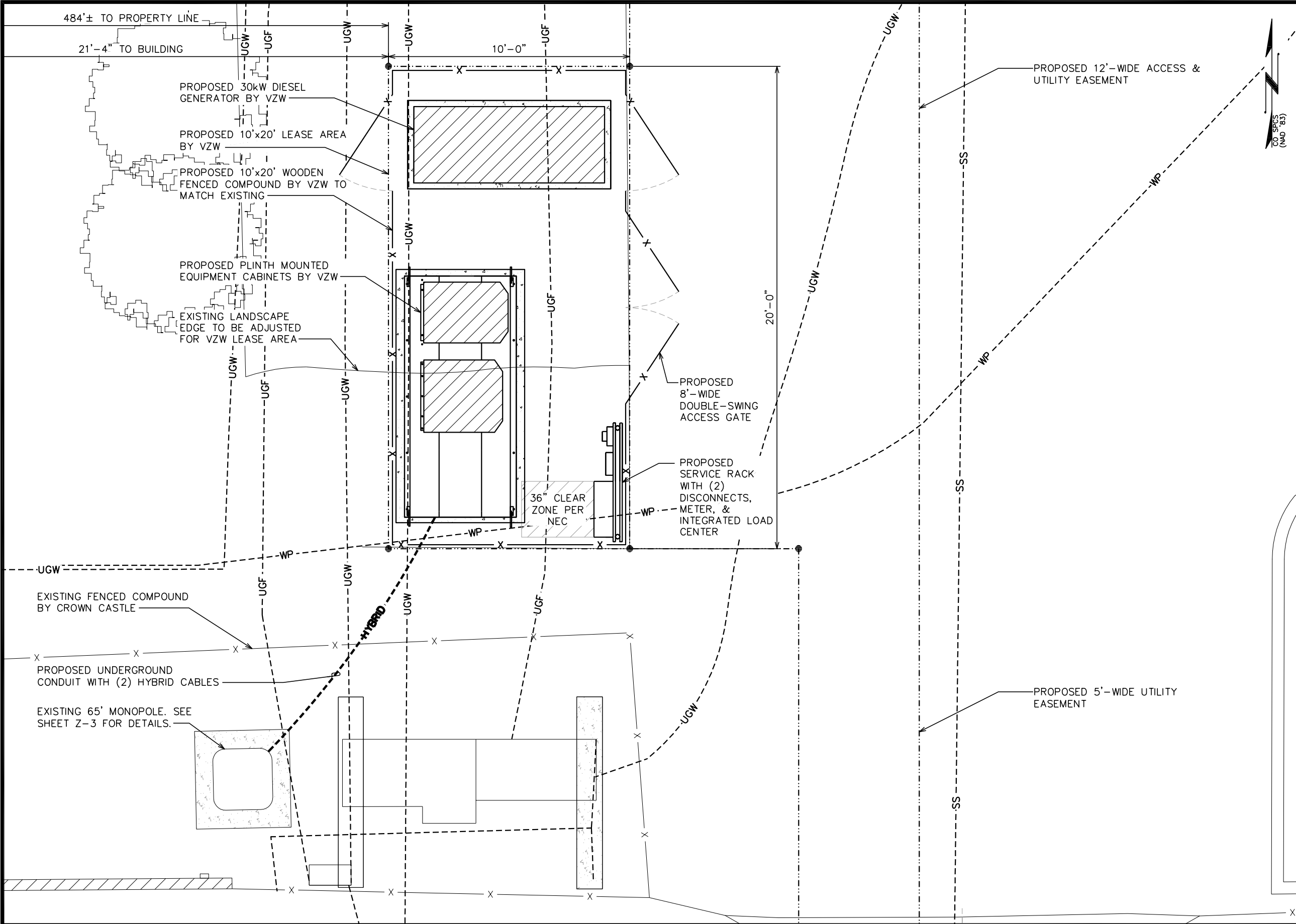
SHEET NUMBER:

Z-1

REVISION:

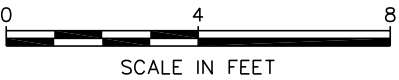
E

TEP #:76788.68828



**COMPOUND PLAN**

SCALE: 1/4" = 1'-0"



PLANS PREPARED FOR:



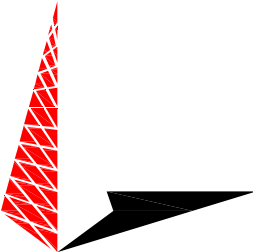
3131 SOUTH VAUGHN WAY, SUITE 550  
AURORA, CO 80014  
OFFICE: (303) 489-7836

PROJECT INFORMATION:

**DEN MURICA**

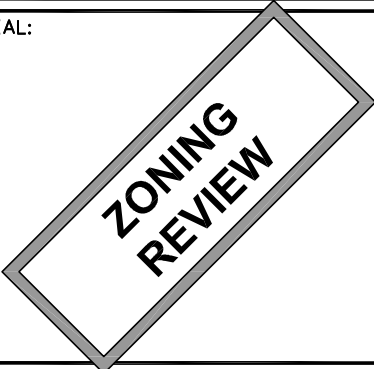
18000 EAST 22ND AVENUE, UNIT B  
AURORA, CO 80011  
(ADAMS COUNTY)

PLANS PREPARED BY:



**TOWER ENGINEERING PROFESSIONALS**  
5545 W. 56TH AVE., UNIT E  
ARVADA, CO 80002  
OFFICE: (303) 566-9914  
www.tepgroup.net

SEAL:



E	06-20-17	FINAL ZONING
D	06-01-17	FINAL ZONING
C	05-03-17	ZONING
B	04-11-17	ZONING
REV	DATE	ISSUED FOR:

DRAWN BY: KES CHECKED BY: ARB

SHEET TITLE:

**COMPOUND DETAILS**

SHEET NUMBER:

**Z-2**

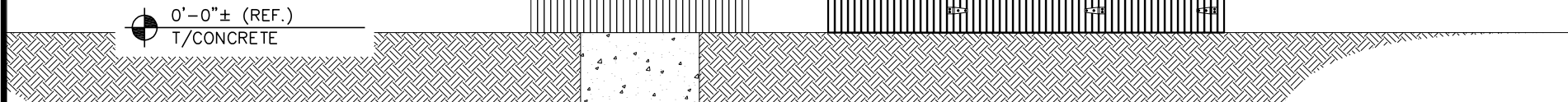
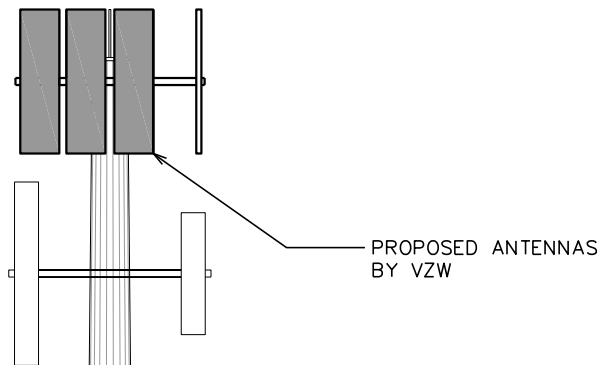
REVISION:

**E**

TEP #76788.68828

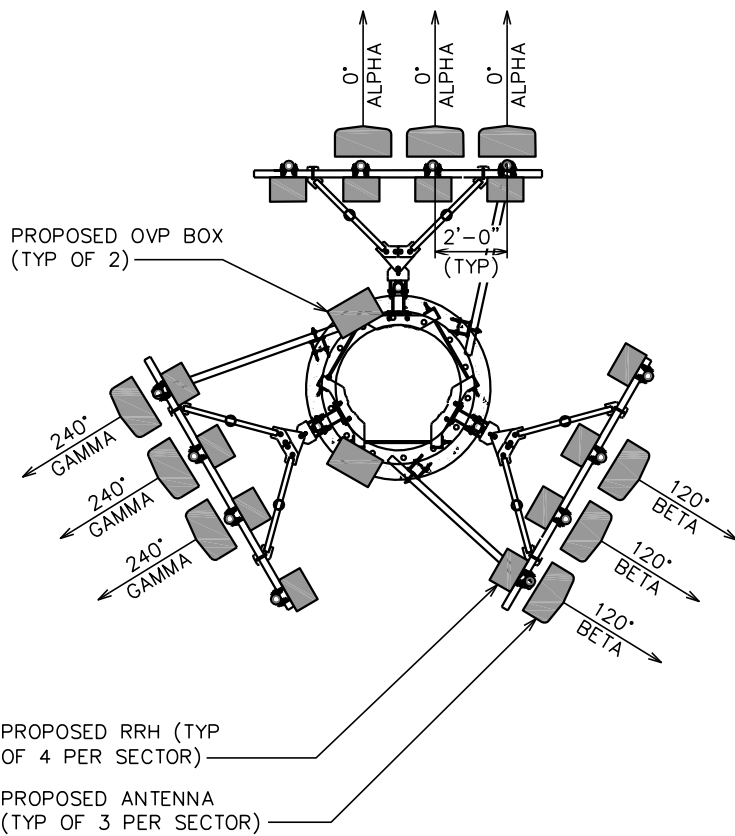


- 67'-0"±  
T/LIGHTNING ROD
- 67'-0"±  
T/PROPOSED ANTENNAS
- 65'-0"±  
T/TOWER
- 64'-0"±  
CL/PROPOSED ANTENNAS
- 56'-0"±  
CL/EXISTING ANTENNAS



TOWER ELEVATION

SCALE: 1/8" = 1'-0"



ANTENNA LAYOUT

SCALE: N.T.S.



PLANS PREPARED FOR:  
**verizon**  
3131 SOUTH VAUGHN WAY, SUITE 550  
AURORA, CO 80014  
OFFICE: (303) 489-7836

PROJECT INFORMATION:  
**DEN MURICA**  
18000 EAST 22ND AVENUE, UNIT B  
AURORA, CO 80011  
(ADAMS COUNTY)

PLANS PREPARED BY:  
  
**TOWER ENGINEERING PROFESSIONALS**  
5545 W. 56TH AVE., UNIT E  
ARVADA, CO 80002  
OFFICE: (303) 566-9914  
www.tepgroup.net

SEAL:  
**ZONING REVIEW**

E	06-20-17	FINAL ZONING
D	06-01-17	FINAL ZONING
C	05-03-17	ZONING
B	04-11-17	ZONING
REV	DATE	ISSUED FOR:

DRAWN BY: KES    CHECKED BY: ARB

SHEET TITLE:  
**TOWER ELEVATION**

SHEET NUMBER: <b>Z-3</b>	REVISION: <b>E</b> TEP #76788.68828
-----------------------------	---

