

- Notes:**
1. Refer to Plant List (Sheet LD3) for all planting.
 2. For Local Street Tree Planting Program refer to Sheet LP18.
 3. For Relocated & Replacement Trees refer to Sheets TP1-TP10 of the Tree Protection Plan by PCS Group CSP #6.
 4. Unless otherwise noted, Replacement trees will be 10' Tall Ponderosa Pines with a caliper mitigation value equal to 5".
 5. All mitigated trees are in addition to the City of Aurora Buffer & Streetscape Requirements.
 6. Street trees located within sight distance triangles or within 50' of a yield or stop sign are to be pruned so that the lowest limb is a minimum of 7' above the ground.

LEGEND

- Replacement Tree (See Sheet TP1)
- Relocated Tree (See Sheet TP1)
- Existing Tree
- Deciduous Tree
- Evergreen Tree
- Ornamental Tree
- Evergreen Shrub
- Deciduous Shrub
- Perennial
- Ornamental Grass
- Vines/Climbers
- 90/10 Fescue Bluegrass Sod
- Low Native Grass Seed
- Grass-Flower Seed
- Tall Native Grass Seed
- Dryland Revegetation Seed Mix
- Detention/Floodplain Revegetation Seed Mix
- Solid Privacy Fence
- Three Rail Fence
- Temporary Fence
- Fire Hydrant

Scale: 1"=30'-0"

0 15 30 60

PREPARED FOR:
CalAtlantic Homes
6161 S. Syracuse Way,
Suite 200
Greenwood Village, CO.
80111
tel 303.486.5000

LAND PLANNING
PCS
GROUP Inc.
1001 16th St. B-180
Denver, CO 80265
tel 303.531.4905

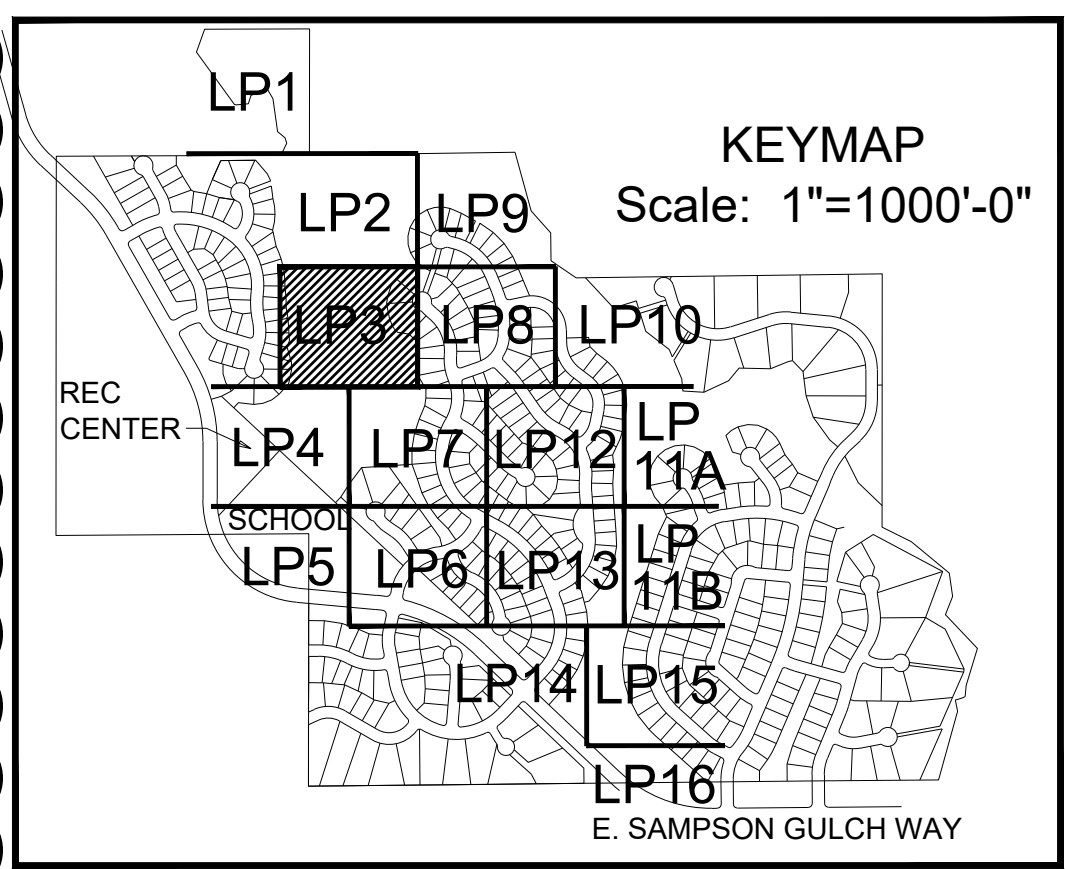
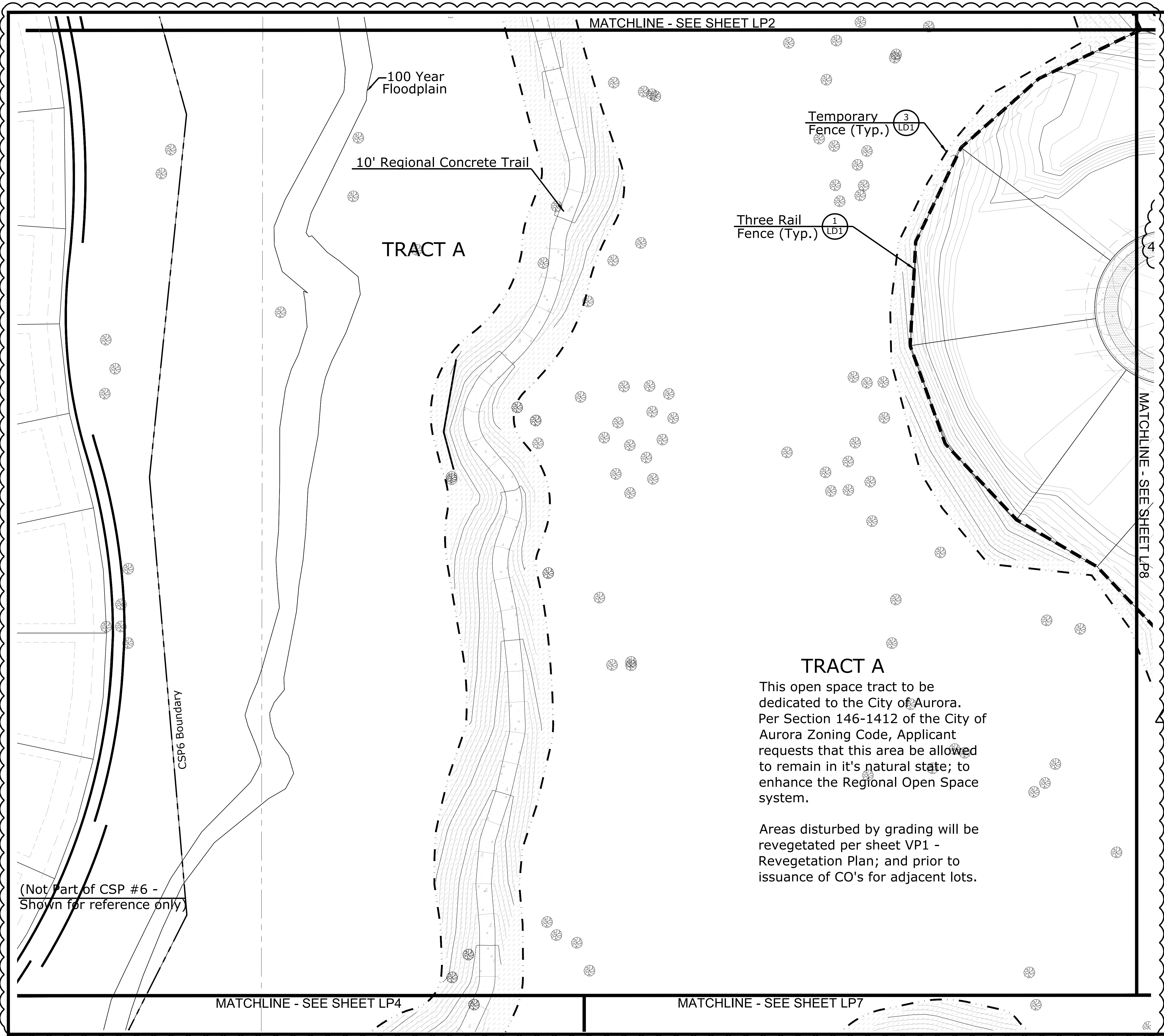
Whispering Pines
Aurora, Colorado

CSP #6 - LANDSCAPE PLAN

Drawn by: JW
Checked by: JP
Issue Date: 12.2.14
Revision: 6.07.18
Extension:

SHEET NAME
Landscape Plan

SHEET NUMBER
LP2



- Notes:**
1. Refer to Plant List (Sheet LD3) for all planting.
 2. For Local Street Tree Planting Program refer to Sheet LP18.
 3. For Relocated & Replacement Trees refer to Sheets TP1-TP10 of the Tree Protection Plan by PCS Group CSP #6.
 4. Unless otherwise noted, Replacement trees will be 10' Tall Ponderosa Pines with a caliper mitigation value equal to 5".
 5. All mitigated trees are in addition to the City of Aurora Buffer & Streetscape Requirements.
 6. Street trees located within sight distance triangles or within 50' of a yield or stop sign are to be pruned so that the lowest limb is a minimum of 7' above the ground.

LEGEND

- Replacement Tree (See Sheet TP1)
- Relocated Tree (See Sheet TP1)
- Existing Tree
- Deciduous Tree
- Evergreen Tree
- Ornamental Tree
- Evergreen Shrub
- Deciduous Shrub
- Perennial
- Ornamental Grass
- Vines/Climbers
- 90/10 Fescue Bluegrass Sod
- Low Native Grass Seed
- Grass-Flower Seed
- Tall Native Grass Seed
- Dryland Revegetation Seed Mix
- Detention/Floodplain Revegetation Seed Mix
- Solid Privacy Fence
- Three Rail Fence
- Temporary Fence
- Fire Hydrant

4

Scale: 1"=30'-0"

PREPARED FOR:
CalAtlantic Homes
6161 S. Syracuse Way,
Suite 200
Greenwood Village, CO.
80111
tel 303.486.5000

LAND PLANNING

PCS
GROUP Inc.
1001 16th St. B-180
Denver, CO 80265
tel 303.531.4905

Whispering Pines

Aurora, Colorado

CSP #6 - LANDSCAPE PLAN

Drawn by: **JW**
Checked by: **JP**
Issue Date: **12.2.14**
Revision: **A6.07.18**
Revision: _____
Extension: _____

SHEET NAME
Landscape Plan

SHEET NUMBER
LP3

MATCHLINE - SEE SHEET LP3

(Not Part of CSP #6 -
Shown for reference only)

100 Year
Floodplain

TRACT A

This open space tract to be
dedicated to the City of
Aurora.
Per Section 146-1412 of the
City of Aurora Zoning Code,
Applicant requests that this
area be allowed to remain in
it's natural state; to enhance
the Regional Open Space
system.

Areas disturbed by grading
will be revegetated per sheet
VP1 - Revegetation Plan; and
prior to issuance of CO's for
adjacent lots.

CSP6 Boundary

RB(3)

DETENTION
POND

40' Conoco Philips Pipeline Easement

6' Concrete Trail

3 Temporary
Fence (Typ.)
LD1

10' Regional Concrete Trail

Temporary
Fence (Typ.)
LD1

**PA-11
EXCEPTION PARCEL
(Not part of CSP#6)**

PA-11 is not included with CSP
#1, however revegetation of
disturbed areas associated with
road construction will occur in
Phase 1.

**PA-12
School-Elementary
(Not part of CSP#6)**

40' Conoco Philips Pipeline Easement

Three Rail
Fence (Typ.)
LD1

Column (Typ.)

- Notes:**
1. Refer to Plant List (Sheet LD3)
for all planting.
 2. For Local Street Tree Planting
Program refer to Sheet LP18.
 3. For Relocated & Replacement
Trees refer to Sheets TP1-TP10 of
the Tree Protection Plan by PCS
Group CSP #6.
 4. Unless otherwise noted,
Replacement trees will be 10' Tall
Ponderosa Pines with a caliper
mitigation value equal to 5".
 5. All mitigated trees are in addition
to the City of Aurora Buffer &
Streetscape Requirements.
 6. Street trees located within sight
distance triangles or within 50' of a
yield or stop sign are to be pruned
so that the lowest limb is a
minimum of 7' above the ground.

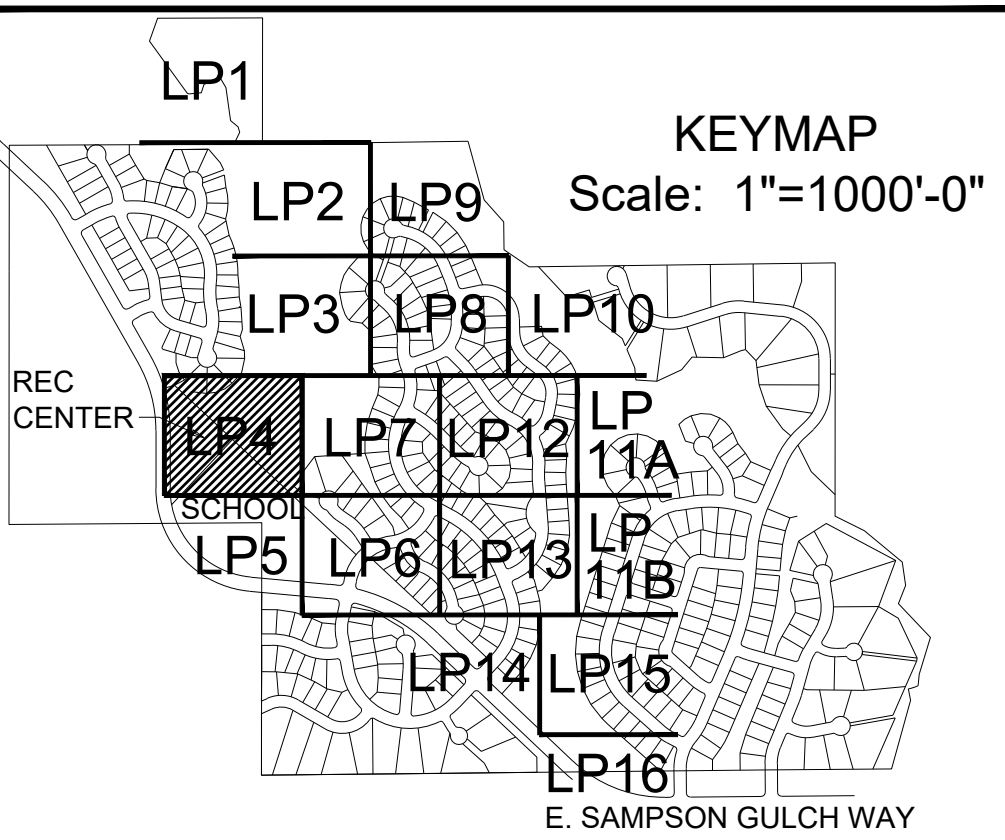
LEGEND

- Replacement Tree (See Sheet TP1)
- Relocated Tree (See Sheet TP1)
- Existing Tree
- Deciduous Tree
- Evergreen Tree
- Ornamental Tree
- Evergreen Shrub
- Deciduous Shrub
- Perennial
- Ornamental Grass
- Vines/Climbers
- 90/10 Fescue Bluegrass Sod
- Low Native Grass Seed
- Grass-Flower Seed
- Tall Native Grass Seed
- Dryland Revegetation
Seed Mix
- Detention/Floodplain
Revegetation Seed Mix
- Solid Privacy Fence
- Three Rail Fence
- Temporary Fence
- Fire Hydrant

4



0 15 30 60
Scale: 1"=30'-0"



PREPARED FOR:
CalAtlantic Homes
6161 S. Syracuse Way,
Suite 200
Greenwood Village, CO.
80111
tel 303.486.5000

LAND PLANNING
PCS
GROUP Inc.
1001 16th St. B-180
Denver, CO 80265
tel 303.531.4905

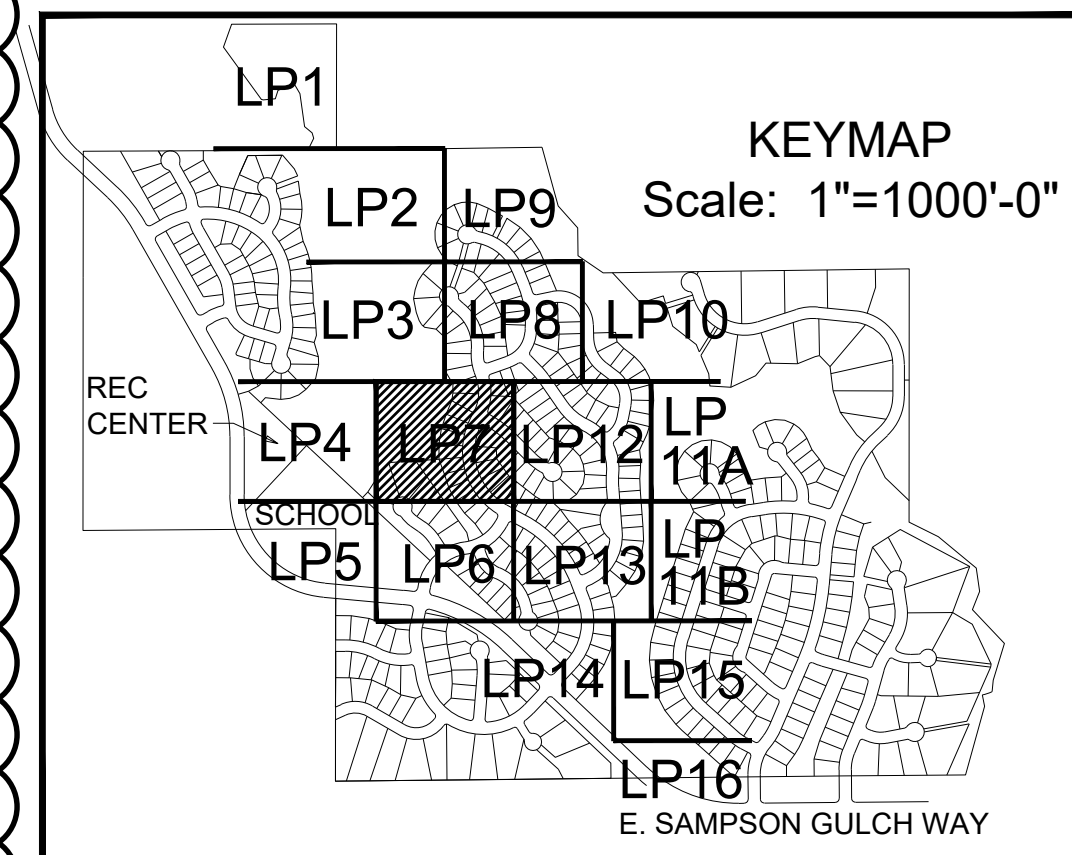
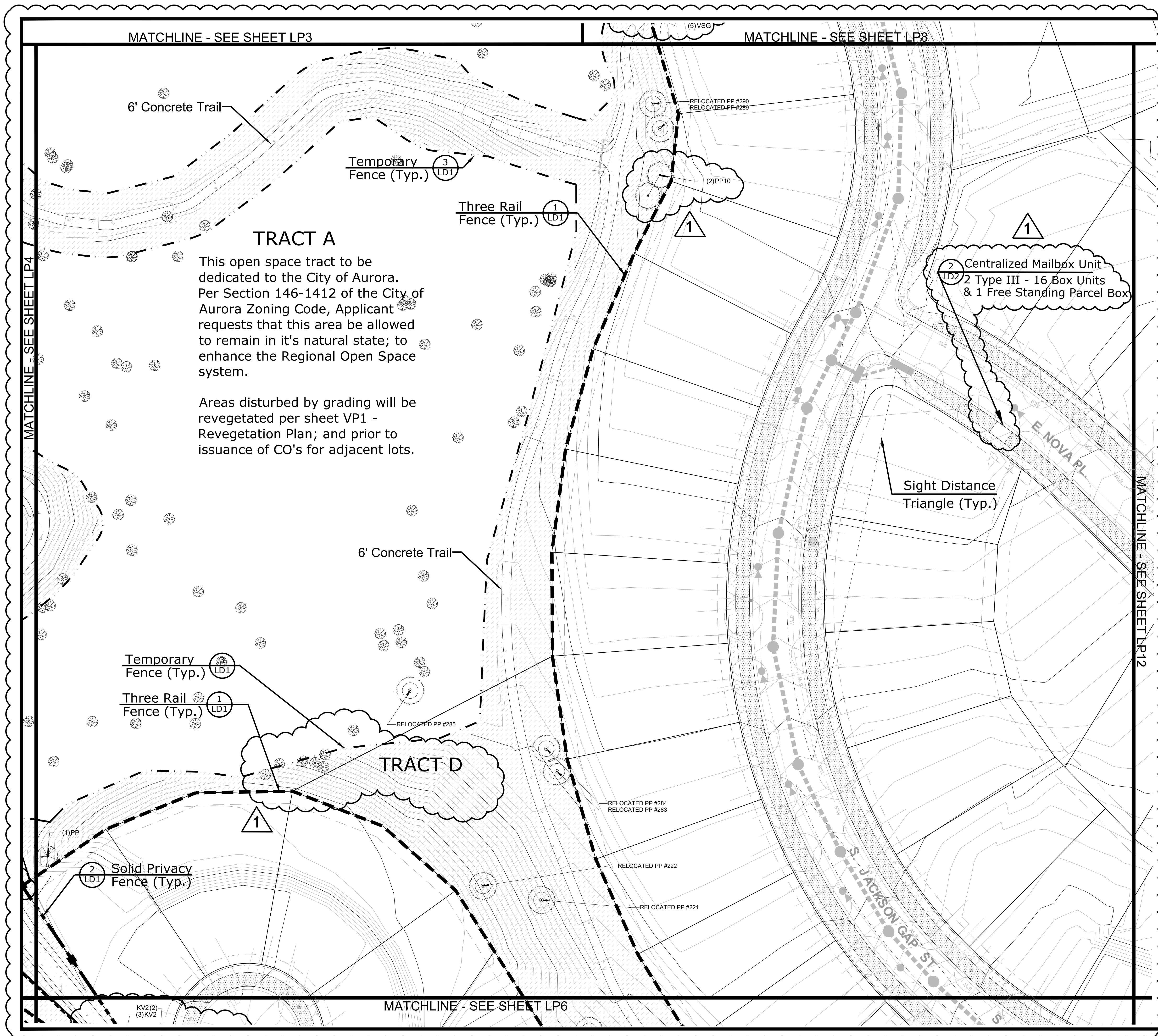
Whispering Pines
Aurora, Colorado
CSP #6 - LANDSCAPE PLAN

Drawn by: **JW**
Checked by: **JP**
Issue Date: **12.2.14**
Revision: **A3.13.15**
Revision: **A9.30.16**
Extension: **A6.07.18**

SHEET NAME
**Landscape
Plan**

SHEET NUMBER
LP4

MATCHLINE - SEE SHEET LP5



- Notes:**
1. Refer to Plant List (Sheet LD3) for all planting.
 2. For Local Street Tree Planting Program refer to Sheet LP18.
 3. For Relocated & Replacement Trees refer to Sheets TP1-TP10 of the Tree Protection Plan by PCS Group CSP #6.
 4. Unless otherwise noted, Replacement trees will be 10' Tall Ponderosa Pines with a caliper mitigation value equal to 5".
 5. All mitigated trees are in addition to the City of Aurora Buffer & Streetscape Requirements.
 6. Street trees located within sight distance triangles or within 50' of a yield or stop sign are to be pruned so that the lowest limb is a minimum of 7' above the ground.

LEGEND

- Replacement Tree (See Sheet TP1)
- Relocated Tree (See Sheet TP1)
- Existing Tree
- Deciduous Tree
- Evergreen Tree
- Ornamental Tree
- Evergreen Shrub
- Deciduous Shrub
- Perennial
- Ornamental Grass
- Vines/Climbers
- 90/10 Fescue Bluegrass Sod
- Low Native Grass Seed
- Grass-Flower Seed
- Tall Native Grass Seed
- Dryland Revegetation Seed Mix
- Detention/Floodplain Revegetation Seed Mix
- Solid Privacy Fence
- Three Rail Fence
- Temporary Fence
- Fire Hydrant

Scale: 1"=30'-0"

North Arrow

PREPARED FOR:
CalAtlantic Homes
6161 S. Syracuse Way,
Suite 200
Greenwood Village, CO.
80111
tel 303.486.5000

LAND PLANNING
PCS
GROUP Inc.
1001 16th St. B-180
Denver, CO 80265
tel 303.531.4905

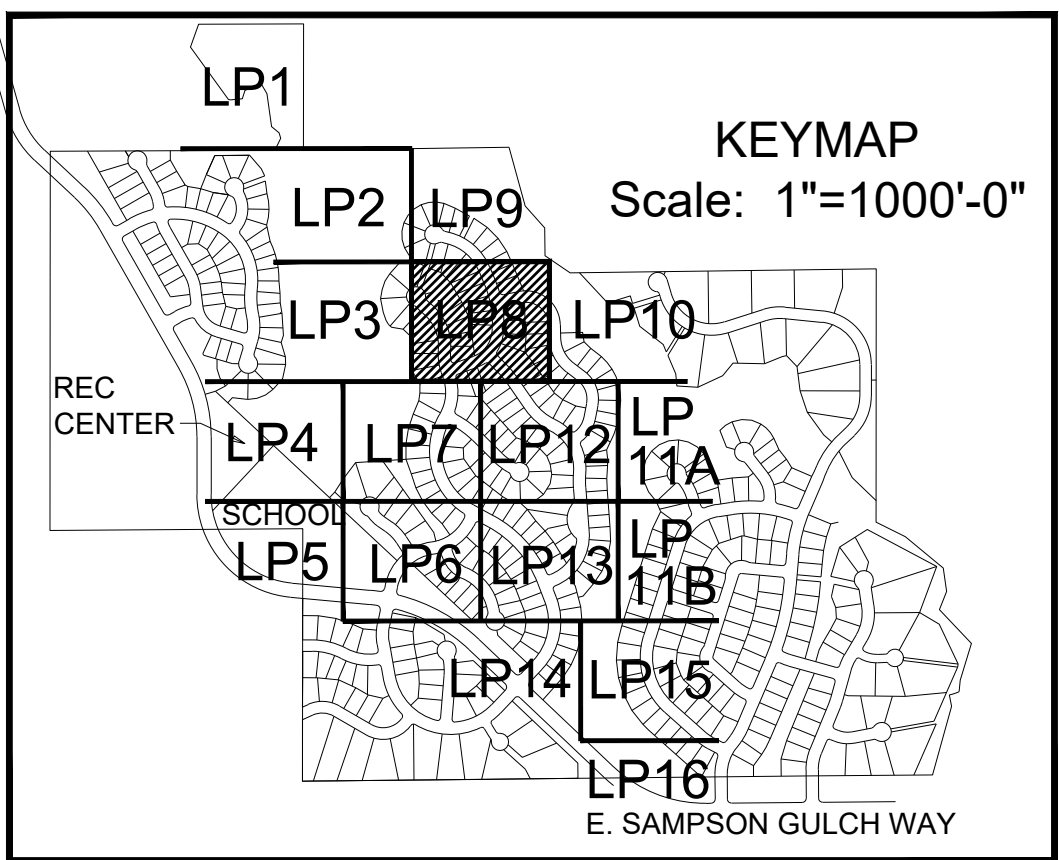
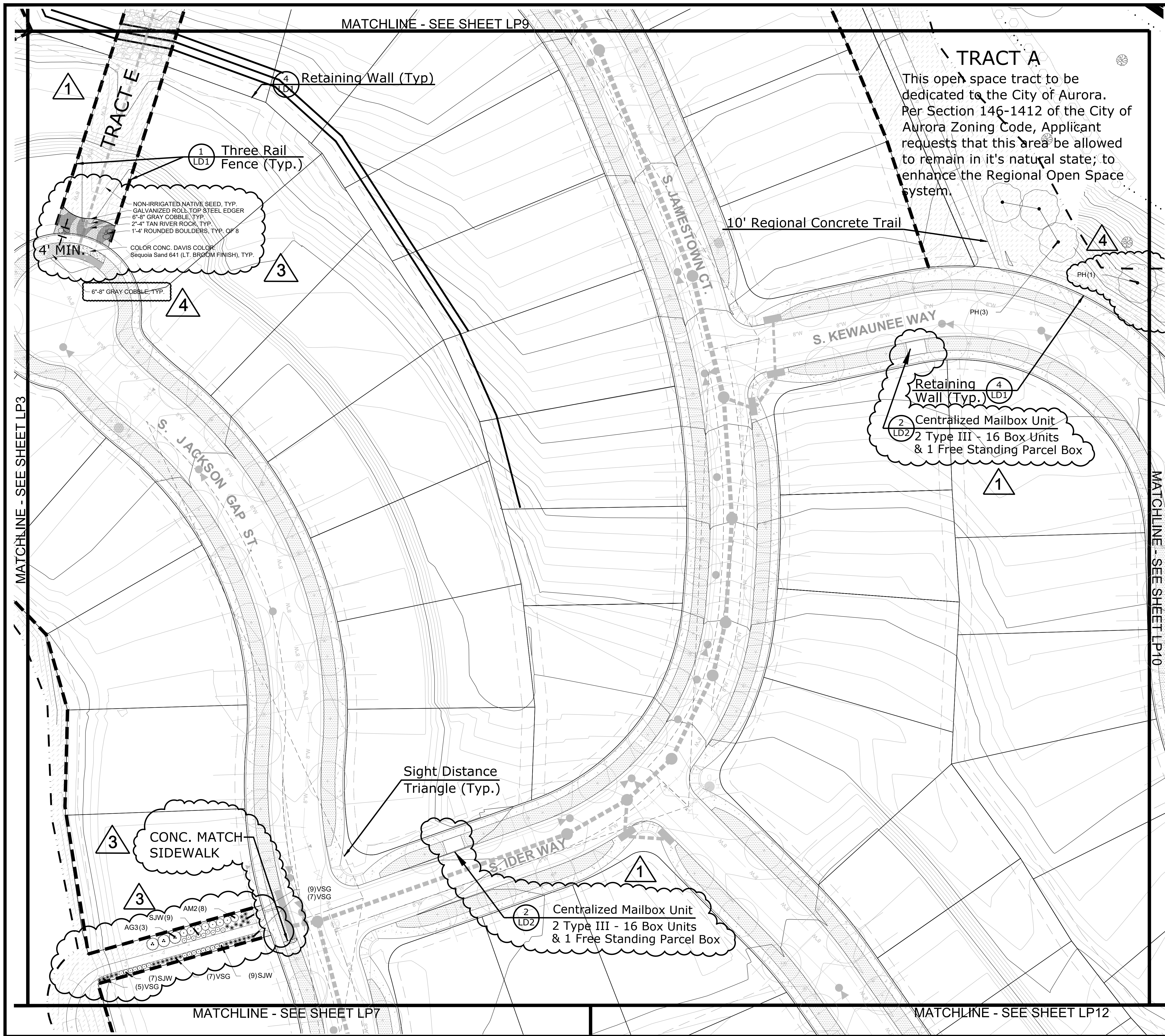
Whispering Pines
Aurora, Colorado

CSP #6 - LANDSCAPE PLAN

Drawn by: JW
Checked by: JP
Issue Date: 12.2.14
Revision: A3.13.15
Revision: A6.07.18
Extension:

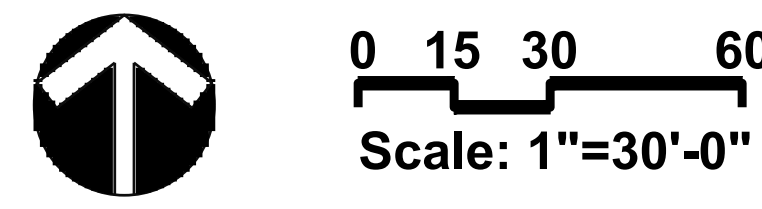
SHEET NAME
Landscape Plan

SHEET NUMBER
LP7



- Notes:**
1. Refer to Plant List (Sheet LD3) for all planting.
 2. For Local Street Tree Planting Program refer to Sheet LP18.
 3. For Relocated & Replacement Trees refer to Sheets TP1-TP10 of the Tree Protection Plan by PCS Group CSP #6.
 4. Unless otherwise noted, Replacement trees will be 10' Tall Ponderosa Pines with a caliper mitigation value equal to 5".
 5. All mitigated trees are in addition to the City of Aurora Buffer & Streetscape Requirements.
 6. Street trees located within sight distance triangles or within 50' of a yield or stop sign are to be pruned so that the lowest limb is a minimum of 7' above the ground.

- LEGEND**
- Replacement Tree (See Sheet TP1)
 - Relocated Tree (See Sheet TP1)
 - Existing Tree
 - Deciduous Tree
 - Evergreen Tree
 - Ornamental Tree
 - Evergreen Shrub
 - Deciduous Shrub
 - Perennial
 - Ornamental Grass
 - Vines/Climbers
 - 90/10 Fescue Bluegrass Sod
 - Low Native Grass Seed
 - Grass-Flower Seed
 - Tall Native Grass Seed
 - Dryland Revegetation Seed Mix
 - Detention/Floodplain Revegetation Seed Mix
 - Solid Privacy Fence
 - Three Rail Fence
 - Temporary Fence
 - Fire Hydrant



PREPARED FOR:
CalAtlantic Homes
6161 S. Syracuse Way,
Suite 200
Greenwood Village, CO.
80111
tel 303.486.5000

LAND PLANNING
PCS
GROUP Inc.
1001 16th St. B-180
Denver, CO 80265
tel 303.531.4905

Whispering Pines

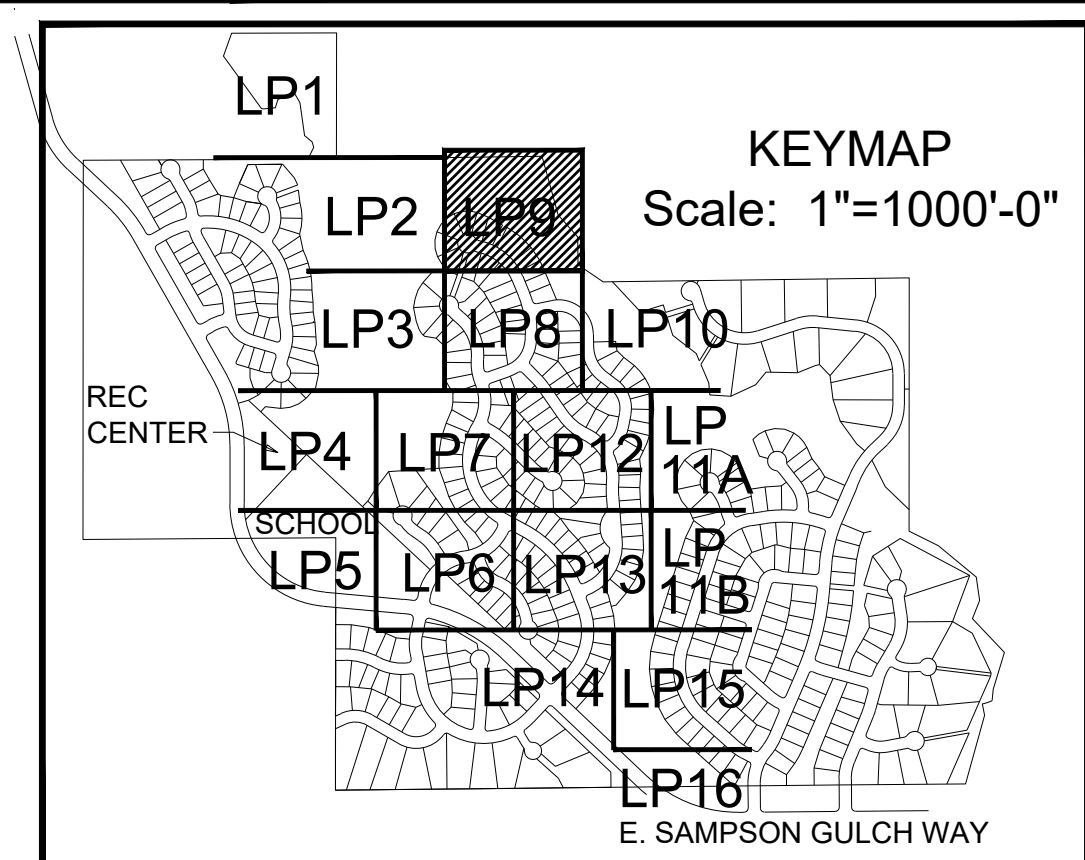
Aurora, Colorado

CSP #6 - LANDSCAPE PLAN

Drawn by: JW
Checked by: JP
Issue Date: 12.2.14
Revision: A3.13.15
Revision: A9.30.16
Extension: A10.2.17

SHEET NAME
Landscape Plan

SHEET NUMBER
LP8



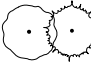








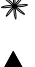
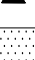

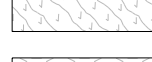



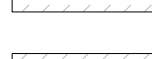




PREPARED FOR:
CalAtlantic Homes
5161 S. Syracuse Way,
Suite 200
Greenwood Village, CO.
80111
tel 303.486.5000

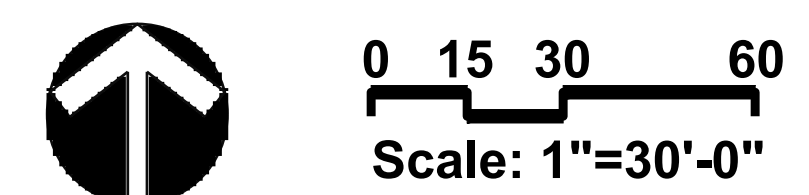
■ LAND PLANNING ■

■ ■ ■
PCS
GROUP Inc.
001 16th St. B-180
Denver, CO 80265
Tel 303.531.4905

- ## Notes:
1. Refer to Plant List (Sheet LD3) for all planting.
 2. For Local Street Tree Planting Program refer to Sheet LP18.
 3. For Relocated & Replacement Trees refer to Sheets TP1-TP10 of the Tree Protection Plan by PCS Group CSP #6.
 4. Unless otherwise noted, Replacement trees will be 10' Tall Ponderosa Pines with a caliper mitigation value equal to 5".
 5. All mitigated trees are in addition to the City of Aurora Buffer & Streetscape Requirements.
 6. Street trees located within sight distance triangles or within 50' of a yield or stop sign are to be pruned so that the lowest limb is a minimum of 7' above the ground.

LEGEND

-  Replacement Tree (See Sheet TP1)
-  Relocated Tree (See Sheet TP1)
-  Existing Tree
-  Deciduous Tree
-  Evergreen Tree
-  Ornamental Tree
-  Evergreen Shrub
-  Deciduous Shrub
-  Perennial
-  Ornamental Grass
-  Vines/Climbers
-  90/10 Fescue Bluegrass Sod
-  Low Native Grass Seed
-  Grass-Flower Seed
-  Tall Native Grass Seed
-  Dryland Revegetation Seed Mix
-  Detention/Floodplain Revegetation Seed Mix
-  Solid Privacy Fence
-  Three Rail Fence
-  Temporary Fence
-  Fire Hydrant



Whispering Pines

Aurora, Colorado

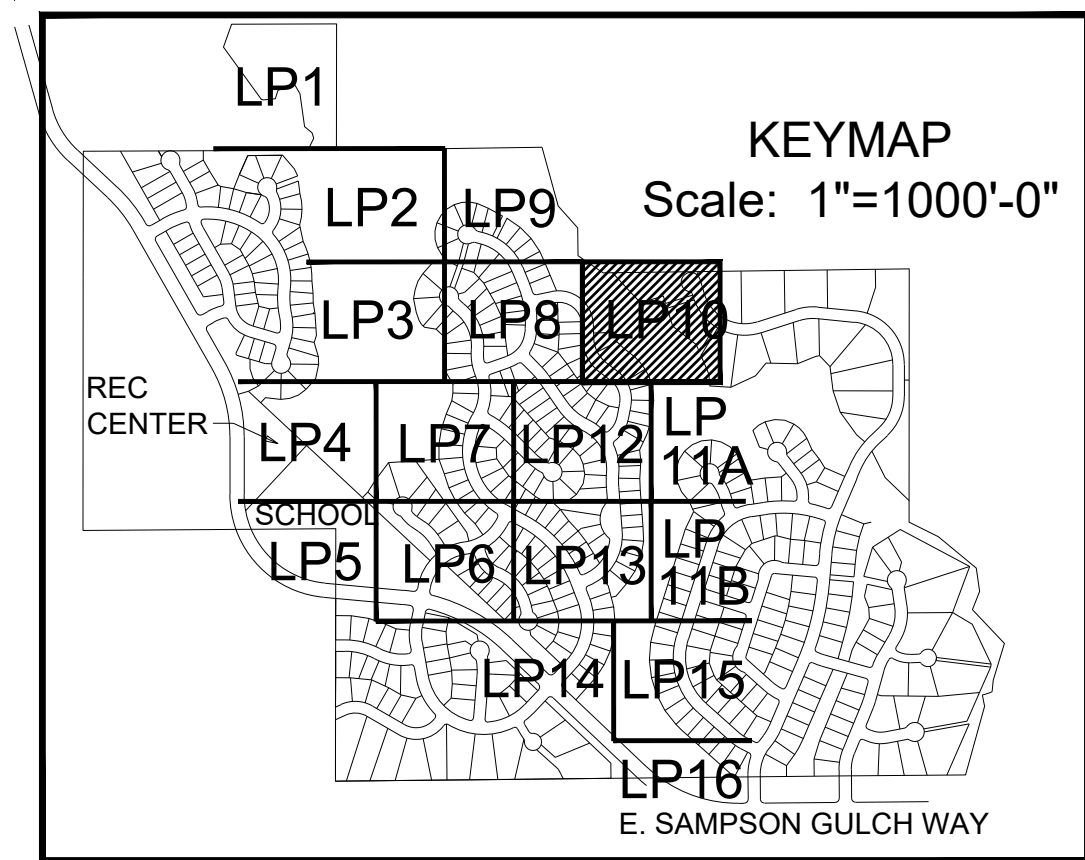
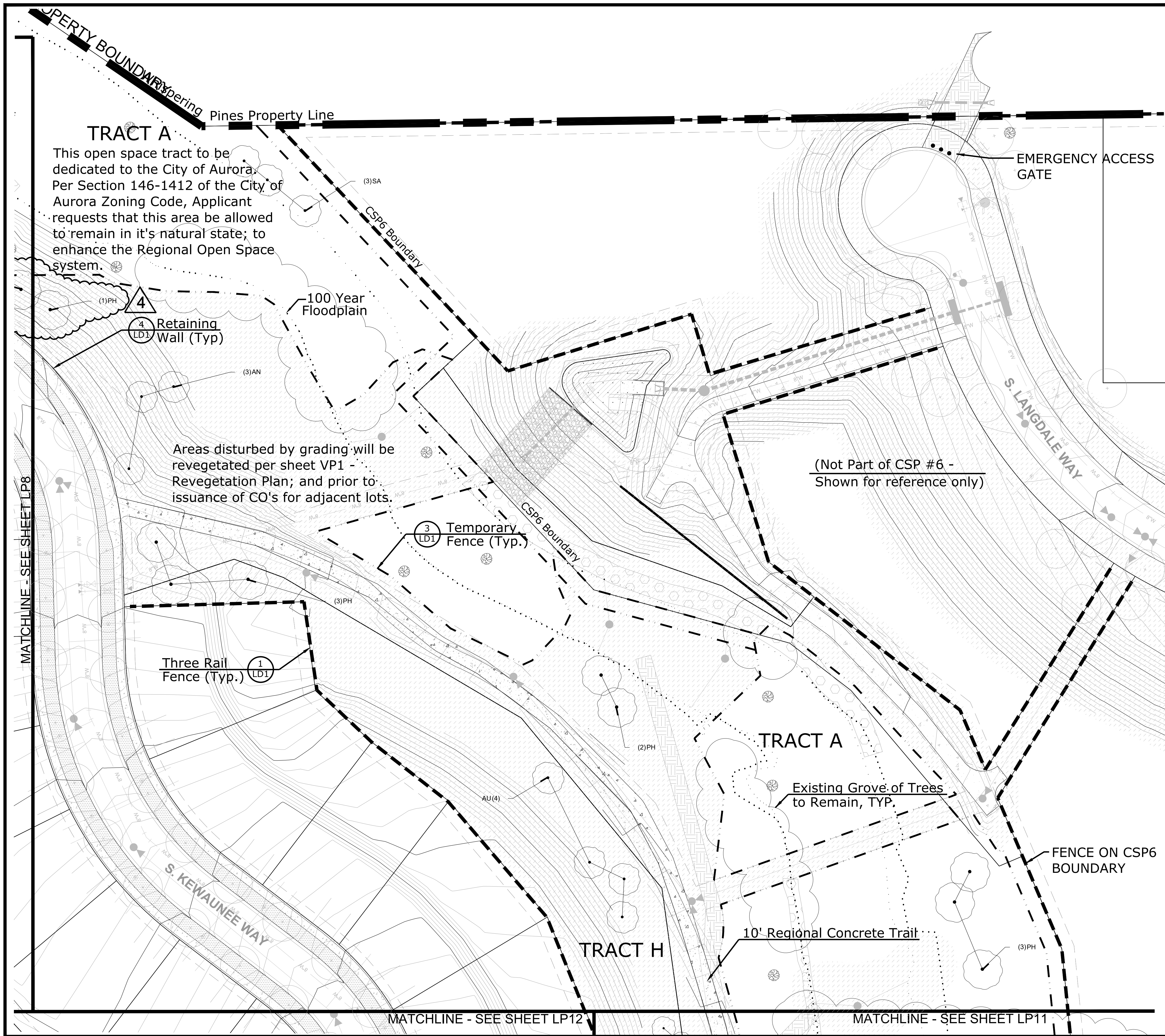
CSP #6 - LANDSCAPE PLAN

Drawn by: JW
 Checked by: JP
 Issue Date: 12.2.14
 Revision: Δ10.2.17
 Revision: _____
 Extension: _____

SHEET NAME

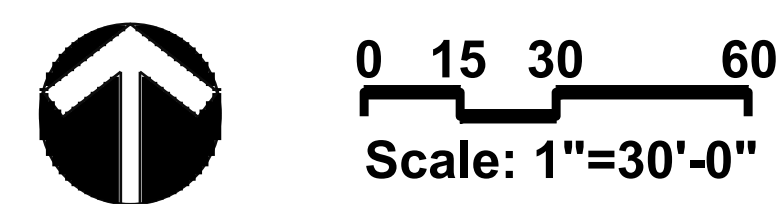
**Landscape
Plan**

SHEET NUMBER
LP9



- Notes:**
1. Refer to Plant List (Sheet LD3) for all planting.
 2. For Local Street Tree Planting Program refer to Sheet LP18.
 3. For Relocated & Replacement Trees refer to Sheets TP1-TP10 of the Tree Protection Plan by PCS Group CSP #6.
 4. Unless otherwise noted, Replacement trees will be 10' Tall Ponderosa Pines with a caliper mitigation value equal to 5".
 5. All mitigated trees are in addition to the City of Aurora Buffer & Streetscape Requirements.
 6. Street trees located within sight distance triangles or within 50' of a yield or stop sign are to be pruned so that the lowest limb is a minimum of 7' above the ground.

- LEGEND**
- Replacement Tree (See Sheet TP1)
 - Relocated Tree (See Sheet TP1)
 - Existing Tree
 - Deciduous Tree
 - Evergreen Tree
 - Ornamental Tree
 - Evergreen Shrub
 - Deciduous Shrub
 - Perennial
 - Ornamental Grass
 - Vines/Climbers
 - 90/10 Fescue Bluegrass Sod
 - Low Native Grass Seed
 - Grass-Flower Seed
 - Tall Native Grass Seed
 - Dryland Revegetation Seed Mix
 - Detention/Floodplain Revegetation Seed Mix
 - Solid Privacy Fence
 - Three Rail Fence
 - Temporary Fence
 - Fire Hydrant



PREPARED FOR:
CalAtlantic Homes
6161 S. Syracuse Way,
Suite 200
Greenwood Village, CO.
80111
tel 303.486.5000

LAND PLANNING
PCS
GROUP Inc.
1001 16th St. B-180
Denver, CO 80265
tel 303.531.4905

Whispering Pines
Aurora, Colorado
CSP #6 - LANDSCAPE PLAN

Drawn by: JW
Checked by: JP
Issue Date: 12.2.14
Revision: 10.2.17
Revision:
Extension:

SHEET NAME
Landscape Plan

SHEET NUMBER
LP10