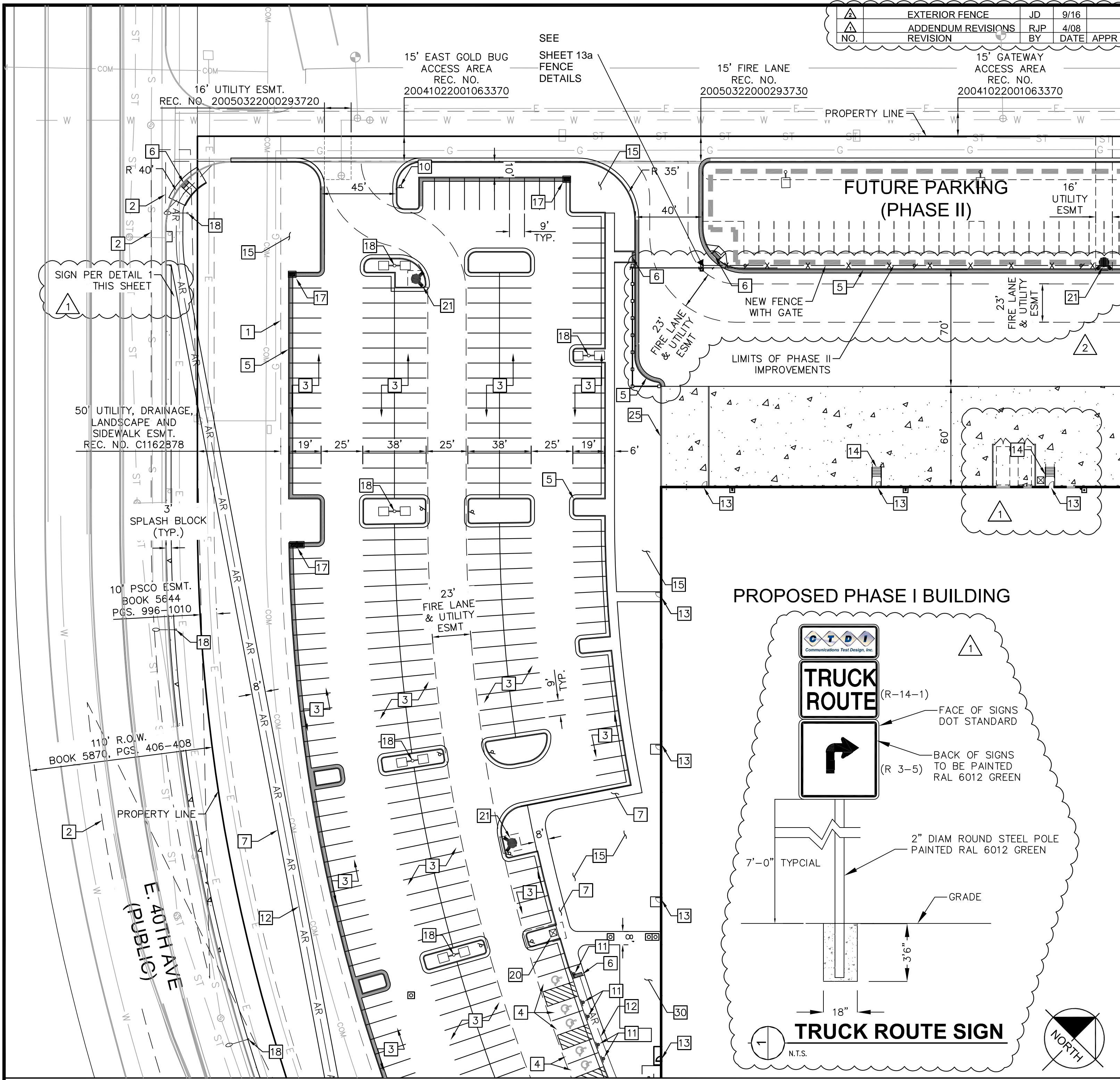
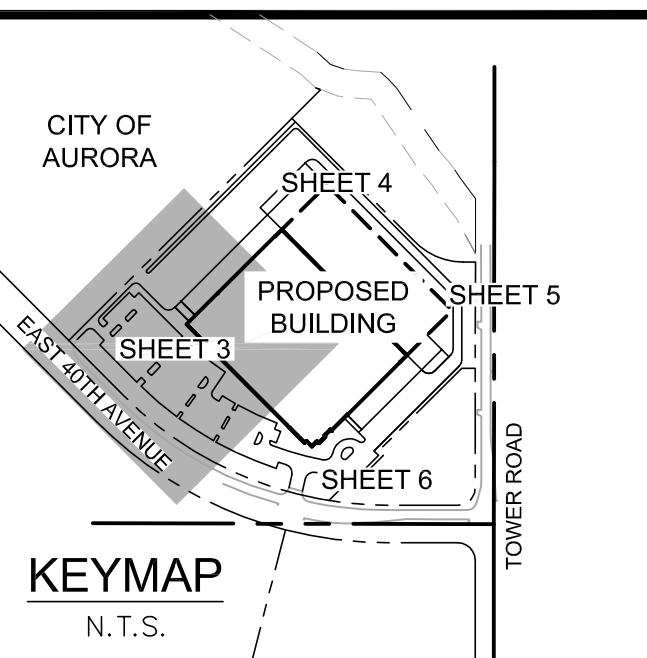


GATEWAY PARK IV EAST SUBDIVISION FILING NO. 19 SITE PLAN FOR CTDI AT GATEWAY PARK OVERALL SITE PLAN		DATE: 07/22/14	DESIGNED BY: RJP DRAWN BY: DBH CHECKED BY: RJP	FILE NO. 096373000SP PROJECT NO. 096373000	SHEET NO. 2
Kimley»Horn 990 South Broadway, Suite 200 Denver, Colorado 80209 (303) 228-2300		4	COA SITE PLAN MYLAR	RJP	1/06
		3	COA SITE PLAN MYLAR	RJP	10/08
		2	COA RESUBMITTAL	RJP	8/29
		1	COA RESUBMITTAL	RJP	7/22
		NO.	REVISION	BY	DATE (APPR.)
		3	EXTERIOR FENCE	JD	9/16/16
		3	ADMINISTRATIVE AMENDMENT	JD	4/10/17

wma-arch.com\Denver\Jobs14\Landmark Development - CO\DEN14-0033-00\_CDTI\_-BTS\N\Consultants\Civil\2016-09-14 Planning backgrounds from KH\096373000SP1.dwg Rob Kiester 9/15/2016 1:58 PM



EXTERIOR FENCE	JD	9/16
ADDENDUM REVISIONS	RJP	4/08
REVISION	BY	DATE



NO.	REVISION
1	COA RESUBMITTAL
2	COA RESUBMITTAL
3	COA SITE PLAN MYLAR
4	COA SITE PLAN MYLAR

- KEY NOTES**
- 1 LANDSCAPE SETBACK LINE
  - 2 SIGHT LINE
  - 3 STANDARD PARKING SPACES (9' X 19' TYP.)
  - 4 ACCESSIBLE PARKING SPACES
  - 5 CONCRETE CURB & GUTTER
  - 6 ACCESSIBLE CURB RAMP WITH DETECTABLE WARNING
  - 7 SIDEWALK, WIDTH PER PLAN
  - 8 PEDESTRIAN CROSSWALK
  - 9 6" BOLLARD
  - 10 STOP SIGN
  - 11 ACCESSIBLE PARKING SIGN AND BOLLARD
  - 12 ACCESSIBLE ROUTE
  - 13 BUILDING INGRESS/EGRESS DOOR
  - 14 STAIRS
  - 15 LANDSCAPE AREA (REF: LANDSCAPE PLANS)
  - 16 BIKE RACKS(INVERTED "U", RAL6012 GREEN)
  - 17 STORM INLET
  - 18 LIGHT POLE
  - 19 "DO NOT ENTER" SIGN
  - 20 DOMESTIC WATER METER
  - 21 FIRE HYDRANT AND BOLLARD ASSEMBLY PER C.O.A. STD. DETAIL 208
  - 22 FIRE DEPARTMENT CONNECTION WITH KNOX CAPS
  - 23 ELECTRICAL TRANSFORMER AND PAD
  - 24 GAS METER
  - 25 SCREEN WALL PER ARCHITECT
  - 26 MONUMENT SIGN
  - 27 WATER FEATURE
  - 28 CONCRETE CROSSSPAN
  - 29 FLAG POLES
  - 30 EMPLOYEE AMENITY AREA
  - 31 KNOX BOX
  - 32 SIGN ON DOOR: RISER ROOM
  - 33 ELECTRIC METER

**Kimley»Horn**

990 South Broadway, Suite 200  
Denver, Colorado 80209 (303) 228-2300

**GATEWAY PARK IV EAST**

**SUBDIVISION FILING NO. 19**

SITE PLAN FOR CTDI AT GATEWAY PARK

SITE PLAN

DATE: 07/22/14

DESIGNED BY: RJP

DRAWN BY: DBH

CHECKED BY: RJP

FILE NO. 096373000SP1

PROJECT NO. 096373000

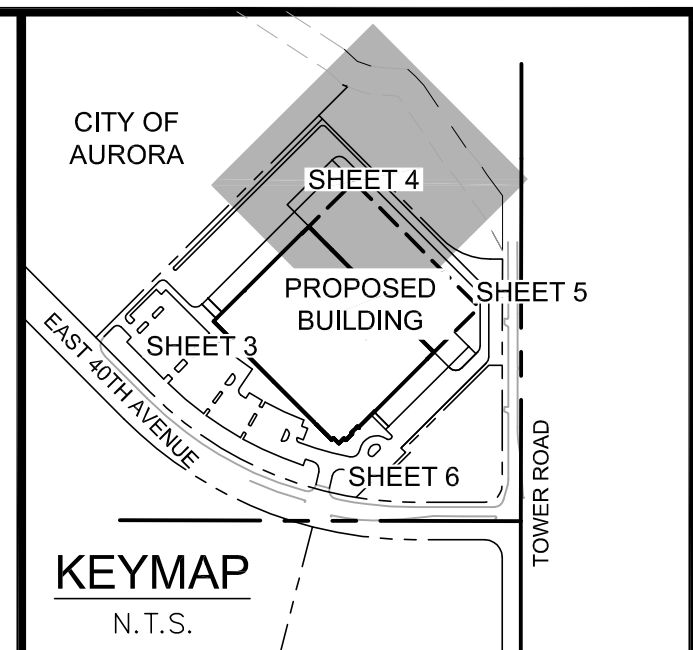
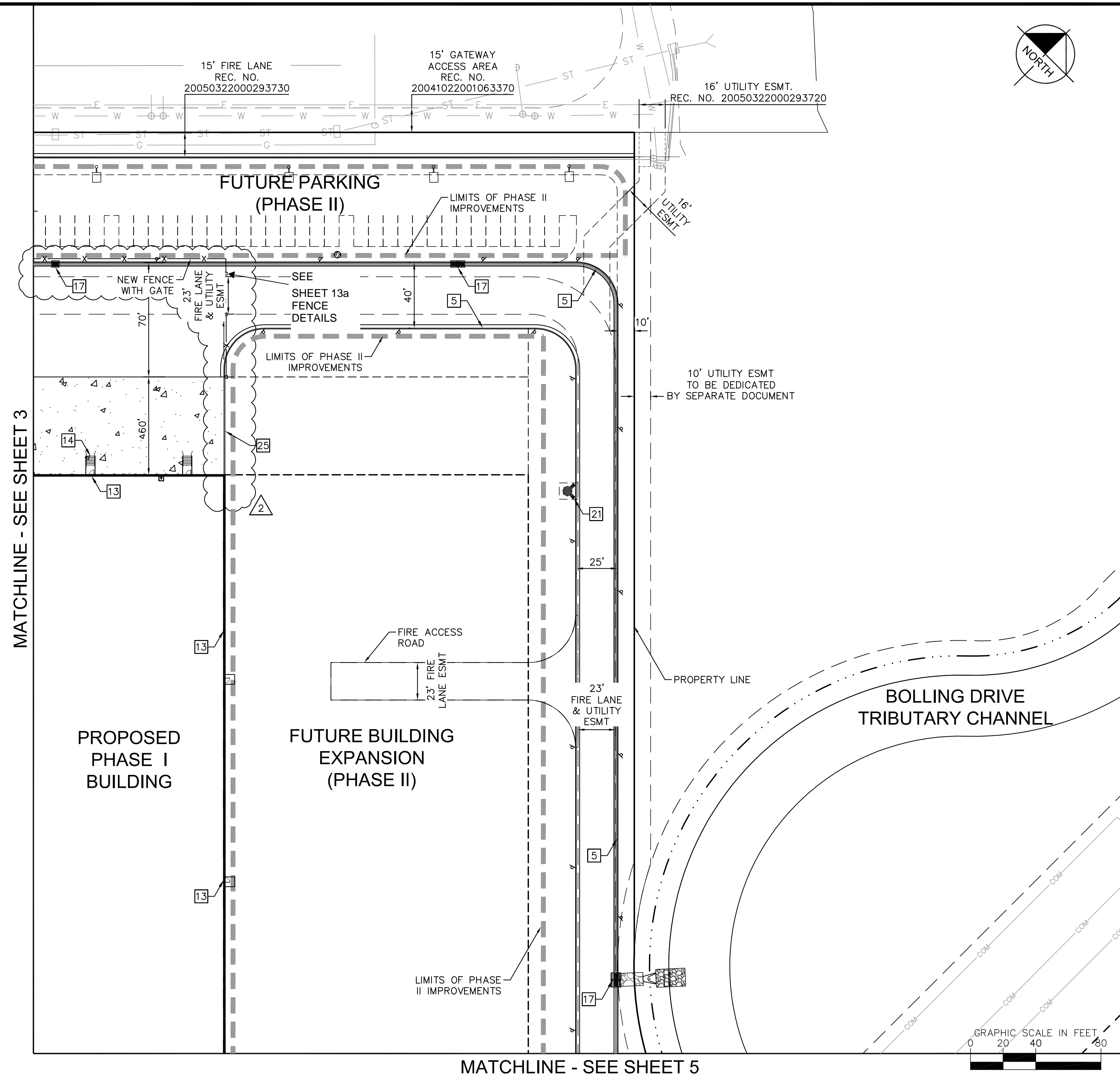
SHEET NO. 3









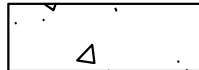

EXTERIOR FENCE

ADMINISTRATIVE AMENDMENT

9/16/16

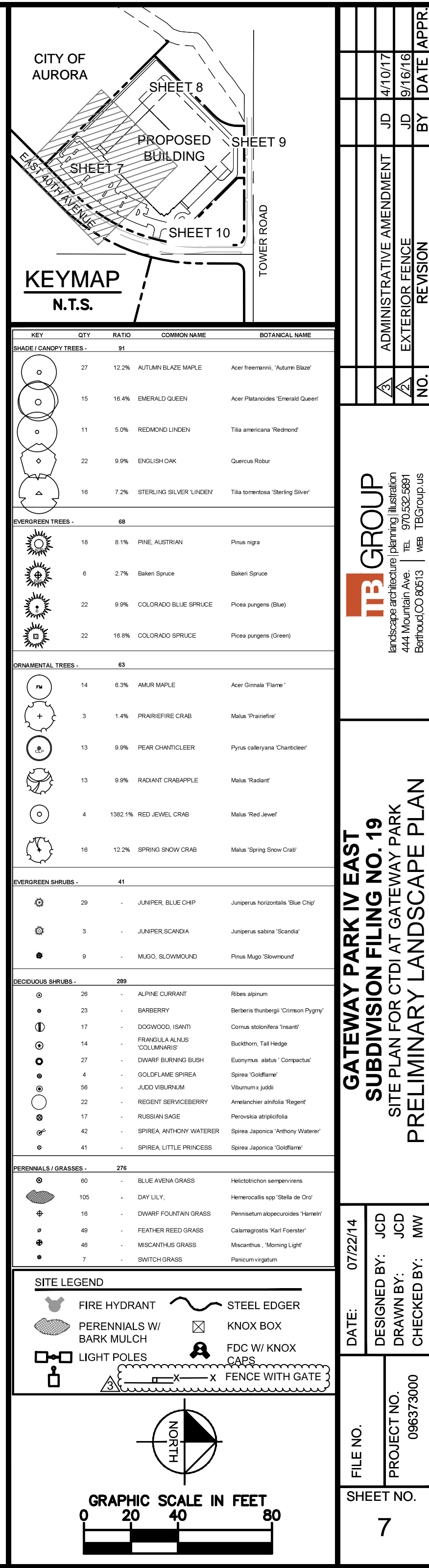
4/10/17



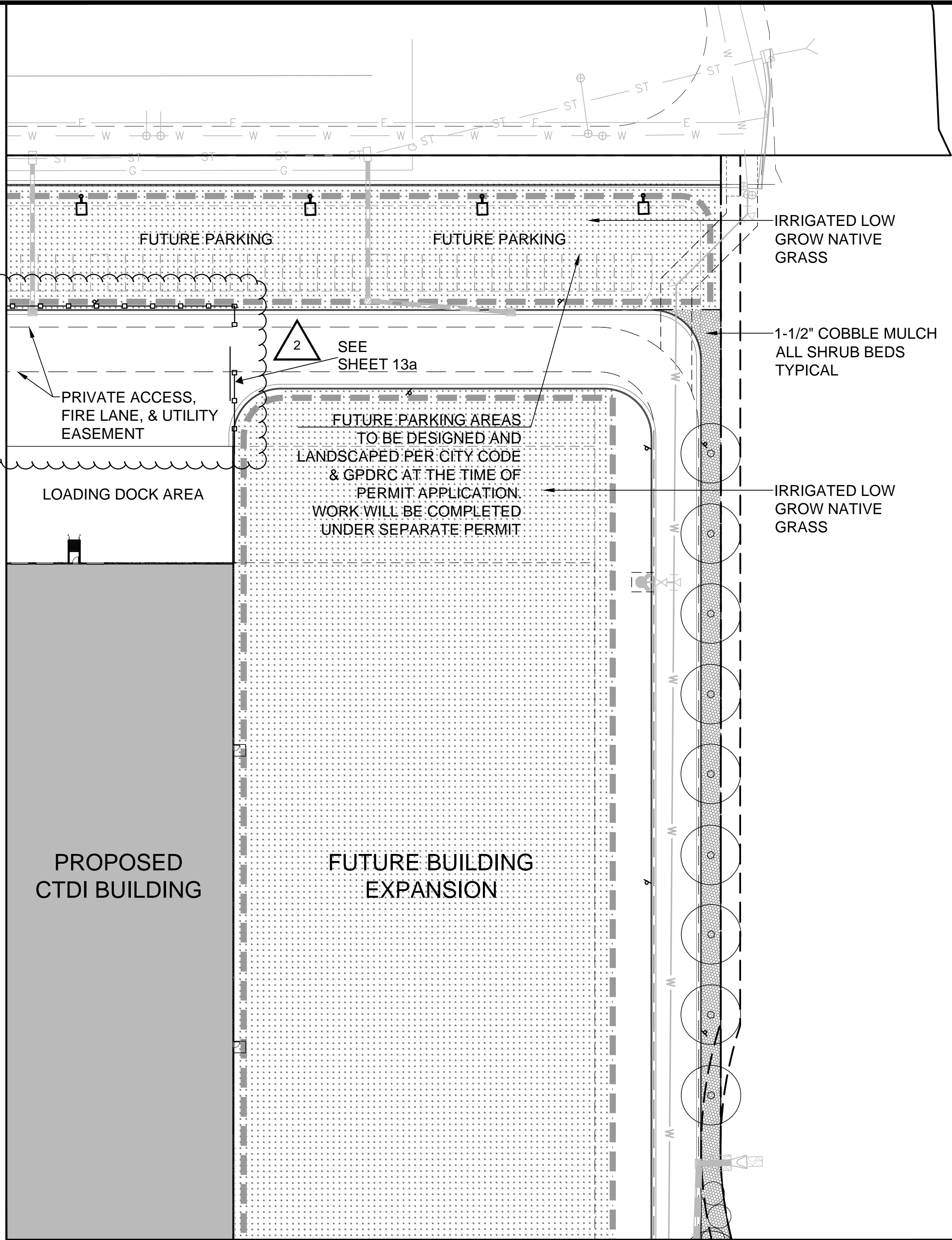
- ## LEGEND
- |   |                           |
|---|---------------------------|
|    | PROPERTY LINE             |
|    | PROPOSED UTILITY EASEMENT |
|    | EASEMENT LINE             |
|      | FUTURE DEVELOPMENT        |
|    | CONCRETE PAVEMENT         |
|    | FENCE WITH GATE           |

- ## KEY NOTES
- 1 LANDSCAPE SETBACK LINE
  - 2 SIGHT LINE
  - 3 STANDARD PARKING SPACES  
(9' X 19' TYP.)
  - 4 ACCESSIBLE PARKING SPACES
  - 5 CONCRETE CURB & GUTTER
  - 6 ACCESSIBLE CURB RAMP WITH  
DETECTABLE WARNING
  - 7 SIDEWALK, WIDTH PER PLAN
  - 8 PEDESTRIAN CROSSWALK
  - 9 6" BOLLARD
  - 10 STOP SIGN
  - 11 ACCESSIBLE PARKING SIGN AND  
BOLLARD
  - 12 ACCESSIBLE ROUTE
  - 13 BUILDING INGRESS/EGRESS DOOR
  - 14 STAIRS
  - 15 LANDSCAPE AREA  
(REF: LANDSCAPE PLANS)
  - 16 BIKE RACKS(INVERTED "U", RAL6012  
GREEN)
  - 17 STORM INLET
  - 18 LIGHT POLE
  - 19 "DO NOT ENTER" SIGN
  - 20 DOMESTIC WATER METER
  - 21 FIRE HYDRANT AND BOLLARD  
ASSEMBLY PER C.O.A. STD. DETAIL  
208
  - 22 FIRE DEPARTMENT CONNECTION WITH  
KNOX CAPS
  - 23 ELECTRICAL TRANSFORMER AND PAD
  - 24 GAS METER
  - 25 SCREEN WALL PER ARCHITECT
  - 26 MONUMENT SIGN
  - 27 WATER FEATURE
  - 28 CONCRETE CROSSSPAN
  - 29 FLAG POLES
  - 30 EMPLOYEE AMENITY AREA
  - 31 KNOX BOX
  - 32 SIGN ON DOOR: RISER ROOM
  - 33 ELECTRIC METER

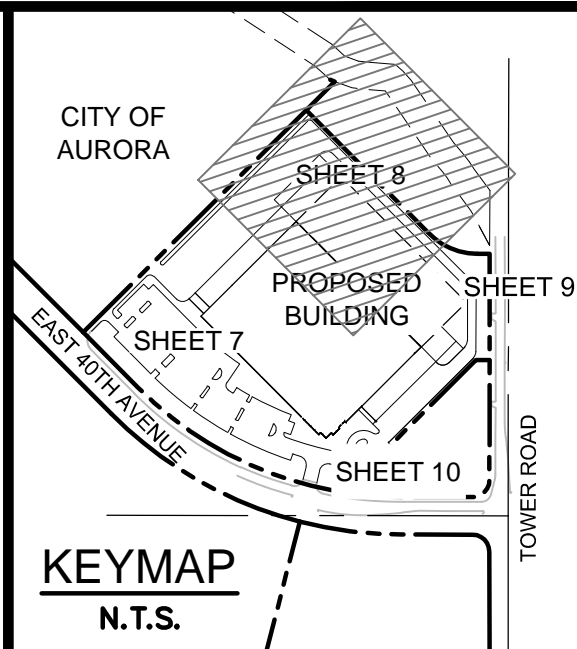
SHEET NO.  4	FILE NO. 096373000SP1	DATE: 07/22/14	GATEWAY PARK IV EAST SUBDIVISION FILING NO. 19 SITE PLAN FOR CTDI AT GATEWAY PARK SITE PLAN	Kimley»»Horn 990 South Broadway, Suite 200 Denver, Colorado 80209 (303) 228-2300	4	COA SITE PLAN MYLAR	RJP	1/06
	PROJECT NO. 096373000	DESIGNED BY: RJP			3	COA SITE PLAN MYLAR	RJP	10/08
		DRAWN BY: DBH			2	COA RESUBMITTAL	RJP	8/29
		CHECKED BY: RJP			1	COA RESUBMITTAL	RJP	7/22
					NO.	REVISION	BY	DATE
			EXTERIOR FENCE	JD	9/16/16			
			ADMINISTRATIVE AMENDMENT	JD	4/10/17			



MATCHLINE - SEE SHEET 7

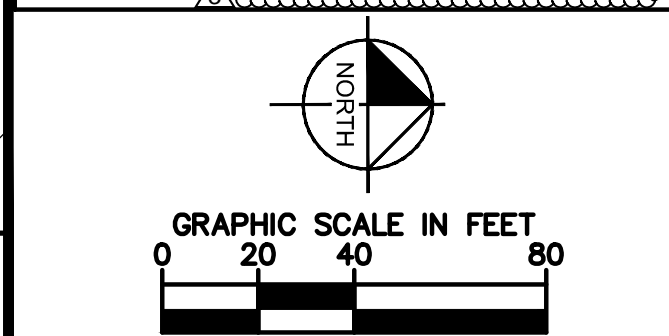


MATCHLINE - SEE SHEET 9



KEY	QTY	RATIO	COMMON NAME	BOTANICAL NAME
SHADE / CANOPY TREES - 81				
	27	12.2%	AUTUMN BLAZE MAPLE	Acer freemanii 'Autumn Blaze'
	15	16.4%	EMERALD QUEEN	Acer Platanoides 'Emerald Queen'
	11	5.0%	REDMOND LINDEN	Tilia americana 'Redmond'
	22	9.9%	ENGLISH OAK	Quercus Robur
	16	7.2%	STERLING SILVER LINDEN	Tilia tomentosa 'Sterling Silver'
EVERGREEN TREES - 68				
	18	8.1%	PINE, AUSTRIAN	Pinus nigra
	6	2.7%	Bakeri Spruce	Bakeri Spruce
	22	9.9%	COLORADO BLUE SPRUCE	Picea pungens (Blue)
	22	16.8%	COLORADO SPRUCE	Picea pungens (Green)
ORNAMENTAL TREES - 63				
	14	6.3%	AMUR MAPLE	Acer Ginnale 'Flame'
	3	1.4%	PRAIRIE FIRE CRAB	Malus 'Prairiefire'
	13	9.9%	PEAR CHANTICLEER	Pyrus calleryana 'Chanticleer'
	13	9.9%	RADIANT CRABAPPLE	Malus 'Radiant'
	4	13.02.1%	RED JEWEL CRAB	Malus 'Red Jewel'
	16	12.2%	SPRING SNOW CRAB	Malus 'Spring Snow Crab'
EVERGREEN SHRUBS - 41				
	29	-	JUNIPER, BLUE CHIP	Juniperus horizontalis 'Blue Chip'
	3	-	JUNIPER, SCANDIA	Juniperus sabinia 'Scandia'
	9	-	MUGO, SLOWMOUND	Pinus Mugo 'Slowmound'
DECIDUOUS SHRUBS - 289				
	26	-	ALPINE CURRANT	Ribes alpinum
	23	-	BARBERRY	Berberis thunbergii 'Crimson Pygmy'
	17	-	DOGWOOD, (SANT)	Cornus stolonifera 'Insant'
	14	-	FRANKULA ALNUS 'COLUMBIENS'	Buckthorn, Tall Hedge
	27	-	DWARF BURNING BUSH	Eonymus alatus 'Compactus'
	4	-	GOLDFLAME SPIREA	Spiraea 'Goldflame'
	56	-	JUDO VIBURNUM	Viburnum x juddi
	22	-	REGENCY SERVICEBERRY	Amelanchier alnifolia 'Regent'
	17	-	RUSSIAN SAGE	Perovskia atropictifolia
	42	-	SPIREA, ANTHONY WATERER	Spiraea Japonica 'Anthony Waterer'
	41	-	SPIREA, LITTLE PRINCESS	Spiraea Japonica 'Goldflame'
PERENNIALS / GRASSES - 276				
	60	-	BLUE AVENA GRASS	Helictotrichon sempervirens
	105	-	DAY LILY,	Heimerocallis spp 'Stella de Oro'
	16	-	DWARF FOUNTAIN GRASS	Pennisetum alpecurioides 'Hameln'
	49	-	FEATHER REED GRASS	Calamagrostis 'Karl Foerster'
	46	-	MISCANTHUS GRASS	Miscanthus 'Morning Light'
	7	-	SWITCH GRASS	Panicum virgatum

SITE LEGEND	
	FIRE HYDRANT
	PERENNIALS W/ BARK MULCH
	LIGHT POLES
	STEEL EDGER
	KNOX BOX
	FDC W/ KNOX CAPS
	FENCE WITH GATE



CITY OF AURORA		ADMINISTRATIVE AMENDMENT	JD	4/10/17
		EXTERIOR FENCE	JD	9/16/16
		REVISION	BY	DATE
			NO.	APPR.
GATEWAY PARK IV EAST				
SUBDIVISION FILING NO. 19				
SITE PLAN FOR CTDI AT GATEWAY PARK				
PRELIMINARY LANDSCAPE PLAN				
FILE NO.	DATE:	DESIGNED BY:	JCD	07/22/14
PROJECT NO.	DRAWN BY:	CHECKED BY:	JCD	096373000
SHEET NO.				8

