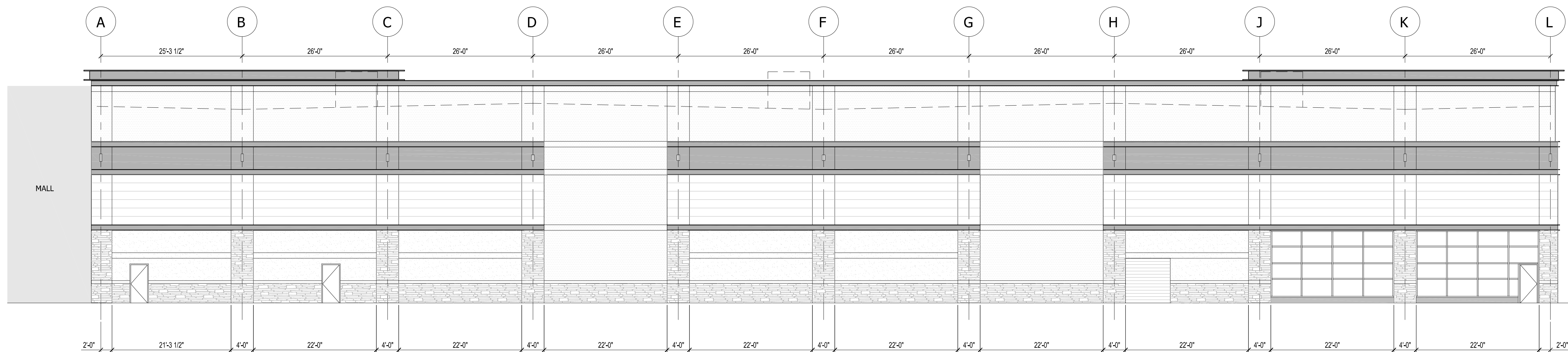
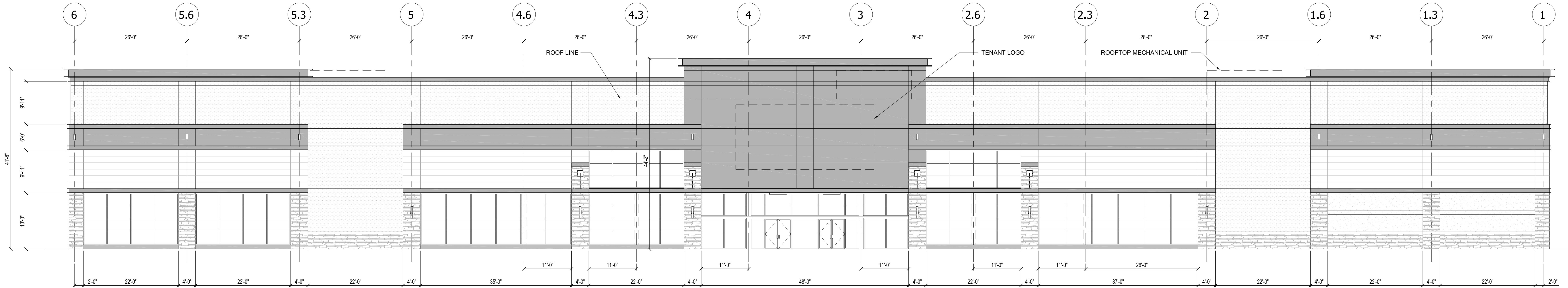


USER: GREENBACK PLOTTED: 25/02/2020 - 8:27 AM U:\P\W\Washington Prime Group\CO15.0004365.000\WPG - Aurora - Sears Demo\DRAWINGS\4-Elevations\19.0004365.000_Aurora Fieldhouse_CO_ELEVATIONS.dwg LAYOUT: DMS



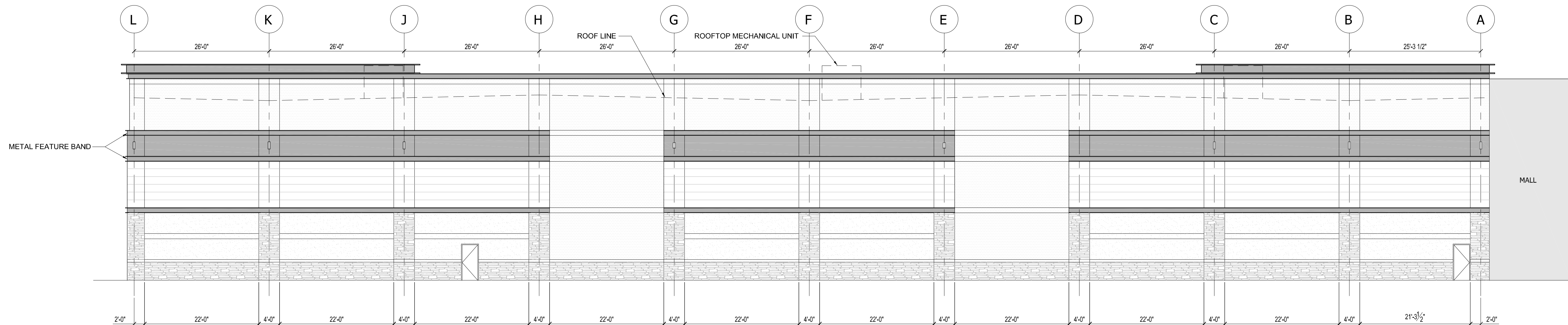
OVERALL WEST ELEVATION
3/32" = 1'-0"

H10
AE101



OVERALL NORTH ELEVATION
3/32" = 1'-0"

H6
AE101



OVERALL EAST ELEVATION
3/32" = 1'-0"

H1
AE101

- MATERIAL LEGEND:**
- STONE VENEER (SV-1):
 - MFG: CREATIVE MINES
 - PRODUCT: CRAFT CHOP STONE
 - COLOR: SEAPEARL
 - EIFS (EFS-1):
 - MFG: DRYVIT
 - COLOR: CHINA WHITE
 - EIFS (EFS-3):
 - MFG: DRYVIT
 - PRODUCT: REFLECTIT
 - COLOR: MATCH BM DEEP SPACE
 - EIFS (EFS-4):
 - MFG: DRYVIT
 - COLOR: TWISTED HONEY TEXTURED
 - SYNTHETIC WOOD (SYN-1):
 - MFG: NICHHA
 - PRODUCT: VINTAGE WOOD
 - COLOR: SPRUCE

NELSON
Nelco Architecture, Inc.

311 Elm Street
Suite 600
Cincinnati, OH 45202
Phone: (513) 241-3000

**WASHINGTON
PRIME GROUP**

Contact Information

Owner p: (614) 621-9000
Washington Prime Group
180 E. Broad St.
Columbus, OH 43215

Architect p: (513) 241-3000
Nelco Architecture, Inc.
311 Elm Street, Suite 600
Cincinnati, Ohio 45202

Structural p: (513) 579-8200
Thorson Baker & Assoc.
2055 Reading Rd, Suite 450
Cincinnati, OH 45202

ME/P p: (330) 659-6688
Thorson Baker & Assoc.
3030 W. Shrewsbury
Richfield, OH 44286

Civil p: (303) 228-2339
Kinley + Horn
4582 South Ulster St, Suite 1500
Denver, CO 80237

Sheet Issue Information

Issued **ENTITLEMENTS 02-03-2020**

Revised  Description Date

Professional Stamp

Project Information

Title **TC AT AURORA
FIELDHOUSE**

Address 14200 E. ALAMEDA AVE.

AURORA, CO 80012

Project Number 19.0004365

Sheet Information

Title **EXTERIOR
BUILDING
ELEVATIONS**

Drawn GR

Reviewed CK

Scale As Noted

Authorized For ENTITLEMENTS

AE101