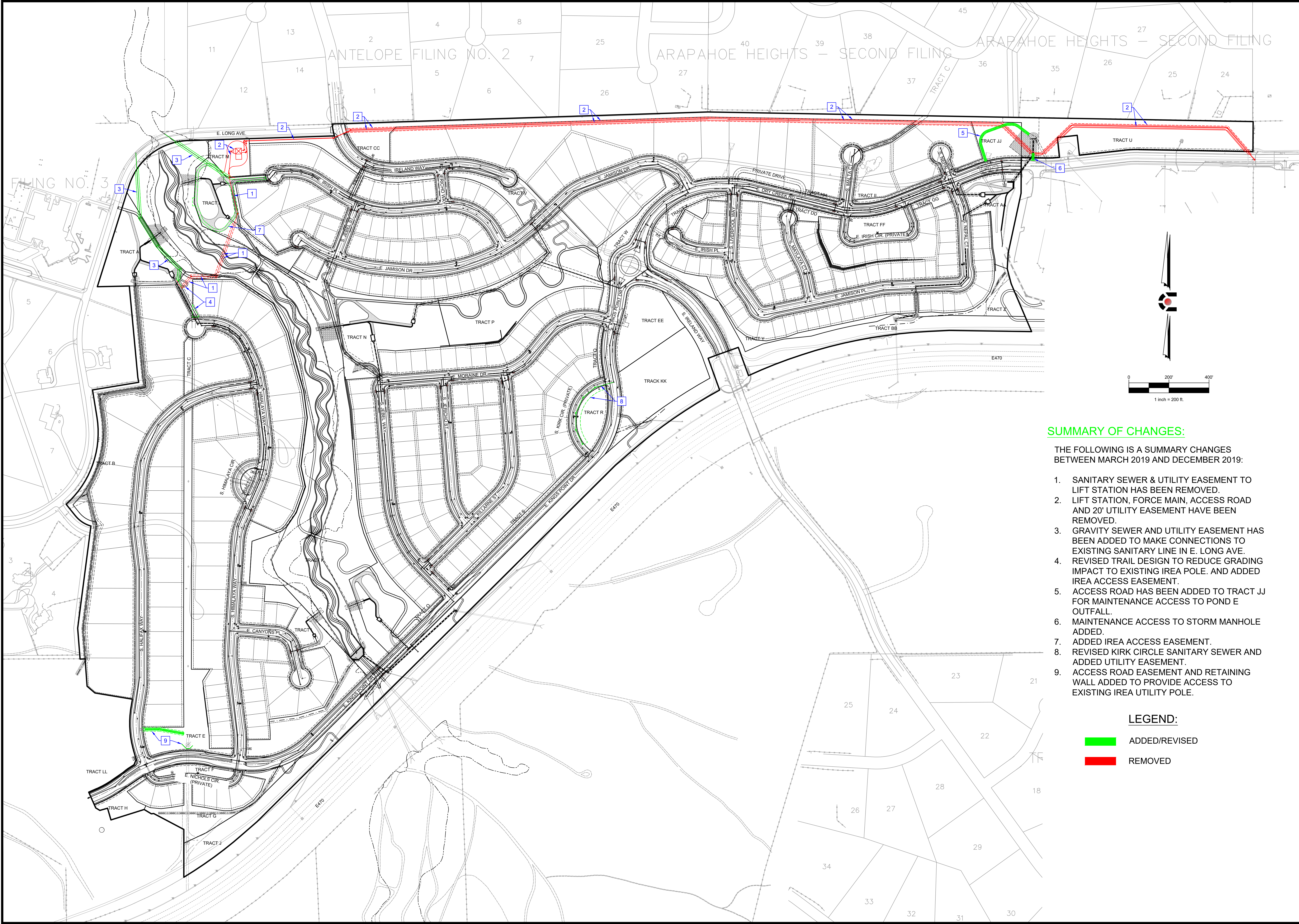


12/17/2019 2:11 PM: X:\14-030 KINGS POINT\CD\DWG\CDSP SUMMARY OF CHANGES.DWG.



SUMMARY OF CHANGES:

THE FOLLOWING IS A SUMMARY CHANGES BETWEEN MARCH 2019 AND DECEMBER 2019:

- 1. SANITARY SEWER & UTILITY EASEMENT TO LIFT STATION HAS BEEN REMOVED.
- 2. LIFT STATION, FORCE MAIN, ACCESS ROAD AND 20' UTILITY EASEMENT HAVE BEEN REMOVED.
- 3. GRAVITY SEWER AND UTILITY EASEMENT HAS BEEN ADDED TO MAKE CONNECTIONS TO EXISTING SANITARY LINE IN E. LONG AVE.
- 4. REVISED TRAIL DESIGN TO REDUCE GRADING IMPACT TO EXISTING IREA POLE. AND ADDED IREA ACCESS EASEMENT.
- 5. ACCESS ROAD HAS BEEN ADDED TO TRACT JJ FOR MAINTENANCE ACCESS TO POND E OUTFALL.
- 6. MAINTENANCE ACCESS TO STORM MANHOLE ADDED.
- 7. ADDED IREA ACCESS EASEMENT.
- 8. REVISED KIRK CIRCLE SANITARY SEWER AND ADDED UTILITY EASEMENT.
- 9. ACCESS ROAD EASEMENT AND RETAINING WALL ADDED TO PROVIDE ACCESS TO EXISTING IREA UTILITY POLE.

LEGEND:

- ADDED/REVISED
- REMOVED

CIVIL ENGINEERING  
DEVELOPMENT CONSULTING  
NATURAL RESOURCES CONSULTING  
LAND SURVEYING  
303.703.4444  
1950 W. Littleton Blvd., Ste. 109  
Littleton, CO 80120

CALL 2 BUSINESS DAYS IN ADVANCE BEFORE YOU DIG, GRADE OR EXCAVATE FOR THE MARKING OF UNDERGROUND MEMBER UTILITIES.

CORE ASSUMES NO RESPONSIBILITY FOR EXISTING UTILITY LOCATIONS (HORIZONTAL AND VERTICAL) OR ANY EXISTING LOCATIONS (HORIZONTAL AND VERTICAL) WITHIN EXISTING FROM THE BEST AVAILABLE INFORMATION. IT IS, HOWEVER, THE LOCATION OF ALL UTILITIES FROM TO THE SHOWN COMPENSATION OF ANY CONSTRUCTION ACTIVITIES.

#	REVISION DESCRIPTION	DATE	BY
10	ORIGINAL EXHIBIT	12/17/19	AR

**KINGS POINT FILING NO. 2**  
AURORA, COLORADO

CONTEXTUAL SITE PLAN  
SUMMARY OF CHANGES

DESIGNED BY:	AR
DRAWN BY:	AR
CHECKED BY:	RH
JOB NO.	14-030
SHEET	1 OF 1