

SITE PLAN W/ ADJUSTMENTS  
GATEWAY AT FITZSIMONS  
THE PLAZA FITZSIMONS SUBDIVISION FILING NO. 1  
SITUATED IN THE NORTHWEST QUARTER OF SECTION 1, TOWNSHIP 4 SOUTH, RANGE 67 WEST OF THE SIXTH PRINCIPAL  
MERIDIAN, CITY OF AURORA, COUNTY OF ARAPAHOE, STATE OF COLORADO

WINDOW AREA SCHEDULE		
Height	Width	Count
4' - 6"	3' - 6"	8
4' - 6"	6' - 0"	8
4' - 6"	8' - 0"	119
6' - 0"	8' - 0"	20
Grand total: 155		9.0%
Total Window Area:		5,586.00 SF
Total Facade Area:		62,035.28 SF

CURTAIN WALL AREA SCHEDULE		
Family	Area	
Curtain Wall	11,475.20 SF	
Grand total: 62	11,475.20 SF	18.5%
Total Facade Area:		62,035.28 SF

VISIBLE FACADE - ACCENT MATERIAL SF %			
ACCENT MATERIAL	SQUARE FOOTAGE	TOTAL ROW FACING FACADE SF	% OF ROW FACING FACADE
NICHIHA - VINTAGE WOOD - CEDAR	1485.60 SF	23,731.24 SF	6.3%
METAL FIN - WINDOW TREATMENT	120 SF	23,731.24 SF	0.5%

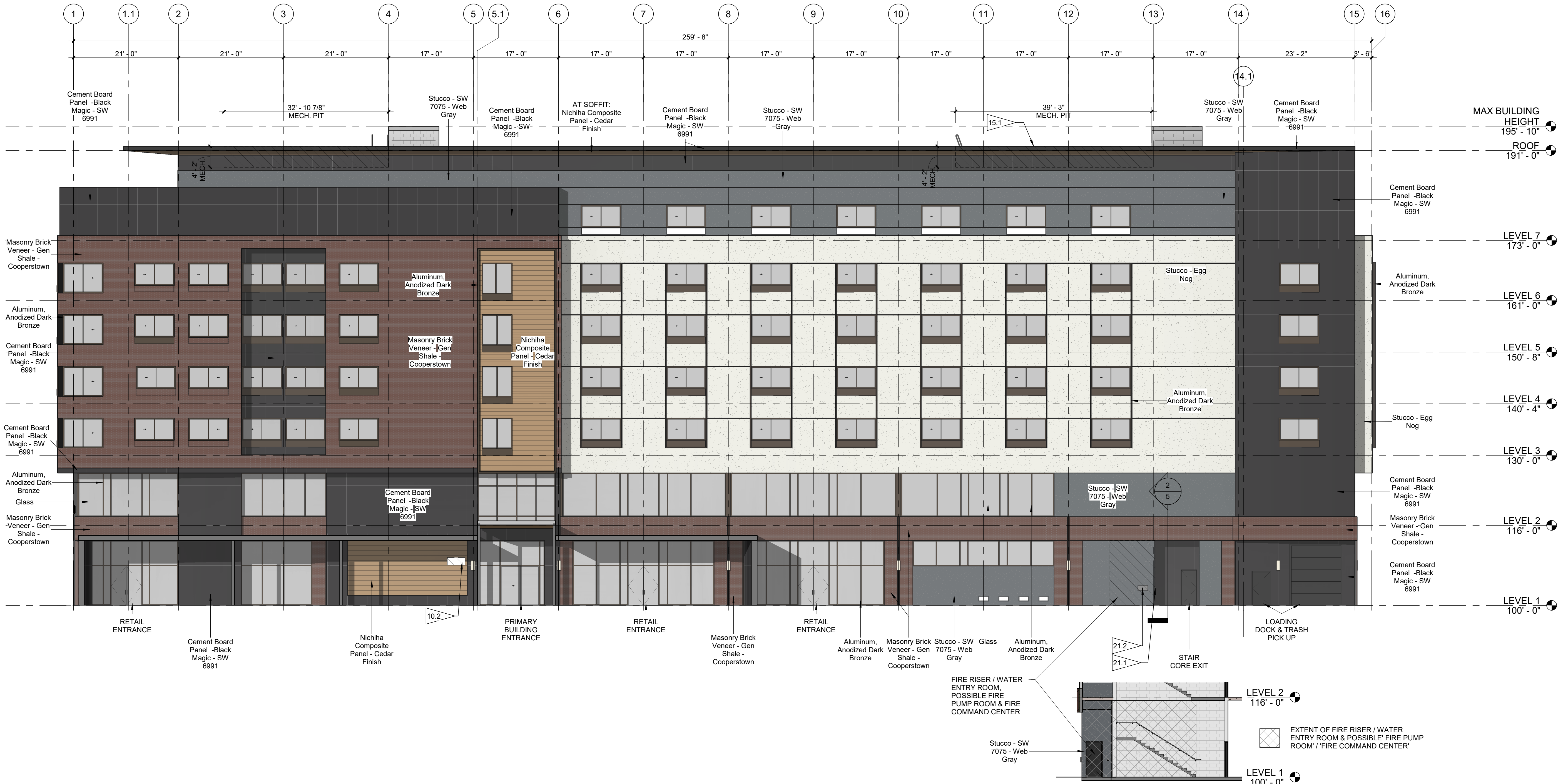
EXTERIOR FACADE MATERIAL AREA SCHEDULE		
Material: Name	Material: Area	
Cement Board Panel -Black Magic - SW 6991	13,493.25 SF	21.8%
Masonry Brick Veneer - Gen Shale - Cooperstown	10,998.21 SF	17.7%
Nichiha Composite Panel - Cedar Finish	2,393.62 SF	3.9%
Stucco - Egg Nog	14,340.46 SF	23.1%
Stucco - SW 7075 - Web Gray	3,748.54 SF	6.0%
	44,974.08 SF	72.5%
*1ST LEVEL FACADE AREA =	10,970.70 SF	
Total Facade Area:	62,035.28 SF	

FLAGNOTES PER SHEET

- 10.2 ADDRESS NUMBERS PER CITY CODE OF THE CITY OF AURORA CH 126 ARTICLE VII.  
15.1 RECESSED MECHANICAL PIT FOR ROOF MOUNTED MECHANICAL EQUIPMENT.  
21.1 KNOX BOX PER CITY OF AURORA REQUIREMENTS.  
21.2 FDC WITH APPROVED CAPS.

MATERIAL LEGEND

- CEMENT BOARD PANEL  
MFR: JAMES HARDIE  
COLOR: SW 6991 - BLACK MAGIC
- MASONRY BRICK VENEER  
MFR: GENERAL SHALE  
COLOR: COOPERSTOWN
- STUCCO - FINE FINISH  
MFR: SENERGY  
COLOR: EGG NOG #3084
- STUCCO - FINE FINISH  
MFR: SENERGY  
COLOR: SW 7075 - WEB GRAY
- FIBER CEMENT - VINTAGE WOOD  
MFR: NICHIHA  
COLOR: CEDAR
- FIBER CEMENT SOFFIT - VINTAGE WOOD  
MFR: NICHIHA  
COLOR: CEDAR
- GLASS PANEL GUARDRAIL  
MFR:  
RAIL COLOR: DARK BRONZE
- METAL FIN - WINDOW TREATMENT  
MFR:  
COLOR: DARK BRONZE
- STOREFRONT CURTAIN WALL SYSTEM  
MULLION COLOR: DARK BRONZE ANODIZED



1 SOUTH ELEVATION - SDP  
3/32" = 1'-0"

2 WATER / FIRE COMMAND  
3/32" = 1'-0"

SITE PLAN W/ ADJUSTMENTS  
GATEWAY AT FITZSIMONS  
THE PLAZA FITZSIMONS SUBDIVISION FILING NO. 1  
SITUATED IN THE NORTHWEST QUARTER OF SECTION 1, TOWNSHIP 4 SOUTH, RANGE 67 WEST OF THE SIXTH PRINCIPAL  
MERIDIAN, CITY OF AURORA, COUNTY OF ARAPAHOE, STATE OF COLORADO

WINDOW AREA SCHEDULE		
Height	Width	Count
4' - 6"	3' - 6"	8
4' - 6"	6' - 0"	8
4' - 6"	8' - 0"	119
6' - 0"	8' - 0"	20
Grand total: 155		9.0%
Total Window Area:		5,586.00 SF
Total Facade Area:		62,035.28 SF

CURTAIN WALL AREA SCHEDULE		
Family	Area	
Curtain Wall	11,475.20 SF	
Grand total: 62	11,475.20 SF	18.5%
Total Facade Area:		62,035.28 SF

VISIBLE FACADE - ACCENT MATERIAL SF %			
ACCENT MATERIAL	SQUARE FOOTAGE	TOTAL ROW FACING FACADE SF	% OF ROW FACING FACADE
NICHHA - VINTAGE WOOD - CEDAR	1485.60 SF	23,731.24 SF	6.3%
METAL FIN - WINDOW TREATMENT	120 SF	23,731.24 SF	0.5%

EXTERIOR FACADE MATERIAL AREA SCHEDULE		
Material: Name	Material: Area	
Cement Board Panel -Black Magic - SW 6991	13,493.25 SF	21.8%
Masonry Brick Veneer - Gen Shale - Cooperstown	10,998.21 SF	17.7%
Nichiha Composite Panel - Cedar Finish	2,393.62 SF	3.9%
Stucco - Egg Nog	14,340.46 SF	23.1%
Stucco - SW 7075 - Web Gray	3,748.54 SF	6.0%
	44,974.08 SF	72.5%
*1ST LEVEL FACADE AREA =	10,970.70 SF	
Total Facade Area:	62,035.28 SF	

FLAGNOTES PER SHEET

- 10.2 ADDRESS NUMBERS PER CITY CODE OF THE CITY OF AURORA CH 126 ARTICLE VII.  
15.1 RECESSED MECHANICAL PIT FOR ROOF MOUNTED MECHANICAL EQUIPMENT.  
21.1 KNOX BOX PER CITY OF AURORA REQUIREMENTS.

MATERIAL LEGEND

- CEMENT BOARD PANEL  
MFR: JAMES HARDIE  
COLOR: SW 6991 - BLACK MAGIC
- MASONRY BRICK VENEER  
MFR: GENERAL SHALE  
COLOR: COOPERSTOWN
- STUCCO - FINE FINISH  
MFR: SENERGY  
COLOR: EGG NOG #3084
- STUCCO - FINE FINISH  
MFR: SENERGY  
COLOR: SW 7075 - WEB GRAY
- FIBER CEMENT - VINTAGE WOOD  
MFR: NICHHA  
COLOR: CEDAR
- FIBER CEMENT SOFFIT - VINTAGE WOOD  
MFR: NICHHA  
COLOR: CEDAR
- GLASS PANEL GUARDRAIL  
RAIL COLOR: DARK BRONZE
- METAL FIN - WINDOW TREATMENT  
MFR: NICHHA  
COLOR: DARK BRONZE
- STOREFRONT CURTAIN WALL SYSTEM  
MULLION COLOR: DARK BRONZE ANODIZED



1 NORTH ELEVATION - SDP  
3/32" = 1'-0"

PROOF CIVIL  
consulting engineers  
800 W. 8th Ave | Ste 104 | Denver, CO 80204

SEAL: **PROOF CIVIL** studio  
FOR AND ON BEHALF OF PROOF CIVIL CO.

REVISIONS		NO.	DATE	DESCRIPTION
19-11	11/07/2019	1	02/28/2020	RESPONSE TO COMMENTS
		2	03/11/2020	SD PRICING SET
		3	05/05/2020	RESPONSE TO COMMENTS
PROJ. NO.:	DATE:	DRAWN BY:	CHECKED BY:	CO
		RW	KV	

GATEWAY AT FITZSIMONS  
SITE PLAN W/ ADJUSTMENTS

AURORA

DRAWING NO. 6

SITE PLAN W/ ADJUSTMENTS  
GATEWAY AT FITZSIMONS  
THE PLAZA FITZSIMONS SUBDIVISION FILING NO. 1  
SITUATED IN THE NORTHWEST QUARTER OF SECTION 1, TOWNSHIP 4 SOUTH, RANGE 67 WEST OF THE SIXTH PRINCIPAL  
MERIDIAN, CITY OF AURORA, COUNTY OF ARAPAHOE, STATE OF COLORADO

WINDOW AREA SCHEDULE		
Height	Width	Count
4' - 6"	3' - 6"	8
4' - 6"	6' - 0"	8
4' - 6"	8' - 0"	119
6' - 0"	8' - 0"	20
Grand total: 155		9.0%
Total Window Area:		5,586.00 SF
Total Facade Area:		62,035.28 SF

CURTAIN WALL AREA SCHEDULE		
Family	Area	
Curtain Wall	11,475.20 SF	
Grand total: 62	11,475.20 SF	18.5%
Total Facade Area:		62,035.28 SF

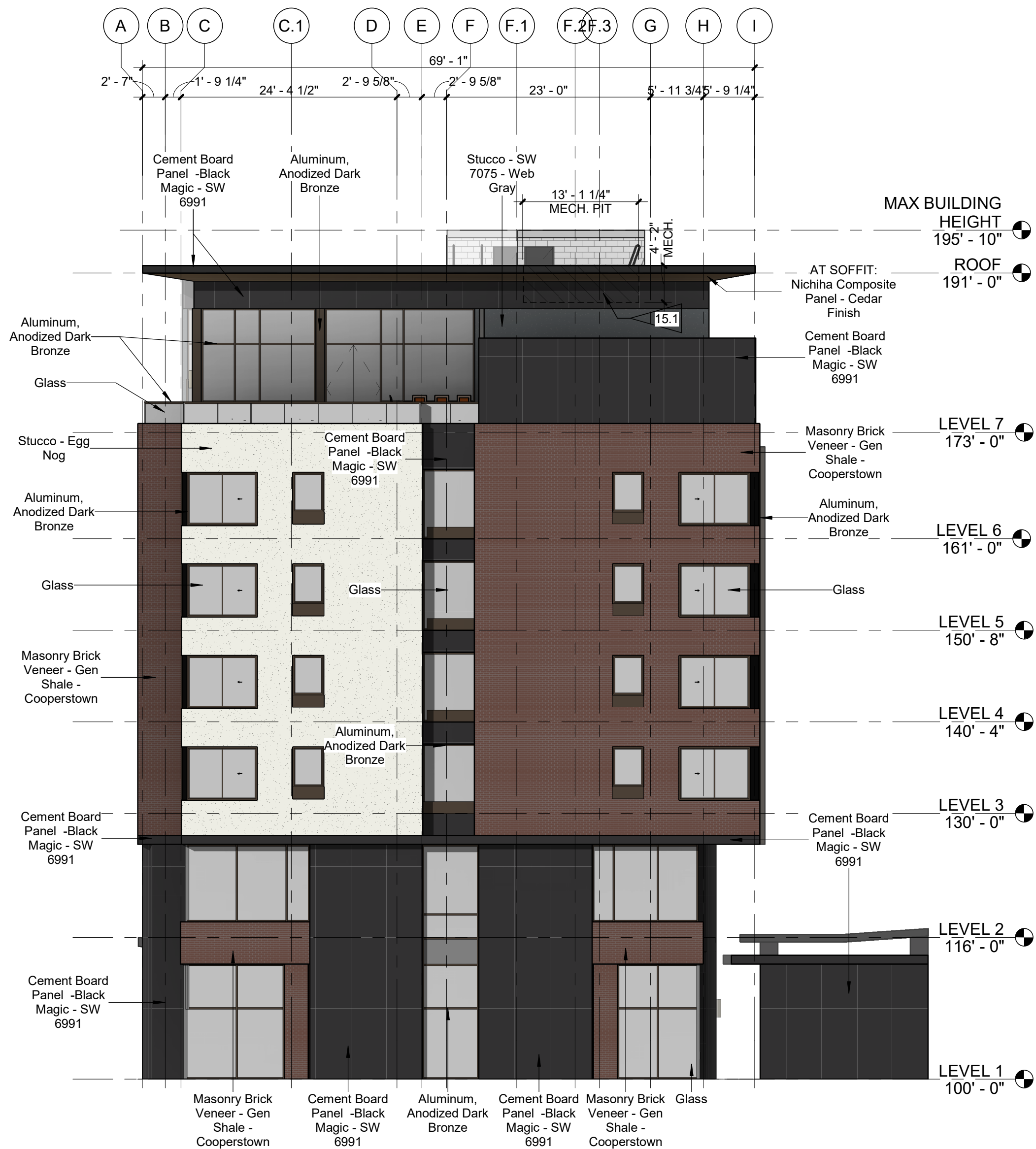
VISIBLE FACADE - ACCENT MATERIAL SF %			
ACCENT MATERIAL	SQUARE FOOTAGE	TOTAL ROW FACING FACADE SF	% OF ROW FACING FACADE
Nichiha - VINTAGE WOOD - CEDAR	1485.60 SF	23,731.24 SF	6.3%
METAL FIN - WINDOW TREATMENT	120 SF	23,731.24 SF	0.5%

EXTERIOR FACADE MATERIAL AREA SCHEDULE		
Material: Name	Material: Area	
Cement Board Panel -Black Magic - SW 6991	13,493.25 SF	21.8%
Masonry Brick Veneer - Gen Shale - Cooperstown	10,998.21 SF	17.7%
Nichiha Composite Panel - Cedar Finish	2,393.62 SF	3.9%
Stucco - Egg Nog	14,340.46 SF	23.1%
Stucco - SW 7075 - Web Gray	3,748.54 SF	6.0%
	44,974.08 SF	72.5%
*1ST LEVEL FACADE AREA =		
Total Facade Area:		62,035.28 SF

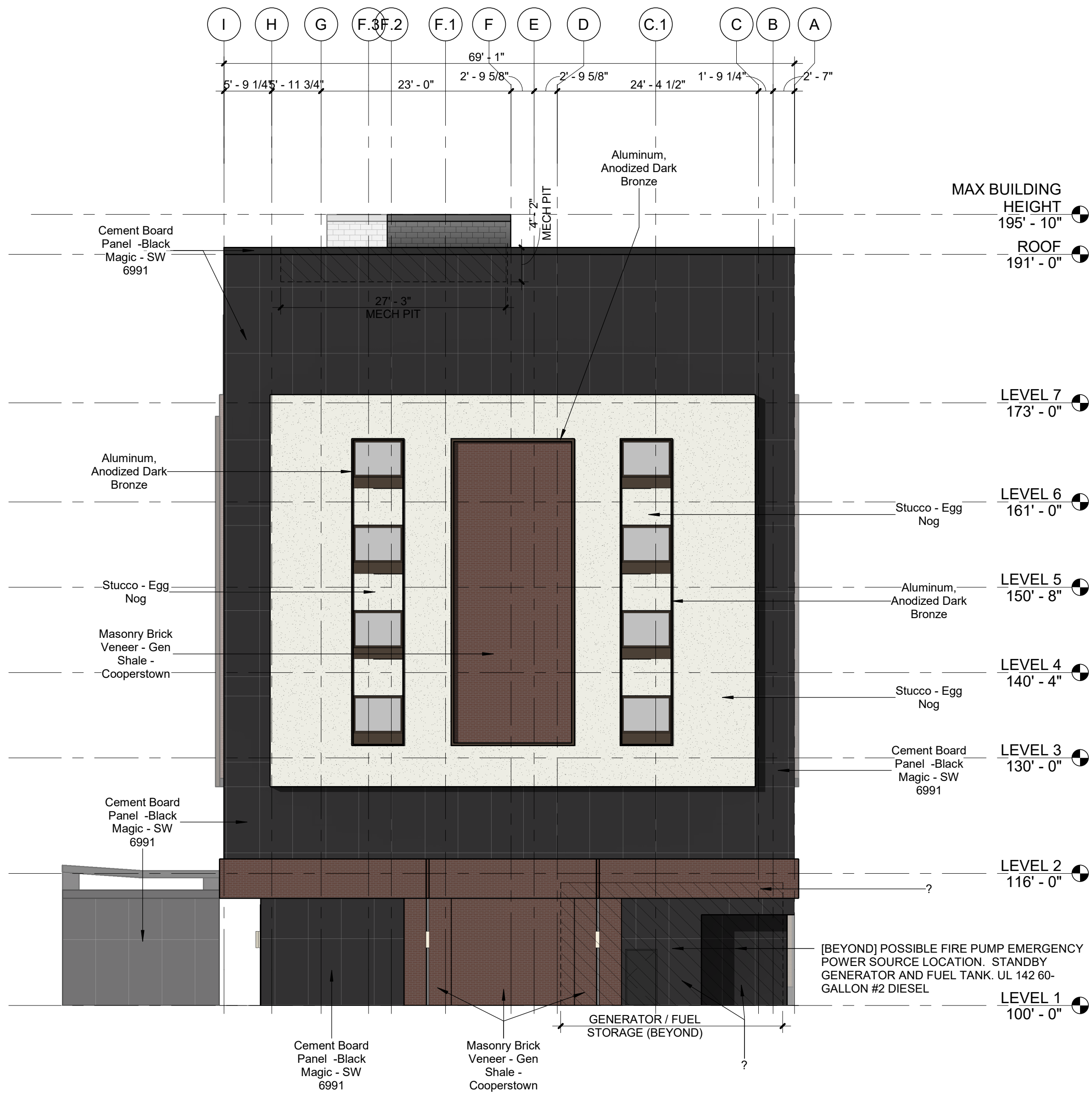
FLAGNOTES PER SHEET

15.1 RECESSED MECHANICAL PIT FOR ROOF MOUNTED MECHANICAL EQUIPMENT.

	CEMENT BOARD PANEL MFR: JAMES HARDIE COLOR: SW 6991 - BLACK MAGIC
	MASONRY BRICK VENEER MFR: GENERAL SHALE COLOR: COOPERSTOWN
	STUCCO - FINE FINISH MFR: SENERGY COLOR: EGG NOG #3084
	STUCCO - FINE FINISH MFR: SENERGY COLOR: SW 7075 - WEB GRAY
	FIBER CEMENT - VINTAGE WOOD MFR: NICHIIHA COLOR: CEDAR
	FIBER CEMENT SOFFIT - VINTAGE WOOD MFR: NICHIIHA COLOR: CEDAR
	GLASS PANEL GUARDRAIL MFR: RAIL COLOR: DARK BRONZE
	METAL FIN - WINDOW TREATMENT MFR: COLOR: DARK BRONZE
	STOREFRONT CURTAIN WALL SYSTEM MULLION COLOR: DARK BRONZE ANODIZED



2 WEST ELEVATION - SDP  
3/32" = 1'-0"



1 EAST ELEVATION - SDP  
3/32" = 1'-0"

REVISIONS

NO.	DATE	DESCRIPTION
1	02/28/2020	RESPONSE TO COMMENTS
2	03/11/2020	SD PRICING SET
3	05/05/2020	RESPONSE TO COMMENTS

PROJ. NO.: 19-11

DATE: 11/07/2019

DRAWN BY: RW

CHECKED BY: KV

CO

GATEWAY AT FITZSIMONS  
SITE PLAN W/ ADJUSTMENTS

AURORA

DRAWING NO.