

Exhibit 19.1 - Rush South Water Delivery Method

Fresh water used for completion operations at the Rush South location will be transported by a temporary water line ("Layflat").

Layflat description: Temporary, above-ground water supply line, typically 12" in diameter and typically made of synthetic rubber or similar "hose" material. They are used for the transfer of water from an identified water source to support company's hydraulic fracturing operations.

"Facilities" associated with use of Layflat lines include the following:

- In-line pumps
- Spools
- Secondary containment equipment
- Ramps

Equipment used for installation may include pick-up trucks, flatbed trailers, skid steer, and skid steer mounted reel winder.

Layflat lines are laid on the surface, at grade and do not require excavation. They do not require staking in order to secure them from movement and are placed at least 10' from the edge of the roadway.

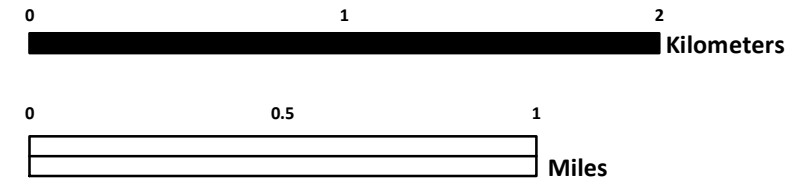
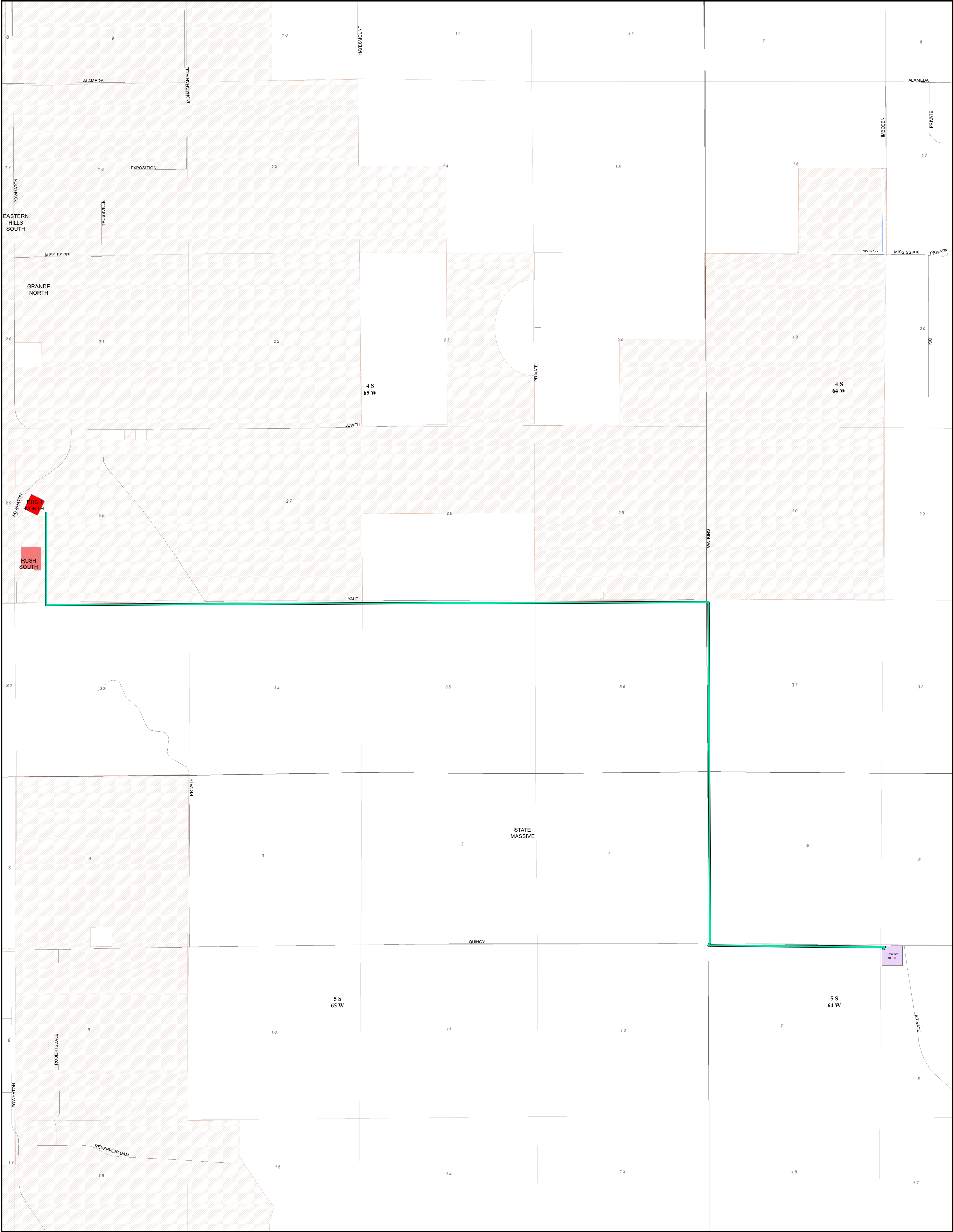
Deployment and retrieval of a Layflat line: a truck carrying spools of hose follows along-side a skid steer tractor. The skid steer carries and straddles the spool of Layflat line and releases the hose by the reel rolling forward. Victaulic couplings are used to assemble segments of Layflat hose. The process of retrieving the Layflat hose involves the same equipment and process in reverse (reel rolling backward). When Layflat lines run alongside road right of way, traffic control plans are implemented to manage and mandate safety procedures.

Route Description

The scope of this fresh water transfer will originate from Sky Ranch Pond located in Section 10, T4S, R65W, Arapahoe County, Colorado. *The route described below is contingent upon several agreements with various parties and is subject to change.*

Rush South

- From Lowry Ridge: to Quincy Rd. due west, then north on Watkins Rd. via Arapahoe County permits
- Then, west along Yale via State Land Board permit and due north via private landowner agreement to enter pad location



Legend

RUSH NORTH

RUSH SOUTH

Rush LFL

Aurora City Limits



For informational purposed only, not prepared by survey
For Internal Use Only, all other uses require written approval.

ConocoPhillips

**RUSH NORTH & SOUTH
LAY FLAT LINE ROUTE**

Scale: 1:24,000

Author: Leon Hulon

Date Saved: 8/20/2019