

LAREDO BUSINESS PARK

PLANNED BUILDING GROUP

LEGEND

TREES

KEY	COMMON NAME	BOTANICAL NAME	QUANTITY	SIZE
PP ₁	PINION PINE	PINUS CEMBROIDES EDULIS	21	6'-8'
PP ₂	PONDEROSA PINE	PINUS PONDEROSA	10	6'-8'
CC	COTTONLESS COTONWOOD	POPULUS SIOUX-LAND	4	2"-2 1/2"
SM	SILVER MAPLE	ACER SACCHARINUM	2	2"-2 1/2"
SLL	SKYLINE LOCUST	GLIODISTEA TRIACANTHOS 'SKYLINE'	7	2"-2 1/2"
A	ASPEN	POPULUS TREMULOIDES	112	6'-8' HT. IN GROUPING
NM	NORWAY MAPLE	ACER PLATANOIDES	10	2"-2 1/2"
APA	AUTUMN PURPLE ASH	FRAXINUS AMERICANA AUTUMN PURPLE	4	2"-2 1/2"
AL	AMERICAN LINDEN	TILIA AMERICANA	6	2"-2 1/2"

SHRUBS

TB	TAMMY BUSH	JUNIPERUS SABINA TAMARICIFOLIA	140	5 GAL.
GM	GOLDEN MOCKORANGE	PHILADELPHUS CORONARIUS 'AUREUS'	4	5 GAL.
CB	COLUMNAR BUCKTHORN	RHAMNUS FRANKLII 'COLUMNARIS'	18	5 GAL.

500 KENTUCKY BLUEGRASS

GRAVEL 3/4"-1 1/2" ROCK w/ 10 MIL VISQUEEN
RIVER BOULDERS 1 1/2"-6" w/ 10 MIL VISQUEEN

GENERAL NOTES

Minimum Sizes - Deciduous Trees - 2" Cal.
Evergreen Trees - 6'-0" It.
Shrubs - 5 Gal.
Rock - 3/4"
Visqueen - 10 Mil

Irrigation shall be by sprinkler system on timers and drip system in rock areas.

Staking requirements for trees require 3 #11 guy wires.

Landscaping to be installed prior to Certificate of Occupancy

Soil preparation for trees and shrubs shall be to first prepare a hole large enough to accommodate the roots for root ball with extra space all around, fill space around roots with topsoil enriched with fertilizer so feeder cells at the end of the root system will have a good medium for growth. Soil preparation for sod (lawn area) shall be to first put 2" minimum peat moss and roto-till into 6" of soil. This will help to hold the ground moisture and aerate the soil for better growth. Top layer should be minimum 4" topsoil to provide storage of one inch of moisture PH 5.5. to 6.5.

ALL UTILITY EASEMENTS MUST REMAIN UNOBTSTRUCTED AND FULLY ACCESSIBLE ALONG THEIR ENTIRE LENGTH FOR MAINTENANCE EQUIPMENT.

PLANNING DEPARTMENT

DATE SUBMITTED 8-1-84

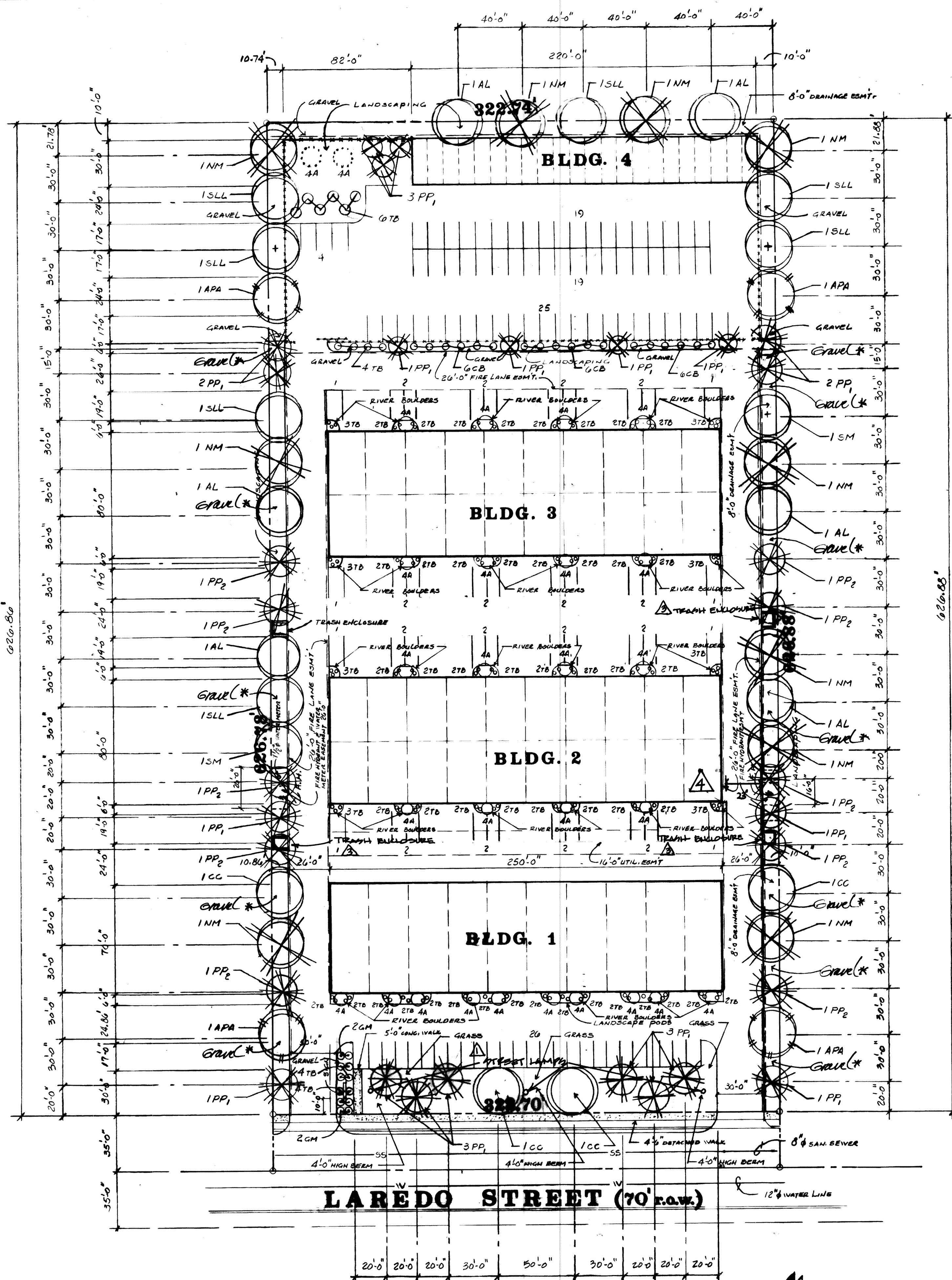
DATE REVISED 10-10-84

S M Development
700 Billings St. Unit "E"
Aurora, Colo. 80011

ND & E Enterprises (Landscapers)
595 Nueces Way, Unit "E"
Aurora, Colo. 80011

Laredo Business Park

84-6075-1/15



ADM. AMDT. 5-6-85

ADD (8) - 18' COACH LAMP STREET LAMPS NEAR WEST PROPERTY LINE.

PAINTING OF FOOT TOP UNITS TO MATCH BUILDING COLOR.

ADM. AMDT. 5-20-85

ELIMINATION OF (2) TRASH ENCLOSURES (8'x10') AND THE ADDITION OF (2) TRASH ENCLOSURES IN BETTER LOCATIONS. TYPICAL (8'x10') - 6' HIGH (3000 BENCH) AS NOTED.

MOVE THE PARKING SPACE LINE TO 23 FEET FROM THE CURB (By the TRASH ENCLOSURE). THE PARKING SPACE LINE WILL BE EVEN WITH THE BOLLARDS ON THE SIDE OF THE BUILDING. THIS WILL ALLOW 2 PARKING SPACES AND ROOM TO OPEN AND USE THE OVER HEAD DOOR.

ADM. AMDTS. 5-6-85 / 5-20-85, Mylar Change 6/25/87 / Mylar Change 10/28/10

LAREDO BUSINESS PARK

PLANNED BUILDING GROUP

LEGEND

TREES

KEY	COMMON NAME	BOTANICAL NAME	QUANTITY	SIZE
PP ₁	PINION PINE	Pinus cembroides edulis	21	6'-8'
PP ₂	PONDEROSA PINE	Pinus ponderosa	10	6'-8'
CC	COTTONLESS COTONWOOD	Populus 'SIoux-LAND'	4	2"-2 1/2"
SM	SILVER MAPLE	Acer saccharinum	2	2"-2 1/2"
SLL	SKYLINE LOCUST	Gleditsia triacanthos 'SKYLINE'	7	2"-2 1/2"
A	ASPEN	Populus tremuloides	112	6'-8' HT. IN GROUPING
NM	NORWAY MAPLE	Acer platanooides	10	2"-2 1/2"
APA	AUTUMN PURPLE ASH	Fraxinus americana autumn purple	4	2"-2 1/2"
AL	AMERICAN LINDEN	Tilia americana	6	2"-2 1/2"

SHRUBS

TB	TAMMY BUSH	Juniperus sabina tamaricifolia	140	5 GAL.
GM	GOLDEN MOCKORANGE	Philadelphus coronarius 'aureus'	4	5 GAL.
CB	COLUMNAR BUCKTHORN	Rhamnus franchua 'columnaris'	18	5 GAL.

500 KENTUCKY BLUEGRASS

GRAVEL 3/4"-1 1/2" ROCK w/ 10 MIL VISQUEEN
RIVER BOULDERS 1 1/2"-6" w/ 10 MIL VISQUEEN

GENERAL NOTES

Minimum Sizes - Deciduous Trees - 2" Cal.
Evergreen Trees - 6'-0" It.
Shrubs - 5 Gal.
Rock - 3/4"
Visqueen - 10 Mil

Irrigation shall be by sprinkler system on timers and drip system in rock areas.

Staking requirements for trees require 3 #11 guy wires.

Landscaping to be installed prior to Certificate of Occupancy

Soil preparation for trees and shrubs shall be to first prepare a hole large enough to accommodate the roots for root ball with extra space all around, fill space around roots with topsoil enriched with fertilizer so feeder cells at the end of the root system will have a good medium for growth. Soil preparation for sod (lawn area) shall be to first put 2" minimum peat moss and roto-till into 6" of soil. This will help to hold the ground moisture and aerate the soil for better growth. Top layer should be minimum 4" topsoil to provide storage of one inch of moisture PH 5.5. to 6.5.

ALL UTILITY EASEMENTS MUST REMAIN UNOBTSTRUCTED AND FULLY ACCESSIBLE ALONG THEIR ENTIRE LENGTH FOR MAINTENANCE EQUIPMENT.

PLANNING DEPARTMENT

DATE SUBMITTED 8-1-84

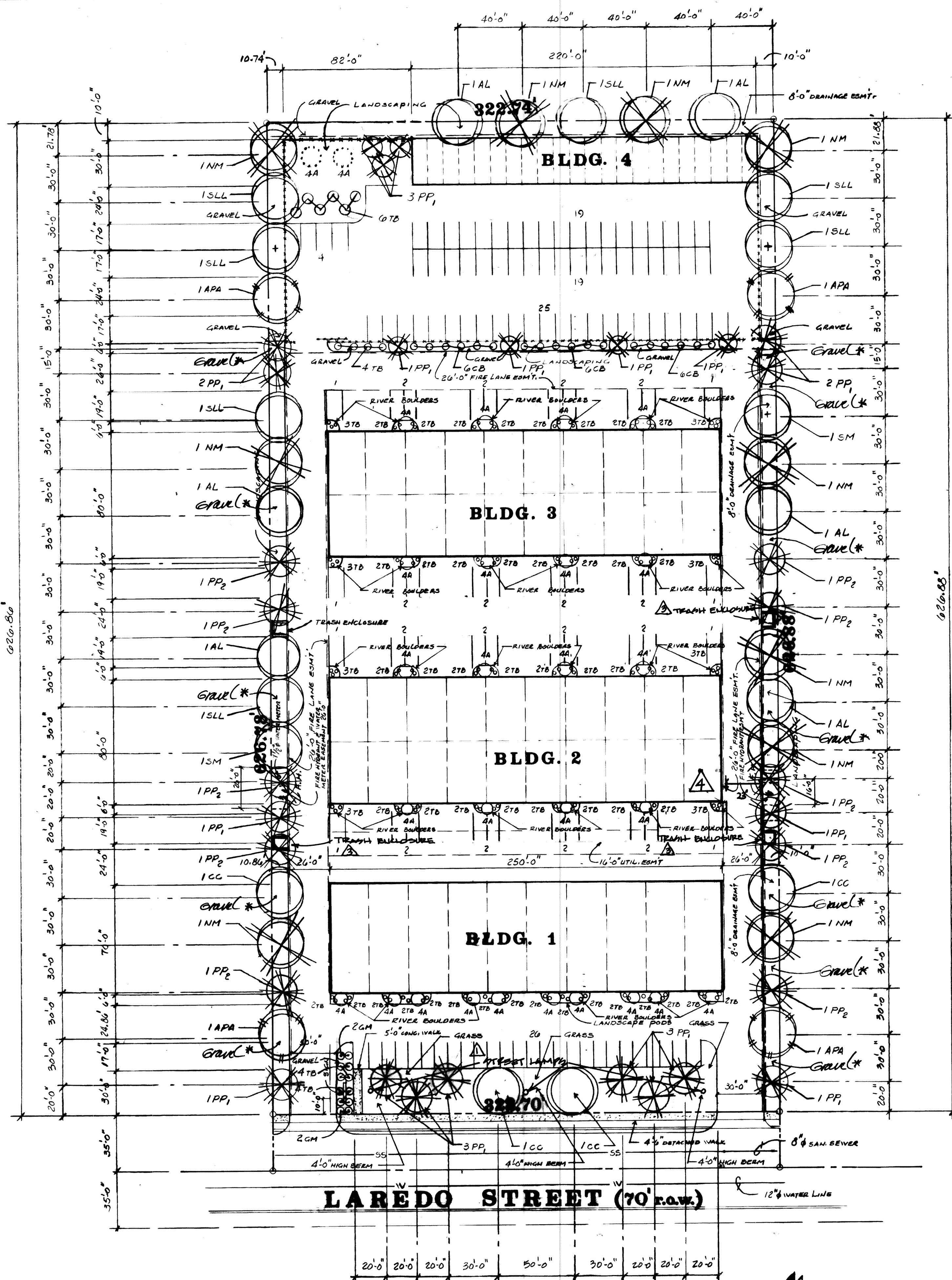
DATE REVISED 10-10-84

S M Development
700 Billings St. Unit "E"
Aurora, Colo. 80011

ND & E Enterprises (Landscapers)
595 Nueces Way, Unit "E"
Aurora, Colo. 80011

Laredo Business Park

84-6075-1/15



ADM. AMDT. 5-6-85

ADD (8) - 18' COACH LAMP STREET LAMPS NEAR WEST PROPERTY LINE.

PAINTING OF FOOT TOP UNITS TO MATCH BUILDING COLOR.

ADM. AMDT. 5-20-85

ELIMINATION OF (2) TRASH ENCLOSURES (8'x10') AND THE ADDITION OF (2) TRASH ENCLOSURES IN BETTER LOCATIONS. TYPICAL (8'x10') - 6' HIGH (3000 BENCH) IS NOTED.

MOVE THE PARKING SPACE LINE TO 23 FEET FROM THE CURB (By the TRASH ENCLOSURE). THE PARKING SPACE LINE WILL BE EVEN WITH THE BALDADES ON THE SIDE OF THE BUILDING. THIS WILL ALLOW 2 PARKING SPACES AND ROOM TO OPEN AND USE THE OVER HEAD DOOR.

ADM. AMDTS. 5-6-85 / 5-20-85, Mylar Change 6/25/87 / Mylar Change 10/28/10