

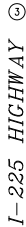


T-MOBILE SITE #: DN01644A
SITE NAME: LILLIBRIDGE
SITE ADDRESS: 1550 S. POTOMAC STREET
AURORA, CO 80012

APPROVAL SIGNATURE BLOCK

THE FOLLOWING PARTIES HAVE REVIEWED THESE DOCUMENTS.
ALL DOCUMENTS ARE SUBJECT TO REVISION BY THE LOCAL ZONING
BUILDING DEPARTMENTS AND MAY IMPOSE CHANGES OR MODIFICATIONS.

<div><div></div><div>PROJECT MANAGER (PRINT)</div></div>	<div><div></div><div>PROJECT MANAGER</div></div>	<div><div><input type="checkbox"/> APPROVED <input type="checkbox"/> REJECTED</div></div>	<div><div></div><div>DATE</div></div>
<div><div></div><div>RF ENGINEER (PRINT)</div></div>	<div><div></div><div>RF ENGINEER</div></div>	<div><div><input type="checkbox"/> APPROVED <input type="checkbox"/> REJECTED</div></div>	<div><div></div><div>DATE</div></div>
<div><div></div><div>SITE ACQUISITION (PRINT)</div></div>	<div><div></div><div>SITE ACQUISITION</div></div>	<div><div><input type="checkbox"/> APPROVED <input type="checkbox"/> REJECTED</div></div>	<div><div></div><div>DATE</div></div>
<div><div></div><div>T-MOBILE QUALITY ASSURANCE (PRINT)</div></div>	<div><div></div><div>T-MOBILE QUALITY ASSURANCE</div></div>	<div><div><input type="checkbox"/> APPROVED <input type="checkbox"/> REJECTED</div></div>	<div><div></div><div>DATE</div></div>



THIS DOES NOT REPRESENT A MONUMENTED SURVEY.
REFERENCE IS MADE TO A COMMITMENT FOR TITLE INSURANCE, NUMBER 01-17013950-015, ISSUED BY OLD REPUBLIC NATIONAL TITLE INSURANCE COMPANY, AND HAVING AN EFFECTIVE DATE OF FEBRUARY 23, 2017. THIS SURVEYOR HAS MADE NO INVESTIGATION OR INDEPENDENT SEARCH FOR EASEMENTS OF RECORD, ENCUMBRANCES, RESTRICTIVE COVENANTS, OWNERSHIP TITLE EVIDENCE, OR ANY OTHER FACTS THAT AN ACCURATE AND CURRENT TITLE SEARCH MAY DISCLOSE. THE LESSOR'S LEGAL DESCRIPTION AND RECORD BOUNDARY ARE SHOWN HEREON FOR REFERENCE ONLY.
THIS SURVEY DOES NOT CONSTITUTE A BOUNDARY SURVEY OF THE LESSOR'S PROPERTY.

BURIED UTILITIES AND/OR PIPELINES SHOWN HEREON ARE PER VISABLE AND APPARENT SURFACE EVIDENCE, RECORD DRAWINGS OF THE CONSTRUCTED UTILITY LINES OBTAINED FROM RELIABLE AND RESPONSIBLE SOURCES NOT CONNECTED WITH ALTURA LAND CONSULTANTS, LLC, OR MARKINGS PROVIDED BY AN INDEPENDENT LOCATING CONTRACTOR. NO GUARANTEE OR WARRANTY, EITHER EXPRESSED OR IMPLIED, IS MADE AS TO THE ACCURACY OR THOROUGHNESS OF SUCH INFORMATION. IF ANY UNRECORDED OR UNRECORDED UTILITIES OR PIPELINES ARE REQUIRED, THE LOCATION OF ANY UTILITY OR PIPELINE WILL HAVE TO BE VERIFIED BY FIELD POTHOLING. ALTURA LAND CONSULTANTS, LLC AND THE SURVEYOR OF RECORD SHALL NOT BE HELD LIABLE FOR THE LOCATION OF OR THE FAILURE TO NOTE THE LOCATION OF NON-VISIBLE UTILITIES OR PIPELINES.


T-Mobile
 stick together

PROJECT INFORMATION:

LILLIBRIDGE

DN01644

1550 S. POTOMAC ST.
AURORA, CO. 80012
COUNTY OF ARAPAHOE

CURRENT ISSUE DATE:

3/23/17


ISSUED FOR:

DESIGN

REV: DATE: DESCRIPTION: BY:

0	3/23/17	SUBMITTAL	JT

PLAN PREPARED BY:



Altura

Land Consultants


6551 S. Revere Pkwy., Suite 165
Centennial, CO. 80111
Phone: (720) 488-1303 ~ Fax: (720) 488-1306

LICENSURE:

DRAWN BY: CHK.: APV.:

JT	JAL	JAL
----	-----	-----

PROJECT MANAGER/ARCHITECT:



POWDER RIVER

Development Services, LLC

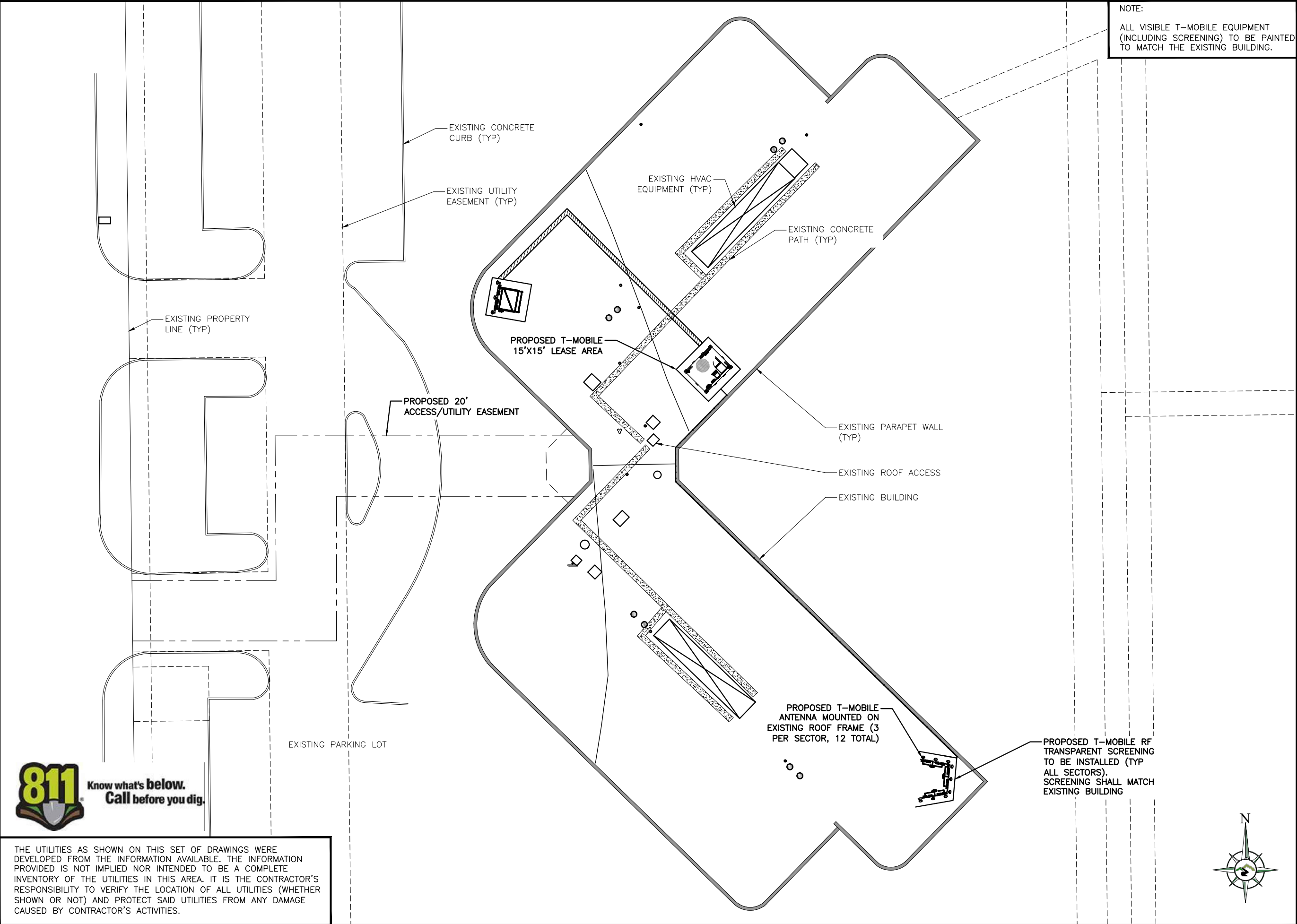
www.powderriverdev.com

SHEET TITLE:

TOPOGRAPHIC
SURVEY

SHEET NUMBER: REVISION:

LS1	0
SHEET 1 OF 1 SHEETS	17066



THE UTILITIES AS SHOWN ON THIS SET OF DRAWINGS WERE DEVELOPED FROM THE INFORMATION AVAILABLE. THE INFORMATION PROVIDED IS NOT IMPLIED NOR INTENDED TO BE A COMPLETE INVENTORY OF THE UTILITIES IN THIS AREA. IT IS THE CONTRACTOR'S RESPONSIBILITY TO VERIFY THE LOCATION OF ALL UTILITIES (WHETHER SHOWN OR NOT) AND PROTECT SAID UTILITIES FROM ANY DAMAGE CAUSED BY CONTRACTOR'S ACTIVITIES.

PROPOSED OVERALL SITE PLAN

15'015'

SCALE: 1" = 15' (24x36)
(OR) 1" = 30' (11x17)



T-MOBILE WEST, LLC
18400 E. 22ND AVENUE
AURORA, CO 80011



POWDER RIVER
Engineering Services, LLC
www.powderriverdev.com

LICENSE #: N/A

REVISIONS			
REV	DATE	DESCRIPTION	INT
A	09/18/17	ISSUED FOR REVIEW 90%	BCM

PRELIMINARY
NOT FOR
CONSTRUCTION

THESE PLANS AND SPECIFICATIONS, AS INSTRUMENTS OF SERVICE, ARE AND SHALL REMAIN THE PROPERTY OF POWDER RIVER DEVELOPMENT SERVICES, LLC WHETHER THE PROJECTS FOR WHICH THEY ARE MADE ARE EXECUTED OR NOT. THESE DRAWINGS AND SPECIFICATIONS SHALL NOT BE USED BY ANY PERSON OR ENTITY ON OTHER PROJECTS WITHOUT PRIOR WRITTEN CONSENT OF THE ENGINEER.

SITE INFORMATION

DN01644A

LILLIBRIDGE

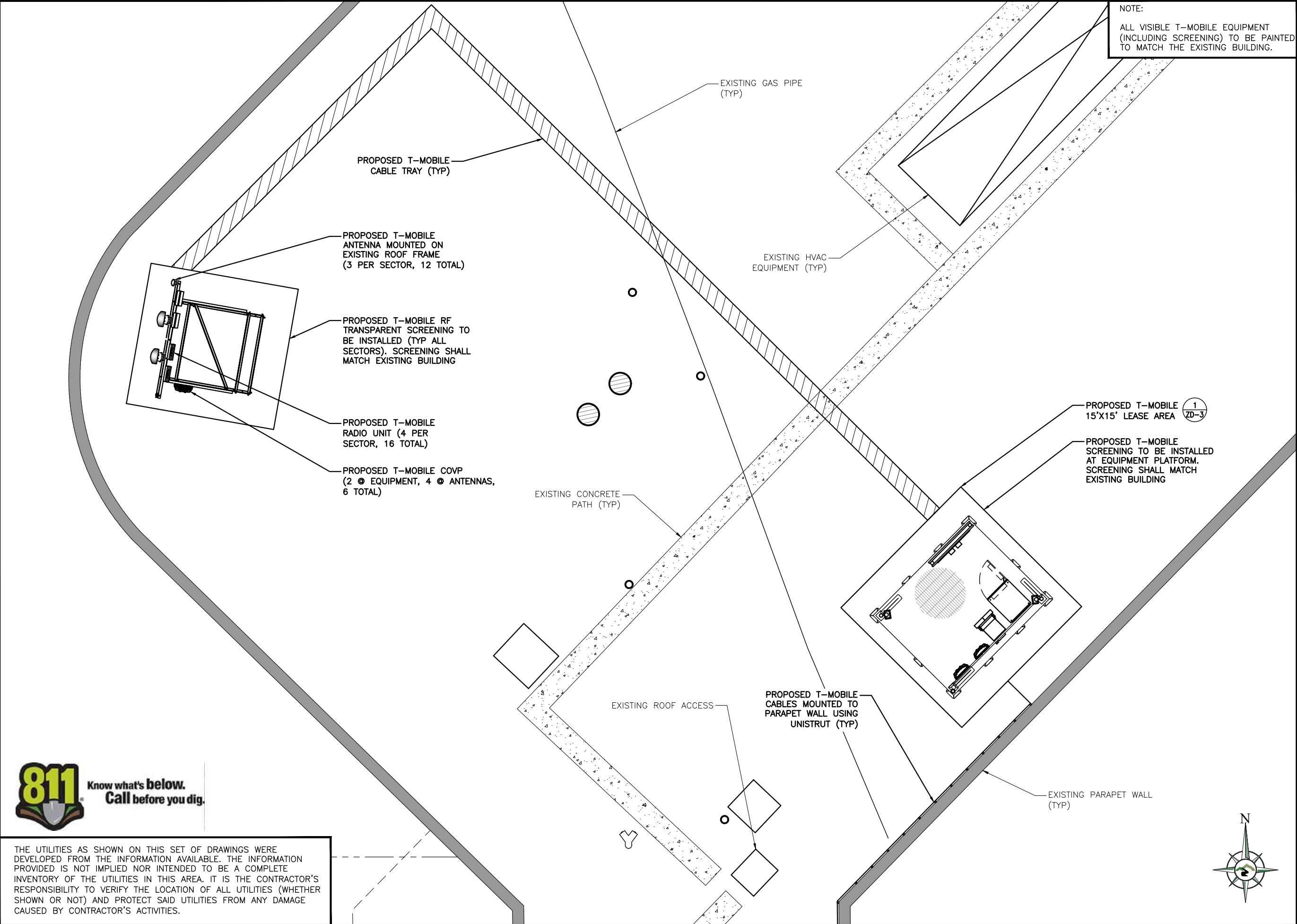
1550 S. POTOMAC STREET
AURORA, CO 80012

SHEET TITLE:

OVERALL
SITE PLAN

SHEET NUMBER:

ZD-1



NOTE:
ALL VISIBLE T-MOBILE EQUIPMENT
(INCLUDING SCREENING) TO BE PAINTED
TO MATCH THE EXISTING BUILDING.



THE UTILITIES AS SHOWN ON THIS SET OF DRAWINGS WERE DEVELOPED FROM THE INFORMATION AVAILABLE. THE INFORMATION PROVIDED IS NOT IMPLIED NOR INTENDED TO BE A COMPLETE INVENTORY OF THE UTILITIES IN THIS AREA. IT IS THE CONTRACTOR'S RESPONSIBILITY TO VERIFY THE LOCATION OF ALL UTILITIES (WHETHER SHOWN OR NOT) AND PROTECT SAID UTILITIES FROM ANY DAMAGE CAUSED BY CONTRACTOR'S ACTIVITIES.

PROPOSED ENLARGED SITE PLAN

4'

0

2'

4'

SCALE: 1/4" = 1'-0" (24x36)
(OR) 1/8" = 1'-0" (11x17)



T-MOBILE WEST, LLC
18400 E. 22ND AVENUE
AURORA, CO 80011



POWDER RIVER
Engineering Services, LLC
www.powderriverdev.com

LICENSE #: N/A

REVISIONS			
REV	DATE	DESCRIPTION	INT
A	09/18/17	ISSUED FOR REVIEW 90%	BCM

PRELIMINARY
NOT FOR
CONSTRUCTION

THESE PLANS AND SPECIFICATIONS, AS INSTRUMENTS OF SERVICE, ARE AND SHALL REMAIN THE PROPERTY OF POWDER RIVER DEVELOPMENT SERVICES, LLC WHETHER THE PROJECTS FOR WHICH THEY ARE MADE ARE EXECUTED OR NOT. THESE DRAWINGS AND SPECIFICATIONS SHALL NOT BE USED BY ANY PERSON OR ENTITY ON OTHER PROJECTS WITHOUT PRIOR WRITTEN CONSENT OF THE ENGINEER.

SITE INFORMATION

DN01644A

LILLIBRIDGE

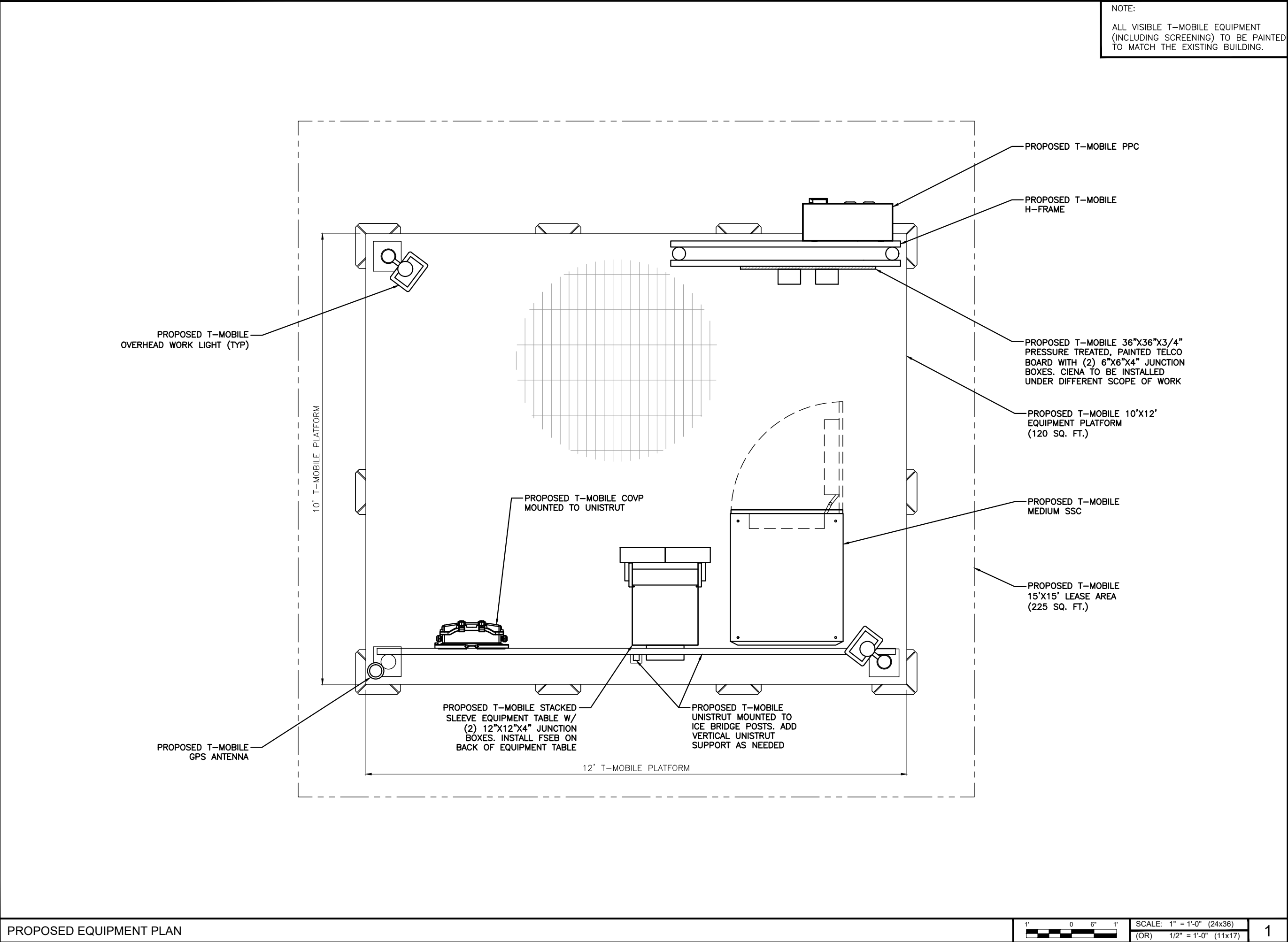
1550 S. POTOMAC STREET
AURORA, CO 80012

SHEET TITLE:

ENLARGED
SITE PLAN

SHEET NUMBER:

ZD-2



T-MOBILE WEST, LLC
18400 E. 22ND AVENUE
AURORA, CO 80011

POWDER RIVER
Engineering Services, LLC
www.powderriverdev.com

LICENSE #: N/A

REVISIONS			
REV	DATE	DESCRIPTION	INT
A	09/18/17	ISSUED FOR REVIEW 90%	BCM

PRELIMINARY
NOT FOR
CONSTRUCTION

THESE PLANS AND SPECIFICATIONS, AS INSTRUMENTS OF SERVICE, ARE AND SHALL REMAIN THE PROPERTY OF POWDER RIVER DEVELOPMENT SERVICES, LLC WHETHER THE PROJECTS FOR WHICH THEY ARE MADE ARE EXECUTED OR NOT. THESE DRAWINGS AND SPECIFICATIONS SHALL NOT BE USED BY ANY PERSON OR ENTITY ON OTHER PROJECTS WITHOUT PRIOR WRITTEN CONSENT OF THE ENGINEER.

SITE INFORMATION

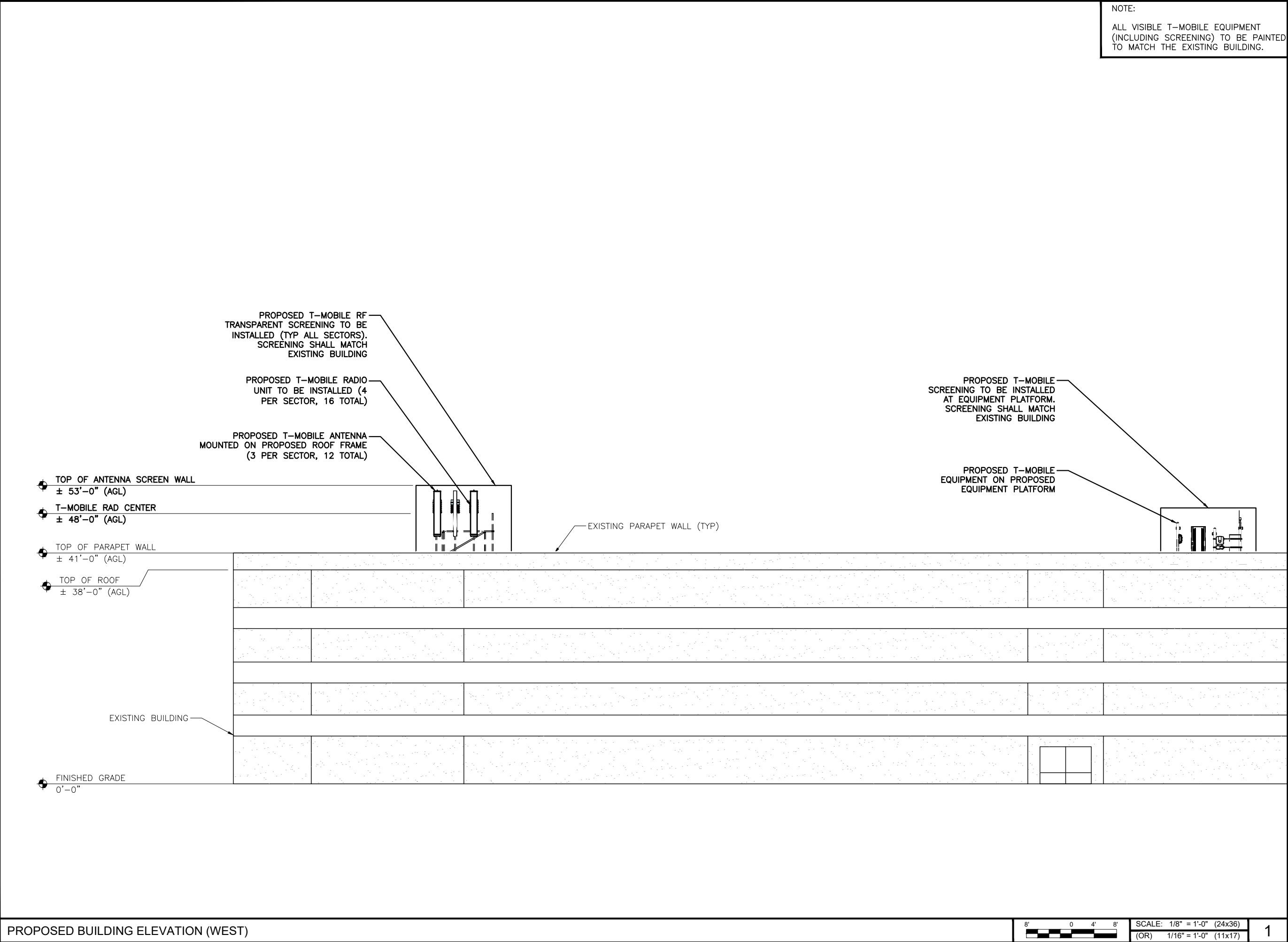
DN01644A


LILLIBRIDGE

**1550 S. POTOMAC STREET
AURORA, CO 80012**


SHEET TITLE:
EQUIPMENT PLAN

SHEET NUMBER:
ZD-3





T-MOBILE WEST, LLC
18400 E. 22ND AVENUE
AURORA, CO 80011



POWDER RIVER
Engineering Services, LLC
www.powderriverdev.com

LICENSE #: N/A

REVISIONS			
REV	DATE	DESCRIPTION	INT
A	09/18/17	ISSUED FOR REVIEW 90%	BCM

PRELIMINARY
NOT FOR
CONSTRUCTION

THESE PLANS AND SPECIFICATIONS, AS INSTRUMENTS OF SERVICE, ARE AND SHALL REMAIN THE PROPERTY OF POWDER RIVER DEVELOPMENT SERVICES, LLC WHETHER THE PROJECTS FOR WHICH THEY ARE MADE ARE EXECUTED OR NOT. THESE DRAWINGS AND SPECIFICATIONS SHALL NOT BE USED BY ANY PERSON OR ENTITY ON OTHER PROJECTS WITHOUT PRIOR WRITTEN CONSENT OF THE ENGINEER.

SITE INFORMATION

DN01644A


LILLIBRIDGE

**1550 S. POTOMAC STREET
AURORA, CO 80012**

SHEET TITLE:
**BUILDING
ELEVATION**

SHEET NUMBER:
ZD-4

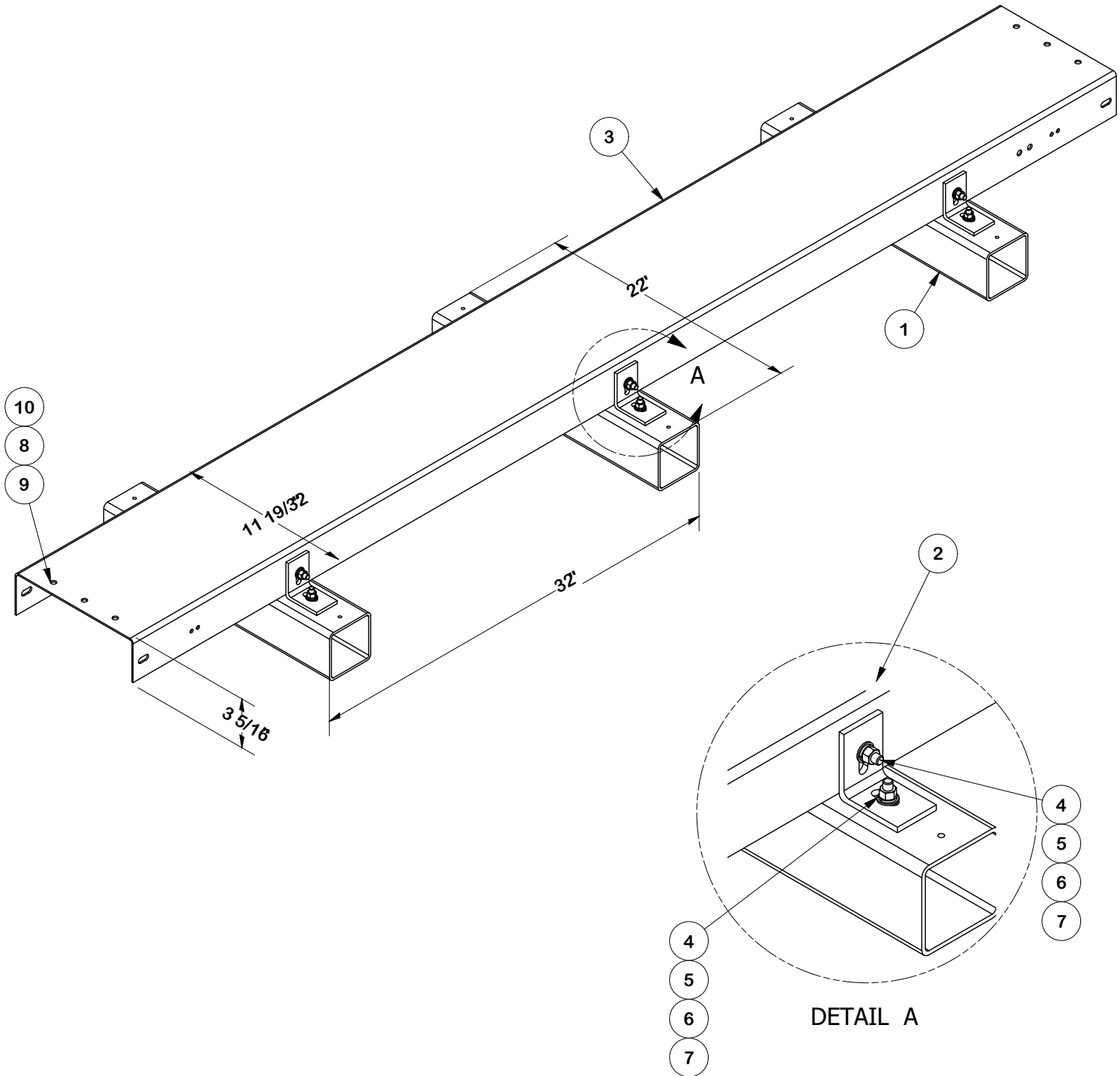
8'04'8'



SCALE: 1/8" = 1'-0" (24x36)
(OR) 1/16" = 1'-0" (11x17)

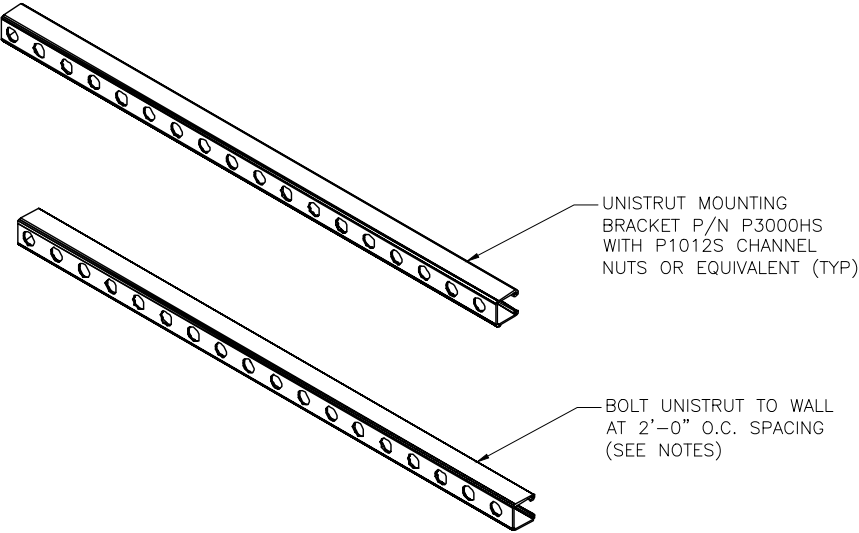
1

PARTS LIST						
ITEM	QTY	PART NO.	PART DESCRIPTION	LENGTH	UNIT WT.	NET WT.
1	3	SLPR4	PVC ROOFTOP SLEEPER	22 in	2.10	6.29
2	6	RCCLIP	ROOFTOP COVER CLIP ANGLE		0.36	2.14
3	1	X-SP1542	4 RUN ROOFTOP COVER		47.77	47.77
4	12	G38114	3/8" x 1-1/4" HDG HEX BOLT GR5		0.06	0.75
5	18	G38FW	3/8" HDG USS FLATWASHER		0.01	0.21
6	12	G38LW	3/8" HDG LOCKWASHER		0.01	0.08
7	12	G38NUT	3/8" HDG HEAVY 2H HEX NUT		0.03	0.41
8	3	RN38	RETAINING NUT 3/8" X 1-1/4"		0.04	0.12
9	3	SS38114	SS 3/8" X 1-1/4" BOLT	1 1/4 in	0.06	0.18
10	3	SS38FW	3/8" STAINLESS FLATWASHER		0.01	0.03
TOTAL WT. #						57.98



CABLE TRAY DETAIL

SCALE:
NTS 2



- NOTES:
- CONCRETE
ANCHOR: HILTI HIT HY 150 ADHESIVE ANCHOR
SIZE: $\phi = 3/8"$
EMBEDMENT: 1 3/4"
SPACING: S = 24" (MAX)
* IF THE WALL THICKNESS IS LESS THAN 2", THE 1/2" ϕ A325 BOLT SHALL BE USED TO GO THROUGH THE WALL WITH A 3/8" BACK PLATE INSIDE OF THE WALL.
 - FULLY-GROUTED CMU WALL
ANCHOR: HILTI HIT HY 150 ADHESIVE ANCHOR
SIZE: $\phi = 3/8"$
EMBEDMENT: 1 3/4"
SPACING: ONE (1) ANCHOR PER CELL (MAX) AND 8" (MIN)
 - SOLID BRICK WALL
ANCHOR: HILTI HIT HY 20 ADHESIVE ANCHOR
SIZE: $\phi = 3/8"$
EMBEDMENT: 2"
SPACING: S = 24" (MAX)
 - HOLLOW, UNGROUTED CMU WALL & BRICK WALL WITH HOLES
ANCHOR: HILTI HIT HY 20 ADHESIVE ANCHOR
SIZE: $\phi = 3/8"$
EMBEDMENT: THROUGH FACE OF HOLLOW BASE $\geq 6"$ (MIN)
SPACING: S = (2) COMPLETE BRICKS IN ANY DIRECTION
(1) ANCHOR PER BLOCK CELL (CMU)
 - STEEL
BOLT: A325
BOLT SIZE: $\phi = 1/2"$
BOLT HOLE SIZE: $\phi = 9/16"$
 - IF THE WALL MATERIAL IS DIFFERENT FROM ABOVE, CONTRACTOR SHALL INFORM DESIGN ENGINEER IMMEDIATELY.
 - ALL HARDWARE AND PARTS SHALL BE HOT-DIPPED GALVANIZED WITH LOCK WASHERS AND HEAVY HEX NUTS.
 - ALL BOLT HOLES SHALL BE 7/16" ϕ UNLESS NOTED OTHERWISE.
 - THE MAX LOAD BETWEEN ANCHORS SHALL BE LESS THAN 400 POUNDS.

TYPICAL UNISTRUT WALL MOUNTING DETAIL

SCALE:
NTS 1

T-Mobile

T-MOBILE WEST, LLC
18400 E. 22ND AVENUE
AURORA, CO 80011



POWDER RIVER
Engineering Services, LLC
www.powderriverdev.com

LICENSE #: N/A

REVISIONS			
REV	DATE	DESCRIPTION	INT
A	09/18/17	ISSUED FOR REVIEW 90%	BCM

PRELIMINARY
NOT FOR
CONSTRUCTION

THESE PLANS AND SPECIFICATIONS, AS INSTRUMENTS OF SERVICE, ARE AND SHALL REMAIN THE PROPERTY OF POWDER RIVER DEVELOPMENT SERVICES, LLC WHETHER THE PROJECTS FOR WHICH THEY ARE MADE ARE EXECUTED OR NOT. THESE DRAWINGS AND SPECIFICATIONS SHALL NOT BE USED BY ANY PERSON OR ENTITY ON OTHER PROJECTS WITHOUT PRIOR WRITTEN CONSENT OF THE ENGINEER.

SITE INFORMATION

DN01644A

LILLIBRIDGE

1550 S. POTOMAC STREET
AURORA, CO 80012

SHEET TITLE:
CONSTRUCTION
DETAILS

SHEET NUMBER:

ZD-5