

Exhibit A

Page 1 of 2

Easement Description

A portion of Lot 1, Block 1, TOWER CENTER FOR INDUSTRY SUBDIVISION FILING NO. 3 recorded August 25, 1981 at Reception Number 1981020340114 of the Adams County records, located in the northeast quarter of Section 33, Township 3 South, Range 66 West of the Sixth Principal Meridian, City of Aurora, Adams County, Colorado, described as follows:

Note: The Basis of Bearings is the north line of the northeast quarter of Section 33, T3S, R66W 6th P.M. as monumented with an aluminum cap PLS 25933 at the west end and an brass cap PLS 16419 at the east end and is assumed to bear N 89°41'11" E.

Commencing at the north quarter corner of said Section 33, an aluminum cap PLS 25933; Thence S 82°57'50" E a distance of 1723.73 feet to the north line of said Lot 1 and the POINT OF BEGINNING;
Thence S 83°27'59" E, along said north line, a distance of 23.00 feet;
Thence departing said north line S 06°30'48" W a distance of 40.53 feet;
Thence along a curve to the left a distance of 27.20 feet, said curve having a radius of 30.00 feet, a delta angle of 51°57'28" and a chord distance of 26.28 feet which bears S 19°27'56" E;
Thence S 45°26'40" E a distance of 121.71 feet;
Thence along a curve to the left a distance of 23.66 feet, said curve having a radius of 30.00 feet, a delta angle of 45°11'15" and a chord distance of 23.05 feet which bears S 68°02'18" E;
Thence N 89°22'05" E a distance of 198.57 feet;
Thence S 00°37'55" E a distance of 235.29 feet;
Thence N 89°46'55" W a distance of 23.00 feet;
Thence N 00°37'55" W a distance of 211.95 feet;
Thence S 89°22'05" W a distance of 756.19 feet to an easterly parcel line of that easement described in instrument recorded February 8, 1982 at Reception Number 1982020363901 of the Adams County records;
Thence N 00°37'55" W, along said easterly parcel line and easterly parcel line extended northerly, a distance of 23.00 feet;
Thence departing said easterly line N 89°22'05" E a distance of 504.28 feet (Passing Reference Point "A" at 326.31 feet);
Thence along a curve to the left a distance of 6.33 feet, said curve having a radius of 5.00 feet, a delta angle of 72°31'08" and a chord distance of 5.91 feet which bears N 53°06'30" E;
Thence N 16°50'56" E a distance of 2.11 feet;
Thence along a curve to the left a distance of 15.80 feet, said curve having a radius of 20.50 feet, a delta angle of 44°09'23" and a chord distance of 15.41 feet which bears N 05°13'45" W;
Thence N 27°18'27" W a distance of 14.89 feet;
Thence N 45°26'40" W a distance of 38.01 feet;
Thence along a curve to the left a distance of 47.22 feet, said curve having a radius of 30.00 feet, a delta angle of 90°11'15" and a chord distance of 42.50 feet which bears S 89°27'42" W;
Thence S 44°22'05" W a distance of 54.28 feet;
Thence S 00°37'55" E a distance of 22.83 feet;
Thence S 89°22'05" W a distance of 67.79 feet to the herein called Reference Point "A" and point of non-tangent curvature;
Thence along a curve to the left a distance of 23.56 feet, said curve having a radius of 30.00 feet, a delta angle of 45°00'00" and a chord distance of 22.96 feet which bears N 66°52'05" E;
Thence N 44°22'05" E a distance of 119.74 feet;
Thence along a curve to the left a distance of 19.82 feet, said curve having a radius of 30.00 feet, a delta angle of 37°51'17" and a chord distance of 19.46 feet which bears N 25°26'26" E;
Thence N 06°30'48" E a distance of 52.64 feet to the north line of said Lot 1 and the POINT OF BEGINNING.

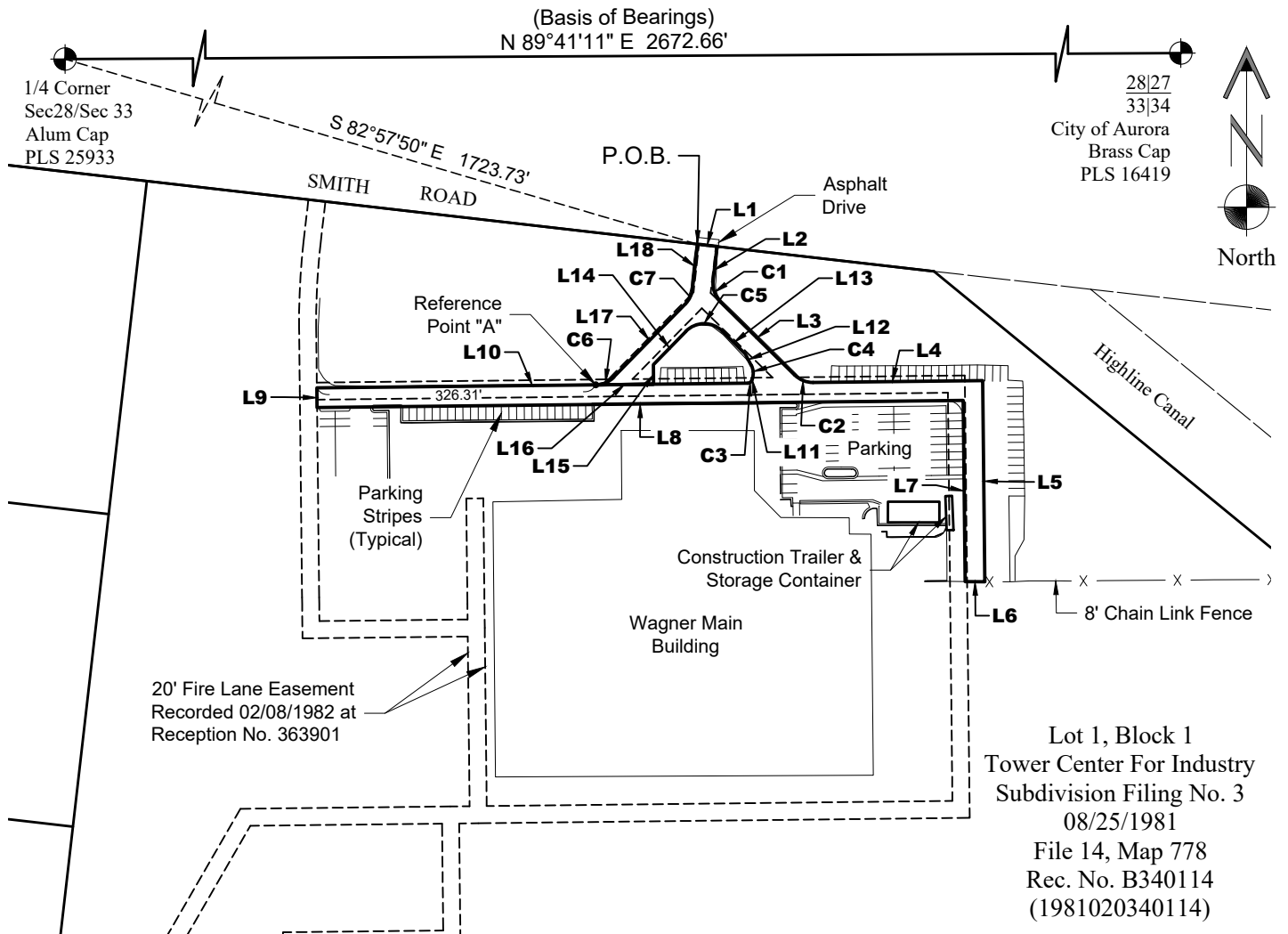
Containing 0.720 acres more or less.

Prepared by Kyle R. Walker
For and on behalf of Topographic Co.
520 Stacy Ct. Ste B, Lafayette, CO 80026



Exhibit A


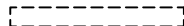
Page 2 of 2



LINE	BEARING	DISTANCE
L1	S 83°27'59" E	23.00'
L2	S 06°30'48" W	40.53'
L3	S 45°26'40" E	121.71'
L4	N 89°22'05" E	198.57'
L5	S 00°37'55" E	235.29'
L6	N 89°46'55" W	23.00'
L7	N 00°37'55" W	211.95'
L8	S 89°22'05" W	756.19'
L9	N 00°37'55" W	23.00'
L10	N 89°22'05" E	504.28'
L11	N 16°50'56" E	2.11'
L12	N 27°18'27" W	14.89'
L13	N 45°26'40" W	38.01'
L14	S 44°22'05" W	54.28'
L15	S 00°37'55" E	22.83'
L16	S 89°22'05" W	67.79'
L17	N 44°22'05" E	119.74'
L18	N 06°30'48" E	52.64'

CURVE	ARC LENGTH	RADIUS	DELTA ANGLE	CHORD LENGTH	CHORD BEARING
C1	27.20'	30.00'	51°57'28"	26.28'	S 19°27'56" E
C2	23.66'	30.00'	45°11'15"	23.05'	S 68°02'18" E
C3	6.33'	5.00'	72°31'08"	5.91'	N 53°06'30" E
C4	15.80'	20.50'	44°09'23"	15.41'	N 05°13'45" W
C5	47.22'	30.00'	90°11'15"	42.50'	S 89°27'42" W
C6	23.56'	30.00'	45°00'00"	22.96'	N 66°52'05" E
C7	19.82'	30.00'	37°51'17"	19.46'	N 25°26'26" E

Legend

-  Proposed Easement
-  Existing Easement
(Portions To Be Vacated;
See Exhibit B)

